

Suir Road & Davitt Road Junction Update

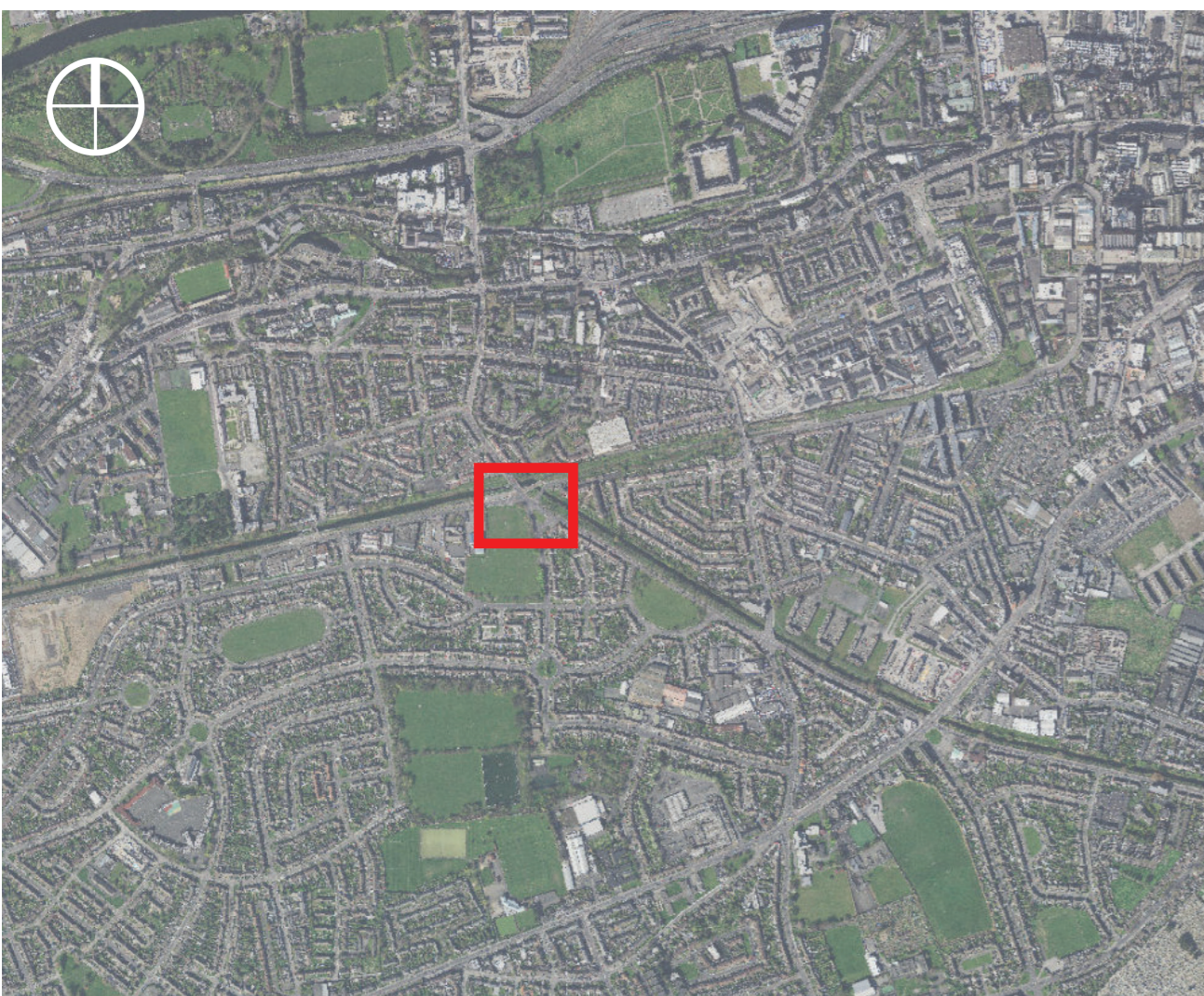


Artist's Impression of the Proposed Scheme Looking Across Dolphin Road from Grand Canal View

Project Overview

Dublin City Council (DCC), with the support of the National Transport Authority, propose to upgrade the junction of Suir Road, Davitt Road, Dolphin Road and Slievenamon Road where they intersect at the Grand Canal. The LUAS Red Line also runs through the junction. The proposal introduces measures to cater for all transport users passing through the junction, improving the layout and facilitating bus and cyclist movements.

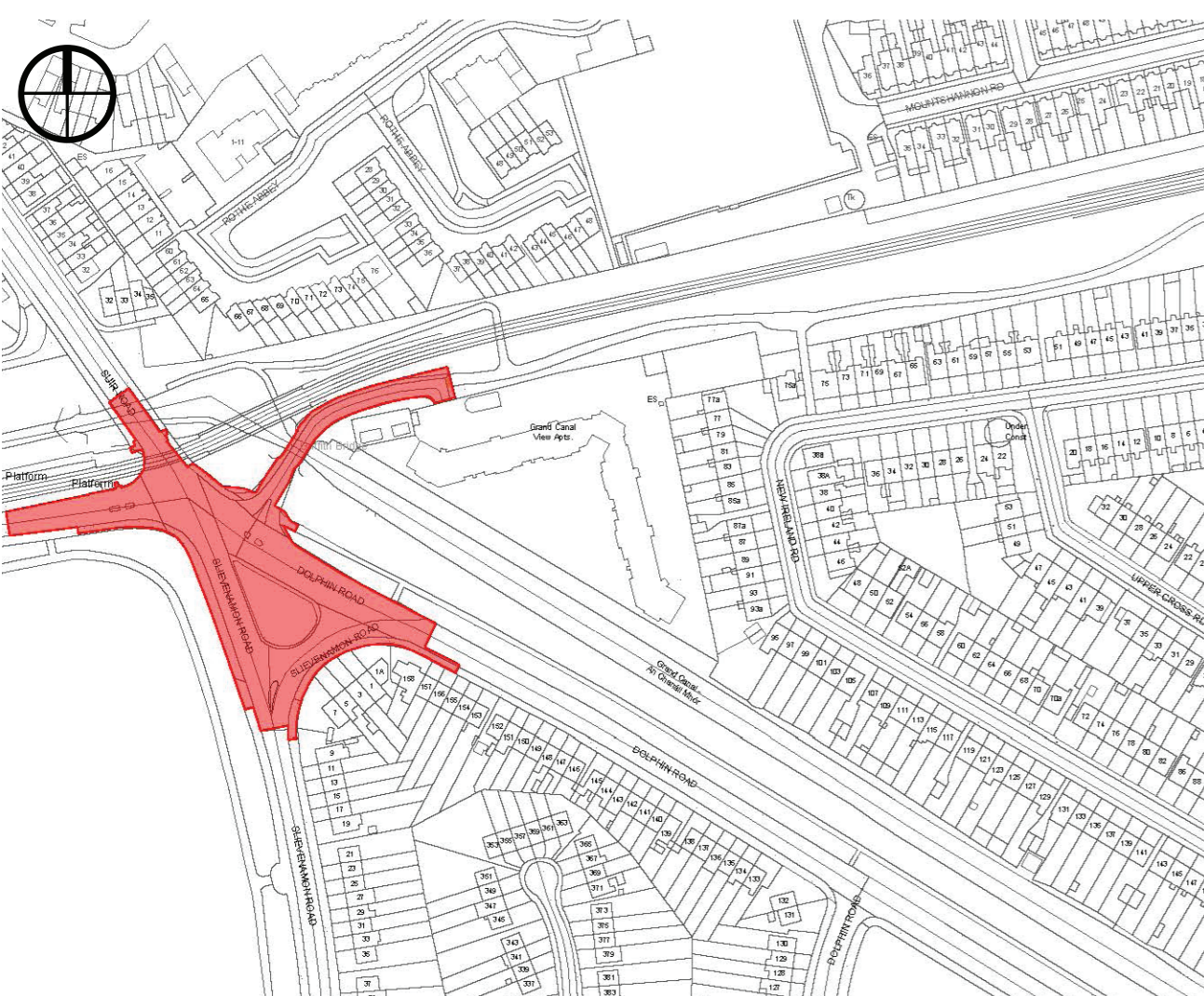
The project is a section of the Kilmainham to Thomas Street Active Travel Project which is part of the DCC core Active Travel Network. It will provide 2.6km of high quality walking and cycling facilities from Kilmainham Gaol to Thomas Street. It will extend from the South Circular Road/Kilmainham Lane junction along South Circular Road, Suir Road, Grand Canal View, St James Linear Park, James Walk, Forbes Lane, Marrowbone Lane and Thomas Court to the junction with Thomas Street.



Site Context Plan - Satellite Image



Artists Impression of the Proposed Scheme - Aerial View Looking North



Site Boundary | Scale: 1:2,500

Landscape Intervention






The landscape proposals include the addition of bio retention swales located adjacent to Dolphin Road and small areas of planting that hosts a wide variety of pollinator friendly planting.

The two swales are divided by a path which provides great seating opportunities for people to enjoy the space. The paths add to the permeability of the space and provides an alternative and quieter route. There will be trees planted within the swales along with various planting mixes in order to provide seasonal interest.

The areas of planting along the road will contain pollinator friendly planting that contributes to the biodiversity. Certain species of plants have been carefully selected to provide form and colour all year round.

Contact Us

We are seeking public engagement on the current scheme proposals. If you would like to view additional information or make a submission to DCC on this project, please see the options below.

-  Active Travel Programme Office, Dublin City Council, Cavendish House, Block D, Arran Court, Arran Quay, Dublin 7, D07 H5CH
-  activetraveloffice@dublincity.ie with subject: *Suir Road Davitt Road Junction Upgrade*
-  Active Travel Programme Office: 01 222 2536
-  consultation.dublincity.ie
-  DCC Alerts: alerts.dublincity.ie



Scan Me

Dublin City Active Travel Network

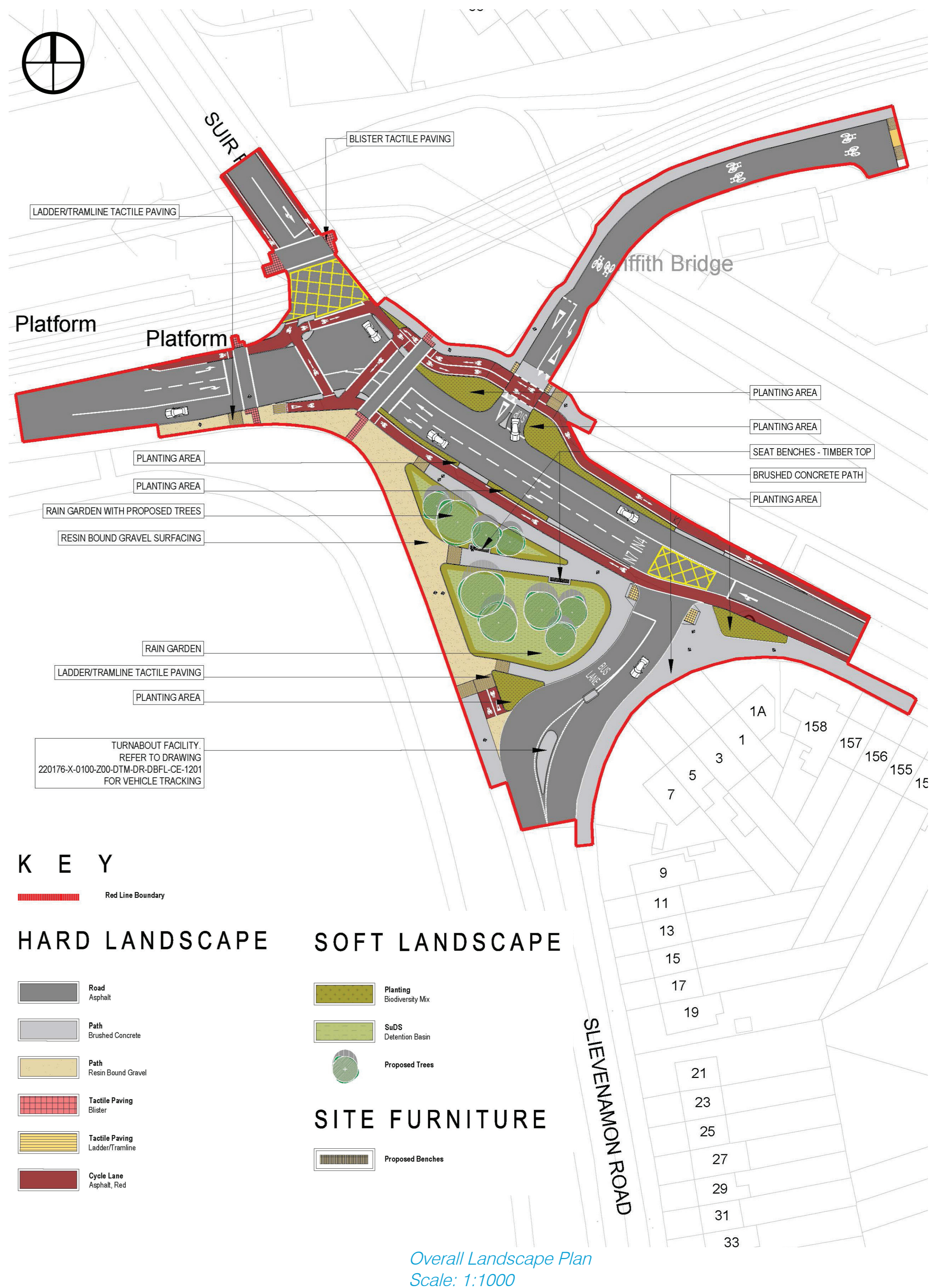
Kilmainham to Thomas Street Walking and Cycling Route

Suir Road & Davitt Road Junction Update



Artist's Impression of the Proposed Scheme Looking Towards the Bus Gate on Slievenamon Road from Dolphin Road

Soft Landscape Materials Palette



Hard Landscape Materials Palette

