

School Community & Neighbourhood Leaflet

School Zones St Christopher's Primary School, Haddington Road/Haddington Place, Dublin 4

November 2023

Dublin City Council, with the support of the National Transport Authority, proposes to implement School Zone front-of-school works to improve the safety of students and vulnerable road users accessing and exiting the school at St. Christopher's Primary School, Haddington Road, Dublin 4.

What are School Zones?



Image 1: Example of School Zone at Star of the Sea School, Sandymount, Dublin 4

School Zones are built infrastructural upgrades that are designed to give priority to students at the school gate by freeing up footpaths and reducing vehicle drop-offs, pick-ups and idling. The aim is to increase safety at the front of schools and to prioritise active travel (walking, cycling, wheeling and scooting) to and from school.

School Zones are implemented around the world in order to:

- Increase student safety
- Reduce vehicle drop-offs, pick-ups and idling outside the school gate
- Reduce congestion and prioritise active travel (walking, cycling, wheeling and scooting) to and from school
- Encourage slow, safe driving in the area of the school
- Promote considerate parking
- Reduce emissions and pollution, and improve air quality and noise quality by reducing the volume of traffic at schools and vehicles with engines idling

School Community & Neighbourhood Leaflet

School Zones St Christopher's Primary School, Haddington Road/Haddington Place, Dublin 4

Where will these works take place?

These works will take place on Haddington Place, Dublin 4, just off Haddington Road outside of St. Christopher's Primary School.

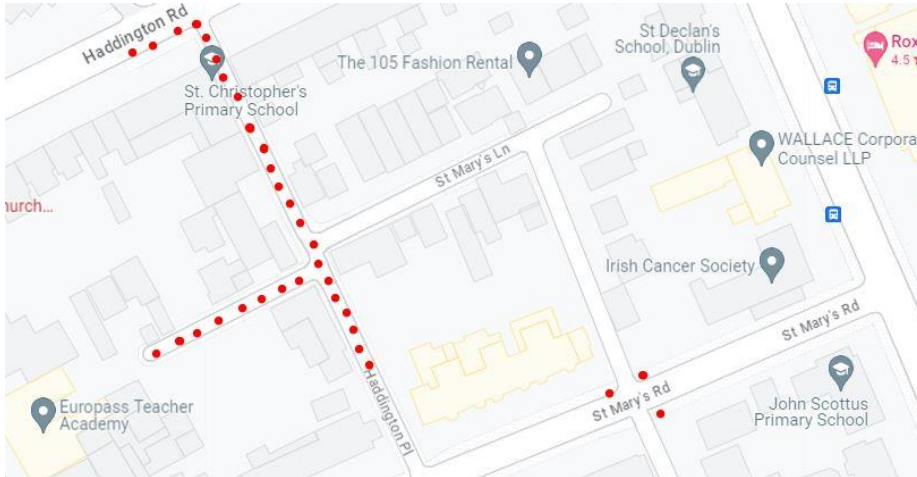


Image 2: Extent of the works at St. Christopher's Primary School, Haddington Road/Haddington Place, Dublin 4

What works will take place at St. Christopher's Primary School?

The works will consist of:



Green and blue pencil bollards outside the school entrance on Haddington Road from the warden box to the disabled parking bay as well as along the length of the school building on Haddington Place. They will also be installed on the corners of St. Mary's Lane at its junction with Haddington Place. These are depicted as green and blue dots on the design drawing.

Yellow pencil bollards in the existing carriageway on Haddington Place. These bollards are depicted as pink dots on the design drawings.

Image 3: Example pencil bollard on footpath, Cromcastle, Kilmore, Dublin 5

School Community & Neighbourhood Leaflet

School Zones St Christopher's Primary School, Haddington Road/Haddington Place, Dublin 4

Colourful road markings consisting of yellow and red circles painted directly on the road outside the school on Haddington Place and continuing around the corner into the cul-de-sac on Haddington Place.



Image 4: Example circle road surface markings, Thornville Rd, Kilbarrack, Dublin 5



Image 5: Example road surface sign for School Zone, Leinster Road, Rathmines, Dublin 6

A 'School Zone' road surface sign will be painted at the entrance to Haddington Place from its junction with Haddington Road.

Guardrails outside the school on Haddington Place to be removed.

Haddington Place will become one-way from north to south (Haddington Road to St. Mary's Road). To facilitate this the following signage will be erected:

Right turn ban will be implemented

- on St. Mary's Road on approach to Haddington Place
- on St. Mary's Road on approach to St. Mary's Lane
- on St. Mary's Lane on approach to Haddington Place



School Community & Neighbourhood Leaflet

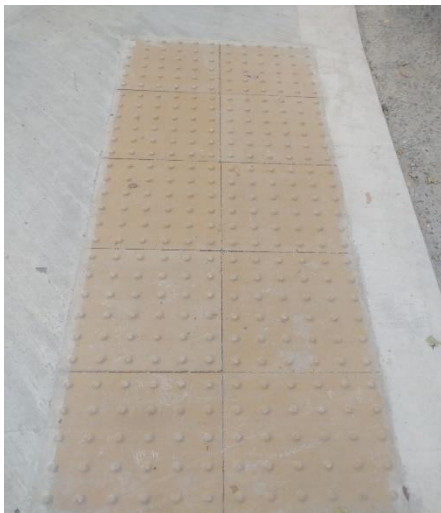
School Zones St Christopher's Primary School, Haddington Road/Haddington Place, Dublin 4



Left turn bans will be implemented

- a) on Haddington Place Minor on approach to Haddington Place Major
- b) on St. Mary's Road on approach to St. Mary's Lane
- c) On St. Mary's Road to Haddington Place Major

A **No Entry sign** and **No Entry road markings** to be placed on Haddington Place at its junction with St. Mary's Road and also on St Mary's Lane at its junction with St. Mary's Road.



Buff colour blister tactile pavement inserts to be positioned at the corners of Haddington Place Major cul-de-sac at its junction with Haddington Place Minor. The **tactile paving** prevents trips and slips. The paving is more user-friendly for people with mobility and visual impairment needs. They are depicted as brown hatching on the path in the design drawing.

Image 6: Example tactile blister pavements

Dished kerb to be installed at School Warden crossing point on Haddington Road.

The conversion of the Pay and Display parking bay on Haddington Place at its junction with Haddington Road to a **disabled parking bay**.

The removal of 20 metres of Pay and Display parking on the western side of Haddington Place with flexible pencil bollards in its place.

School Community & Neighbourhood Leaflet

School Zones St Christopher's Primary School, Haddington Road/Haddington Place, Dublin 4

Why are we implementing this School Zone?

Traffic-related safety concerns have been reported and observed by the schools, parents, neighbours, Dublin City Council's School Warden Service, Parking Enforcement and School Mobility Officer, including:

- Excessive congestion around the school entrances
- Drivers using excessive speed on Haddington Place
- Drivers blocking Haddington Place Major and using St. Mary's Lane and Haddington Place Minor for dangerous manoeuvres and reversing, which is high-risk behaviour around children
- Close proximity of children to traffic due to narrow footpaths particularly on Haddington Place

Share your thoughts from 23 November 2023 to 6 December 2023

If you would like to share comments or thoughts on these works please contact us via:

- **Online survey:** <https://consultation.dublincity.ie/> (search St Christopher's) has all of the details listed here as well as a portal through which to give feedback
- **Email:** sustainablemobility@dublincity.ie (with St. Christopher's Primary School in the subject bar)
- **Phone:** Customer Services Desk 222 2222 they will refer you to an available member of the School Mobility team
- **Postal Address:** School Mobility Programme, City Centre Transports Projects, Block 2, Floor 7, Civic Offices, Wood Quay, Dublin 8, Ireland, D08 RF3F

This period of non-statutory consultation closes at midnight on 6 December 2023.

What happens next?

After the public consultation we will review all the comments and observations and, where appropriate, make required changes to the design. Works will then be scheduled for installation.

For the School Zone front-of-school treatment to work effectively, parents who need to drive must be willing to change their drop off and pick up habits. **Parents and guardians will be encouraged not to collect and drop off within the school zone.** They must park respectfully and legally outside of the school zone by not blocking other entrances, mounting footpaths or double parking.

Full drawings and School Zone guidance documents are available online at <https://consultation.dublincity.ie/> (search St. Christopher's Primary School).

A hard copy poster of the drawing will be on view at the school gates.

School Community & Neighbourhood Leaflet

School Zones St Christopher's Primary School, Haddington Road/Haddington Place, Dublin 4

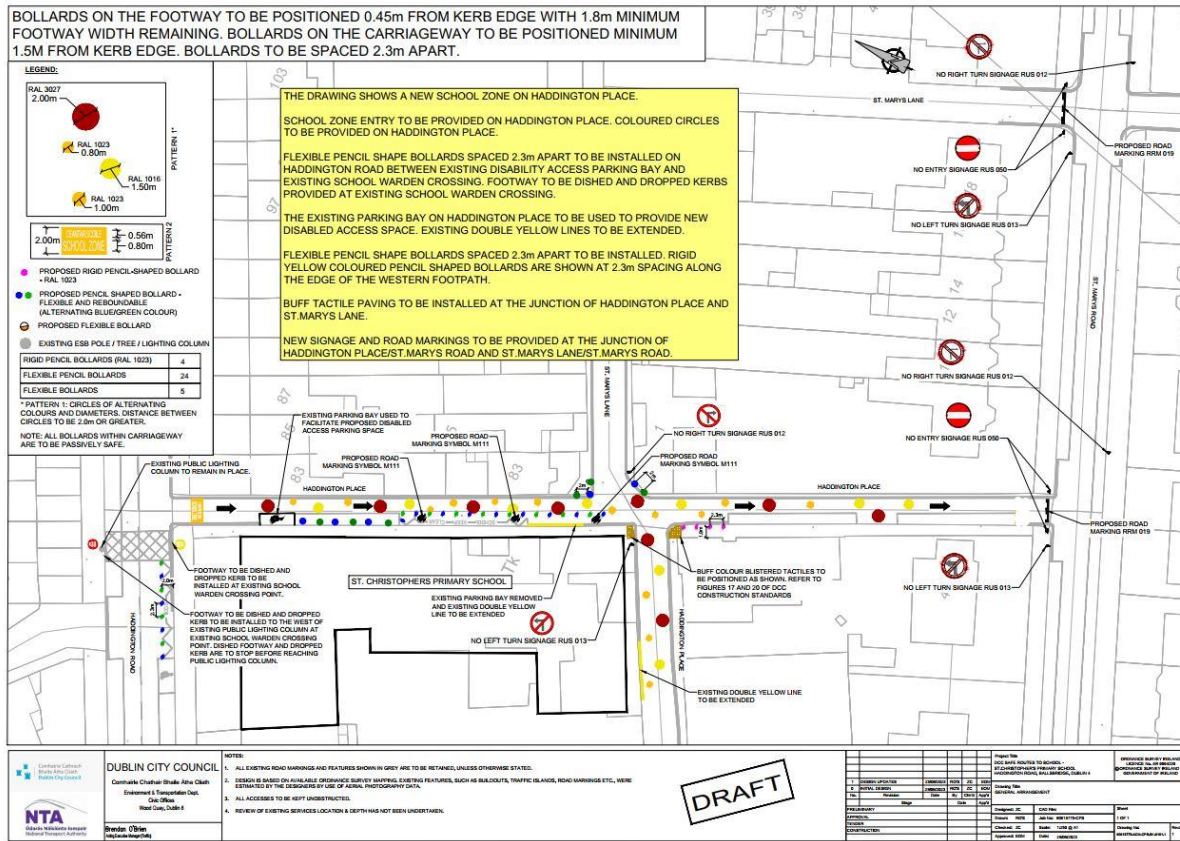


Image 7: Snippet of design drawings for St. Christopher's Primary School