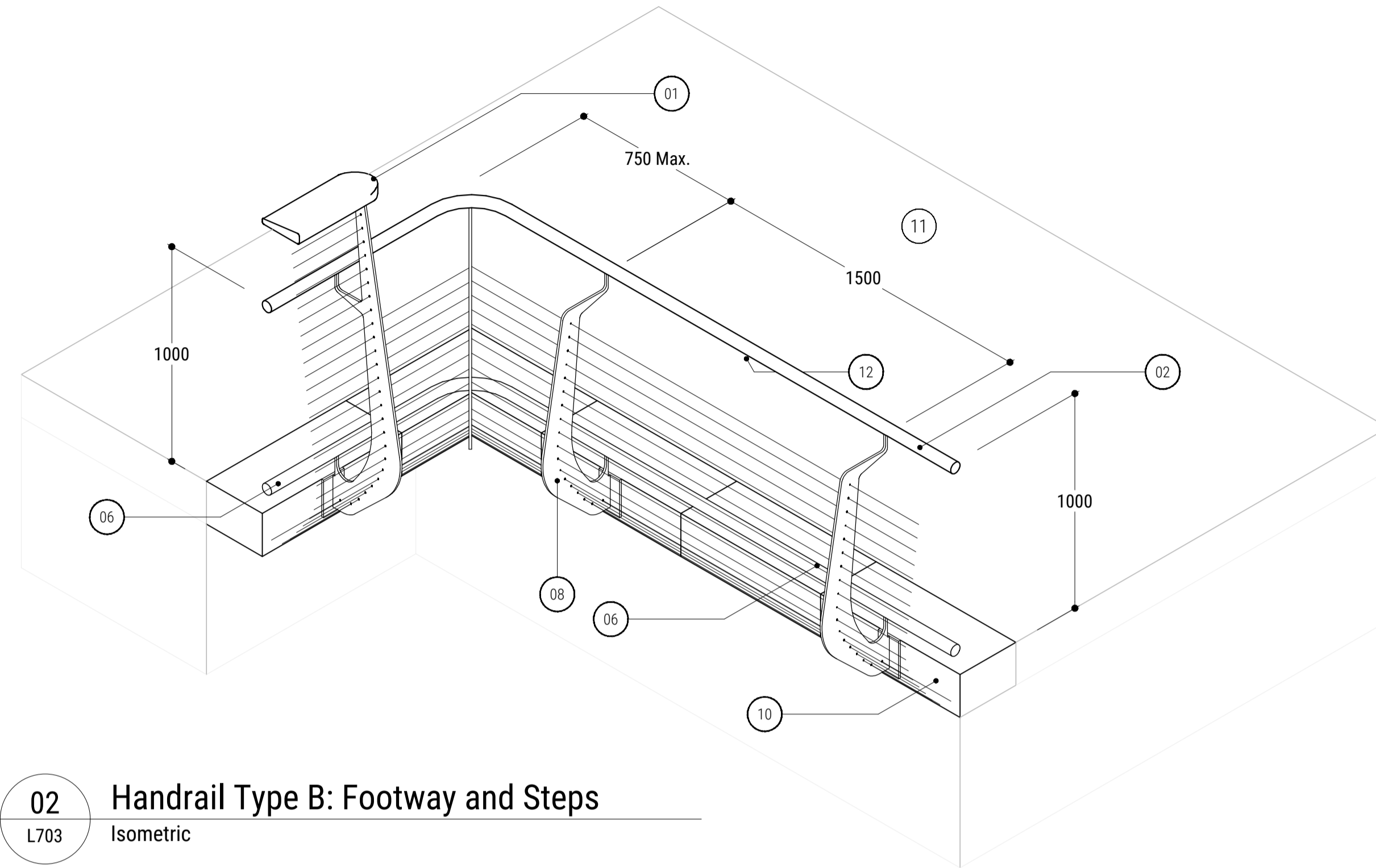
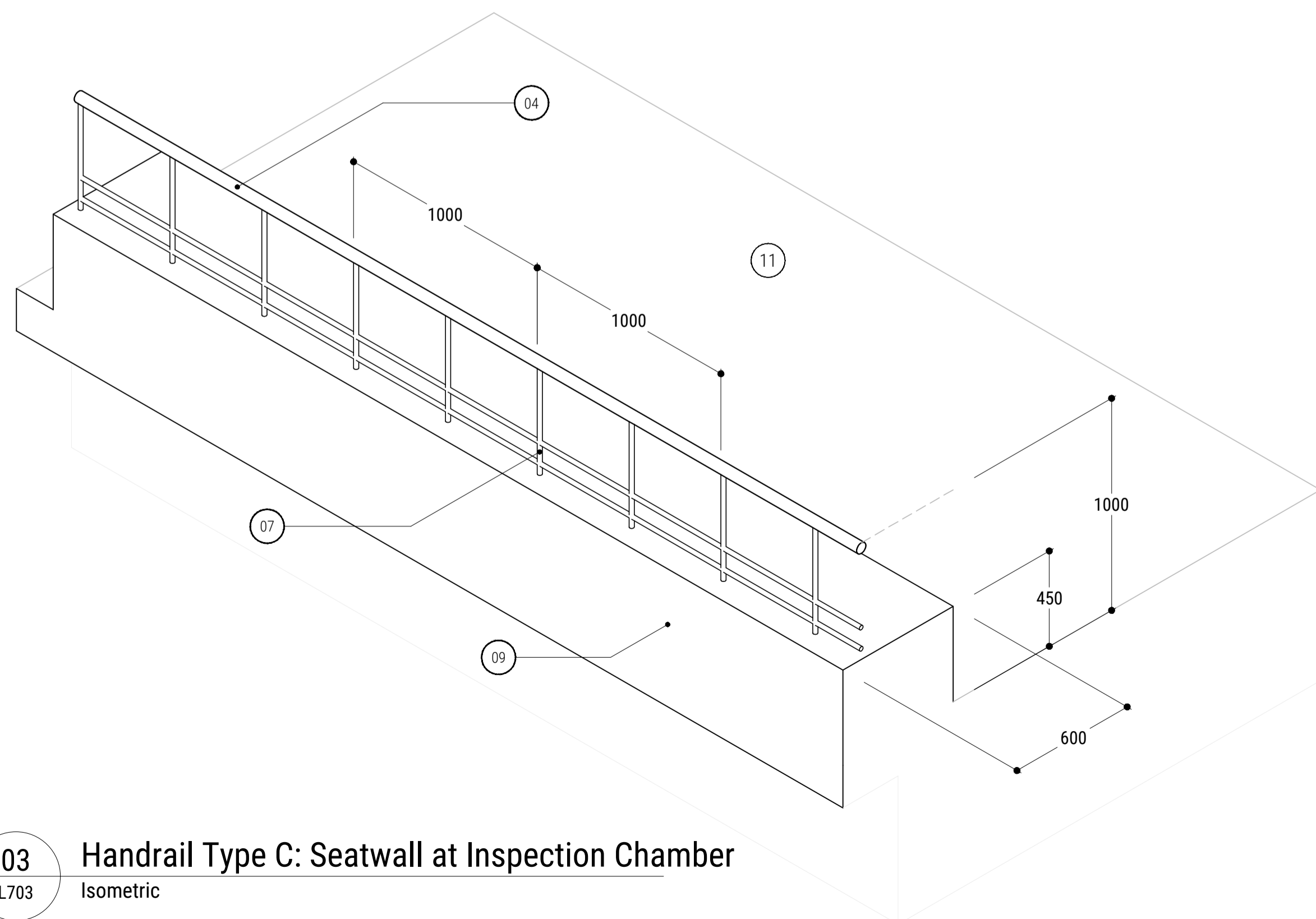


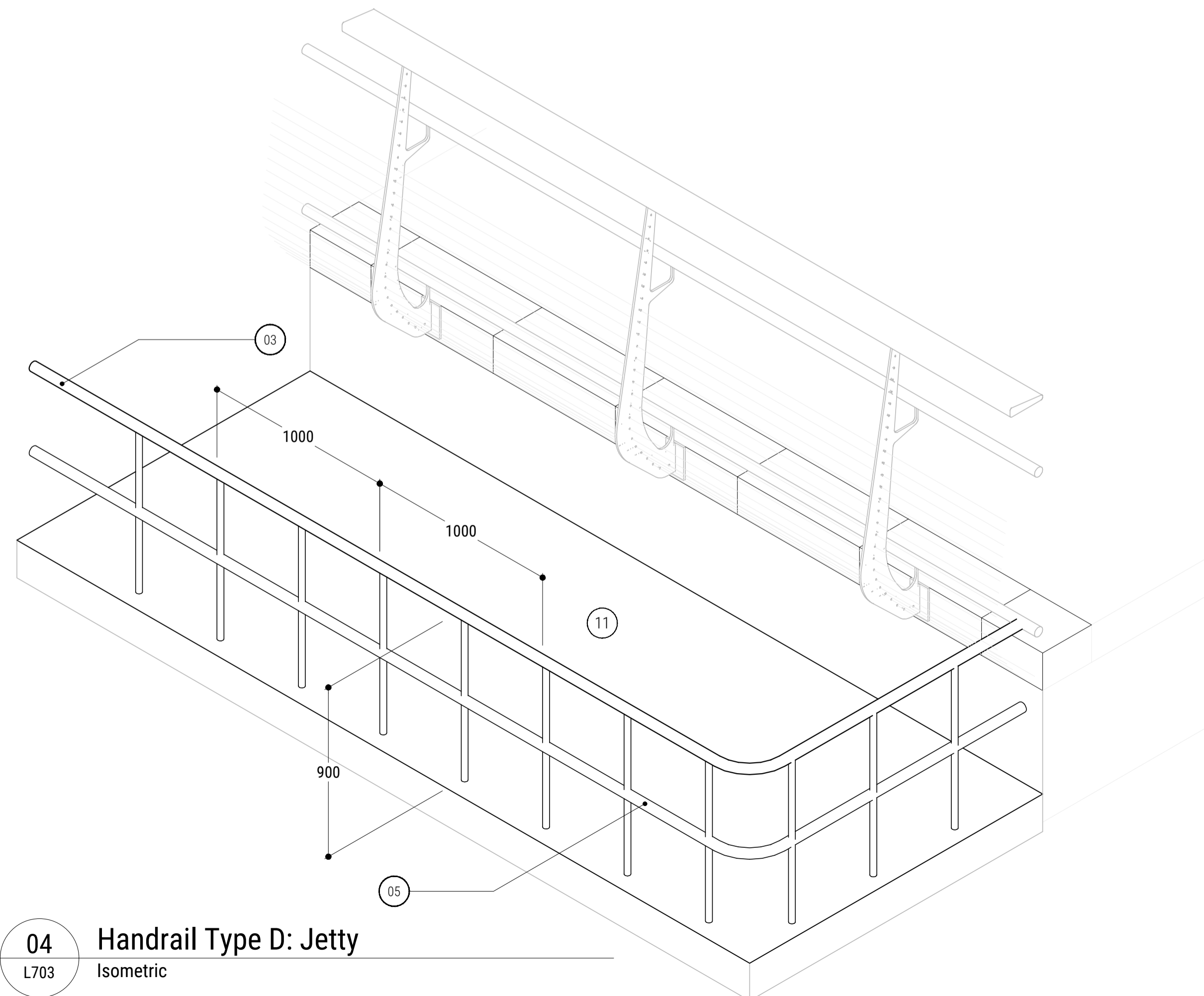
01 Handrail Type A: Cycleway
L703 Isometric



02 Handrail Type B: Footway and Steps
L703 Isometric



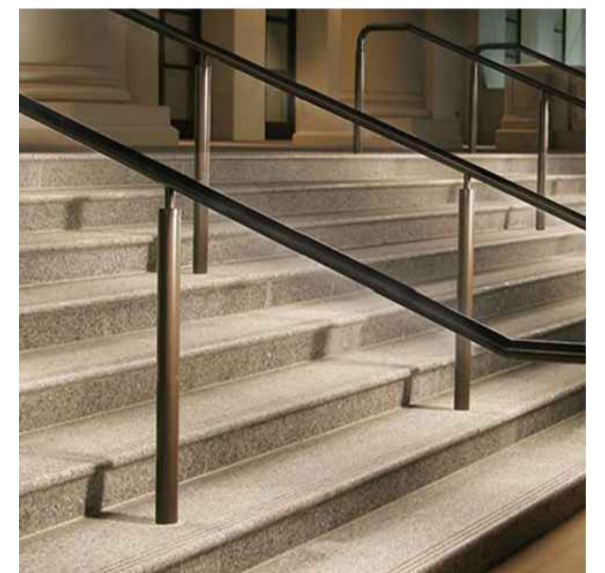
03 Handrail Type C: Seatwall at Inspection Chamber
L703 Isometric



04 Handrail Type D: Jetty
L703 Isometric

1. Top guardrail at primary cycleway path - stainless steel finish, 1400mm above FFL, 200mm (W) x 50mm (H)
2. Secondary guardrail at cycleway and steps areas, stainless finish steel, 1000mm above FFL, 50mm Ø
3. Top guard rail at jetty, stainless steel finish, 900mm above FFL, 50mm Ø
4. Half rail at seat wall, stainless steel finish steel above concrete wall, 1000mm above FFL, 50mm Ø
5. Mid-height guardrail at jetty, stainless steel finish, 900mm above FFL, 30mm Ø
6. Base kick rail at guardrail, stainless steel finish, 150mm above FFL, 30mm Ø
7. Base seat rail at seat wall, stainless steel finish, 600mm above FFL, 30mm Ø
8. Steel plate post with steel cable wire at 60mm on-centre, height varies
9. Proposed seat wall at inspection chamber area to west of site.
10. Flush granite kerb at canal-side of path
11. Adjacent surface
12. LED lighting beneath handrail

12: LED Lighting beneath handrail
Exemplar image



Design of greenway bollards to materiality and stylistically match that of adjacent furniture, as below (or similar / equal approved).



notes
Do not scale from drawing, use figured dimensions only.
All dimensions are to be checked on site by contractor prior to commencement of all work.
Discrepancies should be reported immediately.
This drawing is to be read in conjunction with all other TPHC drawings and specification.
This drawing is the copyright of the Landscape Architect and must not be reproduced or used without permission.
Ordnance information base information shown is reproduced from Ordnance Survey material © Crown copyright 2018 Licence Number 100034836.

revision	description	date	author
P01	Update on design team coordination	19-04-23	BD
P02	Design detail amendment (lighting)	13-06-23	BD

the paul hogarth company

LANDSCAPE ARCHITECTURE / URBAN DESIGN / PLANNING

e: edinburgh@paulhogarth.com e: belfast@paulhogarth.com e: dublin@paulhogarth.com
t: +44 (0)131 331 4611 t: +44 (0)28 9073 6690 t: +353 (0)1 897 0272

visit us at www.paulhogarth.com / find us on: [facebook](https://www.facebook.com/paulhogarth) / [twitter](https://twitter.com/paulhogarth) / [instagram](https://www.instagram.com/paulhogarth) / [linkedin](https://www.linkedin.com/company/paulhogarth)

created	22/02/2023	drawn	BD	checked	BD	scale @ A1	N/A
project code	1454	drawing number	L703	revision			P01

client: DUBLIN CITY COUNCIL

project: BINNS BRIDGE, ROYAL CANAL

drawing: GUARDRAILS

status: PLANNING