

School Community & Neighbourhood Leaflet

St. Brigid's GNS, Killester, Dublin 5

24 June 2024

Dublin City Council, with the support of the National Transport Authority, proposes to implement front-of-school works to improve the safety of students and vulnerable road users accessing and exiting St. Brigid's GNS, Killester, Dublin 5

What are School Zones?



School Zones are built, infrastructural upgrades that are designed to give priority to students at the school gate by freeing up footpaths and reducing vehicle drop-offs, pick-ups and engine idling. The aim is to increase safety at the front of school and prioritise active travel (walking, cycling, wheeling and scooting) to and from school.

Image 1: Example School Zone at Star of the Sea School, Sandymount, Dublin 4

School Zones are implemented around the world in order to:

- Increase student safety
- Reduce vehicle drop-offs, pick-ups and idling outside the school gate
- Reduce congestion and prioritise active travel (walking, cycling, wheeling and scooting) to and from school
- Encourage slow, safe driving in the area of the school
- Promote considerate parking
- Reduce emissions and pollution, and improve air quality and noise quality by reducing volume of traffic at schools and vehicles with engines idling

School Community & Neighbourhood Leaflet

St. Brigid's GNS, Killester, Dublin 5

Where will these works take place?

These works will take place on St. Brigid's Road and part of School Avenue.

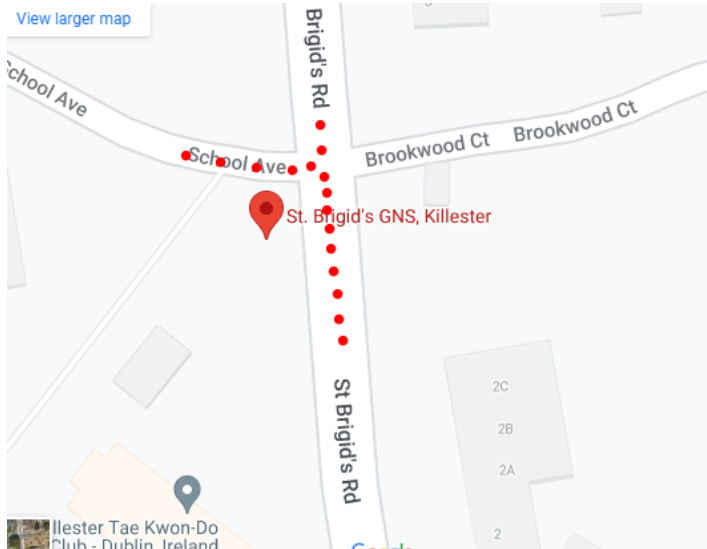


Image 2: Extent of works at St. Brigid's GNS, Killester

What works will take place at St. Brigid's GNS, Killester?

The works will consist of:



Rigid **yellow pencil bollards** will be installed along the edge of the footpath on School Avenue and St. Brigid's Rd. This is to prevent illegal parking on the footpaths and provide safer passage and more room for pedestrians. These are depicted as pink dots on the design drawing.

Image 3: Example pencil bollards on footpath, Cromcastle, Kilmore, Dublin 5

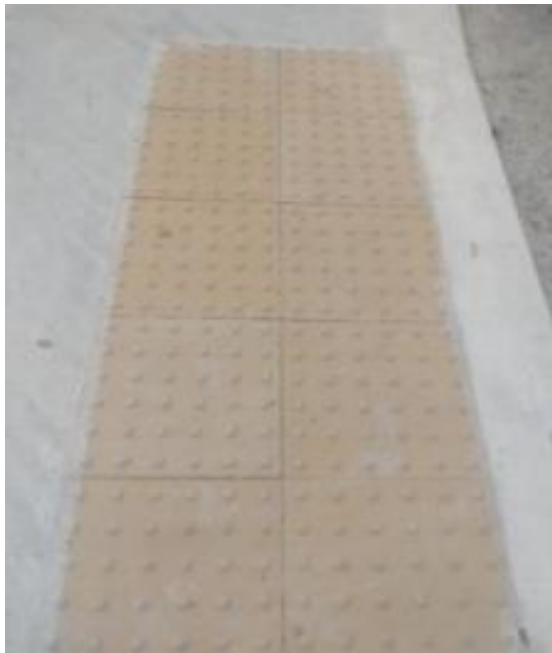
School Community & Neighbourhood Leaflet

St. Brigid's GNS, Killester, Dublin 5

'School Zone' road surface signs will be painted directly on St. Brigid's Rd and School Avenue on approach to the school gate. This is to advise motorists they are in a School Zone and to drive accordingly.



Image 4: Example road surface sign for School Zone, Leinster Road, Rathmines, Dublin 6



New **School Warden Crossings** will be introduced. The footway at the crossing points will be dished with **buff coloured tactile blister pavement inserts** added. This tactile paving prevents trips and slips. The paving is more user friendly for people with mobility and visual impairment needs.



Images 5 and 6: Example school warden crossing and buff paving at Scoil Neasáin, McAuley Rd, Dublin 5

School Community & Neighbourhood Leaflet

St. Brigid's GNS, Killester, Dublin 5



Colourful road markings consisting of yellow and red circles will be painted directly on the road on St. Brigid's Rd and School Avenue. These raise awareness of the presence of the school.

Image 7: Example 'Colourful Circle Road Markings' Scoil Fhursa Cromcastle



A School Ahead signs with flashing amber signals will be installed on St. Brigid's Rd to alert drivers that they are entering a school zone and to drive accordingly.

Image 8: Example 'School Ahead' sign with flashing amber signal

School Community & Neighbourhood Leaflet

St. Brigid's GNS, Killester, Dublin 5

Why are we implementing this School Zone?

Traffic-related safety concerns have been reported and observed by the schools, parents, neighbours, Dublin City Council's School Warden Service, Parking Enforcement and School Mobility Officer, including:

- Cars parking on both sides of the road at the school entrances on St Bridget's Rd causes congestion.
- Cars parking on both sides of School Avenue Cul de Sac on double yellow lines.
- The traffic on School Avenue Cul de Sac causes further congestion on St Brigid's Rd.
- Congestion at pick up and drop off times results in buses being unable to pass.
- Children need more space to move at the pedestrian and main entrance to the school.

Share your thoughts from 24 June to 08 July 2024

If you would like to share comments or thoughts on these works please contact us via:

- **Online survey:** <https://consultation.dublincity.ie/> (search St. Brigid's GNS, Killester) has all of the details listed here as well as a portal through which to give feedback
- **Email:** sustainablemobility@dublincity.ie (with St. Brigid's GNS, Killester in the subject bar)
- **Phone:** Customer Services Desk (01) 222 2222 who will refer you to an available member of the School Mobility team
- **Postal Address:** School Mobility Programme, City Centre Transports Projects, Block 2, Floor 7, Civic Offices, Wood Quay, Dublin 8, Ireland, D08 RF3F

This period of non-statutory consultation closes at midnight on 08 July 2024.

What happens next?

We will review all the comments and observations and, where appropriate, make required changes to the design. Works will then be scheduled for installation.

For the School Zone front-of-school treatment to work effectively, parents who need to drive must be willing to change their drop off and pick up habits. **Parents and guardians will be encouraged not to collect and drop off within the School Zone.** They must park respectfully and legally outside of the School Zone by not blocking other entrances, mounting footpaths or double parking.

Full drawings and School Zone guidance documents are available online at <https://consultation.dublincity.ie/> (search St. Brigid's GNS, Killester).

