

# School Community & Neighbourhood Leaflet

## School Zone Kildare Place School, Upper Rathmines Road, Rathmines, Dublin 6

8 November 2023

Dublin City Council with the support of the National Transport Authority proposes to implement Front-of-School works to improve the safety of students and vulnerable road users accessing and exiting Kildare Place National School, Rathmines, Dublin 6.

### What are School Zones?

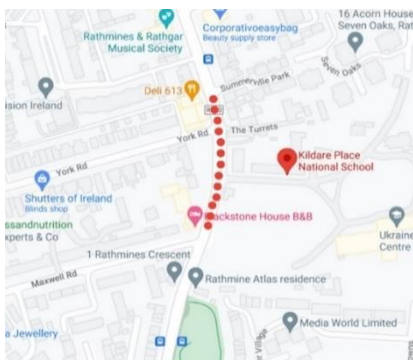


School Zones are built infrastructural upgrades that are designed to give priority to students at the school gate by freeing up footpaths and reducing vehicle drop-offs, pick-ups and idling. The aim is to increase safety at the front of school and prioritise active travel (walking, cycling, wheeling and scooting) to and from school.

Image 1: Example of School Zone at Star of the Sea School, Sandymount, D4

School Zones are implemented around the world in order to:

- Increase student safety.
- Reduce vehicle drop-offs, pick-ups and idling outside the school gate.
- Reduce congestion and prioritise active travel (walking, cycling, wheeling and scooting) to and from school.
- Encourage slow, safe driving in the area of the school.
- Promote considerate parking.
- Reduce emissions and pollution, and improve air quality and noise quality by reducing volume of traffic at schools and vehicles with engines idling.



### Where will these works take place?

These works will take place on Rathmines Road Upper from the junction with Summerhill Park to the junction with Maxwell Road.

Image 2: Extent of works at Kildare Place School

## School Community & Neighbourhood Leaflet

### School Zone Kildare Place School, Upper Rathmines Road, Rathmines, Dublin 6

#### What works will take place at Kildare Place, Rathmines, Dublin 6?

The works will consist of:



**Blue and green pencil bollards** along the edge of the northern and southern carriageway of Rathmines Road Upper from the junction with Summerhill Park to the junction with Maxwell Road. These are depicted as blue and green dots on the design drawing.

All house vehicular entrances to remain unobstructed.

*Image 3: Example Pencil Bollard on Footpath, Cromcastle, Kilmore, D5*

**School Zone road surface signs** will be painted directly on the road outside the school on Rathmines Road Upper. This is to advise motorists they are in a School Zone and to drive accordingly.



*Image 4: Example Road Surface Sign for School Zone, Leinster Road, Rathmines, D6*



**Colourful road markings** consisting of yellow, orange and red circles painted directly on the road at entrance to St. Clare's Convent National School and Harold's Cross Educate Together Secondary School.

*Image 5: Example circle road surface markings, Thornville Rd, Kilbarrack, Dublin 5*

## School Community & Neighbourhood Leaflet

### School Zone Kildare Place School, Upper Rathmines Road, Rathmines, Dublin 6



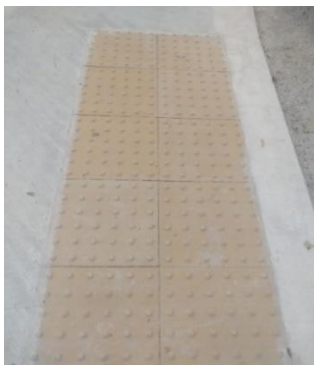
The two existing School Ahead signs will be upgraded to two **School Ahead signs with Flashing Amber signals** on Rathmines Road Upper at the junction with Summerhill Park and at the junction with Maxwell Road.

*Image 6: Example of a School Ahead sign with flashing amber signals.*

A signalised pedestrian crossing will be installed outside the school on Rathmines Road Upper to facilitate a safe crossing point for students and local residents.



*Image 7: Example pedestrian crossing, Armagh Road, Dublin 12*



The footway at three crossing points on Rathmines Road Upper is to be reprofiled and dished, with buff coloured tactile blister pavement inserts added. This **tactile paving** prevents trips and slips. The paving is more user-friendly for people with mobility and visual impairment needs. They are depicted as brown hatching on the path in the design drawing.

*Image 8: Example tactile blister pavements inserts*

## School Community & Neighbourhood Leaflet

### School Zone Kildare Place School, Upper Rathmines Road, Rathmines, Dublin 6

Two proposed **speed ramps** will be installed on Rathmines Road Upper to reduce the speed of cars outside the school.



Image 9: Example speed ramp, Cook Street, Dublin 8

### Why are we implementing this School Zone?

Traffic related safety concerns have been reported and observed by the school, parents, neighbours, Dublin City Council's School Warden Service, Parking Enforcement and School Mobility Officer, including:

- Parking on footpaths along Rathmines Road Upper causing unsafe conditions for students walking, scooting or cycling to school
- Safety issues arising from the poor visibility of the school
- The high volume of vehicular traffic and related congestion at school drop-off and collection times
- Safety issues arising from speeding cars on Rathmines Road Upper

### Share your thoughts from 10 November 2023 to 23 November 2023

If you would like to share comments or thoughts on these works please contact us via:

- **Online Survey:** available at <https://consultation.dublincity.ie/> - search for Kildare Place National School in the search bar
- **Email:** [sustainablemobility@dublincity.ie](mailto:sustainablemobility@dublincity.ie) (with **Kildare Place National School** in the subject bar)
- **Phone:** Customer Services Desk 01 222 2222 they will refer you to an available member of the School Mobility team.
- **Postal Address:** School Mobility Programme, City Centre Transports Projects, Block 2, Floor 7, Civic Offices, Wood Quay, Dublin 8, Ireland, D08 RF3F

This period of non-statutory consultation closes at midnight on 23 November 2023.

### What happens next?

We will review all the comments and observations and, where appropriate, make required changes to the design. Works will then be scheduled for installation.

For the School Zone front-of-school treatment to work effectively, parents who need to drive must be willing to change their drop off and pick up habits. **Parents and guardians will be encouraged not to**

4

# School Community & Neighbourhood Leaflet

## School Zone Kildare Place School, Upper Rathmines Road, Rathmines, Dublin 6

collect and drop off within the School Zone. They must park respectfully and legally outside of the School Zone by not blocking other entrances, mounting footpaths or double parking.

Full drawings and School Zone guidance documents are available online at <https://consultation.dublincity.ie/> (search Kildare Place School).

A hard copy poster of the design will be on view at the school gate.

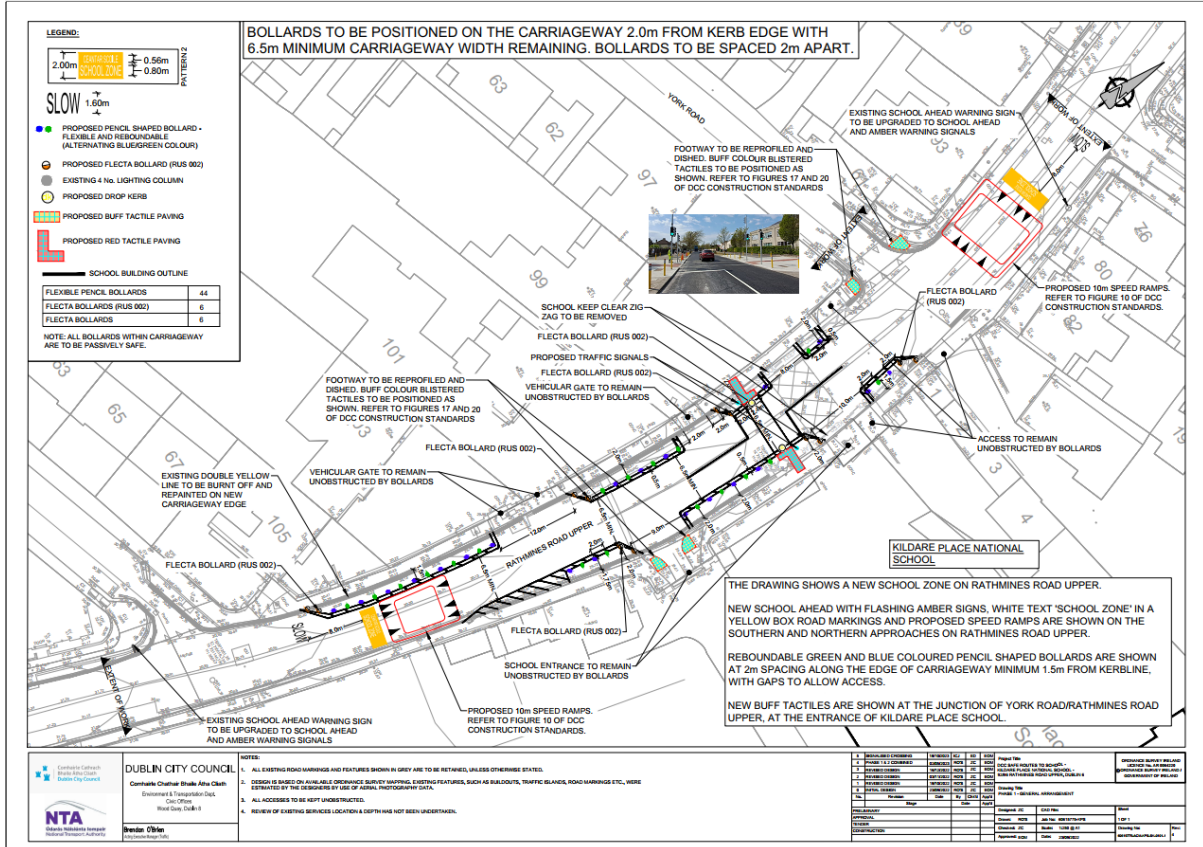


Image 10: Snippet of design drawing for Kildare Place School