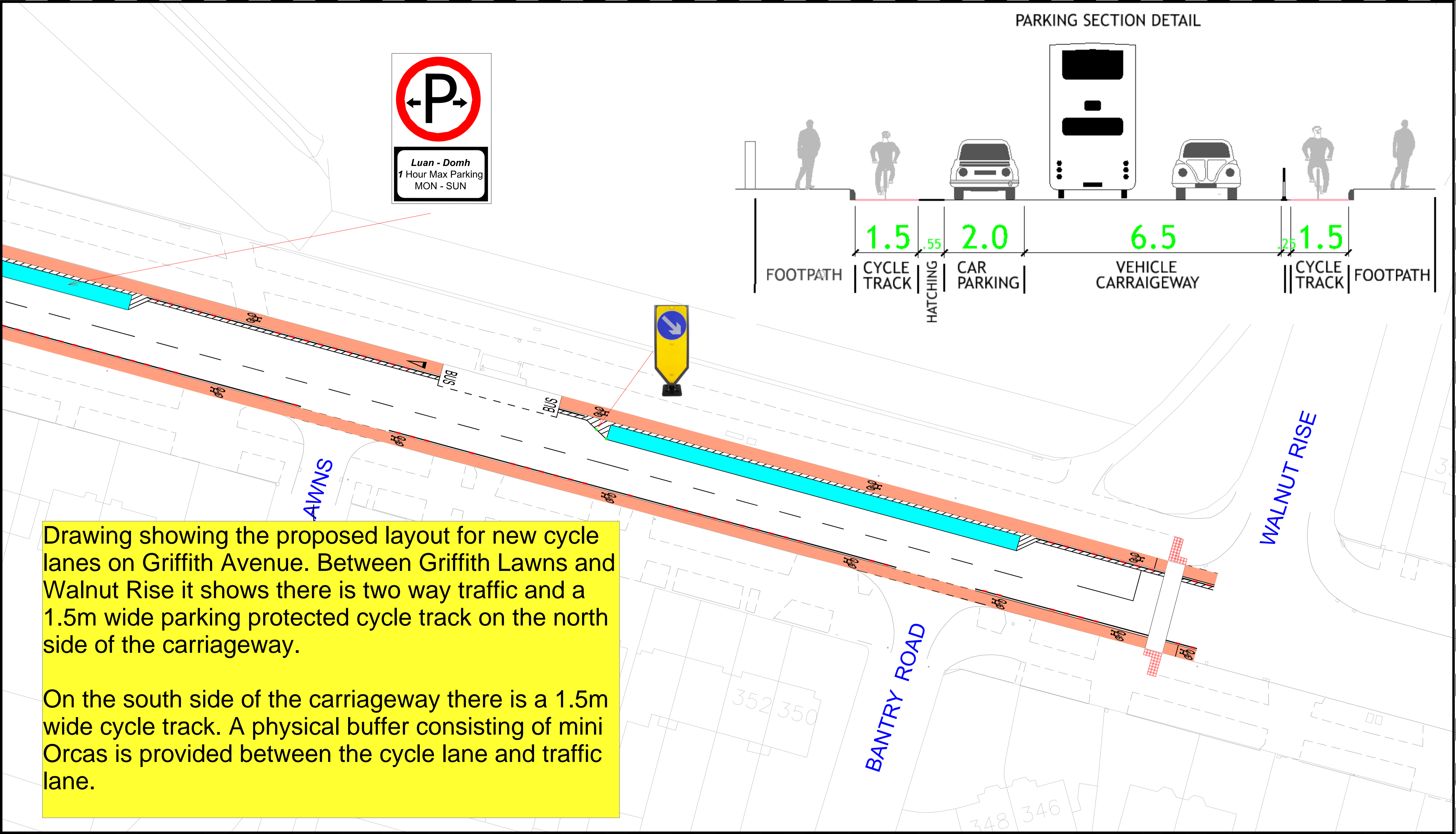
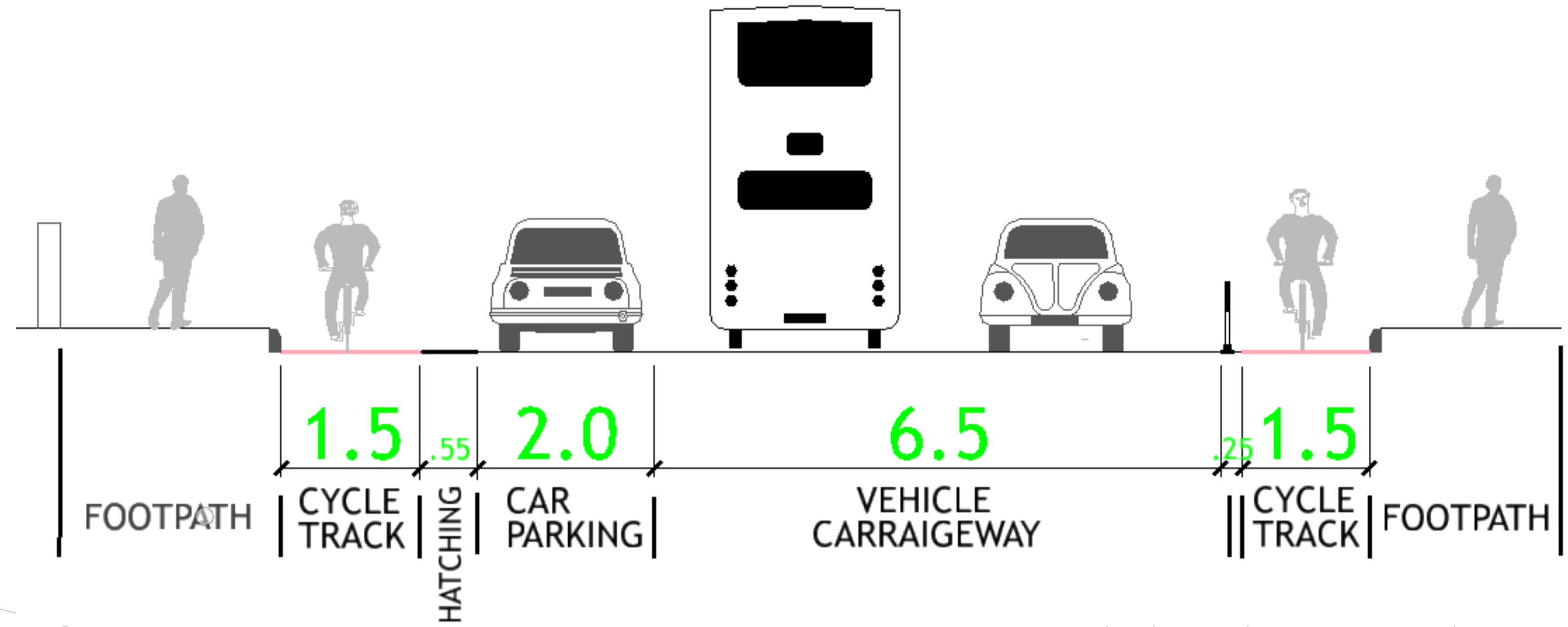


PARKING SECTION DETAIL



Drawing showing the proposed layout for new cycle lanes on Griffith Avenue. Between Griffith Lawns and Walnut Rise it shows there is two way traffic and a 1.5m wide parking protected cycle track on the north side of the carriageway.

On the south side of the carriageway there is a 1.5m wide cycle track. A physical buffer consisting of mini Orcas is provided between the cycle lane and traffic lane.