

School Community & Neighbourhood Leaflet

School Zone Drumcondra National School Church Ave, Grace Park Rd,
Drumcondra, Dublin 9

24th April 2023

Dublin City Council with the support of the National Transport Authority proposes to implement Front-of-School works to improve the safety of students and vulnerable road users accessing and exiting schools at Drumcondra National School, Church Ave, Grace Park Rd, Drumcondra, Dublin 9.

What are School Zones?



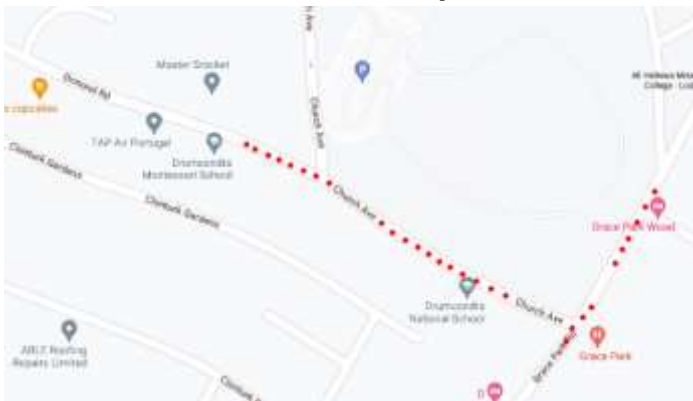
School Zones are built infrastructural upgrades that are designed to give priority to students at the school gate by freeing up footpaths and reducing vehicle drop-offs, pick-ups and idling. The aim is to increase safety at the front of school and prioritise active travel (walking, cycling, wheeling and scooting) to and from school.

Image 1: Example of School Zone at Star of the Sea School, Sandymount, D4

School Zones are implemented around the world in order to:

- Increase student safety.
- Reduce vehicle drop-offs, pick-ups and idling outside the school gate.
- Reduce congestion and prioritise active travel (walking, cycling, wheeling and scooting) to and from school.
- Encourage slow, safe driving in the area of the school.
- Promote considerate parking.
- Reduce emissions and pollution, and improve air quality and noise quality by reducing volume of traffic at schools and vehicles with engines idling.

Where will these works take place?



These works will take place on Church Ave and Grace Park Road, Drumcondra, Dublin 9.

Image 2: Extent of Works at Drumcondra National School

School Community & Neighbourhood Leaflet

School Zone Drumcondra National School Church Ave, Grace Park Rd,
Drumcondra, Dublin 9

What works will take place at Drumcondra National School, Church Ave, Grace Park Rd, Drumcondra, Dublin 9?

The works will consist of:



Kilmore, D5

Blue and Green Pencil bollards along the edge of the southern carriageway of Church Avenue from its junction with Grace Park road to the school entrance. These are depicted as blue and green dots on the design drawing.

Yellow Pencil bollards on the east side of the footpath on Grace Park road adjacent to the existing ramp to prevent illegal parking on the path and to raise awareness of the presence of Grace Park Educate Together School entrance. These are depicted as orange dots on the design drawing.

All house vehicular entrances to remain unobstructed.

Image 3: Example Pencil Bollard on Footpath, Cromcastle,

Colourful road markings consisting of yellow and red circles painted directly on the road on Church Avenue outside the school entrance.

Image 4: Example Circle Road Surface Markings, Thornville Rd, Kilbarrack, D5



School Zone road surface signs will be painted directly on the road outside the school on Church Avenue on approach from Ormond Road and Grace Park road.

Image 5: Example Road Surface Sign for School Zone, Leinster Road, Rathmines, D6

School Community & Neighbourhood Leaflet

School Zone Drumcondra National School Church Ave, Grace Park Rd, Drumcondra, Dublin 9



The existing **speed cushions** on Church Avenue and Grace Park Road will be retained.

Image 6: Example Speed Ramp, Strand Road, Sandymount D4

A **right turn ban** will be implemented southbound on approach to the junction of Church Avenue from Grace Park Road (**08.00 - 09.00 and 13.00- 14.30 Hours Monday to Friday**).

A **left turn ban** will be implemented northbound on approach to the junction of Church Avenue from Grace Park Road (**08.00 - 09.00 and 13.00- 14.30 Hours Monday to Friday**).

These **no right and left turn restrictions** are to facilitate the movement of vehicles on this narrow road at school times. Sometimes vehicles mount the narrow footpaths to deal with vehicular congestion. The school has to put out yellow parking cones and assist children to cross to manage this behaviour.

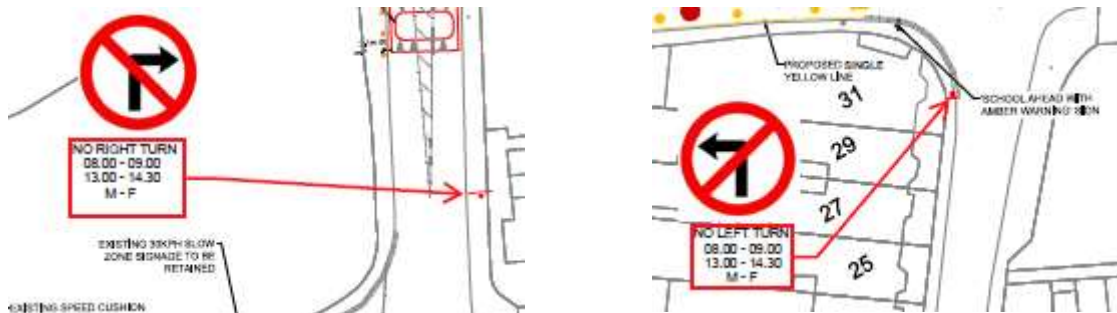


Image 7: Example Right and Left Turn Ban Signs

School Community & Neighbourhood Leaflet

School Zone Drumcondra National School Church Ave, Grace Park Rd,
Drumcondra, Dublin 9



2 new **School Ahead with Flashing Amber signs** will be installed on the southern side of Church Avenue at the junction with Grace Park road, and on the northern side of Ormond Road.

Image 8: Example School Ahead Flashing Amber Sign, Sandford Road, D6

A **single yellow line** will be implemented the southern side of Church Avenue, outside the school entrance with **parking prohibited 08.00-15.00 Hours Monday to Friday**. This is depicted as a single yellow line on the southern side of the design drawing.



Image 9: Example Single Yellow Line

The **existing double yellow lines** remain outside the school on both sides of Church Avenue. These are depicted as double black lines next to the kerb on the design drawing.



Image 10: The Existing Double Yellow Lines Outside Drumcondra National School

School Community & Neighbourhood Leaflet

School Zone Drumcondra National School Church Ave, Grace Park Rd,
Drumcondra, Dublin 9

Why are we implementing this School Zone?

Traffic related safety concerns have been reported and observed by the schools, parents, neighbours, Dublin City Council's School Warden Service, Parking Enforcement and School Mobility Officer, including:

- Mounting of footpaths on Church Avenue when large vehicles want to pass each other with limited awareness that the school is situated on the road.
- Speeding towards the school to try and avoid congestion at the school gates where the road narrows.
- Close proximity of children to traffic due to narrow footpaths.
- The high volume of vehicular traffic at school drop-off and collection times.
- Safety issues relating to the very narrow road with poor visibility at corners accommodating two lanes of traffic.



Image 11: Example of cars trying to pass at the front of Drumcondra National School

Share your thoughts from 24th April 2023 to 12th May 2023

If you would like to share comments or thoughts on these works please contact us via:

- **Email:** sustainablemobility@dublincity.ie (with **Drumcondra National School** in the subject bar).
- **Phone:** Customer Services Desk 222 2222 they will refer you to an available member of the School Mobility team.
- **Postal Address:** School Mobility Programme, City Centre Transports Projects, Block 2, Floor 7, Civic Offices, Wood Quay, Dublin 8, Ireland, D08 RF3F.

This period of non-statutory consultation closes at midnight on 12th May 2023.

School Community & Neighbourhood Leaflet

School Zone Drumcondra National School Church Ave, Grace Park Rd, Drumcondra, Dublin 9

What happens next?

We will review all the comments and observations and, where appropriate, make required changes to the design. Works will then be scheduled for installation.

For the School Zone Front-of-School treatment to work effectively, parents who need to drive must be willing to change their drop off and pick up habits. **Parents and guardians will be encouraged not to collect and drop off within the School Zone.** They must park respectfully and legally outside of the School Zone by not blocking other entrances, mounting footpaths or double parking.

Full Drawings and School Zone guidance documents are available online at <https://consultation.dublincity.ie/> (search Drumcondra National School).

A hard copy poster of the design will be on view at the school gate.

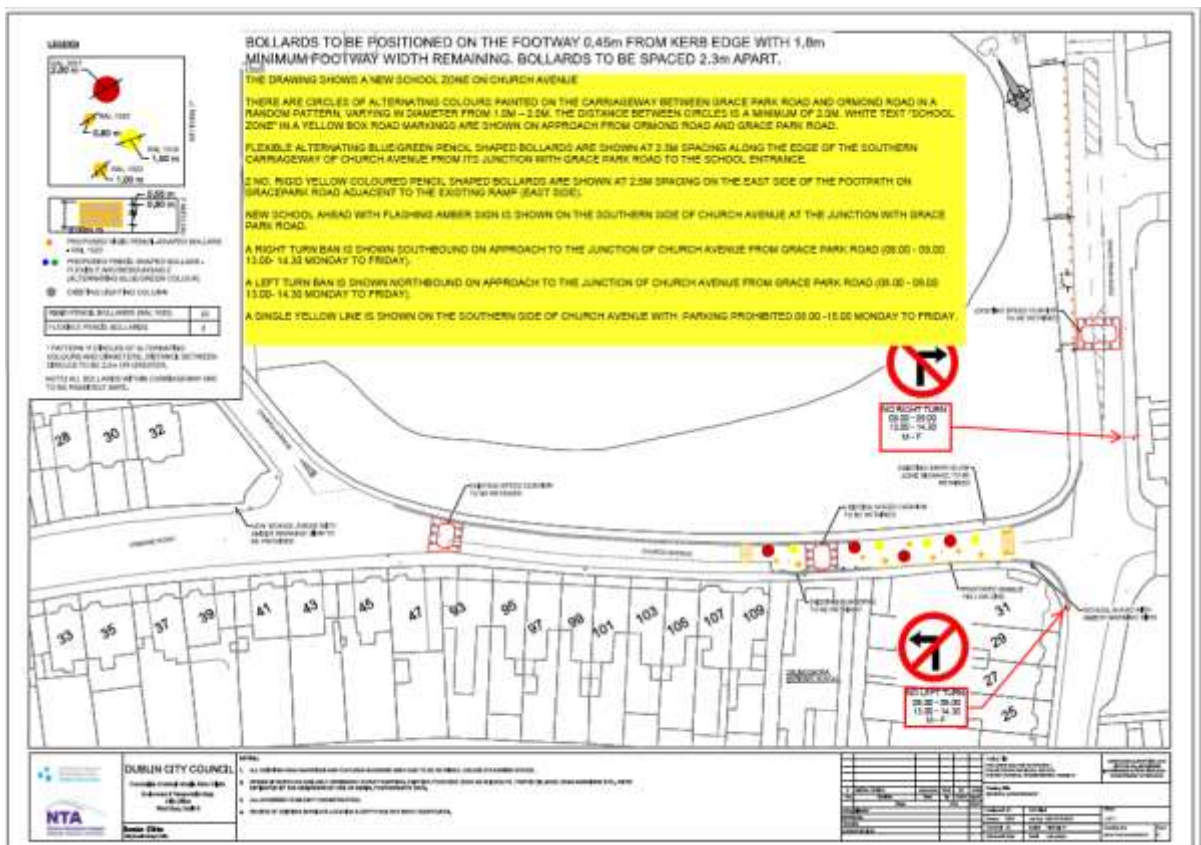


Image 12: Snippet of Design Drawings for Drumcondra National School