

SITE VISIT WORKBOOK



SANTRY RIVER RESTORATION & GREENWAY

Dublin City Council, Fingal County Council, National Transport Authority



Comhairle Cathrach
Bhaile Átha Cliath
Dublin City Council

Comhairle Contae
Fhine Gall
Fingal County
Council



NTA
Údarás Náisiúnta Iompair
National Transport Authority

AGENDA SEPTEMBER 2022

DAY 1 - THURSDAY SEP 8

AREA 1 AND 2 10.00 -12:00
*THE COAST TO RAHENY VILLAGE AND THE TRAIN LINE
RAHENY VILLAGE TO MALAHIDE ROAD*

AREA 3 14:30-16:30
MALAHIDE ROAD TO CLONSHAUGH ROAD

DAY 2 - FRIDAY SEP 9

AREA 4 AND 5 10.00 - 12.00
*CLONSHAUGH ROAD TO M50.
M50 TO R108*

AREA 6 14.30- 16.30

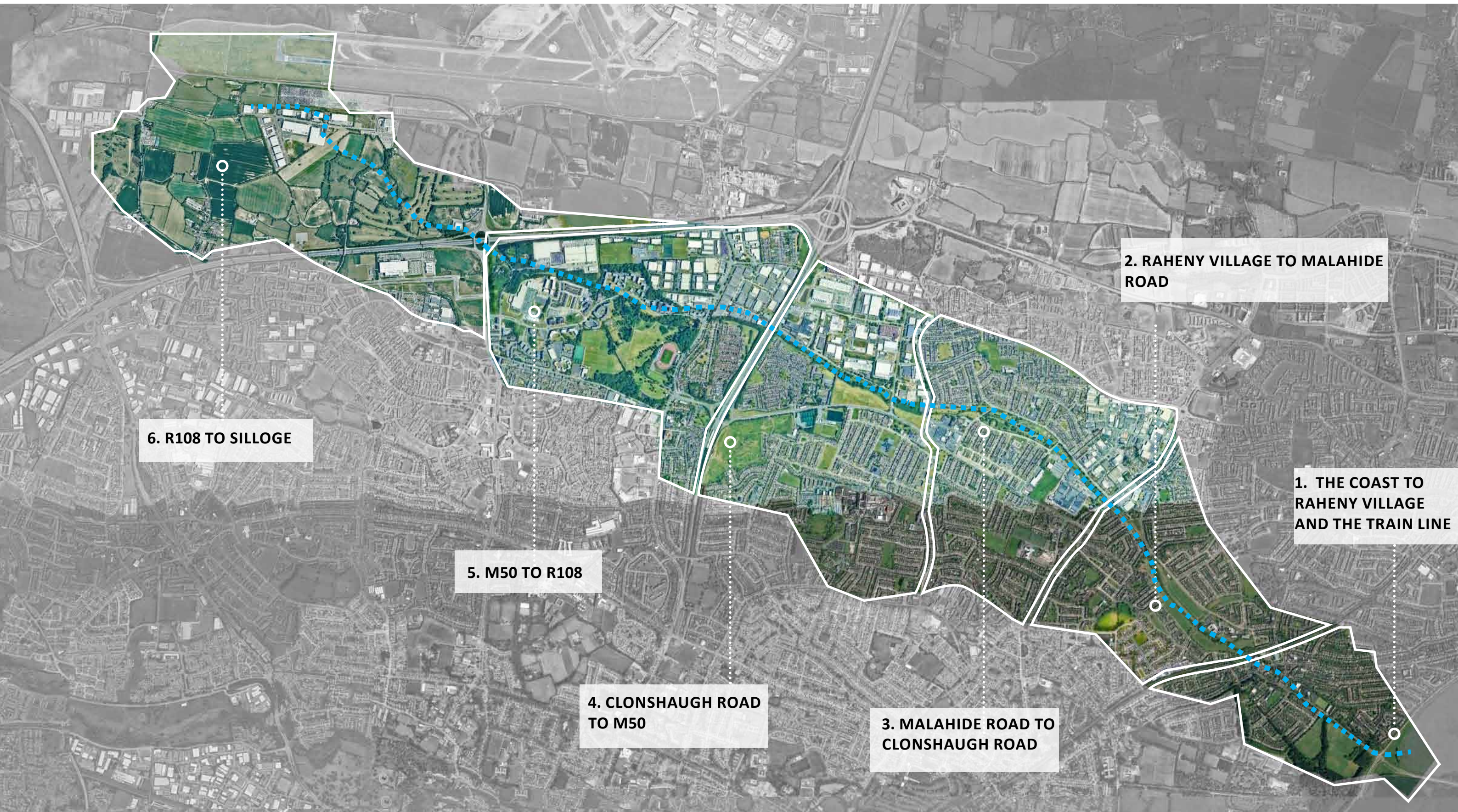
Client: Dublin City Council, Fingal County Council, National Transport Authority.

The project is co created with stakeholders, the client and a team of specialists led by Nicholas O'Dwyer Ltd Consulting Engineers in collaboration with REDscape Landscape & Urbanism and Cbec Eco Engineering.

Publication date: 25.08.2022

WHAT DO YOU WANT FOR THE RIVER'S FUTURE PUBLIC REALM ?

JOIN US AT YOUR LOCATION/S 1 TO 6 FOR A SITE VISIT



2. RAHENY VILLAGE TO MALAHIDE ROAD

6. R108 TO SILLOGE

1. THE COAST TO RAHENY VILLAGE AND THE TRAIN LINE

5. M50 TO R108

4. CLONSHAUGH ROAD TO M50

3. MALAHIDE ROAD TO CLONSHAUGH ROAD

Santry river

GENERAL THEMES



1. The Coast to Raheny village and the train line

1. THE COAST TO RAHENY VILLAGE AND THE TRAIN LINE

DESIGN THEMES: AMENITY NETWORKS AND HUBS, NEW ACTIVITIES, HERTIAGE, FLOOD MITIGATION, GREENING AND BIODIVERSITY, AGE FRIENDLY PUBLIC REALM, A DESIRABLE AND ATTRACTIVE DESTINATION.

Existing Objectives:

- An attractive, sustainable and well maintained coastal village with a vibrant local community
- Developing the Raheny Way: three looped walks from Raheny Village
- Developing the bridge over the Santry River?
- Developing of the Heritage trail (in partnership with the Raheny Heritage Society)
- Working on sustainable improvement projects for Raheny. Examples are the rain water harvesting project, leaf composting project, sustainable planting projects, the pollinator project and Santry river survey
- Protecting the heritage of Raheny, working to develop Raheny as a tourist destination and by exploiting our location in the Dublin UNESCO Biosphere.
- Collaborating with local business, Dublin City Council, schools and other voluntary groups in the area on projects to enhance the environment in Raheny Village.
- Local flooding issues. How can we solve flooding in a sustainable way, to improve the long-term future of the river and its surroundings?

New opportunities:

- How can Watermill Road or adjacent areas be altered to facilitate a greenway?
- How can the River Santry improve the biodiversity of Raheny Village as part of the Dublin UNESCO Biosphere ?
- Can the Greenway contribute to the development of the Raheny Way and Heritage trail?
- How can the River restoration and Greenway project contribute to sustainable improvement projects in Raheny and offer benefits to residents and businesses ?
- How can the River Santry become an active, visible part of Raheny Village?
- The River Santry and the Greenway could diverge at Raheny. Can the river still be made accessible for pedestrians or other users?
- How can the River Santry strengthen the heritage of the area?
- Are facilities such as bike parking, meeting points, outdoor gym, wayfinding or other amenities desirable for Raheny?
- How can Rail line / DART Station interface with Greenway?
- How can the hidden river become more visible to the community?



.Causeway Rd-Coast



Avondale Park residential



.Watermill lawn residential



Main Street



.Howth Road -Raheny Parish church



- Feasibility cycling route (study)
- Santry river
- Possible stopping points



- - - Feasibility cycling route (study)
- - - - Santry river
- Possible stopping points



- - - Feasibility cycling route (study)
- Santry river
- Possible stopping points

INSPIRATION FOR POSSIBLE IDEAS



Improving ecology along the river ?



Sustainable improvement projects?



An attractive greenway for families

An eco friendly river made accessible in an urban setting?



SKETCH YOUR IDEAS AND GIVE US YOUR FEEDBACK

2. Raheny Village to Malahide Road

2. RAHENY VILLAGE TO MALAHIDE ROAD

THEMES: A NATURALISED RIVER, CONNECTIONS TO SURROUNDING AREAS, SPORTS PITCHES, SAFETY, BIODIVERSITY, NEIGHBOURHOOD AMENITIES.

Existing Objectives:

Link community areas like schools, hospitals and Coolock town centre to the River Park.

Create safe cycle and pedestrian crossings at Harmonstown Road and Tonlegee Road.

Remove the river from its concrete restraints and allow it to meander.

Improve the biodiversity of the river Santry by creating a wilder more varied landscape for nature.

Provide stopping points to enjoy and experience the naturalised river.

Promote sustainable improvement projects; such as the rain water harvesting project, leaf composting project, sustainable planting projects, the pollinator project and Santry river survey.

Improve unsightly areas along the margins of the River, such as bottle banks (near St John's), parking areas or disused sites.

Improve the access of the river to and from residential areas for amenity walks and loops.

Integrate view lines from streetscapes into the River Park where possible to improve community safety.

Integrate the Edenmore sensory garden into the River Park.

Strengthen the heritage of the area (Coolock and Artane).

New opportunities:

If the River is removed from its concrete drain and allowed to meander as a natural river, what would that landscape look like?

How can the Greenway and river restoration tie into Coolock town centre, Harmonstown and other areas to benefit to residents and businesses?

How can the sport pitches at St Malalchy's be best integrated into the river landscape and can they be accessed from both sides of the river?

How can the heritage of Coolock and Artane be strengthened?

How can the River Santry become more visible at crossings and bridges?

How can safe crossing be achieved at intersecting roads?

The edges of the river Santry are important. How can they be improved and are there opportunities to better access the new greenway and the river?

How can the heritage of the river Santry be celebrated?

Develop a set of pedestrian and cycling bridges for new crossings (if required).

Integrate view lines from streetscapes into the River Park to improve safety and social control where possible.



.View to Santry river-Springdale Rd



.View to Santry river-Springdale Rd



.Santry river-Tonlegee Rd



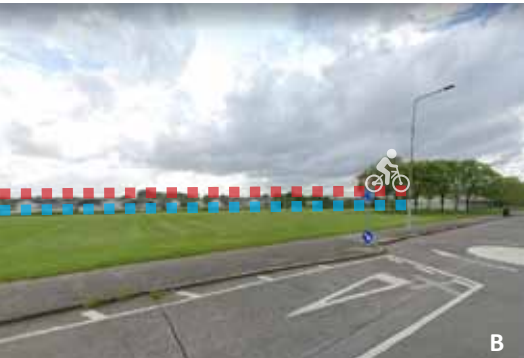
.View to Santry river-Moatfield Rd Street



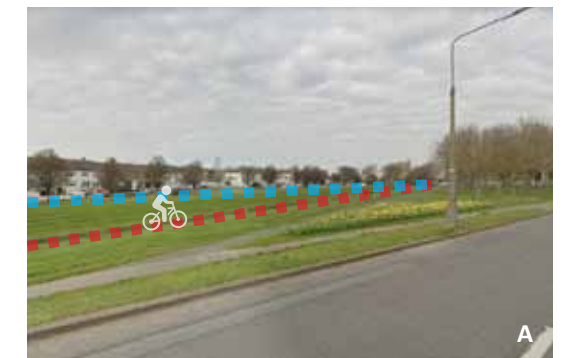
.View to Santry river-Site of former meandering



- - - Feasibility cycling route (study)
- - - Santry river
- Possible stopping points



- - - Feasibility cycling route (study)
- - - Santry river
- Possible stopping points



- - - Feasibility cycling route (study)
- - - Santry river
- Possible stopping points

INSPIRATION FOR POSSIBLE IDEAS



Crossings and connections ?



Community schools and hospitals connecting with the River Park?



Developing a meandering river with so-kage areas

Sport/ play areas in the River Park ?



SKETCH YOUR IDEAS AND GIVE US YOUR FEEDBACK

INSPIRATION FOR POSSIBLE IDEAS

3. Malahide Road to Clonshaugh Road

3. MALAHIDE ROAD TO CLONSHAUGH ROAD

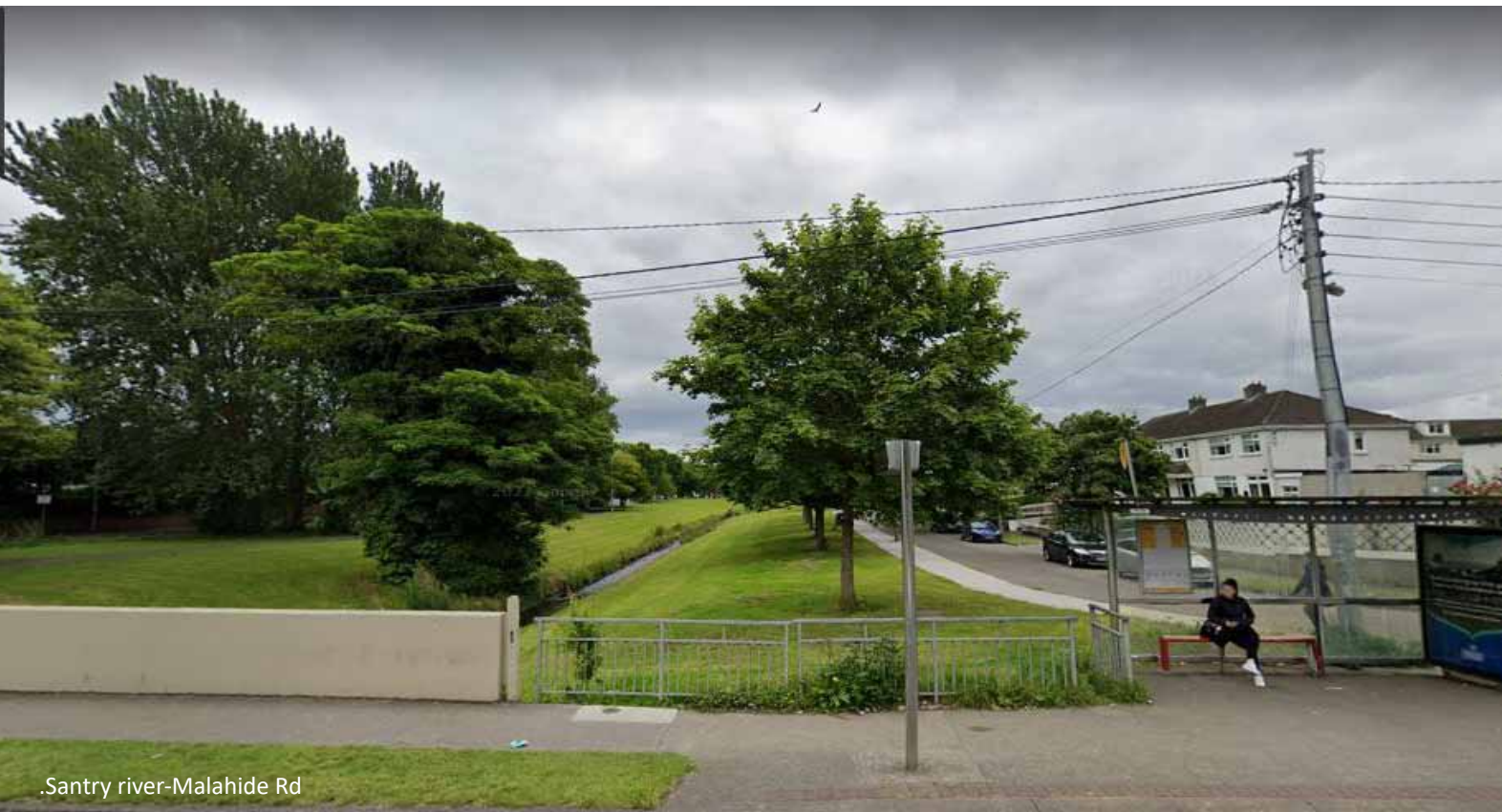
THEMES: INTEGRATING LOGISTIC/ INDUSTRIAL PARKS, IMPROVING SAFETY OF THE PARK, CONNECTING RESIDENTIAL AREAS TO THE RIVER PARK, IMPROVING FENCING AND BOUNDARIES, PARKING AREAS.

Existing objectives

- Link community activities like schools, hospitals, parks and sport areas to the River Park.
- Improve community safety and reduce dumping.
- Explore the potential to make ponds and river areas more biodiverse.
- Make the River Santry more visible at crossings and bridges.
- Create safe crossing at intersecting roads like the Malahide Road, Coolock Drive, Barryscourt Road and Clonshaugh Road.
- Remove unattractive fences and upgrade green areas for nature and amenity.

Opportunities

- The Stardust Memorial Park was home to a 12th century monastic site and a fort. How can this heritage be celebrated?
- Can the park become more biodiverse to add more colour and seasonal variation?
- How can the schools like Colaiste Dhulaigh use the River park to develop sustainable improvement projects; such as the rain water harvesting project, leaf composting project, sustainable planting projects and the pollinator project?
- How can the surrounding Logistics/ industrial Parks tie-in better to the River Park?
- How can the feeling of safety be improved, especially along stretches of industrial and logistic parks, so that users feel comfortable?
- Can neighbourhood amenities be added to the River park?
- Can a location for carnivals and amusements be created for events?



.Santry river-Malahide Rd



.Stardust park -West Entrance



.Adare park residentials



.View to Santry River-Stardust Park



.View to Santry river-Barryscourt Rd



MALAHIDE ROAD INDUSTRIAL PARK

GREENCASLE ROAD (RIVER IS FENCED OFF)

FENCING

LIGHT INDUSTRIAL USE

OSCAR TRAYNOR RD.○

MALAHIDE ROAD R107○

- ■ ■ Feasibility cycling route (study)
- Santry river
- Possible stopping points



- ■ ■ Feasibility cycling route (study)
- ■ ■ Santry river
- Possible stopping points



- - - Feasibility cycling route (study)
- - - Santry river
- Possible stopping points

INSPIRATION FOR POSSIBLE IDEAS



Community hubs ?



Learning and gathering ?



Meeting the river ?

New opportunities for play ?



SKETCH YOUR IDEAS AND GIVE US YOUR FEEDBACK

4. Clonshaugh Road to M50

4. CLONSHAUGH ROAD TO M50

THEMES: INTEGRATING LOGISTIC/ INDUSTRIAL PARKS, CONNECTING RESIDENTIAL AREAS, REMOVING FENCING AND IMPROVING ACCESS, CREATING ATTRACTIVE SPACES AND PLACES, IMPROVING THE UNDERPASS.

Existing objectives

- Create more attractive spaces where people feel welcome and safe.
- Improve the biodiversity of the River Park.
- Make the river an interesting place to visit
- Link residential and (light) industrial areas into the River park.
- Make the River Santry more visible at crossings and bridges
- Create safe crossing at intersecting roads like the Logistics Park entrance, Northside shopping centre.
- Remove unattractive fences and upgrade green areas for nature and amenity.
- Improve safety and reduce anti-social behaviour.

Opportunities

- How can the feeling of safety be improved, especially along stretches of industrial and logistic parks, so that users feel comfortable ?
- Can the park become more biodiverse to add more colour and seasonal variation?
- Can neighbourhood amenities be added to the River park?
- Can amenities for the logistics park attract users from this area into the park ?
- Can the underpass at the M50 be made safe and welcoming ?
- Can the parking area at the Northside Shopping centre be reconfigured to daylight the river ?
- Can the edges of the park, especially at Larch Hill and along the Oscar Traynor Road be designed to invite users into the park and stimulate movement along the south side of the park?
- Can fencing be removed to allow access to the river ?
- Can the River Park be made more attractive for the residents of Woodlawn?
- Can the M50 underpass be made a safe destination?



.View to Santry river-Coolock Lane Park



.Coolock Lane Park-Oscar Traynor Rd



.Woodlawn neighborhood



.Flyfit Northside



.Clipper Logistic



- - - Feasibility cycling route (study)
- - - Santry river
- Possible stopping points



- - - - Feasibility cycling route (study)
- - - - Santry river
- Possible stopping points

INSPIRATION FOR POSSIBLE IDEAS



Community Gardens ?



Outdoor events and activities ?



Natural play areas ?

Logistics park meet River Park ?



SKETCH YOUR IDEAS AND GIVE US YOUR FEEDBACK

SKETCH YOUR IDEAS AND GIVE US YOUR FEEDBACK

5. M50 to R108

5. M50 TO R108

THEMES: INTEGRATING WOODLAND AREAS INTO THE RIVER PARK, IMPROVING SAFETY, CONNECTING RESIDENTIAL AREAS, IMPROVING ACCESS, RE USING BUILDINGS, IMPROVING THE UNDERPASS.

Existing objectives

- Create a cycle route that is attractive and safe.*
- Improve the biodiversity of the River Park and strengthen the existing woodland.*
- Create an attractive, safe route with places to visit along Cedar View, Bridgefield apartments and the Old Ballymun Road.*
- Link residential and (light) logistical areas into the River park.*
- Link community activities like schools, nursing centres, and sport areas to the River Park.*
- Create safe crossing at intersecting roads like the Swords's Road and Temple Garden crossing.*
- Prepare a lighting plan that is environmentally friendly.*
- Upgrade woodland areas for nature and amenity and reduce the risk of anti-social behaviour.*

Opportunities

- Link existing amenities in Santry Park and Santry Lodge into the River Park?*
- Make the River Park more attractive for the residents of Woodlawn, Parklands and Oak districts?*
- Improve the feeling of safety, especially along stretches of woodland where planting encroaches on the cycle path and at underpasses?*
- Integrate the edges of the park along industrial/ logistical zones into the River Park?*
- Re-use old buildings along the Ballymun Road and elsewhere for new activities and amenities to activate the River Park ?*
- Make the River park more biodiverse and add colour and seasonal variation?*
- Add neighbourhood amenities to the River park where appropriate ?*
- Attract users of the logistics park into the River Park?*
- Climate adapt the River Santry within Santry Park ?*
- Make the underpass at the Temple gardens more safe and welcoming?*
- Improve the pinch point to the east of Sword's Road?*



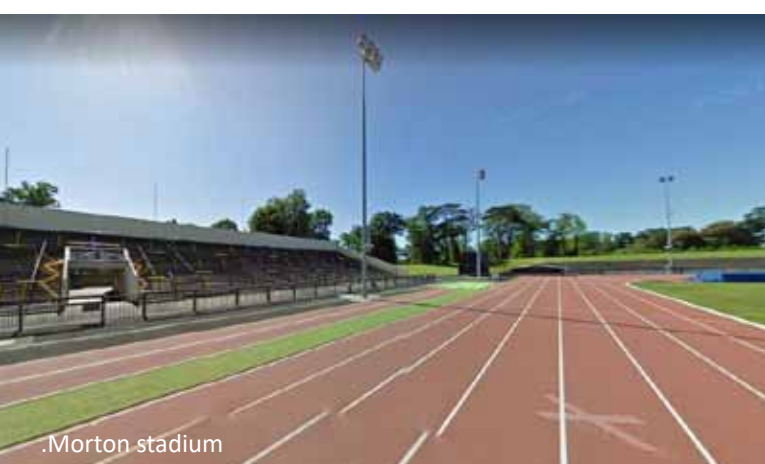
.Santry Park Lake - Northwood Ave



.Crown Plaza- Northwood Ave



.Northwood Residential



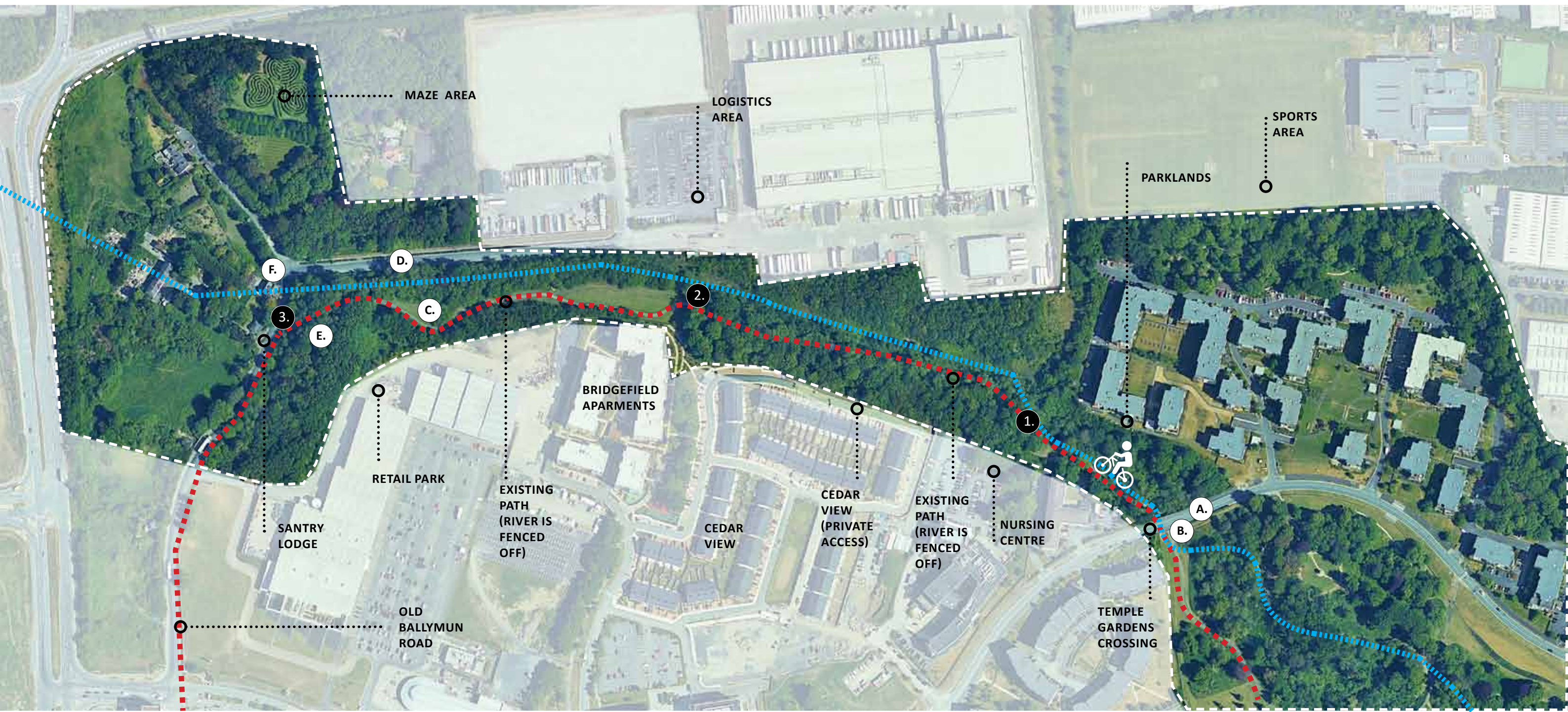
.Morton stadium



.Trinity College Sport Grounds



- - - Feasibility cycling route (study)
- - - Santry river
- Possible stopping points



- - - Feasibility cycling route (study)
- Santry river
- Possible stopping points

INSPIRATION FOR POSSIBLE IDEAS



Interesting routes ?



Adventure and play ?



A woodland park?

A safe neighbourhood?



SKETCH YOUR IDEAS AND GIVE US YOUR FEEDBACK

SKETCH YOUR IDEAS AND GIVE US YOUR FEEDBACK

6. R108 to Sillogue

6. R108 TO SILLOGE

THEMES: IMPROVING ACCESS, IMPROVE VISIBILITY OF THE RIVER, WATER STORAGE, AMENITY DEVELOPMENT, RESTRICTIONS TO ECOLOGY (AIRPORT AND LARGE OPEN AREAS OF WATER), DEVELOPMENT OF LOGISTICS PARKS

Existing objectives

- Create a river route that is attractive and safe.*
- Improve the biodiversity of the River Park without conflicting with restrictions.*
- Create an attractive, safe route that ties in with existing amenities such as the golf course, plane spotting.*
- Link residential and (light) logistical areas into the River park.*
- Link community activities like schools, nursing centres, and sports areas to the River Park.*
- Create a safe crossing at intersecting roads like the M50.*
- Prepare a lighting plan that is environmentally friendly.*

Opportunities

- Link existing amenities like the golf course to the River Park?*
- Improve the feeling of safety along cycle or pedestrian routes, especially along stretches of hedgerows where planting encroaches?*
- Integrate the edges of the park along industrial/ logistical zones into the River Park?*
- Make the River Park more biodiverse and add colour and seasonal variation?*

- Make the River park more biodiverse and add colour and seasonal variation?*
- Add neighbourhood amenities to the River park where appropriate ?*
- Attract users of the logistics park into the River Park?*
- Climate adapt the River Santry within Santry Park ?*
- Make the underpass at the Temple gardens more safe and welcoming?*
- Improve the pinch point to the east of Sword's Road?*



R108 to golf course



Silloge Golf club



Dublin Airport



.M50 to Santry River



Plane spotters at Dublin Airport



- ▬▬▬ Feasibility cycling route (study)
- ▬▬▬ Santry river
- Possible stopping points



- ■ ■ Feasibility cycling route (study)
- Santry river
- Possible stopping points

SKETCH YOUR IDEAS AND GIVE US YOUR FEEDBACK

SKETCH YOUR IDEAS AND GIVE US YOUR FEEDBACK
