

Part VIII Application

Wholesale Fruit and Vegetable Market

Mary's Lane

Dublin 7

Photographs



Fig 26 Main entrance to Fruit and vegetable Market from Mary's Lane



Fig 27 Arcaded façade to St Michan's Street – *the general style of treatment may be classed as Romanesque*



Fig 28

'The elevation in Mary's Lane shows a central gateway, flanked with detached Corinthian lime columns, of line-stone (sic) from Ballinsloe quarry, having side entrances for pedestrians.'

The Irish Builder



Fig 29 'The statuary over the main entrance is by Messr. Harrison and Son, Great Brunswick Obedia civium urbis felicitate



Fig 30 & 31 'At the intersections of the latter are carvings typical of the trades transacted inside. The tympanums over arches are faced with terracotta diaper in squares of 18 inches, which is treated in a very bold manner with conventional foliage springing from a central boss, each boss being connected with the adjoining one by means of a bold bead having a V-shaped groove on its face, thus forming a continuous pattern over the entire surface.'



Fig 32 'On either side of these entrances are six granite piers, standing on a chamfered base and finishing on top with a moulded cap, from which spring semi-circular arches of moulded red and yellow brick, finishing with a hollow chamfered hood-moulding.'

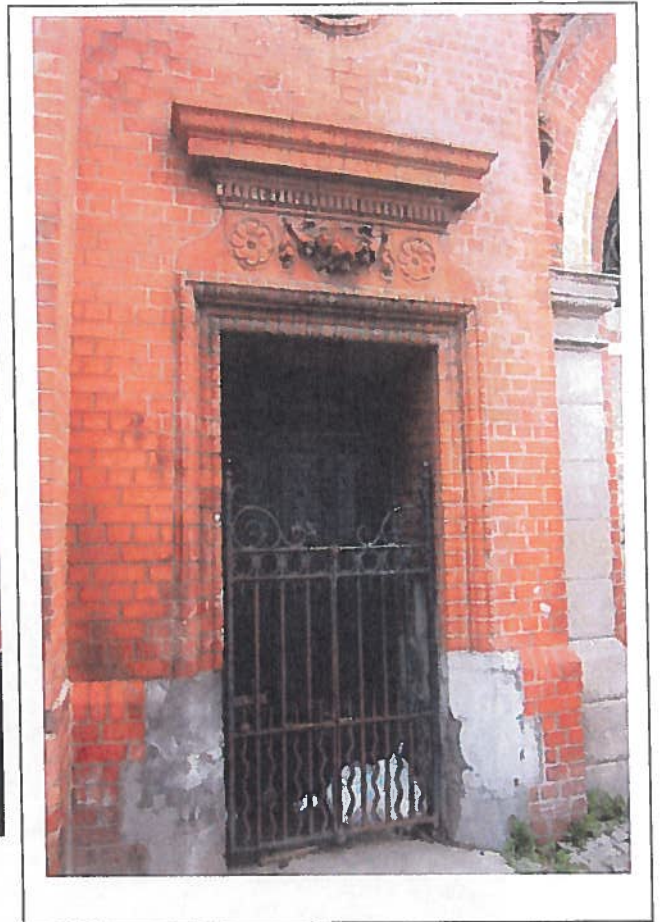


Fig 33, 34St Michan's Street entrance

The side entrances have moulded brick jambs and heads, finishing with terracotta frieze and cornice. Over these doors are placed elliptical openings filled with hammered ironwork.



Fig 35 Six openings are filled with hammered iron grilles and a like number filled with red and yellow brick.

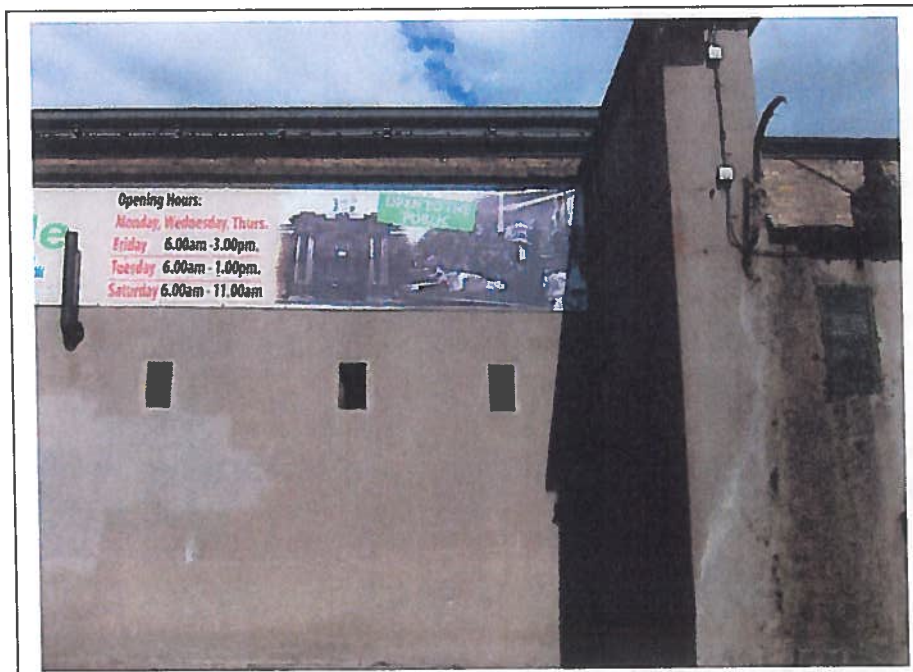
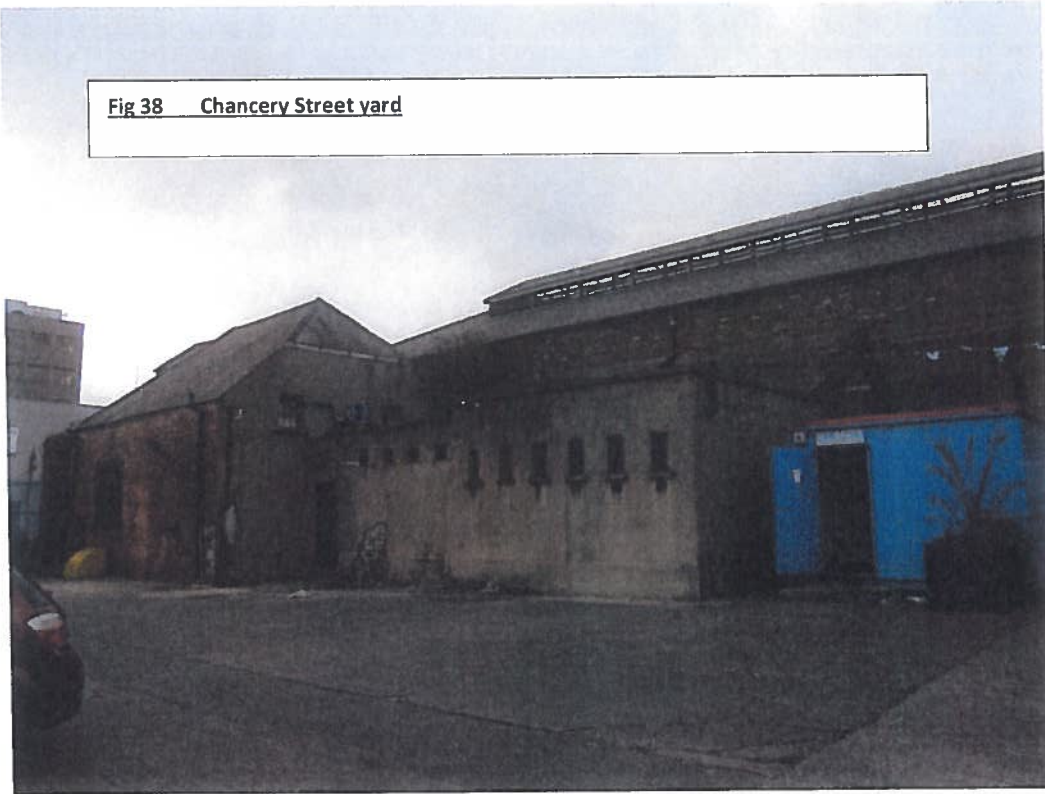


Fig 36 'The gateways are ornamented at each side with pilasters in the Doric style, standing on a pedestal and surmounted with entablature and pediment.'



Fig 37 Lane from Arran Street

Fig 38 Chancery Street yard



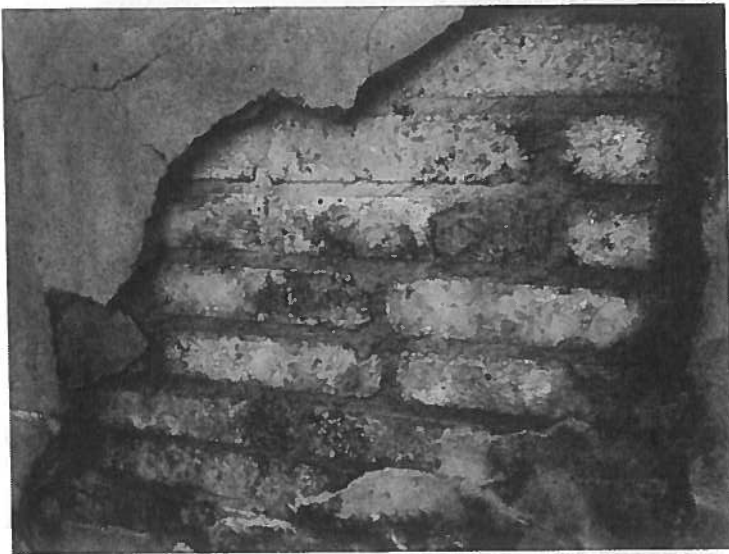
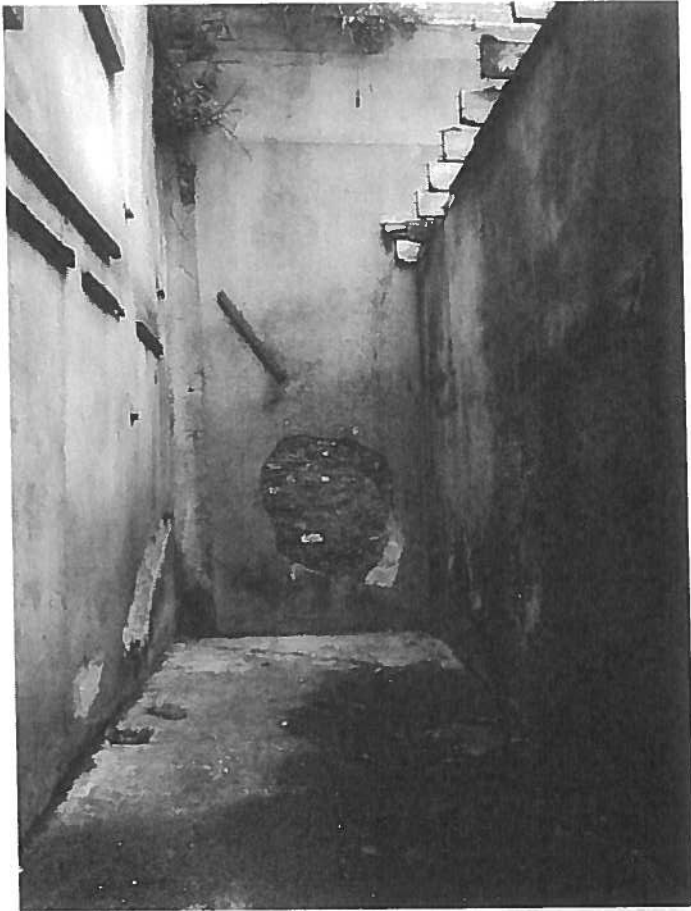
Figs 39, 40 & 41 Toilet buildings and porta cabins in Chancery Street yard



Fig 40



Fig 41



Figs 42, 43 Derelict structures in Chancery Street yard



Fig 44 later interventions



Figs 45 Later entrance to market building from Chancery Street yard



Figs 46 Derelict toilets viewed from roof



Figs 47 Arran Street entrance to Daisy Market



Fig 48 Daisy Market



Fig 49 Lean to structures and entrance to markets from Daisy Market



Fig 50 Existing car park with St Michan's House in background.



Fig 51 Internal brick arcade



Fig 52 The interior festooned with obsolete electrical cables

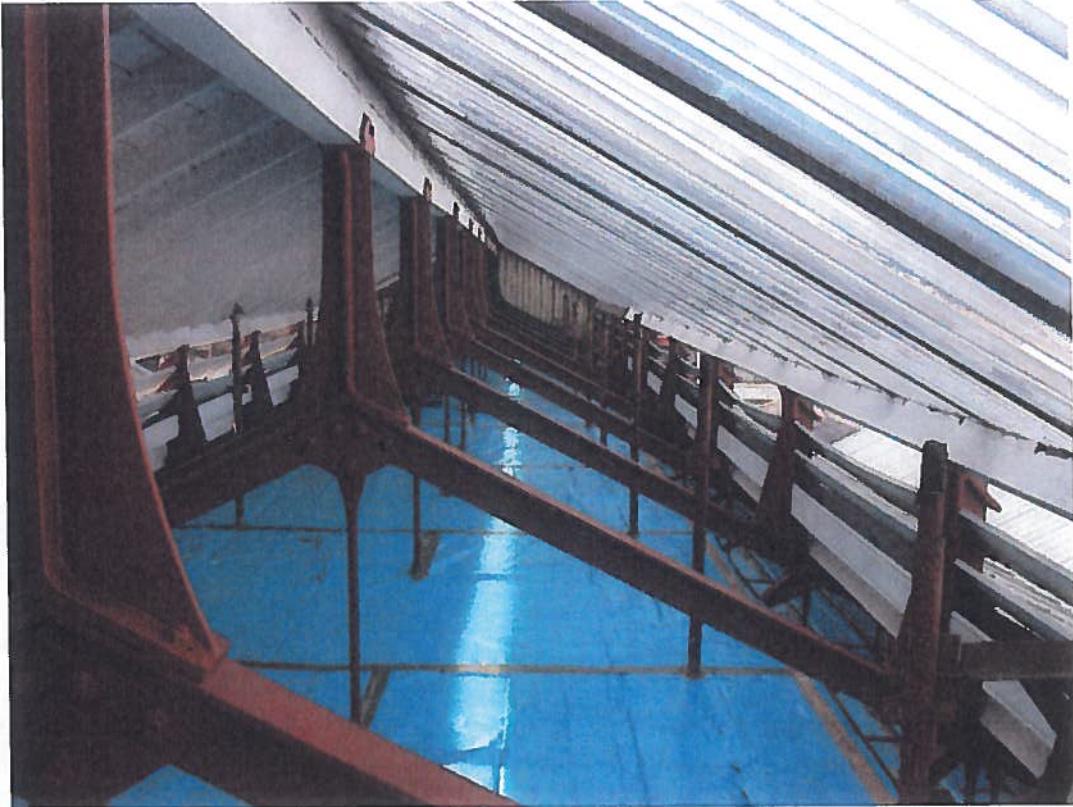


Fig 53 The central portion of roofs, for a width of 15', is occupied by a lantern, glazed on top; while the sides which stand 2'9" over roof line are filled in with zinc louvres.



Fig 54 'The internal elevation has been designed with a view to avoid projections as much as possible and surface decoration by means of judiciously applied masses of varied coloured local bricks, has been relied on for effect. A dado of glazed brick, 5 ft high, runs around the building and the plain surface is relieved by banks of



Fig 54 Circulation area

gives access to rooms in lean-to structure.



Fig 55 Ceramic urinals in men's toilets

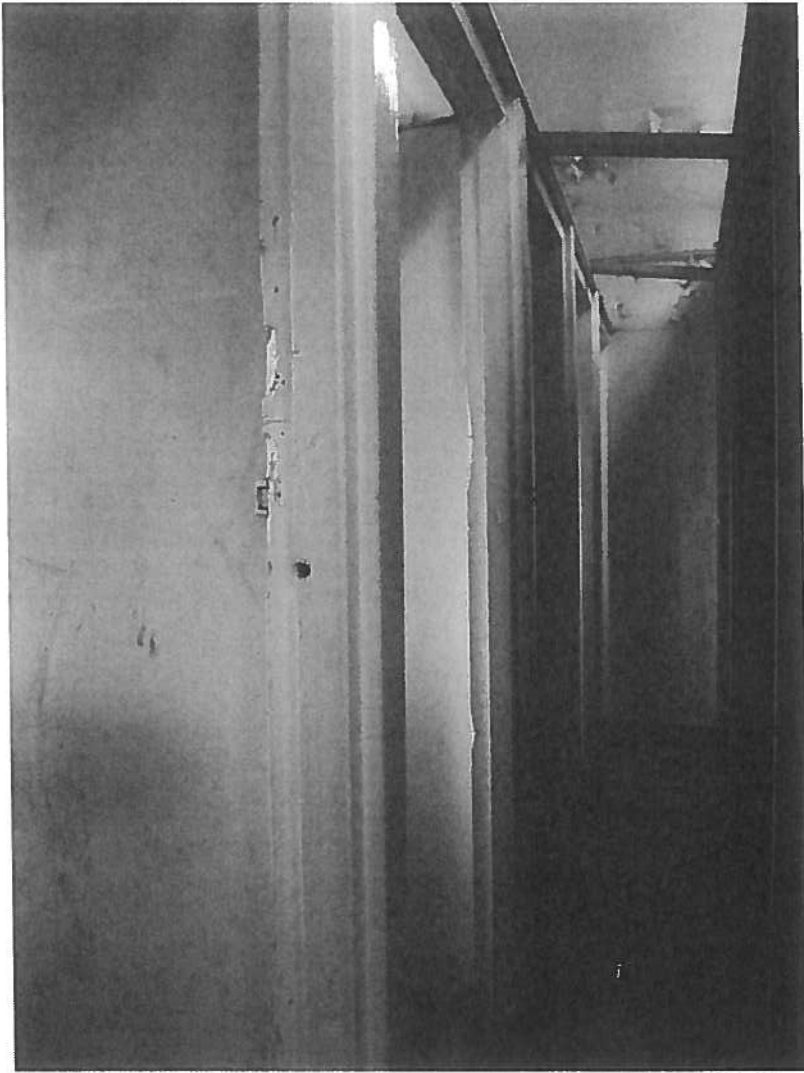


Fig 56 Men's toilets, no longer in use.

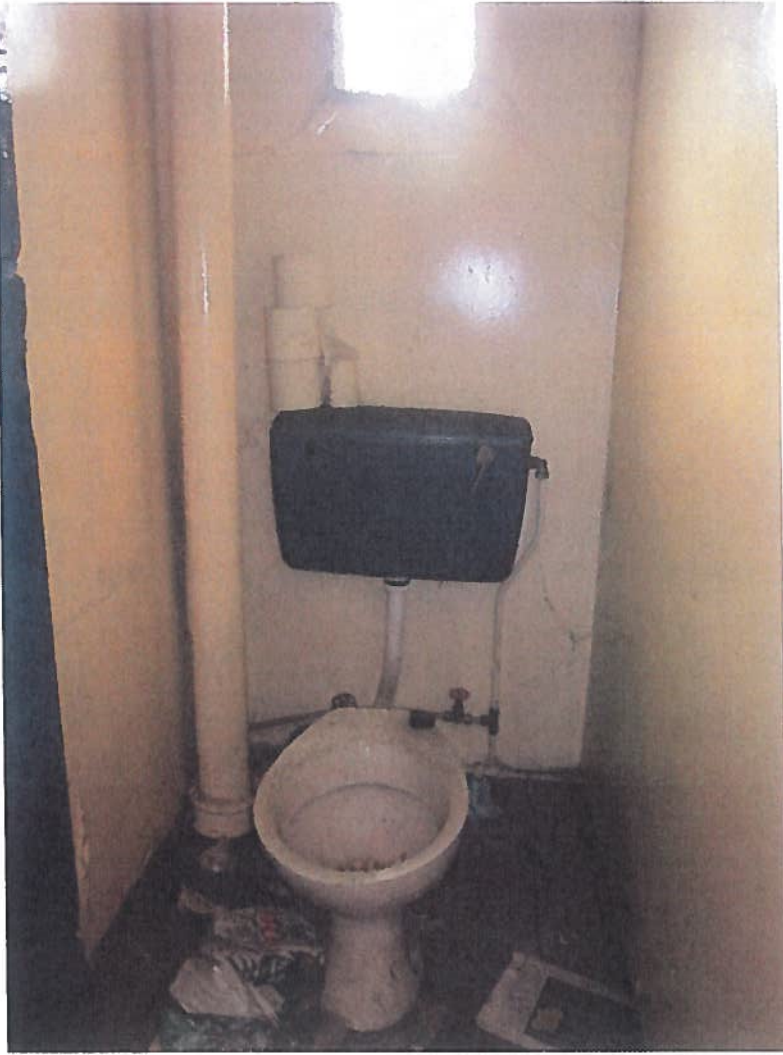


Fig 57

Fig 59 3D model of Wholesale fruit and vegetable markets



Fig 60 TRADERS BANKS EAST SIDE



Bank 1



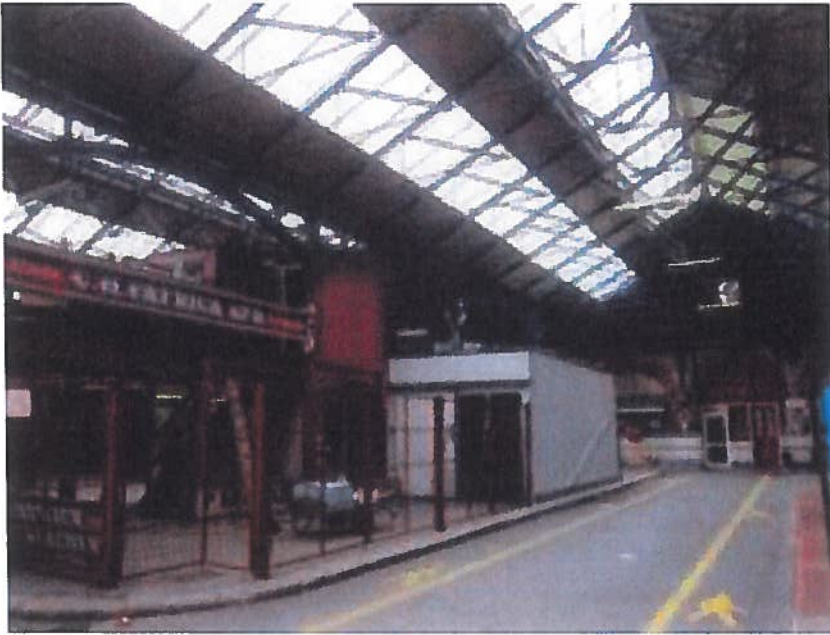
Bank 2



Bank 3



Bank 4



Bank 5



Bank 6



Bank 7



Bank 8



Bank 9

Bank10



Bank 11



Bank 12



Bank 13



Bank 14

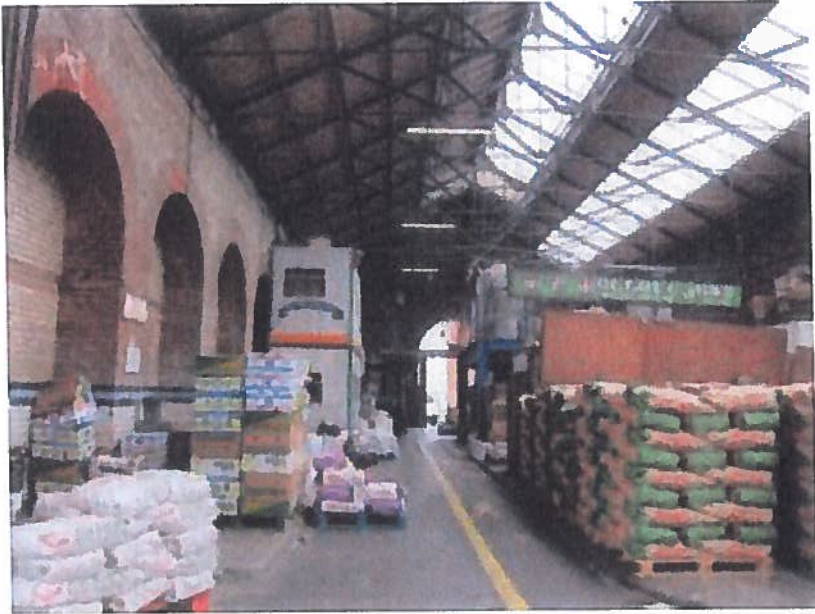


Bank 15

Bank 16



Fig 61 TRADERS BANKS WEST SIDE



Bank 17



Bank 18



Bank 19



Bank 20



Bank 21



Bank 22



Bank 23



Bank 24



Bank 25



Bank 26



Bank 27



Bank 28



Bank 29

Bank 30



Bank 31

Bank 32





Fig 62 Eclectic sign painting of individual traders contributes to market character



Figs 63,64



Fig 66 earlier repainting



Fig 67 The original sheeted internal doors have survived generally. The tall oak gates are replacement with the original wrought iron reinstated.

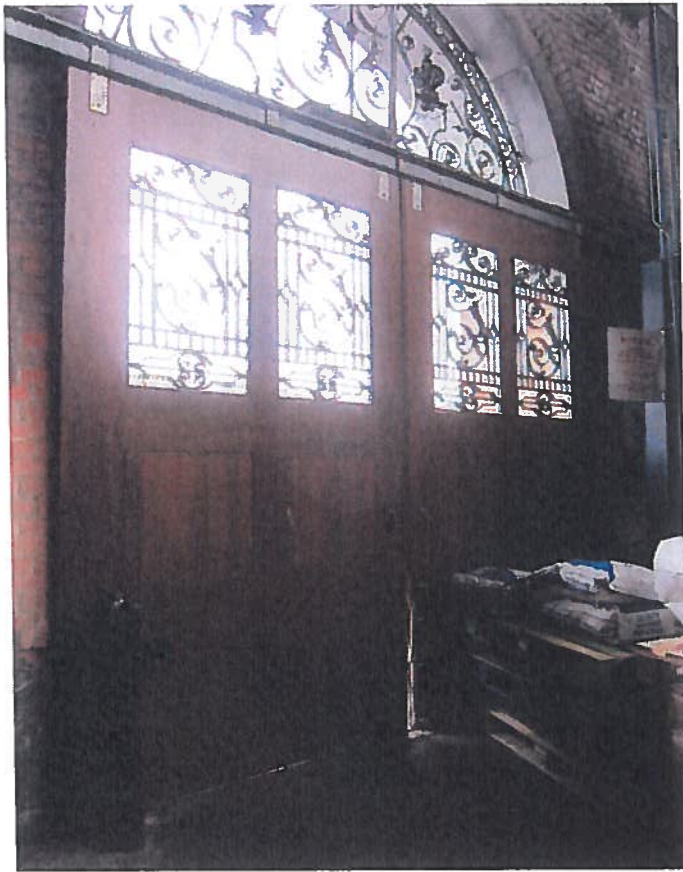


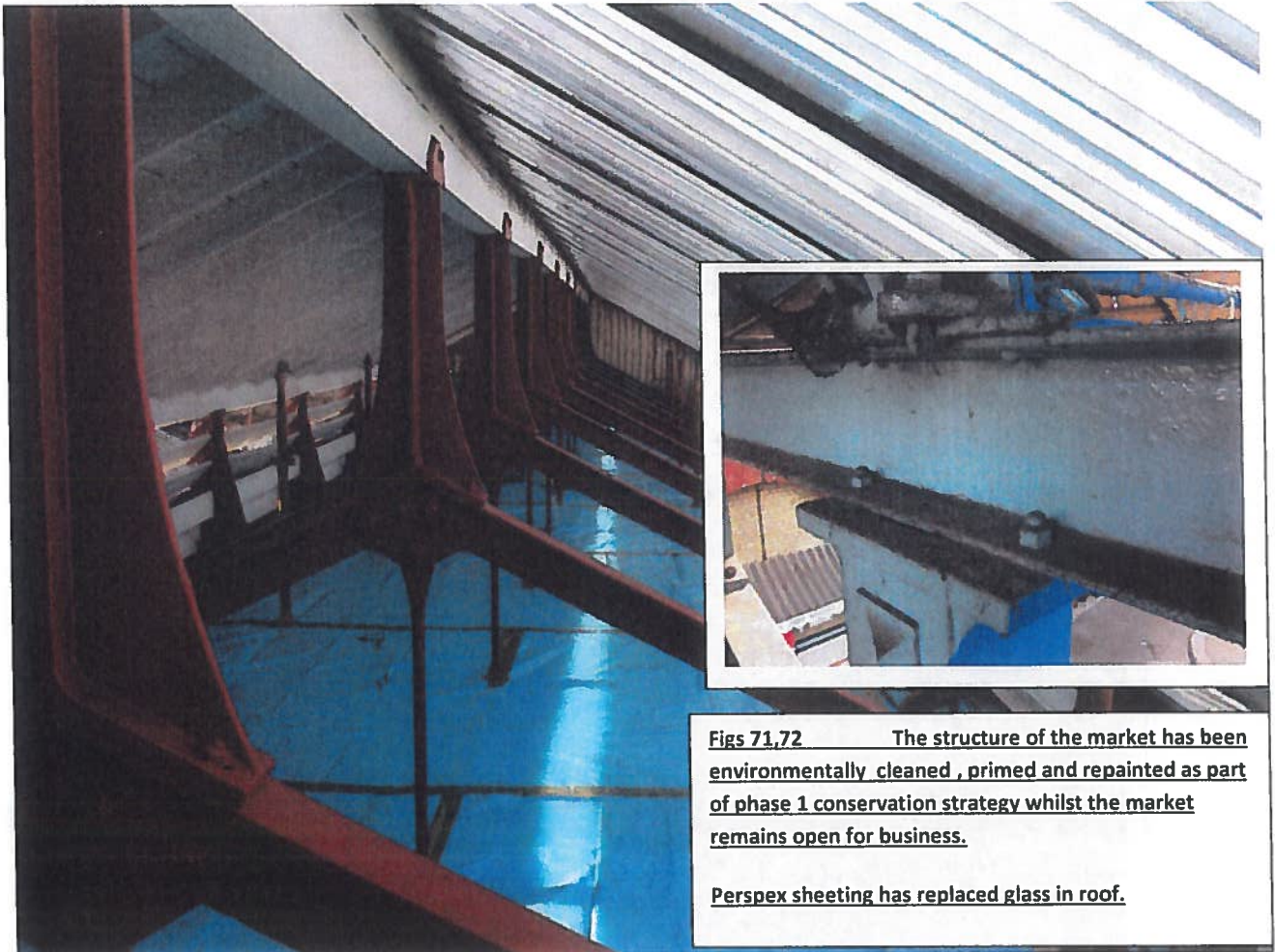
Fig 68. Replacement oak doors



Fig 69 Wholesale traders dealing in bulk



Fig 70



Figs 71,72 The structure of the market has been environmentally cleaned , primed and repainted as part of phase 1 conservation strategy whilst the market remains open for business.

Perspex sheeting has replaced glass in roof.



Fig 73 Ties bolted to roof trusses

Fig 74 Roof trusses and underside of cast iron gutter

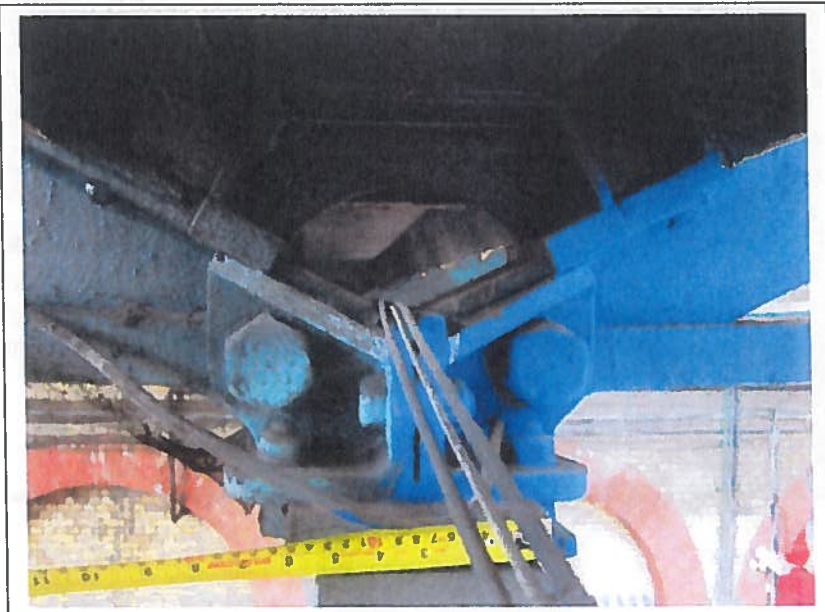




Fig 75 Rainwater pipe from roof valley positioned alongside column



Fig 76 CCTV fittings mounted on cast iron columns

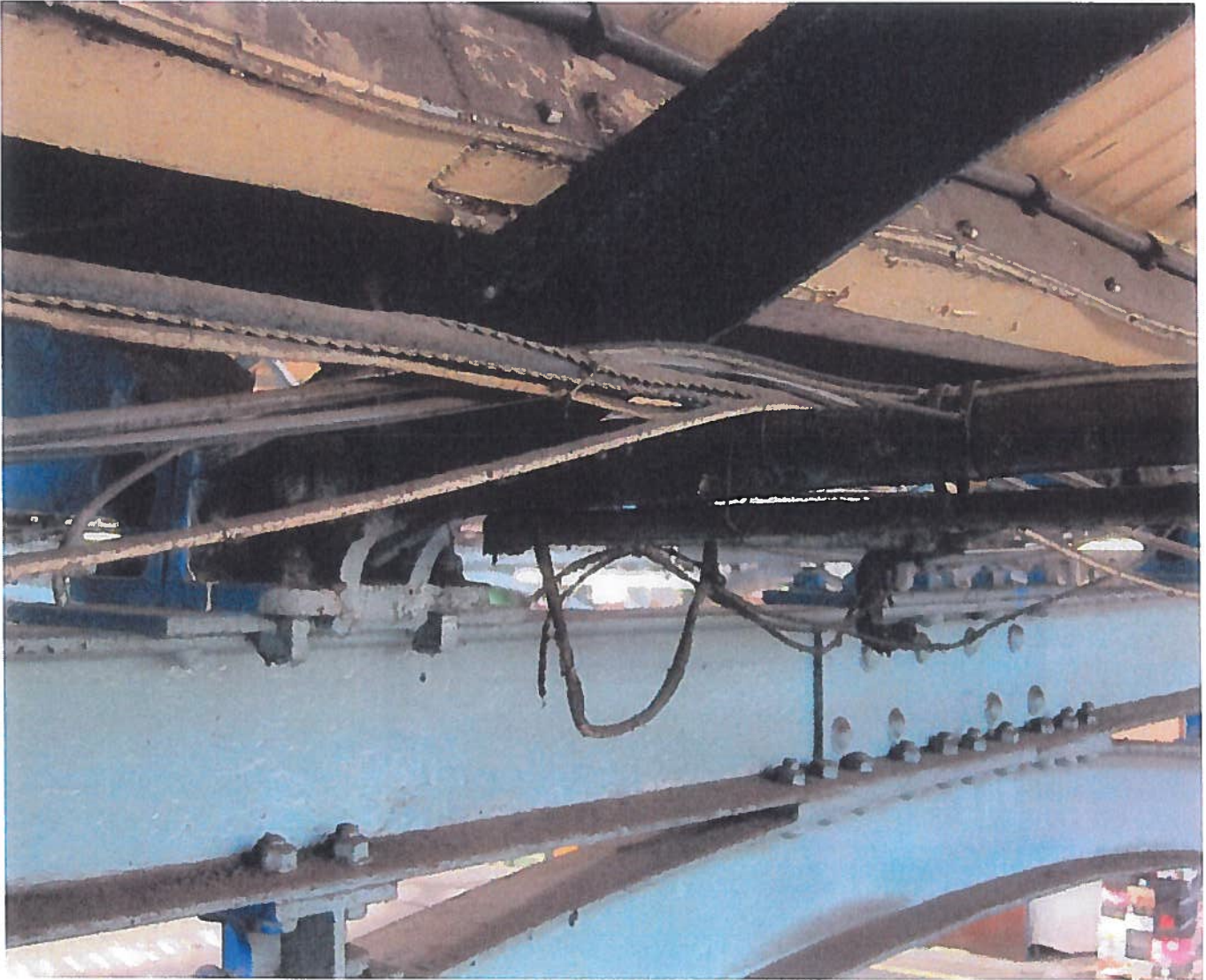


Fig 77 'Springing from the top are a series of curved beams, which support the ends of principal rafters carrying the roof. The principals have a clear span of 41' and are constructed of wrought iron'

obsolete wiring, carried on steel girders, stripped out as part of phase 1 conservation strategy



Figs 78 & 79 Roof slates slipping and flashings require

ongoing maintenance



Fig 80 Parapet gutters on main elevations

Fig 81 front parapet



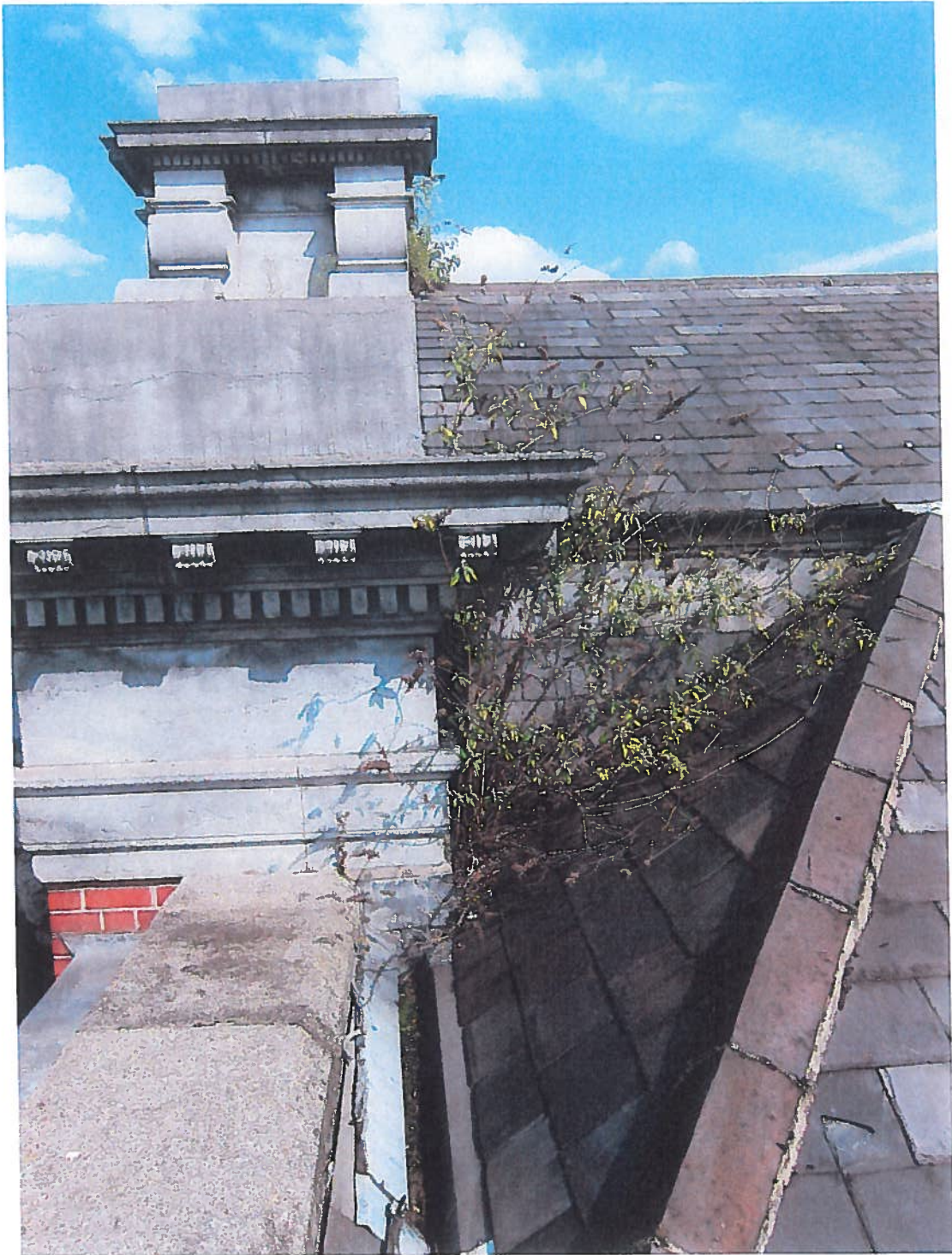


Fig 82 Vegetation rooting in joints

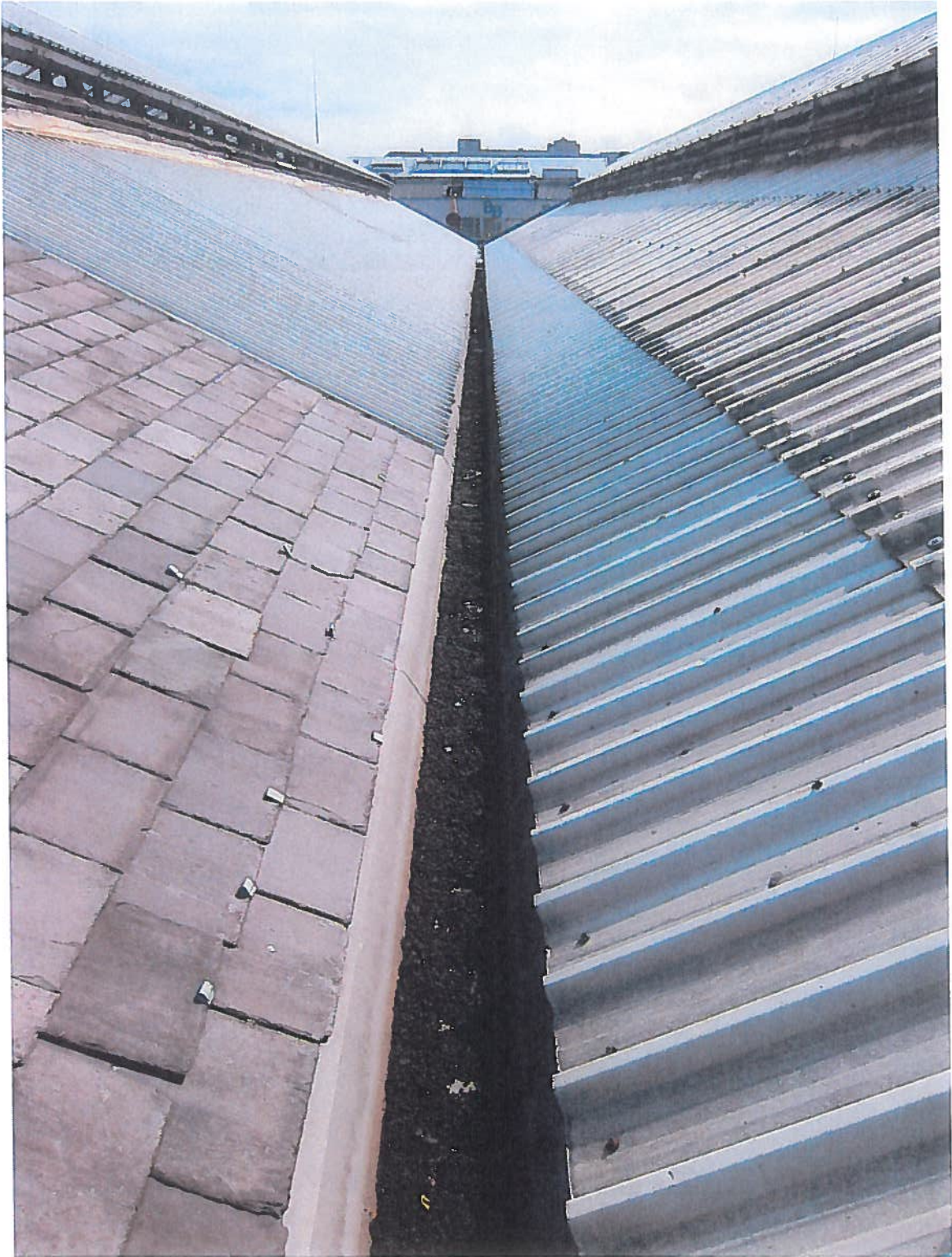
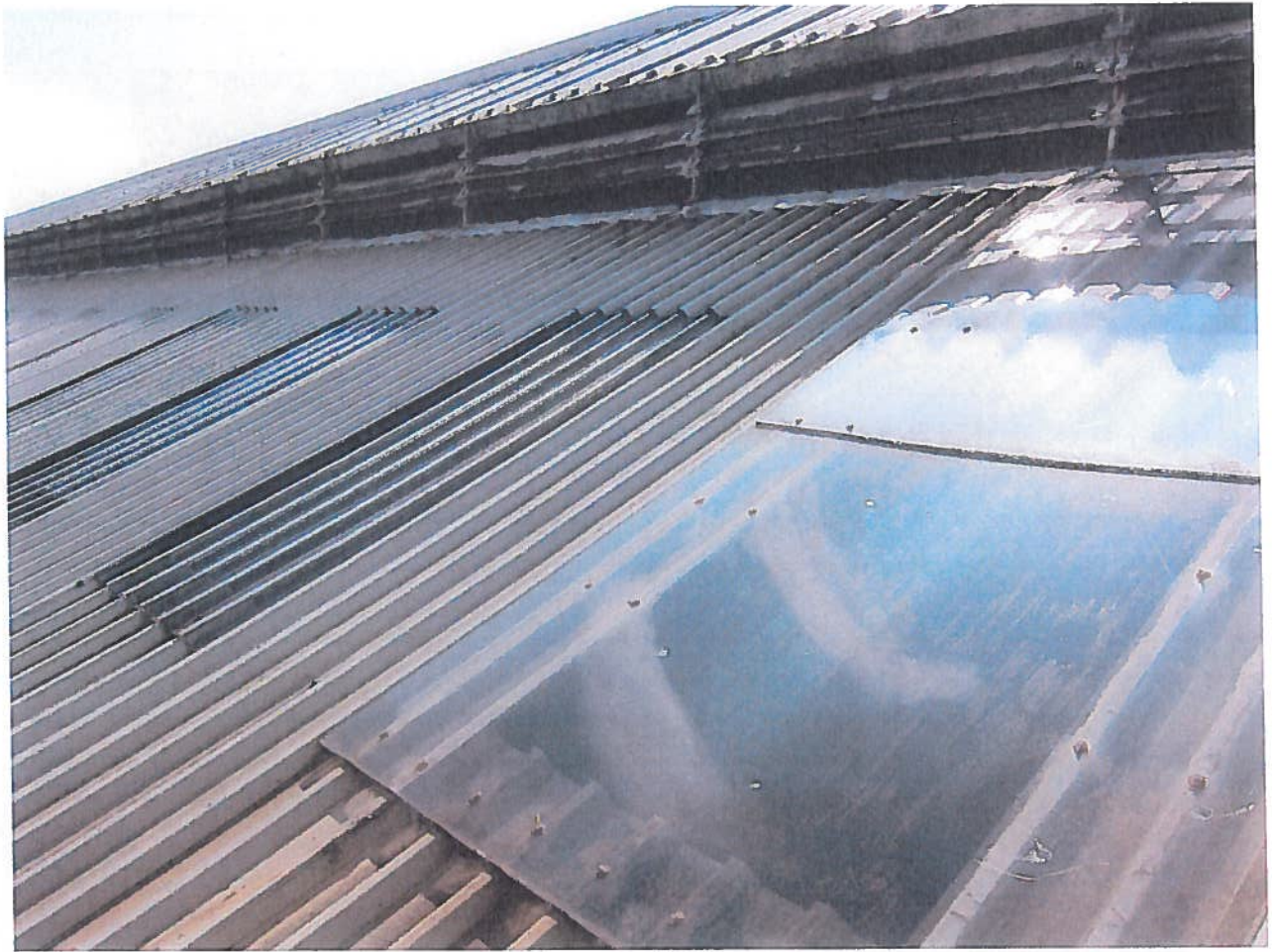


Fig 83 Typical valley gutter



Fig 84 Louvres of lantern providing ventilation



Figs 85 Perspex and corrugated metal from earlier renovations



Fig 86 Louvred lantern

Fig 87 Blocked up rainwater outlets





Fig 88 Roof of adjoining shop



Figs 89 moulded cornice of main facades leaded
