

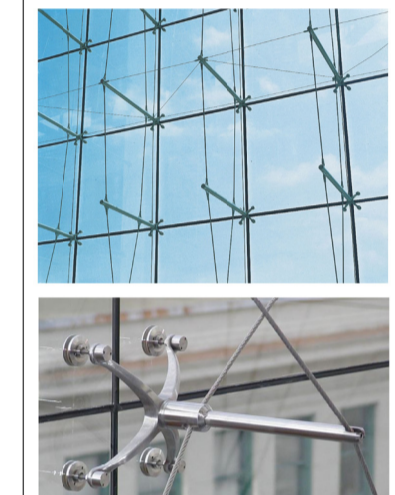
NEW CONSTRUCTION - TOILET BLOCK



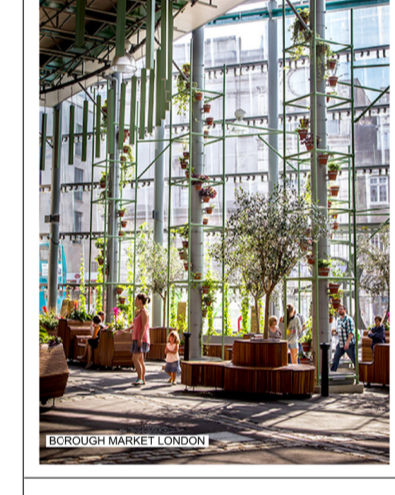
CHANCERY STREET AND DAVY MARKET: HAND SURFACE COURSE, GENERAL FALL NOT LESS THAN 1:80. INTERIOR FINISHES TO BE IN ACCORDANCE WITH THE DESIGN AND DETAIL. CONSTRUCTION OF UNIFORM CONCRETE, MIN 100MM SUB-BASE, WOODWORK WILL COMPLY.



PROVISION FOR WATER SUPPLY AND ELECTRICAL SUPPLY



POLES FOR BANNERS



TEMPLE GLAZED PANELS: HORIZONTAL SPAN OF 11.8M AND HEIGHT 8.8M. FREE HANGING ALUMINIUM SUPPORTS ON STAINLESS STEEL COLUMNS. STAINLESS STEEL CLAMPS AND IS STABILIZED ONLY BY ITS OWN WEIGHT. STAINLESS STEEL CLAMPS ARE SUPPORTED BY CAST STEEL BEAMS. CLAMPS TO BE DESIGNED TO ENGINEERS DETAIL.



GLASS SANITY: 210 TAPERED GLASS PANELS EACH 1.8M BY 1.87 M IN SIZE. FRAME CONSTRUCTION: GALVALUM. GLASS TO BE SUPPLIED FROM A SET OF STAINLESS STEEL CLAMPS WITH CUSTOMER MADE STAINLESS STEEL CLAMPS AND IS STABILIZED ONLY BY ITS OWN WEIGHT. STAINLESS STEEL CLAMPS ARE SUPPORTED BY CAST STEEL BEAMS. CLAMPS TO BE DESIGNED TO ENGINEERS DETAIL.



POLES FOR BANNERS

EXTERNAL WALLS:
100MM CAVITY WALL CONSTRUCTION WITH HEAVY DUTY STAINLESS STEEL WALL. THE 175mm IS TO BE CONSTRUCTED TO ENGINEERS DETAIL. VERTICALLY AND HORIZONTALLY STAINLESS STEEL WALLS WITH 100MM CAVITY WITH 100MM INSULATION TO BE CONSTRUCTED TO ENGINEERS DETAIL. A MINIMUM VOLUME OF 27MM DIA. GALVALUM BLOCK COVER LEAF, PLASTERED, AND PAINTED INTERNALLY. THE LEAF IS TO BE FIXED WITH GALVALUM CLIPS TO THE SUB-BASE FLOOR LEVEL.

INTERNAL WALLS:
NEW PLASTERED AND PAINTED 100MM CONCRETE BLOCKWORK. INTERNAL WALLS ON NO. 10 FOUNDATION TO ENGINEERS DETAIL. FIT WITH 8mm WOOD SKIRTING IN ALL AREAS. FINISHES TO BE IN ACCORDANCE WITH THE DESIGN AND DETAIL. INSTRUCTIONS REGARDING THE ORIGINAL MARKET CONSTRUCTION LINE WORK SHALL BE CONSIDERED AS A REFERENCE. FINISHES TO BE IN ACCORDANCE WITH THE DESIGN AND DETAIL. FINISHES TO BE IN ACCORDANCE WITH THE DESIGN AND DETAIL.

FLOOR:
100MM CONCRETE SCHEDULE LAKE TO FALL TO STAINLESS STEEL FLOOR GALLEYS FOR WAREHOUSES DOWN CONNECTED TO DRAINAGE AND DETAIL.

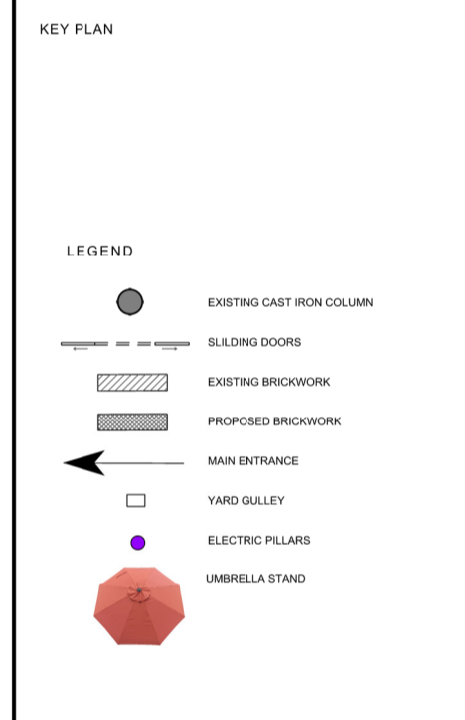
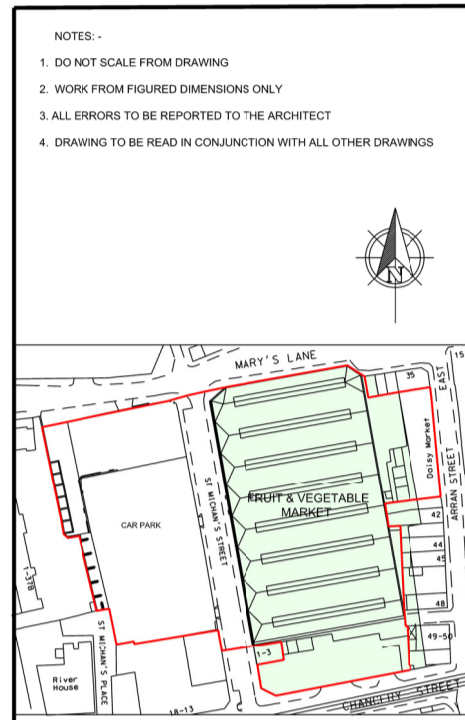
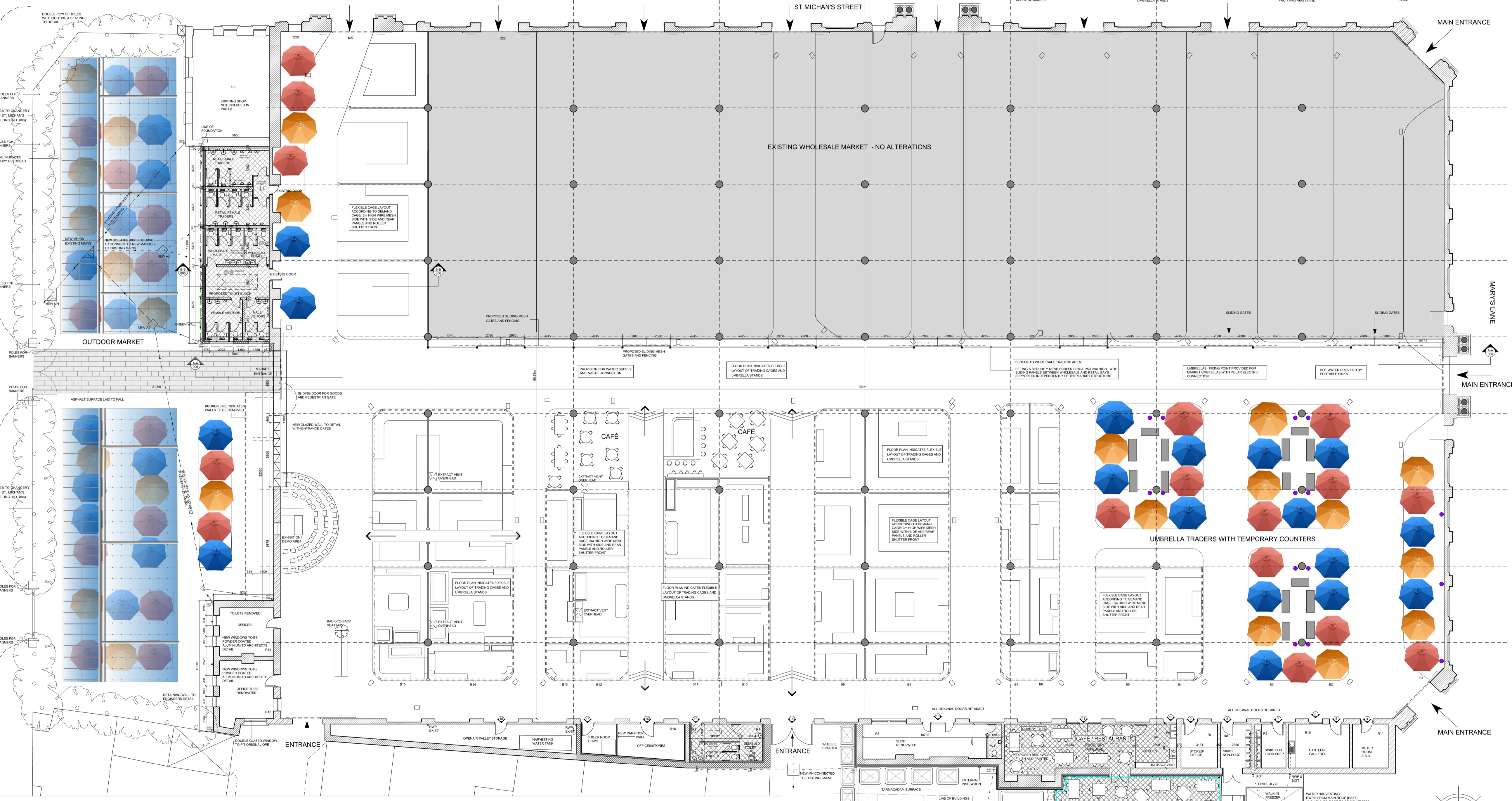
FLAT ROOF:
SELECTED 100MM RIGID/FOAM FLOOR INSULATION. THERMAL CONDUCTIVITY SHALL NOT EXCEED 0.025 W/M.K. PERMITTED PERMITS REFLECT SUPER INSULATION. PROTECT MEMBRANE WITH 100MM POLYURETHANE SAND FILL. FINISHES TO BE IN ACCORDANCE WITH THE DESIGN AND DETAIL. FINISHES TO BE IN ACCORDANCE WITH THE DESIGN AND DETAIL.

ROOFLIGHTS:
GLASS ROOFLIGHTS TO BE CONSTRUCTED TO ENGINEERS DETAIL. GLASS TO BE SUPPLIED FROM A SET OF STAINLESS STEEL CLAMPS WITH CUSTOMER MADE STAINLESS STEEL CLAMPS AND IS STABILIZED ONLY BY ITS OWN WEIGHT. STAINLESS STEEL CLAMPS ARE SUPPORTED BY CAST STEEL BEAMS. CLAMPS TO BE DESIGNED TO ENGINEERS DETAIL.

TOILET DOORS:
TOILET DOORS TO BE NORMAL 40MM THICK FLUSH DOORS WITH LAMINATED GLASS. FINISHES TO BE IN ACCORDANCE WITH THE DESIGN AND DETAIL. FINISHES TO BE IN ACCORDANCE WITH THE DESIGN AND DETAIL.

LIGHT FITTINGS:
BLUE LED LIGHTS TO BE INSTALLED IN ALL TOILET AREAS TO DETECT BODILY FLUIDS. LIGHT FITTINGS, BULBS, AND GRATES TO BE PROVIDED WITH CONTROLS. MECHANICAL EXTRACT VENTILATION THROUGH A MESH CONTROLLED DOUBLE BREAST IN ENVIRONMENT CONNECTED TO THE EXISTING LOCAL AUTHORITY SYSTEM.

VENTILATION:
VENTILATION REQUIREMENTS IN ACCORDANCE WITH BUILDING REGULATIONS TO TOILET TO BE PROVIDED WITH CONTROLS. MECHANICAL EXTRACT VENTILATION THROUGH A MESH CONTROLLED DOUBLE BREAST IN ENVIRONMENT CONNECTED TO THE EXISTING LOCAL AUTHORITY SYSTEM.



Dublin City Council
Comhairle Cathrach Bhaile Atha Cliath
Planning, Property, Enterprise & Economic Development Department
Project File: DUBLIN CITY COUNCIL WHOLESALE FRUIT & VEGETABLE MARKETS PART 1 APPLICATION
Date: SEPTEMBER 2014
C.D. By: P.B. & C.S.
Project No: 000
Drawing No: 1:100

Proposed Plan for New Retail Markets
Scale 1:100