

LANDSCAPE METHOD STATEMENT

Nursery stock

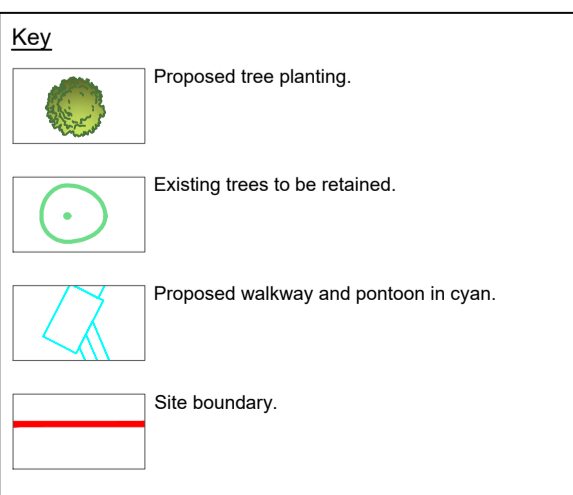
- All plants will be selected in accordance with BS3936:1992 Specification for nursery stock, and Horticultural Trades Association (HTA) National Plant specification guidance and trees selected in accordance with BS8545:2014 Trees: from nursery to independence in the landscape.
- All plants shall be clearly labeled with the botanical name of the plant; the suppliers name and other information.
- All plant species must be inspected upon delivery to the site, refer to BS8545:2014 for visual assessment of poor health in plants. Where significant disease or disorders are identified, the plant must be rejected and replaced by the nursery.
- Bare rooted plants will have protective wrapping removed and will be firmly heeled into a prepared trench and covered with topsoil.

Planting

- Planting will be carried out in the next available planting season. This usually runs from October to March, but is dependent on weather conditions. Container grown plants can be planted outside of this time providing adequate aftercare is provided.
- A square pit for each plant will be excavated. This must be twice the width and to the same depth of the rooting system being planted.
- The plants will be carefully placed into the hole with all roots spread out and any damaged roots pruned back to sound growth.
- A depth of 75-100mm of well composted wood chip mulch will be applied for the entire width of the pit around the base of each plant to form a continuous line of mulch along new planting areas.
- Suitable supporting systems will be installed on all new trees planted.
- All tree ties and stakes are to be removed within 2 years of planting.

Planting Schedule

Trees	Plant Name	Size	Qty.
Alnus glutinosa	6-8cm (Girth)	5	
Betula pubescens	6-8cm (Girth)	7	
Salix alba	6-8cm (Girth)	3	
Salix fragilis	6-8cm (Girth)	2	
Salix viminalis	60-90cm (Height)	10	
	TOTAL	27	



Scale: 0 5m 10m 15m

Client: **Dublin City Council**

Project: **Islandbridge, Dublin 8**

Title: **Tree Planting Plan**

Date: Mar 2022 | Scale: 1:250 @ A2 | Status: Planning

Drawn by: CMcC | Dwg ref: 220123-P-13 | Rev: A

Checked by: CMcC

This drawing is the copyright of Charles McCorkell Arboricultural Consultancy has been produced for the client and project as stated above. The drawing may not be reproduced or amended, except by the written permission of Charles McCorkell Arboricultural Consultancy. No liability will be accepted for any amendments made by other persons.

CHARLES MCCORKELL
ARBORICULTURAL CONSULTANCY

T: 085 843 7015 / E: info@cmarbor.com / W: www.cmarbor.com