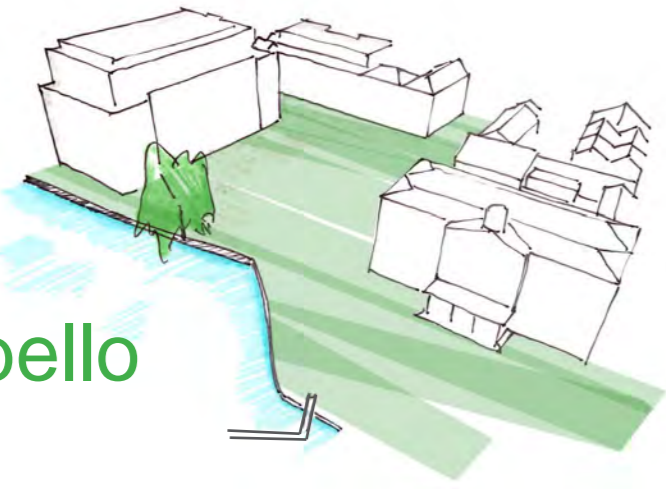


**Portobello**  
Harbour



Previous Consultation - Key Feedback

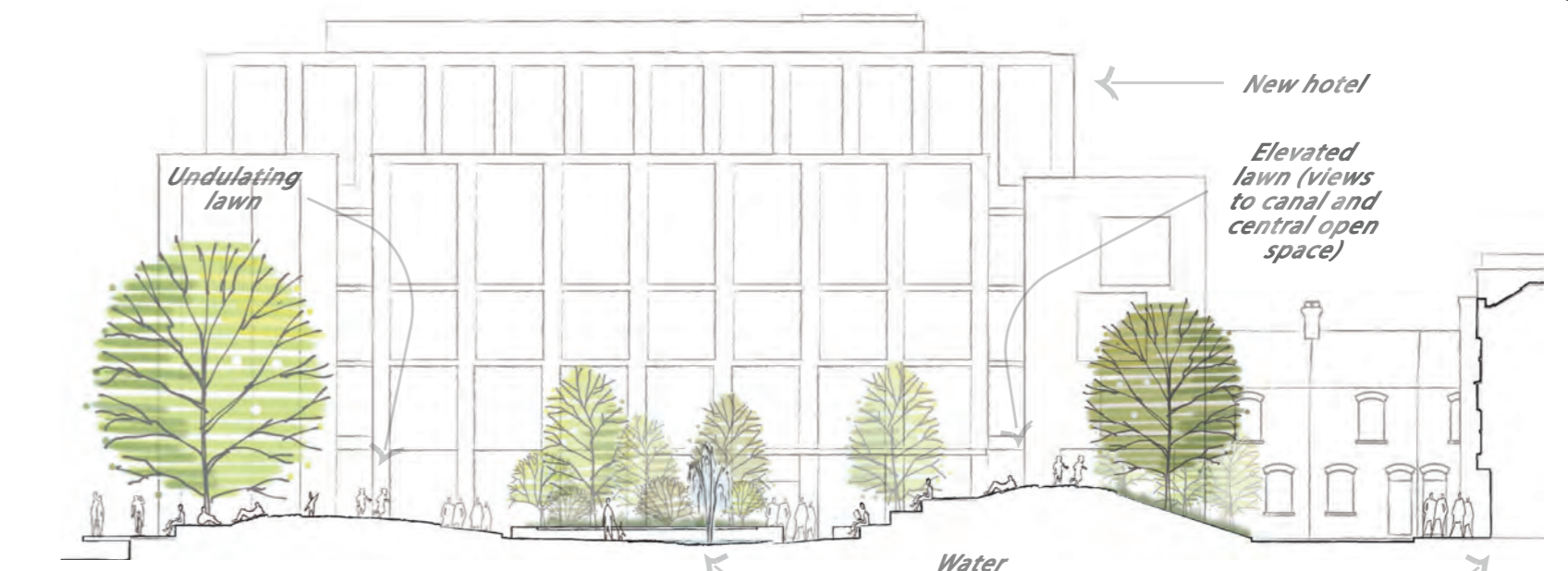
- Extend project area eastward
- Preference for Sketch Plan 2
- Softer and more biodiverse space
- Accommodate Skateboarding
- Address pedestrian and cycle conflicts
- Flexible hard landscape area for events
- Hotel - not to be dominant



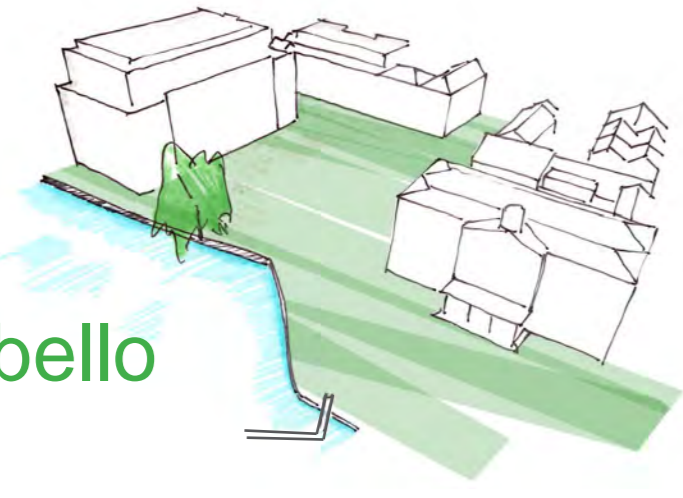
**Sketch Plan 1**



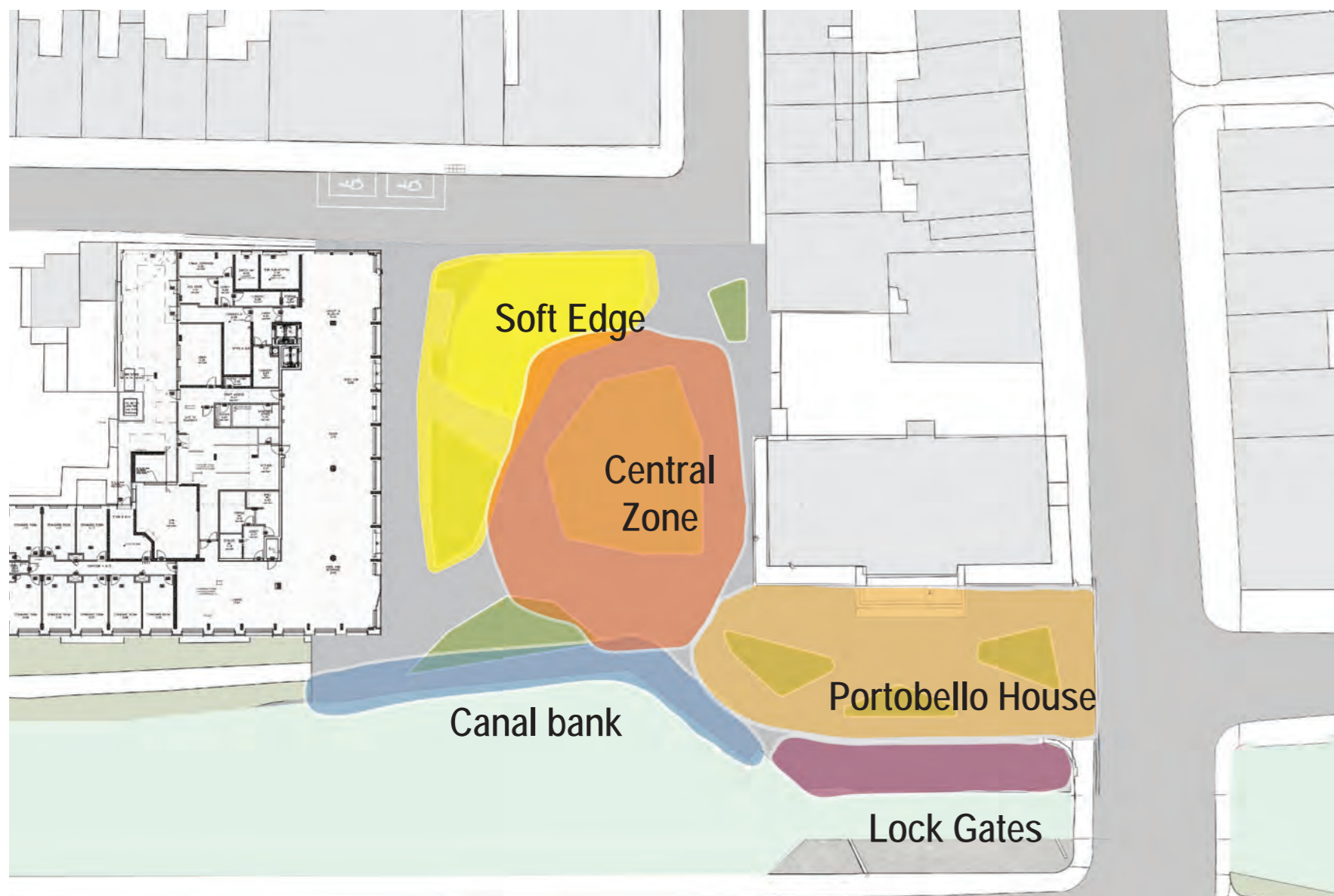
**Sketch Plan 2 - Preferred Option**



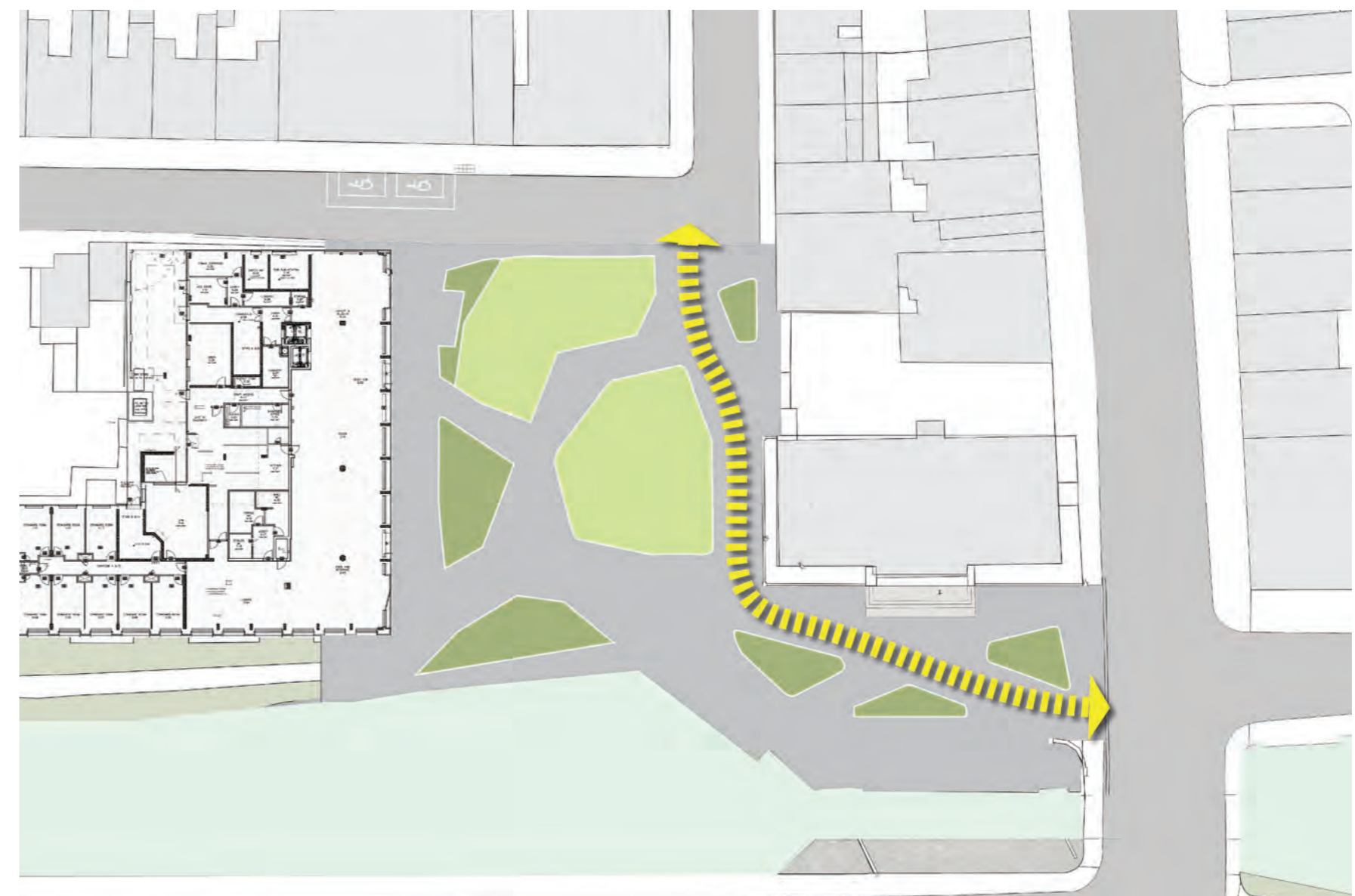




## Design Strategies



Sub spaces



2 way cycling - share with care.



Activity



Sitting edges and seating



Tree Canopy

- Large Canopy Trees
- Medium and small trees

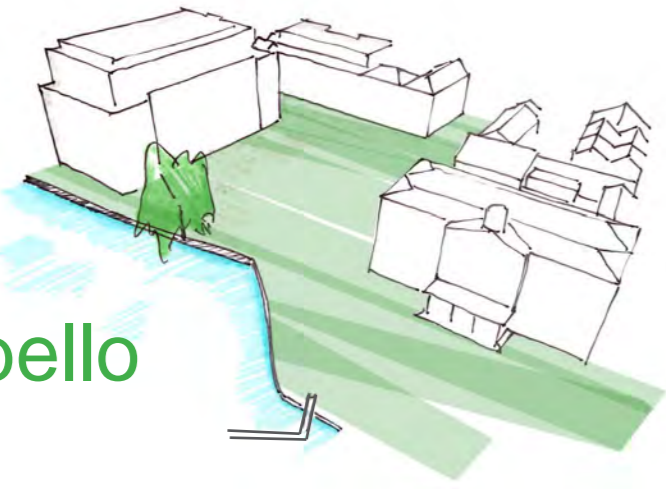


Greening and sustainable drainage

- Rain Garden
- Pollinator Friendly Planting



**Portobello**  
Harbour



Sketch Plan



**Portobello Harbour**

Scale 1:200



**K E Y**

1. Incidental and natural play elements
2. Hardwood seating
3. Rain Garden
4. Large specimen trees
5. Existing Willow
6. Lawn
7. Pollinator friendly planting
8. Line of heritage bollards and chainlink
9. Shared circulation area; pedestrian, cyclist and emergency access.
10. Cyclestands
11. Skate friendly kerbing and raised edges
12. Existing stone sett paving retained
13. Hedging to separate play activity from street
14. DAC set down space
15. Stepping Stones through Rain Garden



Hard and Soft landscape space



Skate friendly features



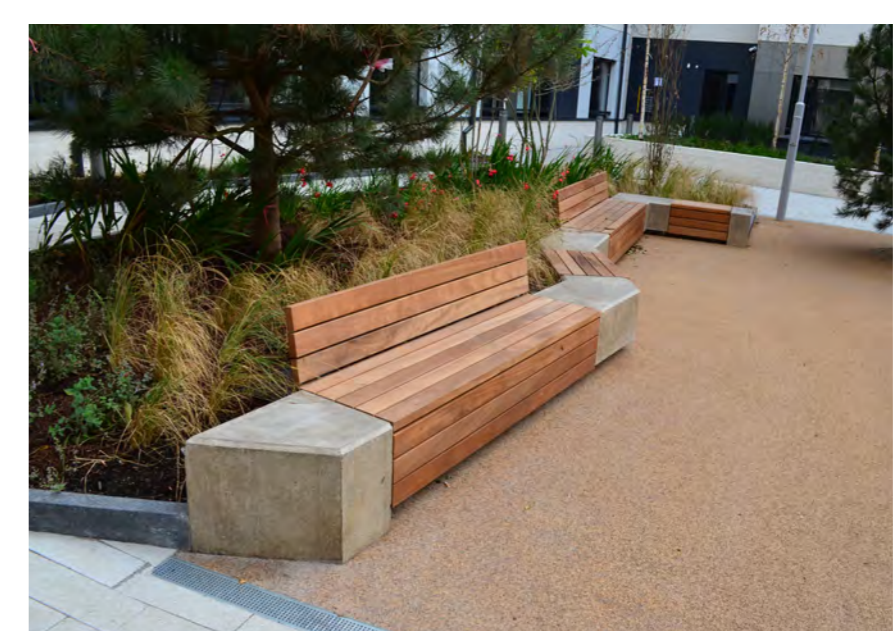
Share with care space



Stone paving; new and reused

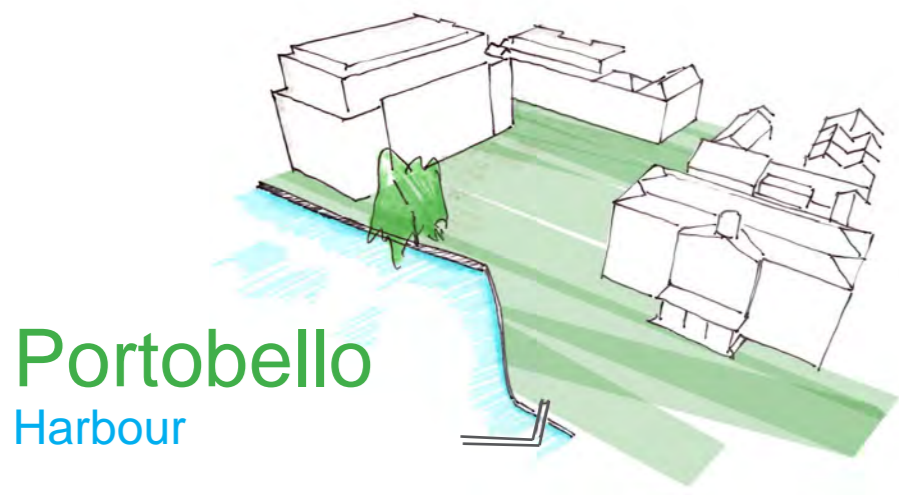


Pollinator Friendly planting



Seating





## Preliminary Views



## Southeast Aerial



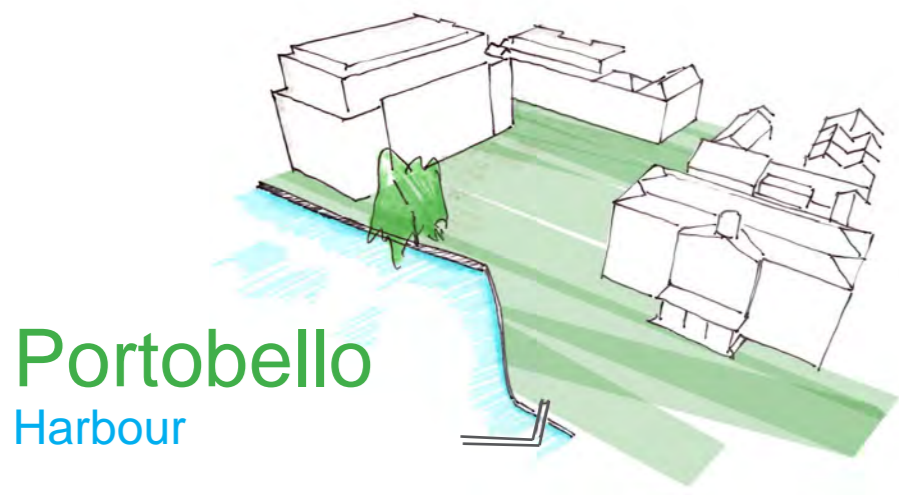
## Southeast Entry



## Southeast







## Preliminary Views



## Aerial View



## From front of New Hotel



## From south side of Canal

