

## LiAS Design Notes

This preliminary design is produced by the Lighting Application Specialist (LiAS) team of Signify UK&I based on information supplied by the Customer for the purpose of identifying suitable products and costing the proposal. This design cannot be used for Construction, as this design does not purport to eliminate health and safety risks as a CDM Regulation risk assessment has not been undertaken.

Depending on the level of information received, a number of assumptions may have been applied in order to create an indicative lighting proposal and costing model, according to lighting industry guidelines and incorporating industry best practice methods. These assumptions are documented below and will require confirmation by the Principle Designer or PSDP (which are not Signify UK&I) during the detailed design phase.

### Project Specific Assumptions

- None.

### Generic Assumptions (unless specifically informed differently)

- Preliminary Design proposals produced by the Signify LiAS Team are not to be used for installation purposes. It is the responsibility of the Principle Designer and/or Principle Contractor to ensure all Installation and Maintenance can be done in a safe manner, carried out by competent persons, based on their agreed Risk Assessments and Method Statements.
- The Luminaire Maintenance Factors have been based on 6-year cleaning intervals within an E3/E4 Environmental Zone and it is assumed that lamp/luminaire failures will be replaced on a 'spot replacement'.
- Energy consumptions have been based on the luminaire/s having Constant Light Output (CLO) enabled and the quoted wattage/s are the average over 100,000 hours (without dimming).
- The design calculations produced by Signify do not account for the effect obstructions, such as trees, will cause.
- Signify has not been provided with utility plans showing Buried, Above Ground or Overhead utilities. Therefore, all column/luminaire locations are indicative and are subject to review/verification by the Principle Designer.
- Unless stated otherwise, Signify has not visited site. Therefore, all column/luminaire locations are indicative and are subject to an onsite verification arranged/performed by the Principle Designer.
- Signify has not produced any Private Cable Network electrical calculations or reviewed the DNO network to confirm power supplies to the proposed lighting.
- Signify has not performed any asset condition testing and therefore assumes that any existing lighting columns/wall mounted brackets are structurally capable of supporting the weight & windage of the proposed luminaire/s. This must be verified by the Principle Designer before installation works commence.
- Unless stated otherwise, Signify is not supplying the new lighting columns (including brackets etc) and therefore it is the responsibility of the Principle Designers to confirm that all proposed equipment is suitable for the intended locations (e.g. raise & lower, ground condition, foundation type, saline environment, etc).
- Unless stated otherwise, luminaires will be supplied in their standard colour.

## Luminaire Schedule

→ BVP528 OUT T35 1xLED2590-4S/757/757 E3/D4I A35-NB LO  
→ BVP528 OUT T35 1xLED2590-4S/757/757 E3/D4I A35-MB LO  
→ BVP528 OUT T35 1xLED2590-4S/757/757 E3/D4I A35-WB LO  
→ BVP528 OUT T35 1xLED2590-4S/757/757 E3/D4I A35-NB LT

Proposal based on: Philips OptiVisionLED Gen3.5 Floodlight.  
Maximum output 5700k

### GAA Pitch

There are 8 No 2m columns with 7 No Floodlights on each (52 No in total)

to a maintained average of 584.7 lux 0.69 Uo, 0.51 Min/Max.

GR Max calculation is below 50 GR Max requirement (46.0).

### Football Pitch

There are 6 No 18m columns with 4 No Floodlights on each outer column

and 5 No Floodlights on each inner column (26 No in total) to a maintained

average of 490.5 lux 0.75 Uo, 0.57 Min/Max.

GR Max calculation is below 50 GR Max requirement (42.8).

### Training Area

There are 2 No 18m columns with 2 No Floodlights on each (4 No in total)

to a maintained average of 230.0 lux 0.75 Uo, 0.44 Min/Max.

GR Max calculation is below 50 GR Max requirement (40.9).

Less than 10 Lux on nearby houses.

Performance Floodlights use MF 0.95

Spill Light calculations use MF 1.0

### Products Used

48x BVP528 OUT T35 1xLED2590-4S/757/757 E3/D4I A35-NB LO

4x BVP528 OUT T35 1xLED2590-4S/757/757 E3/D4I A35-MB LO

6x BVP528 OUT T35 1xLED2590-4S/757/757 E3/D4I A35-WB LO

24x BVP528 OUT T35 1xLED2590-4S/757/757 E3/D4I A35-NB LT

note: on site tilt equals Tilt90 value minus 35 degrees.

## Philips Lighting Contacts

David Mulqueen, Key Account Manager - +353 87 1880370 - David.Mulqueen@Signify.com

Mark Davies, Lighting Application Specialist - 07979935894 - Mark.Davies@Signify.com

Quotes & Orders - 01483 446070 - Lighting.Sales.Outdoor@Signify.com







### Lighting Proposal Terms and Conditions of Use

These terms apply to the use of this preliminary proposal produced by Signify UK. This "Proposal" is understood to mean this document, a CAD drawing, lighting calculations, written documents, verbal conversations or any medium used to demonstrate or communicate the proposed lighting scheme using products from Signify's brands. A "Customer" is the person or organisation for whom the Proposal is intended. The "CDM Regulations" means The Construction, Design and Management Regulations 2015, the Safety, Health & Welfare at Work Act 2005, The Construction (Design & Management) Regulations (Northern Ireland) 2015.

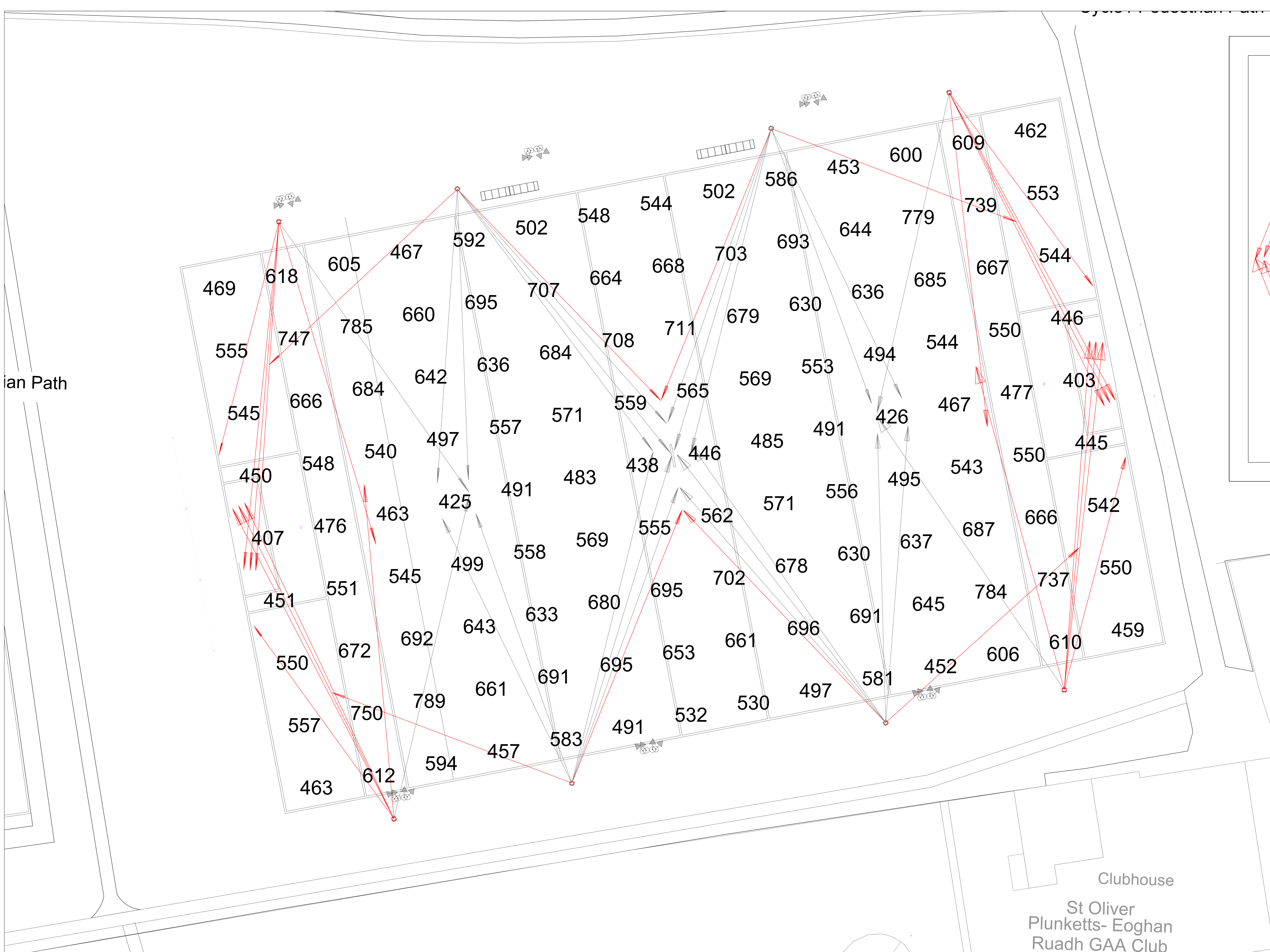
This Proposal is for guidance only and cannot be relied upon for purposes of installation or Health and Safety.

The supply and installation of this lighting scheme are subject to a contract being agreed between Customer and Signify.

**PROPOSAL**  
(NOT FOR CONSTRUCTION)

Rev	DSR no.	Comment	Date	LIAS	KAM	Project Number	Project Name
0	D-447345	Initial proposal.	24/03/22	MD	DM	0400715412	All Weather Pitch Martin Savage Park
1	D-520624	Pitch changes plus column moves.	13/07/22	MD	DM		
						Scale & Sheet Size	Drawing Name
						NTS @ A3	LiAS DESIGN NOTES & LUMINAIRE SCHEDULE
						Sheet No	
						DWG 00	





**Key:**

- BVP528 OUT T35 1xLED2590-4S/757/757 E3/D41 A35-NB LO
- BVP528 OUT T35 1xLED2590-4S/757/757 E3/D41 A35-MB LO
- BVP528 OUT T35 1xLED2590-4S/757/757 E3/D41 A35-WB LO
- BVP528 OUT T35 1xLED2590-4S/757/757 E3/D41 A35-NB LT

Proposal based on: Philips OptiVisionLED Gen3.5 Floodlight.  
Maximum output 5700k

**GAA Pitch**  
There are 8 No 2m columns with 7 No Floodlights on each (52 No in total)  
to a maintained average of 584.7 lux 0.69 Uo, 0.51 Min/Max.  
GR Max calculation is below 50 GR Max requirement (46.0).

**Football Pitch**  
There are 6 No 18m columns with 4 No Floodlights on each outer column  
and 5 No Floodlights on each inner column (26 No in total) to a maintained  
average of 490.5 lux 0.75 Uo, 0.57 Min/Max.  
GR Max calculation is below 50 GR Max requirement (42.8).

**Training Area**  
There are 2 No 18m columns with 2 No Floodlights on each (4 No in total)  
to a maintained average of 230.0 lux 0.75 Uo, 0.44 Min/Max.  
GR Max calculation is below 50 GR Max requirement (40.9).

Less than 10 Lux on nearby houses.

Performance Floodlights use MF 0.95  
Spill Light calculations use MF 1.0

Products Used

48x BVP528 OUT T35 1xLED2590-4S/757/757 E3/D41 A35-NB LO  
4x BVP528 OUT T35 1xLED2590-4S/757/757 E3/D41 A35-MB LO  
6x BVP528 OUT T35 1xLED2590-4S/757/757 E3/D41 A35-WB LO  
24x BVP528 OUT T35 1xLED2590-4S/757/757 E3/D41 A35-NB LT  
note: on site tilt equals Tilt90 value minus 35 degrees.

ian Path

Clubhouse  
St Oliver  
Plunketts- Eoghan  
Ruadh GAA Club



Notes:

- Unless agreed otherwise, the lighting proposal produced by the Lighting Application Specialist (LIAS) team of Philips Lighting UK&I is not intended for construction purposes, as it does not take into account the elimination of health and safety risks at this stage. For further details please refer to sheet number DWG 00
- Do not scale for this drawing

**PROPOSAL**  
(NOT FOR CONSTRUCTION)

Rev	DSR no.	Comment	Date	LIAS	KAM
0	D-447345	Initial proposal.	24/03/22	MD	DM
1	D-520624	Pitch changes plus column moves.	13/07/22	MD	DM

Project Number	0400715412	Project Name	All Weather Pitch Martin Savage Park
Scale & Sheet Size	1:200 @ A0	Drawing Name	GAA Pitch Results
Sheet No	DWG 01		



# Care estrian Path

## Key:

- BVP528 OUT T35 1xLED2590-4S/757/757 E3/D41 A35-NB LO
- BVP528 OUT T35 1xLED2590-4S/757/757 E3/D41 A35-MB LO
- BVP528 OUT T35 1xLED2590-4S/757/757 E3/D41 A35-WB LO
- BVP528 OUT T35 1xLED2590-4S/757/757 E3/D41 A35-NB LT

Proposal based on: Philips OptiVisionLED Gen3.5 Floodlight.  
Maximum output 5700k

**GAA Pitch**  
There are 8 No 2m columns with 7 No Floodlights on each (52 No in total)  
to a maintained average of 584.7 lux 0.69 Uo, 0.51 Min/Max.  
GR Max calculation is below 50 GR Max requirement (46.0).

**Football Pitch**  
There are 6 No 18m columns with 4 No Floodlights on each outer column  
and 5 No Floodlights on each inner column (26 No in total) to a  
maintained average of 490.5 lux 0.75 Uo, 0.57 Min/Max.  
GR Max calculation is below 50 GR Max requirement (42.8).

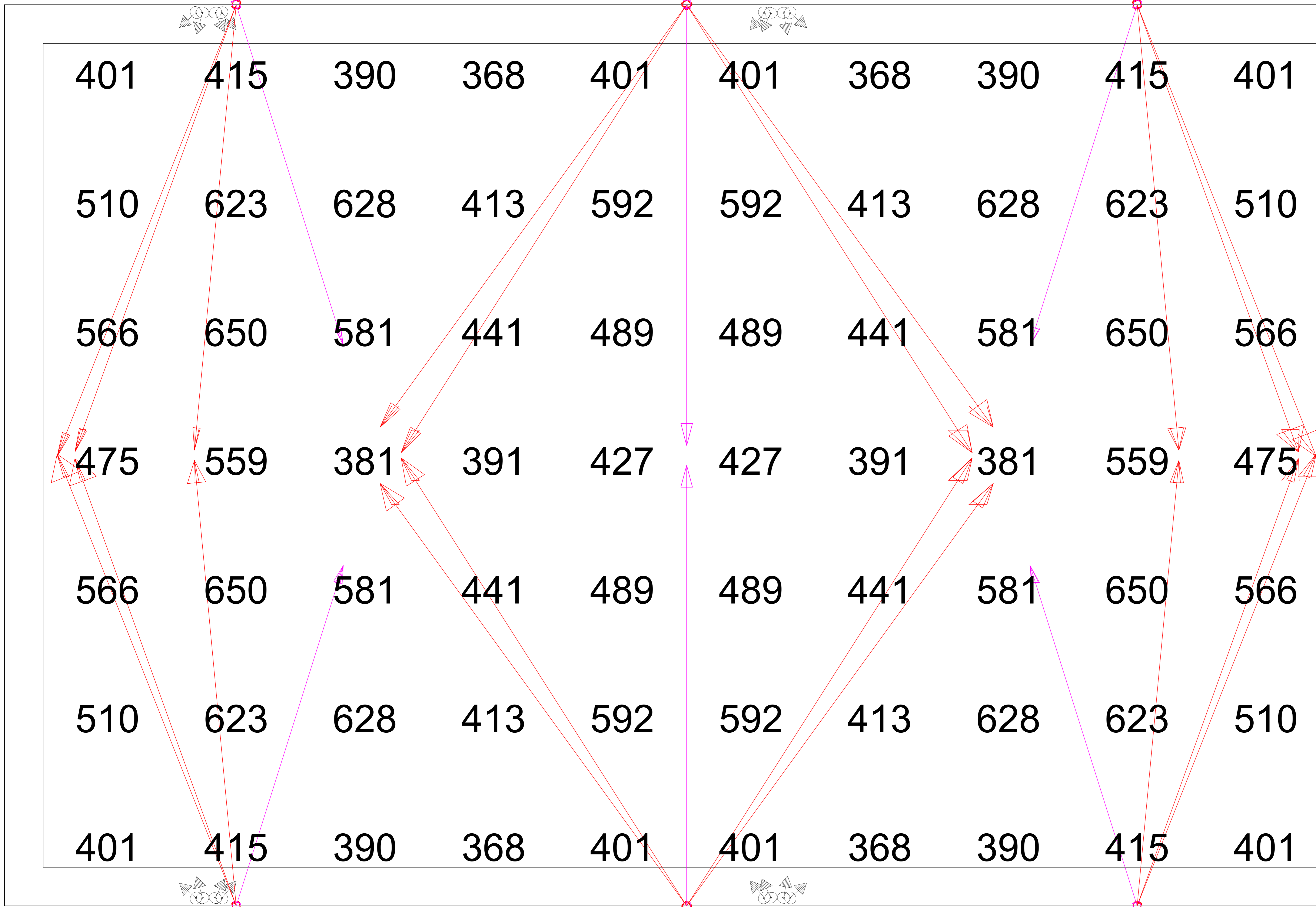
**Training Area**  
There are 2 No 18m columns with 2 No Floodlights on each (4 No in total)  
to a maintained average of 230.0 lux 0.75 Uo, 0.44 Min/Max.  
GR Max calculation is below 50 GR Max requirement (40.9).

Less than 10 Lux on nearby houses.

Performance Floodlights use MF 0.95  
Spill Light calculations use MF 1.0

**Products Used**

48x BVP528 OUT T35 1xLED2590-4S/757/757 E3/D41 A35-NB LO  
4x BVP528 OUT T35 1xLED2590-4S/757/757 E3/D41 A35-MB LO  
6x BVP528 OUT T35 1xLED2590-4S/757/757 E3/D41 A35-WB LO  
24x BVP528 OUT T35 1xLED2590-4S/757/757 E3/D41 A35-NB LT  
note: on site tilt equals Tilt90 value minus 35 degrees.



Notes:

- Unless agreed otherwise, the lighting proposal produced by the Lighting Application Specialist (LIAS) team of Philips Lighting UK&I is not intended for construction purposes, as it does not take into account the elimination of health and safety risks at this stage. For further details please refer to sheet number DWG 00
- Do not scale for this drawing

**PROPOSAL**  
(NOT FOR CONSTRUCTION)

Rev	DSR no.	Comment	Date	LIAS	KAM
0	D-447345	Initial proposal.	24/03/22	MD	DM
1	D-520624	Pitch changes plus column moves.	13/07/22	MD	DM

Project Number	0400715412
Scale & Sheet Size	1:125 @ A0
Sheet No	DWG 02

Project Name	All Weather Pitch Martin Savage Park
Drawing Name	Football Pitch Results



**Key:**

- BVP528 OUT T35 1xLED2590-4S/757/757 E3/D41 A35-NB LO
- BVP528 OUT T35 1xLED2590-4S/757/757 E3/D41 A35-MB LO
- BVP528 OUT T35 1xLED2590-4S/757/757 E3/D41 A35-WB LO
- BVP528 OUT T35 1xLED2590-4S/757/757 E3/D41 A35-LT

Proposal based on: Philips OptiVisionLED Gen3.5 Floodlight.  
Maximum output 5700k

**GAA Pitch**  
There are 8 No 2m columns with 7 No Floodlights on each (52 No in total)  
to a maintained average of 584.7 lux 0.69 Uo, 0.51 Min/Max.  
GR Max calculation is below 50 GR Max requirement (46.0).

**Football Pitch**  
There are 6 No 18m columns with 4 No Floodlights on each outer column  
and 5 No Floodlights on each inner column (26 No in total) to a maintained  
average of 490.5 lux 0.75 Uo, 0.57 Min/Max.  
GR Max calculation is below 50 GR Max requirement (42.8).

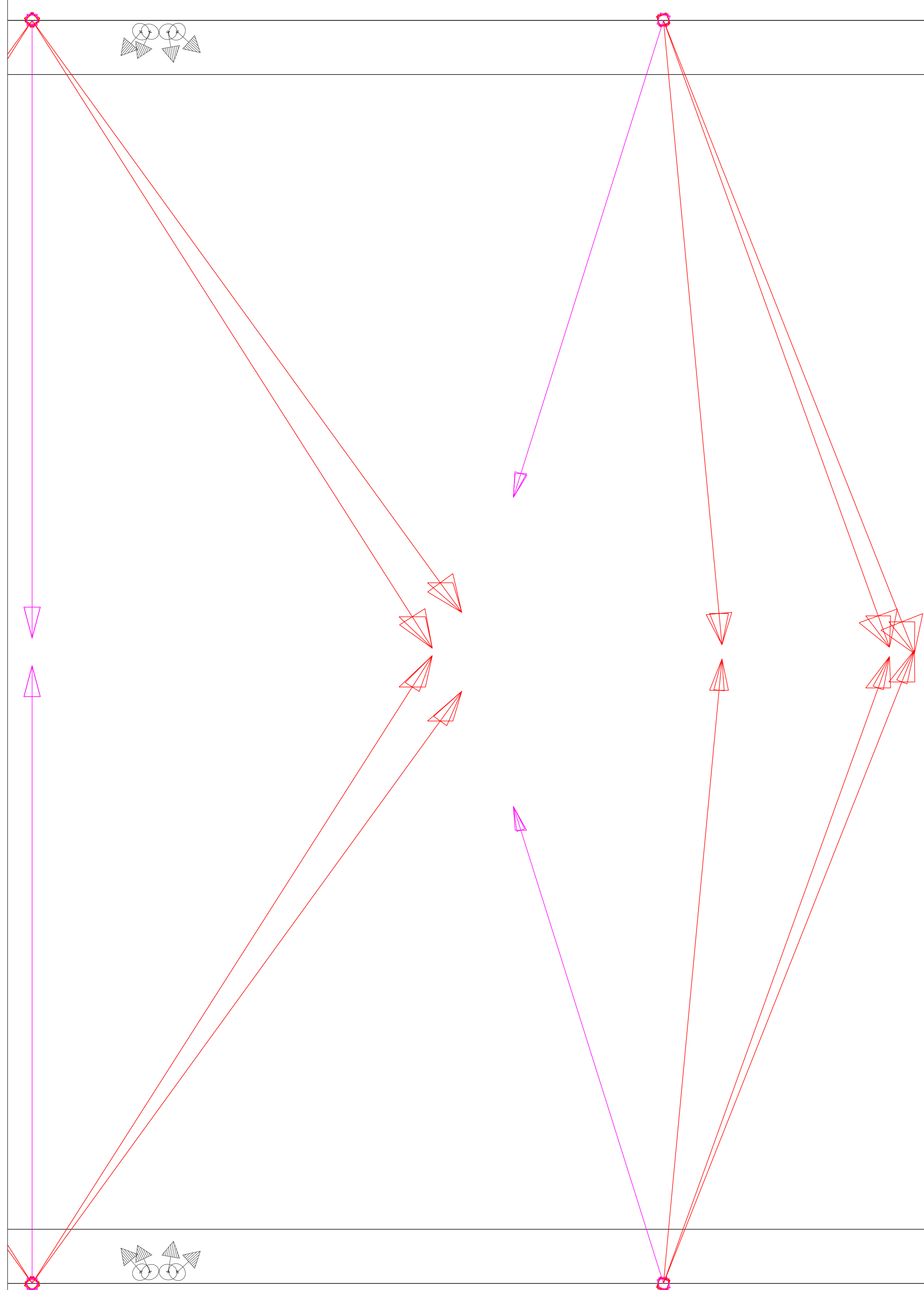
**Training Area**  
There are 2 No 18m columns with 2 No Floodlights on each (4 No in total)  
to a maintained average of 230.0 lux 0.75 Uo, 0.44 Min/Max.  
GR Max calculation is below 50 GR Max requirement (40.9).

Less than 10 Lux on nearby houses.

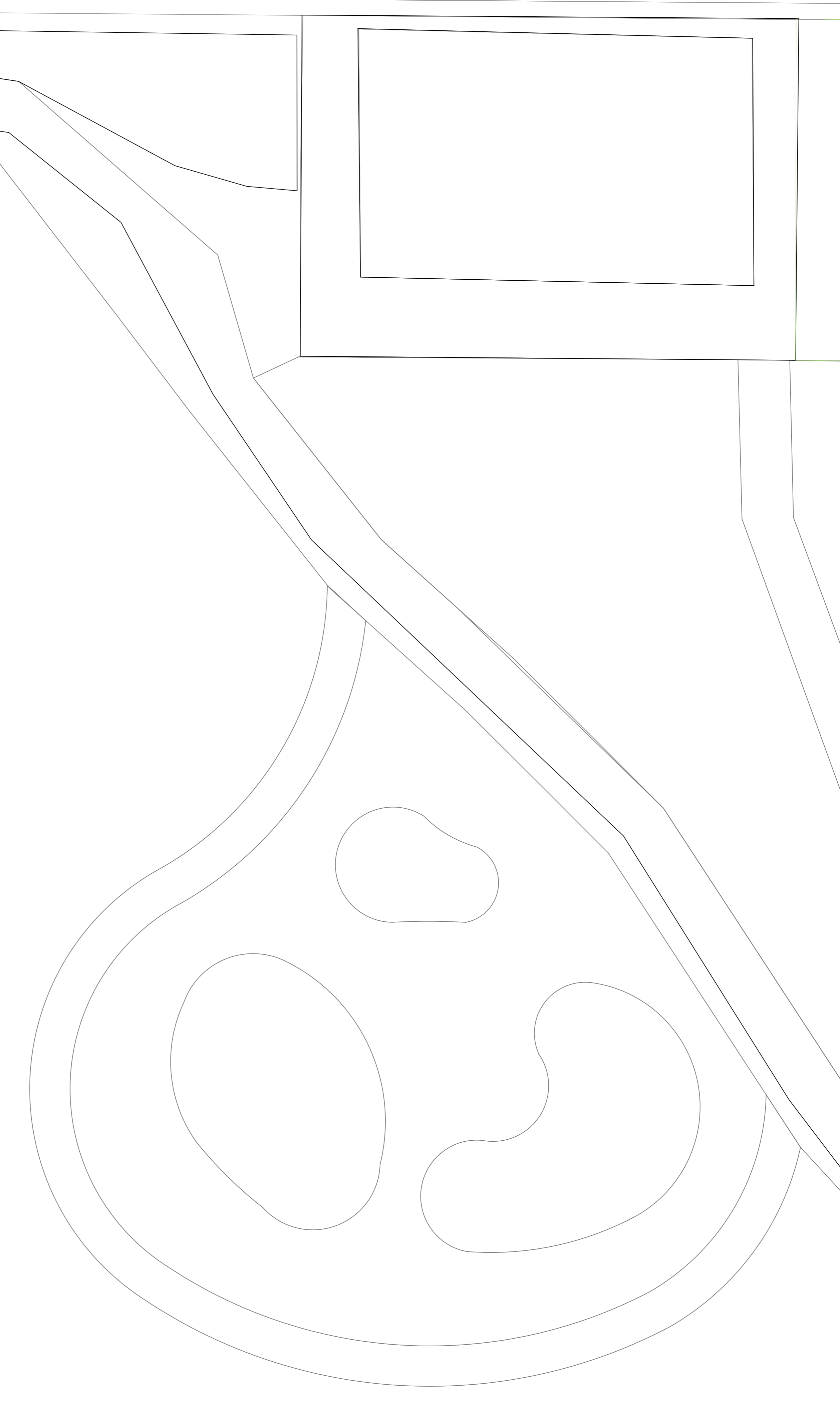
Performance Floodlights use MF 0.95  
Spill Light calculations use MF 1.0

**Products Used**

48x BVP528 OUT T35 1xLED2590-4S/757/757 E3/D41 A35-NB LO  
4x BVP528 OUT T35 1xLED2590-4S/757/757 E3/D41 A35-MB LO  
6x BVP528 OUT T35 1xLED2590-4S/757/757 E3/D41 A35-WB LO  
24x BVP528 OUT T35 1xLED2590-4S/757/757 E3/D41 A35-LT  
note: on site tilt equals Tilt90 value minus 35 degrees.



192	318	389	318	192
236	342	388	342	236
205	268	294	268	205
181	217	232	217	181
172	195	205	195	172
172	195	204	195	172
174	199	207	199	174
174	199	207	199	174
172	195	204	195	172
172	195	205	195	172
181	217	232	217	181
205	268	294	268	205
236	342	388	342	236
192	318	389	318	192



Project Name  
**All Weather Pitch Martin Savage Park**

Drawing Name  
**Training Area Results**

Notes:

- Unless agreed otherwise, the lighting proposal produced by the Lighting Application Specialist (LIAS) team of Philips Lighting UK&I is not intended for construction purposes, as it does not take into account the elimination of health and safety risks at this stage. For further details please refer to sheet number **DWG 00**
- Do not scale for this drawing

**PROPOSAL**  
(NOT FOR CONSTRUCTION)

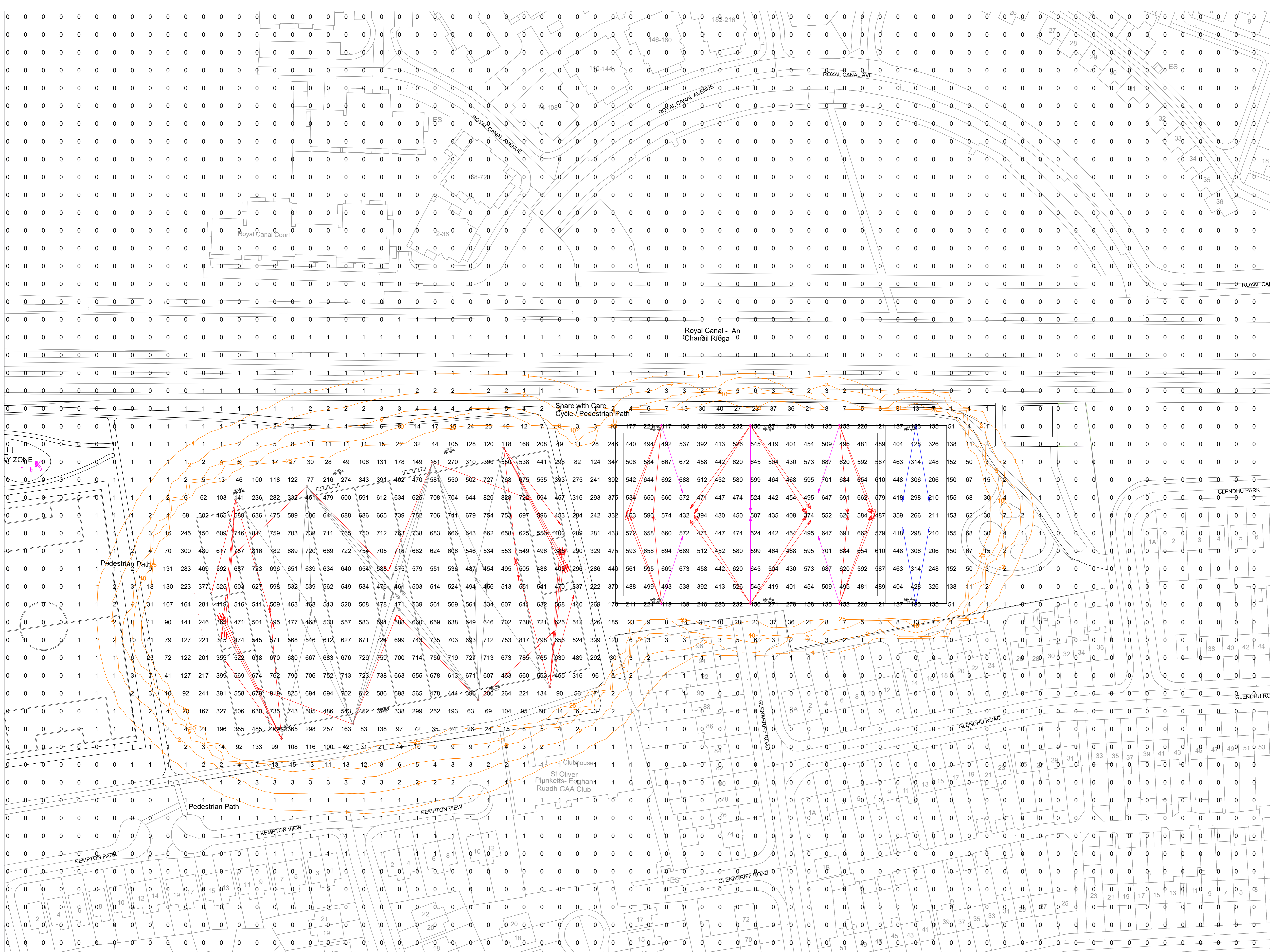
Rev	DSR no.	Comment	Date	LIAS	KAM
0	D-447345	Initial proposal.	24/03/22	MD	DM
1	D-520624	Pitch changes plus column moves.	13/07/22	MD	DM

Project Number  
**0400715412**

Scale & Sheet Size  
**1:125 @ A0**

Sheet No  
**DWG 03**





**Key:**

- ➔ BVP528 OUT T35 1xLED2590-4S/75/757 E3/D41 A35-NB LO
- ➔ BVP528 OUT T35 1xLED2590-4S/75/757 E3/D41 A35-MB LO
- ➔ BVP528 OUT T35 1xLED2590-4S/75/757 E3/D41 A35-WB LO
- ➔ BVP528 OUT T35 1xLED2590-4S/75/757 E3/D41 A35-NB LT

Proposal based on: Philips OptiVisionLED Gen3.5 Floodlight.  
Maximum output 5700k

GAA Pitch  
There are 8 No 2m columns with 7 No Floodlights on each (52 No in total)  
to a maintained average of 584.7 lux 0.69 Uo, 0.51 Min/Max.  
GR Max calculation is below 50 GR Max requirement (46.0).

Football Pitch  
There are 6 No 18m columns with 4 No Floodlights on each outer column  
and 5 No Floodlights on each inner column (26 No in total) to a maintained  
average of 490.5 lux 0.75 Uo, 0.57 Min/Max.  
GR Max calculation is below 50 GR Max requirement (42.8).

Training Area  
There are 2 No 18m columns with 2 No Floodlights on each (4 No in total)  
to a maintained average of 230.0 lux 0.75 Uo, 0.44 Min/Max.  
GR Max calculation is below 50 GR Max requirement (40.9).

Less than 10 Lux on nearby houses.

Performance Floodlights use MF 0.95  
Spill Light calculations use MF 1.0

Products Used

48x BVP528 OUT T35 1xLED2590-4S/75/757 E3/D41 A35-NB LO  
4x BVP528 OUT T35 1xLED2590-4S/75/757 E3/D41 A35-MB LO  
6x BVP528 OUT T35 1xLED2590-4S/75/757 E3/D41 A35-WB LO  
24x BVP528 OUT T35 1xLED2590-4S/75/757 E3/D41 A35-NB LT  
note: on site tilt equals Tilt90 value minus 35 degrees.

Notes:

- Unless agreed otherwise, the lighting proposal produced by the Lighting Application Specialist (LIAS) team of Philips Lighting UK&I is not intended for construction purposes, as it does not take into account the elimination of health and safety risks at this stage. For further details please refer to sheet number **DWG 00**
- Do not scale for this drawing

**PROPOSAL**  
(NOT FOR CONSTRUCTION)

Rev	DSR no.	Comment	Date	LIAS	KAM
0	D-447345	Initial proposal.	24/03/22	MD	DM
1	D-520624	Pitch changes plus column moves.	13/07/22	MD	DM

Project Number	<b>0400715412</b>
Scale & Sheet Size	<b>1:500 @ A0</b>
Sheet No	<b>DWG 04</b>



Project Name  
**All Weather Pitch Martin Savage Park**

Drawing Name  
**Spill Light @ 0m**