

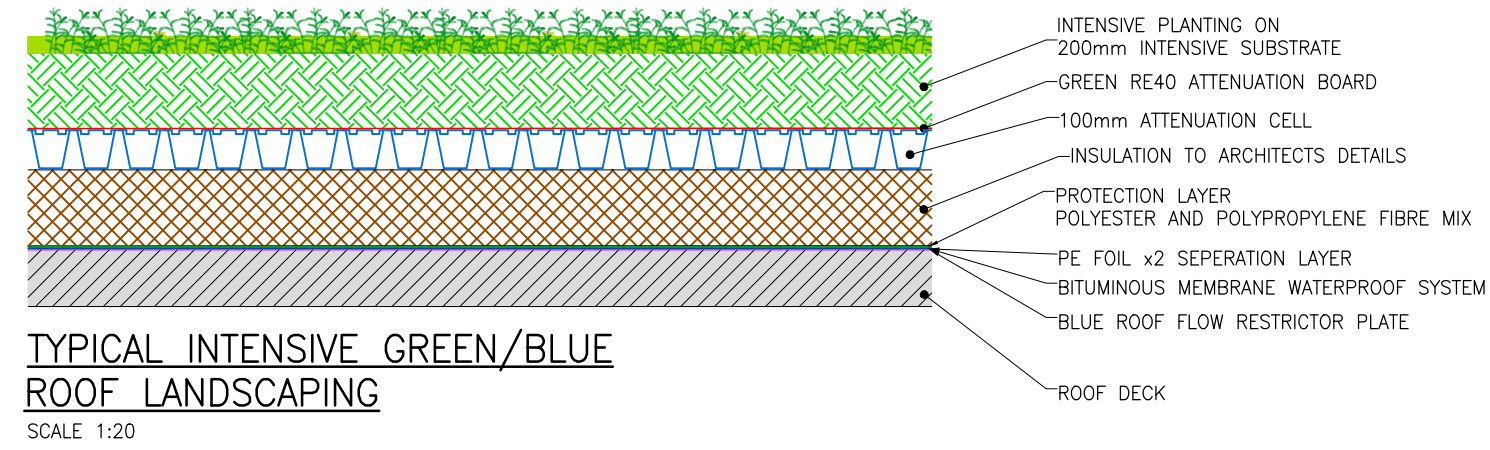
NO PART OF THIS DRAWING MAY BE REPRODUCED OR TRANSMITTED IN ANY FORM OR STORED IN ANY RETRIEVAL SYSTEM OF ANY NATURE WITHOUT THE WRITTEN PERMISSION OF MALONE O'REGAN CONSULTING ENGINEERS AS COPYRIGHT HOLDER EXCEPT AS AGREED FOR USE ON THE PROJECT FOR WHICH THE DRAWING WAS ORIGINALLY CREATED.

THIS DRAWING TO BE READ IN CONJUNCTION WITH ALL OTHER RELEVANT DRAWINGS, SPECIFICATIONS AND THE PRELIMINARY HEALTH & SAFETY PLAN.

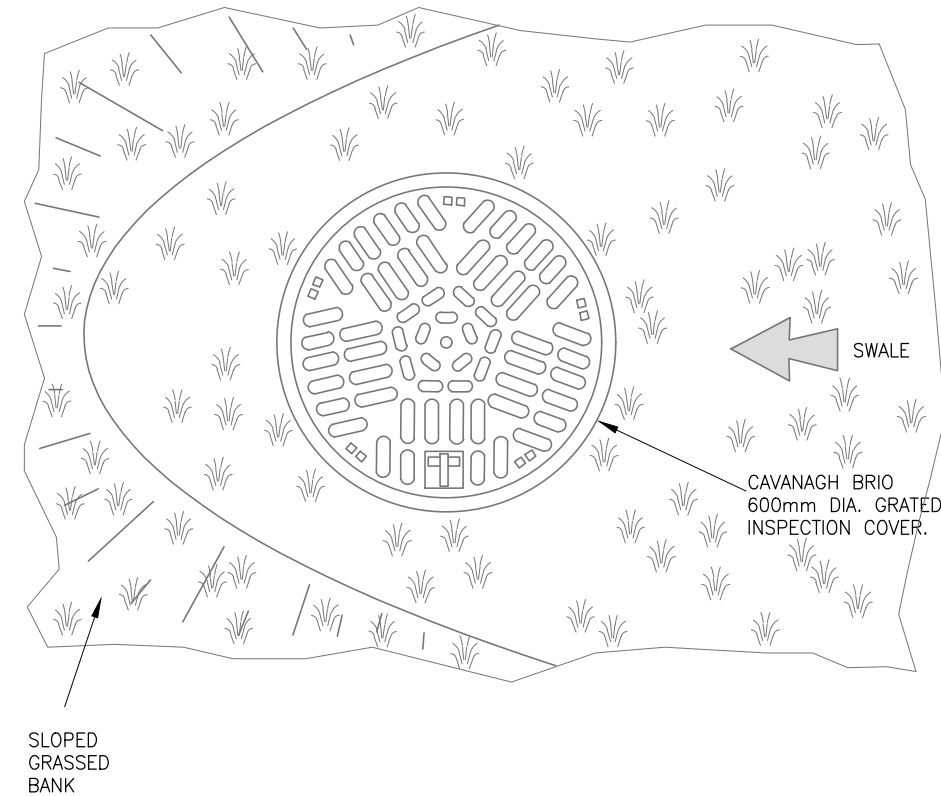
ALL DIMENSIONS ARE IN mm UNLESS NOTED OTHERWISE. DO NOT SCALE DIMENSIONS.

THE CONTRACTOR SHALL CHECK ALL DIMENSIONS PRIOR TO THE COMMENCEMENT OF CONSTRUCTION. ALL DISCREPANCIES SHALL BE REPORTED TO THIS OFFICE IN WRITING.

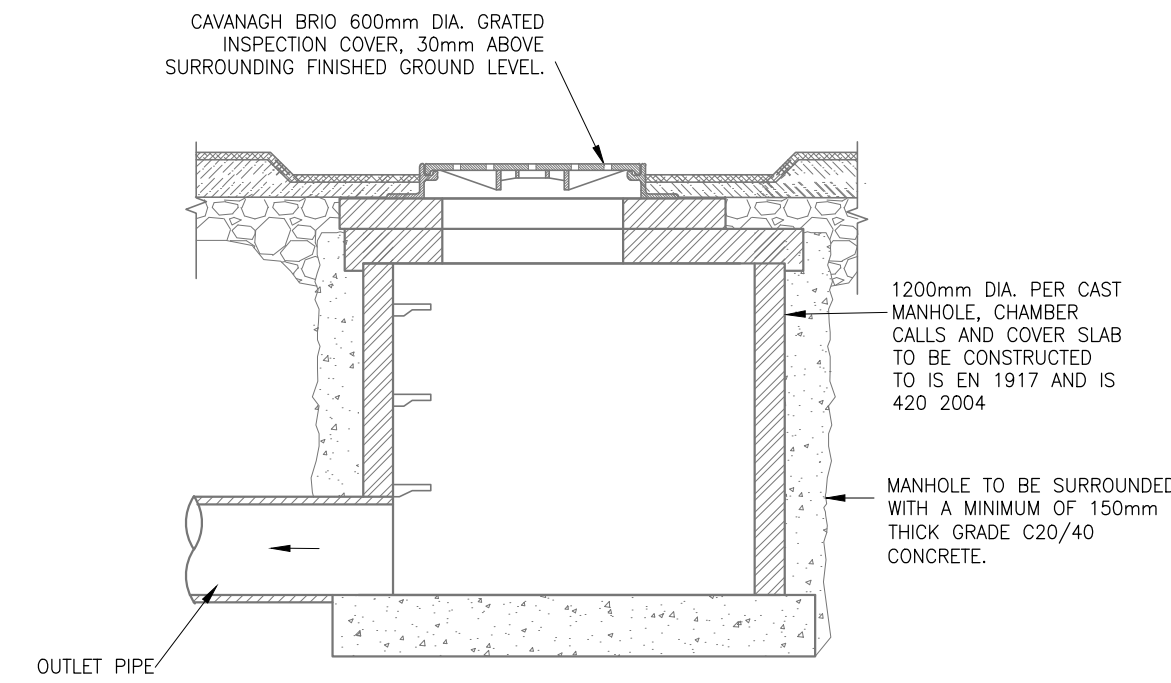
NOTES



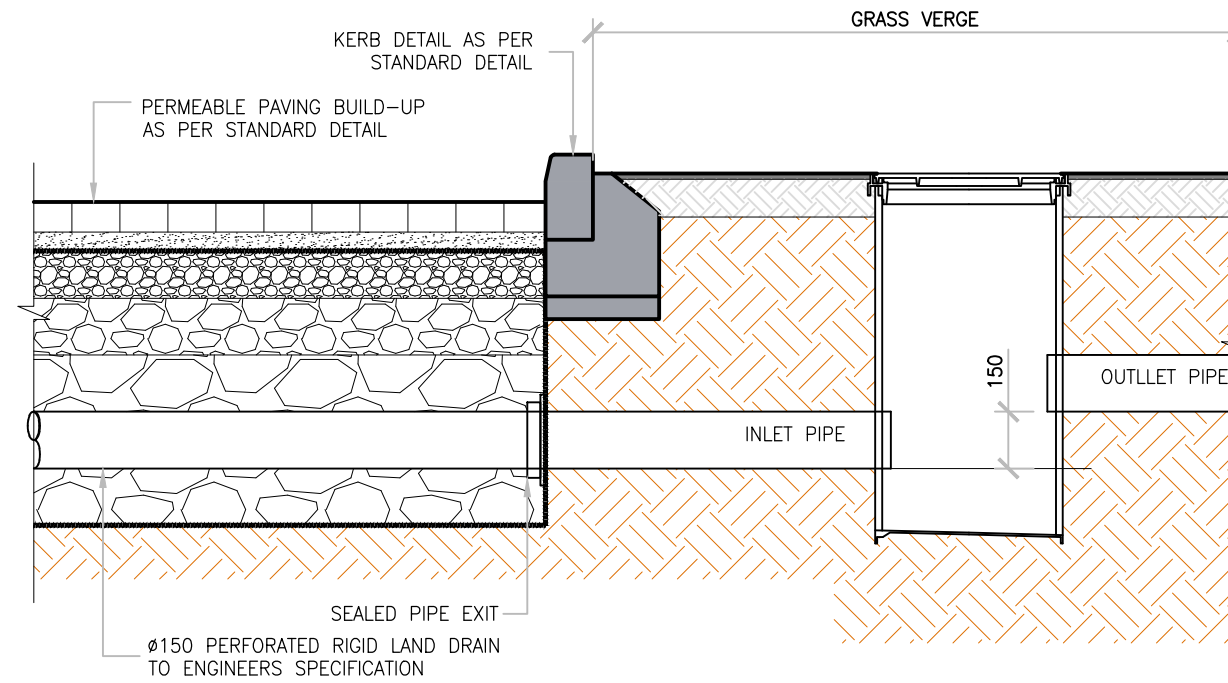
TYPICAL INTENSIVE GREEN/BLUE ROOF LANDSCAPING  
SCALE 1:20



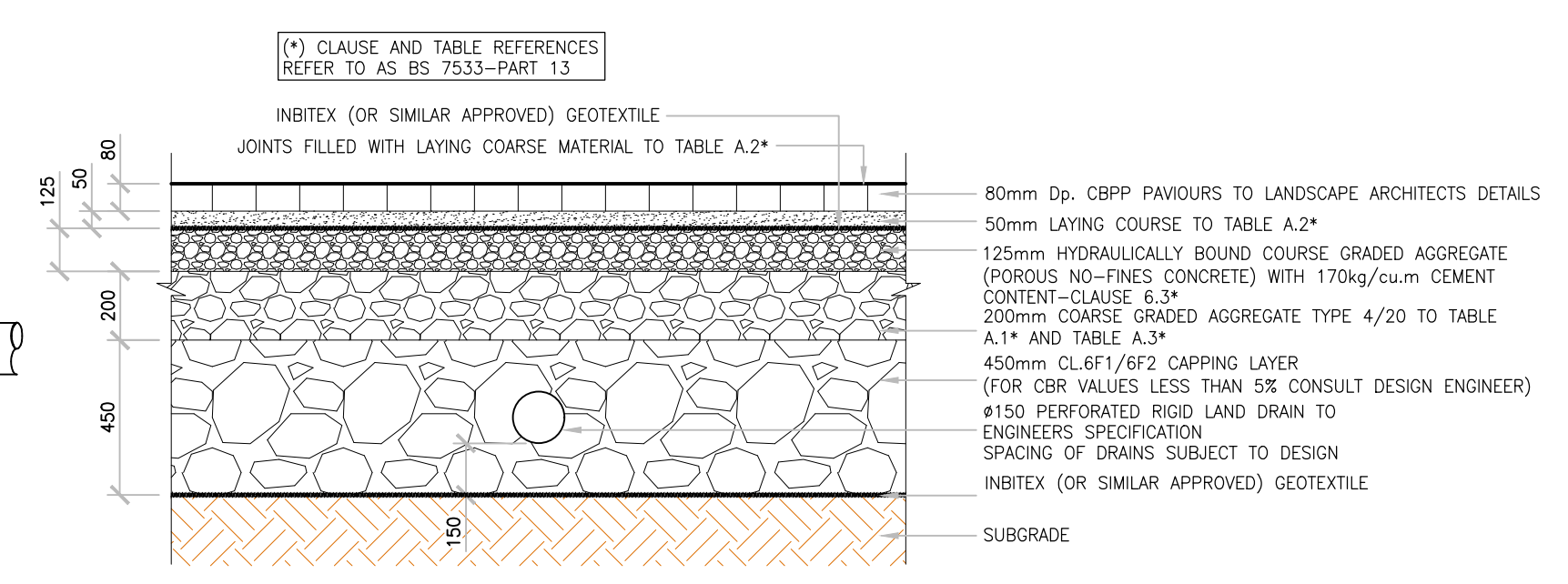
GRATED MANHOLE PLAN DETAIL D.  
SCALE: N.T.S.



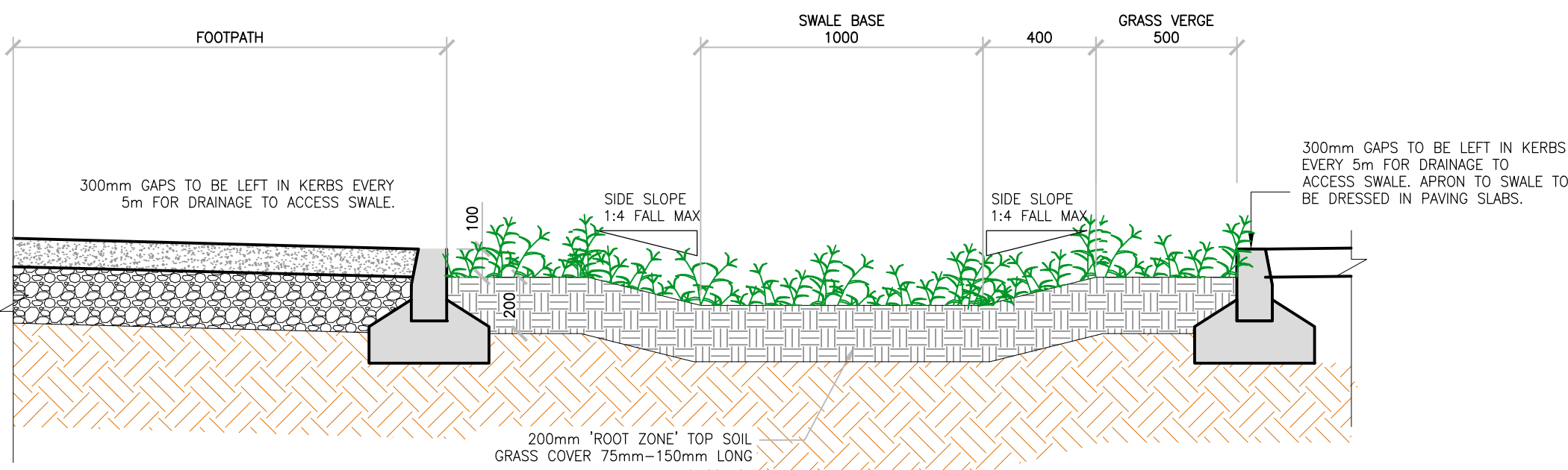
GRATED MANHOLE INLET CHAMBER - CROSS-SECTION  
SCALE: N.T.S.



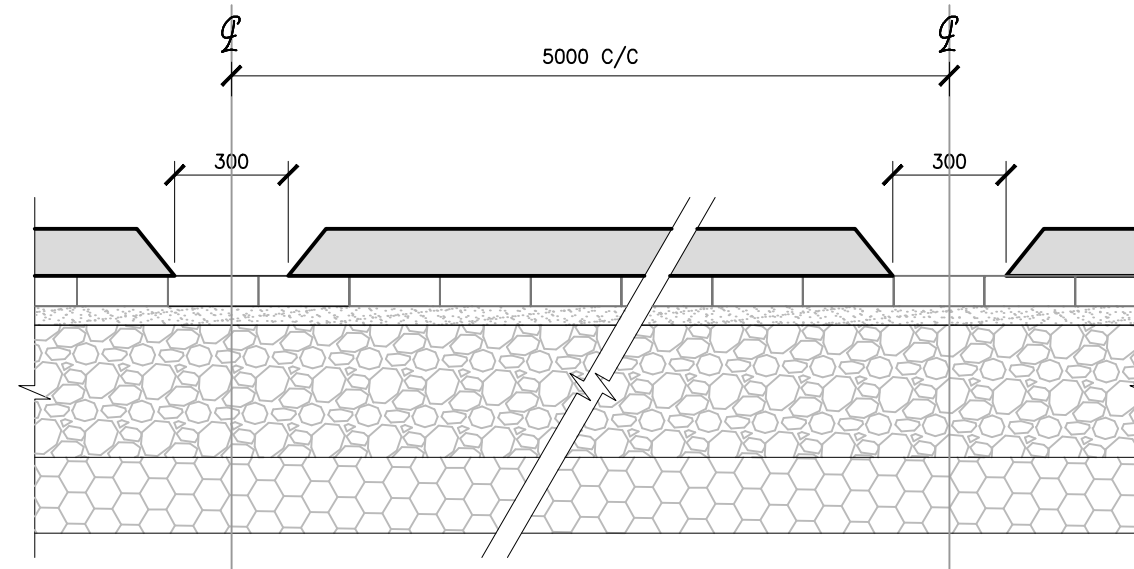
TYPICAL PERMEABLE PAVING OUTLET DETAIL  
SCALE 1:20



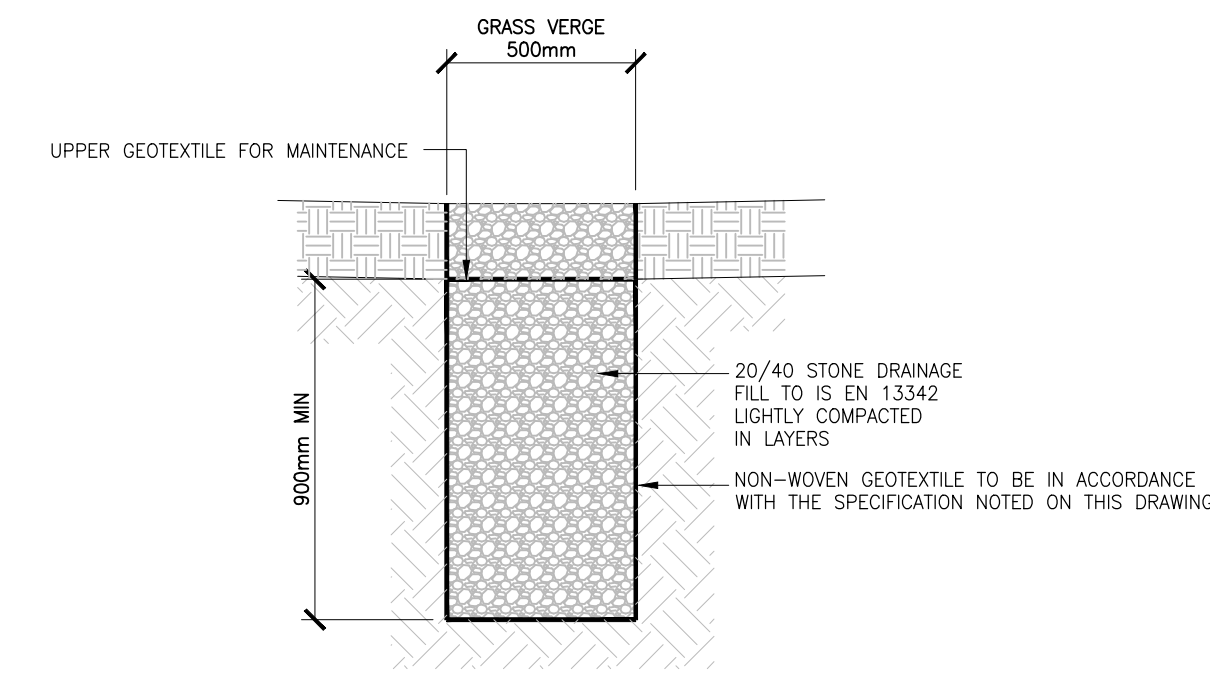
PERMEABLE PAVING DETAIL  
SCALE 1:20



TYPICAL SECTION THROUGH SWALE TAKING DRAINAGE FROM A HARDSTANDING AREA  
SCALE 1:20

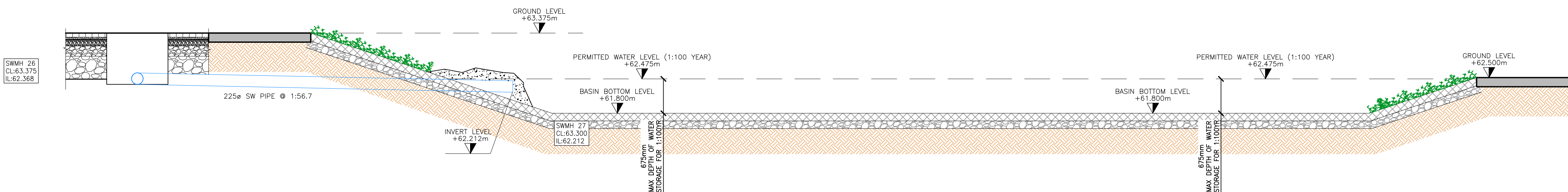


TYPICAL ELEVATION



TYPICAL SECTION THROUGH RAINGARDEN/BIORETENTION AREA  
SCALE 1:20

PROPOSED DETENTION BASIN "SITE 15&16"  
LEVELS CHECK  
LOWEST FFL = 62.475m  
PERMITTED 1:100 YEAR WATER LEVEL = 62.475m  
SIDE SLOPE = 1:3  
TOP OF EMBANKMENT = VARIES FROM 63.375m - 62.50m  
1:100 YEAR WATER LEVEL = 62.475m  
LEVEL AT BASE OF POND = 61.800m  
TOP AREA OF BASIN AT 1:100YR STORM WATER = 98.058m<sup>2</sup>  
BOTTOM AREA OF BASIN AT 1:100YR STORM WATER = 30.253m<sup>2</sup>  
AVERAGE AREA = 64.156m<sup>2</sup>  
1:100YR STORM VOLUME PROVIDED = 64.156m<sup>2</sup> x 0.675m = 43.304m<sup>3</sup>  
1:100YR STORM VOLUME REQUIRED = 37.301m<sup>3</sup>



SITE 17:  
SECTION THRU DETENTION BASIN INLET  
SCALE 1:50

1	ISSUED FOR PLANNING	21.10.24	KD	KA
0	ISSUED FOR INFORMATION	22.07.24	KA	DW
REV	DESCRIPTION	DATE	BY	CHK

STATUS: P3 - PLANNING

**ADR**  
MALONE O'REGAN  
CONSULTING ENGINEERS

Unit 2B Richview Office Park,  
Clonskeagh,  
DUBLIN 14  
D14 XT57

T: +353 1 260 2655  
E: dublin@morco.ie  
W: www.maloneoregan.ie

Offices also in:  
GALWAY T: +353 91 531 069 E: galway@morco.ie  
WATERFORD T: +353 51 876 855 E: waterford@morco.ie

CLIENT: NDFCA ON BEHALF OF DUBLIN CITY COUNCIL

JOB NAME: SOCIAL HOUSING BUNDLE 4, DEVELOPMENT AT BALLYMUN

DRG. NAME: SITE DEVELOPMENT DETAILS  
SHEET 3  
SUDS DRAINAGE DETAILS

JOB REF	SHEET	SCALE	DATE	BY	ENG	APP	REV.
23006	A1	SHOWN	NOV/2023	KA	KA	PB	1

DRG. NO: SHB5-BMD-DR-MOR-CS-P3-151