

Proposed Part 8 Residential Development at

**Collins Avenue, Whitehall,
Dublin 9**

**Climate Action Energy
Statement, Sustainability & Part
L Compliance Report**



Document History

Version	Issued	Comments
0	11th April 2024	
P1	9 th July 2024	Updated in line with comments

Contents

1	INTRODUCTION	2
2	BUILDING REGULATIONS PART L 2022 DWELLINGS.....	5
3	DCC DEVELOPMENT PLAN OBJECTIVES & POLICIES.....	9
4	BUILDING FABRIC	12
5	HEAT SOURCES & RENEWABLE ENERGY OPTIONS.....	14
6	EV (ELECTRIC VEHICLE) CHARGING COMPLIANCE.....	19
7	EMBODIED CARBON ASSESSMENT	20
8	STUDY FINDINGS	22
9	RECOMMENDATIONS.....	23
10	CLIMATE CHANGE SUSTAINABLE STRATEGY.....	24
11	APPENDIX A - INFORMATION REQUIREMENTS FOR DISTRICT HEATING ENABLED DEVELOPMENTS	26
12	APPENDIX B - CLIMATE ACTION AND ENERGY STATEMENT	29

1 INTRODUCTION

This Climate Action Statement, Sustainability & Part L Compliance Report was prepared on behalf of the National Development Finance Agency (NDFA) and Dublin City Council, to accompany a Part 8 proposal for the development of 106 no. residential units located at Collins Avenue, Whitehall, Dublin 9.

This document provides an overview of the energy strategy for this new development to support the Part 8 circulation. The main aim is to meet or exceed the sustainability and energy targets and overheating risk assessment set by the Irish Building Regulations, Technical Guidance Document Part L 2022 – Conservation of Fuel and Energy - Dwellings. This report looks at how the design team have reviewed the proposed development and identified opportunities to implement nearly Zero Energy Buildings (nZEB) solutions to reduce the energy demand from building services and meet the targets of Part L 2022 for Dwellings. To that end several passive and active strategies described in detail in Section 4 were implemented. Primary energy sources were also evaluated to identify the most suitable solution for the development. As stipulated in the Part L 2022 for Dwellings, a DEAP (Dwelling Energy Assessment Procedure) assessment was conducted to evaluate the primary energy consumption and carbon emissions associated with the operation of the dwellings and verify they are in line with the current regulation. All the building services options presented in this report under Section 4 for each building type of the development have demonstrated compliance with Part L 2022 for Dwellings

The development at the site will consist of the following:

The development is for the proposed development of new social housing on a brownfield site at Collins Avenue, within the townlands of Whitehall, North Dublin. Development at the site will consist of the following:

- The demolition of the existing office building, sheds, warehouses and garages and site clearance works.
- Three apartment blocks comprising a total of 106 residential units and 375 sqm of community, arts and cultural space.
 - o Block A ranges from 3 to 6 storeys and consists of 50 no. residential units (22 no. 1 bed, 20 no. 2 bed and 8 no. 3 bed units) and 275 sqm of community, arts and cultural facilities at ground floor level.
 - o Block B ranges from 4 to 6 storeys and consists of 38 no. residential units (17 no. 1 bed, 9 no. 2 bed and 12 no. 3 bed units) and 100 sqm of community, arts and cultural facilities at ground floor level.
 - o Block C ranges from 4 to 5 storeys and consists of 18 no. residential units (10 no. 1 bed and 8 no. 2 bed units).
- 183 no. long-stay and 63 no. short-stay bicycle parking space, 57 no. car parking spaces and 5 no. motorcycle parking spaces.
- 1,925 sqm of public open space and 3,140 sqm of communal open space.

- One signalised vehicular access is proposed via Collins Avenue and Collins Avenue Extension.
- Provision of pedestrian and cyclist access at northern boundary to allow for future link via Shanowen Business Estate and the Shanowen Hall and Square
- Boundary treatments and planting, public lighting, site drainage works, internal road surfacing and footpath, ESB meter rooms, stores, bin and cycle storage, plant rooms, landscaping; and
- All ancillary site services and development works above and below ground.

The EPBD obliges specific forms of information and advice on energy performance to be provided to building purchasers, tenants and users. This information and advice provide consumers with information regarding the energy performance of a building and enables them to take this into consideration in any decisions on property transactions.

As part of the Directive, a Building Energy Rating (BER) certificate, which is effectively an energy label, will be required at the point of sale or rental of a building, or on completion of a new building. As such the Dwellings Energy Assessment Procedure (DEAP) was created a base procedure in which the BER can be calculated. The Dwelling Energy Assessment Procedure (DEAP), which is the Irish official procedure for calculating and assessing the energy performance of dwellings. The procedure takes account of the energy required for space heating, ventilation, water heating and lighting, less savings from energy generation technologies. For standardized occupancy, it calculates annual values of delivered energy consumption, primary energy consumption, carbon dioxide emissions and costs, both totals and per square meter of total floor area of the dwelling.

The report sets out to discuss options of methodologies in Energy Efficiency, Conservation and Renewable Technologies that will be employed in part or in combination with each other. The proposed techniques to be employed to achieve compliance with both the building regulations Part L (NZEB) and the local Strategic Environmental Plan (HC 12) are provided. One of the house types DEAP report is provided to demonstrate this, as an example.

Climate change is expected to have a wide-ranging impact on Ireland's environment. This document is intended to outline the energy strategy design approach and building regulation compliance criteria at planning stage for this residential development and takes account of The governments 'Climate Change Adaptation Strategy 2024' as well as the local authority 'Climate Action plan.'

This sustainability report outlines the schemes Climate Change Adaptation Design along with detailed energy efficiency approaches. This approach seeks to ensure that the development meets the principles of the Government's 'National Climate Change Policy', Local Area Development Plan with regard to Climate Change and Energy Efficiency and that it exceeds the requirements of the Building Regulations Part L and maximises the reduction in Carbon Dioxide (CO₂) emissions thus demonstrating the Client's commitment to Climate Change.

The sustainable design strategy will be to use robust, passive, cost-effective measures to create a more efficient and healthy environment within the planned spaces. By utilizing an integrated approach to design, planning, construction, and operation, the development provides an opportunity to create environmentally sound and energy efficient housing.

Sustainable development encourages the conservation of our precious natural resources. A whole life cycle approach to development management and planning will be used, as well as energy efficiency with a specific focus on reducing the carbon footprint, improving the environmental quality of the building spaces, material selection and use, waste management, water management and conservation, and enhancing the ecological value of the site.

2 BUILDING REGULATIONS PART L 2022 DWELLINGS

Compliance with Building Regulations Part L 2022 Dwellings is broken down into six distinct categories, known as Regulation 8; parts (a) to (f). A summary of each of these parts as listed in Technical Guidance Document L 2022 is provided below together with a description of what is required to demonstrate compliance and suggested routes to meeting the required standards.

2.1 REGULATION 8 PART (A)

The regulation requires that:

Providing that the energy performance of the building is such as to limit the calculated primary energy consumption and related carbon dioxide (CO₂) to that of a nearly zero energy building within the meaning of the Directive insofar as is reasonably practicable.

Part (a) is the overarching compliance target which stipulates the required overall reduction in energy consumption and carbon emissions for new dwellings.

This requires that the energy consumption and carbon emissions of every dwelling is assessed using the DEAP software and that reductions of 70% in energy consumption and 65% in carbon emissions are achieved. The baseline against which this reduction is to be measured is considered to be a dwelling which is constructed to perfectly comply with the 2005 version of Building Regulations Part L.

The ratio of the energy consumed by the proposed dwelling to a similar dwelling constructed to 2005 energy efficiency standards is referred to as the “Energy Performance Co-efficient”.

2.2 REGULATION 8 PART (B)

The regulation requires that:

Providing that, the nearly zero or very low amount of energy required is covered to a very significant extent by energy from renewable sources, including energy from renewable sources produced onsite or nearby;

This requires that all new dwellings are provided with a renewable energy source. The regulations state that 20% of the total energy consumed within the dwelling must be provided from renewable thermal sources (solar thermal, biomass, heat pumps) or renewable electrical sources (Photovoltaic, Micro-wind). In practical terms, for a multiple unit development, this requirement is usually met by incorporating PV panels at roof level, incorporating air source heat pump technology or by adding an element of biomass or micro-Combined Heat & Power (CHP) to a district heating scheme.

CHP run on oil or gas and in this development no fossil fuels sources are being used and therefore CHP is discounted as an option.

2.3 REGULATION 8 PART (C)

The regulation requires that:

Limiting heat loss and, where appropriate, availing of heat gain through the fabric of the building;

This requires that the fabric of the building is designed to minimise heat loss from the building and that the air permeability of the structure limits the unwanted passage of air into the building.

The aim for this development is to achieve low U-Values beyond Part L compliance. Target U-Values are set out below:

- Walls - 0.17 W/m².K
- Window - 1.1 W/m².K (solar fraction (g factor) of 0.65 or greater, Frame factor of 0.7 or better)
- Roof - 0.15 W/m².K
- Doors - 1.2 W/m².K (This is to include frame)
- Ground Floor slab - 0.13 W/m².K
- Thermal Bridging - Factor of 0.08, with junctions details to conform with “Limiting Thermal Bridging and Air Infiltration – Acceptable Construction Details”

The u-values of individual elements can be relaxed if required provided that compensatory measures are taken on other elements and that the overall area weighted u-value for the entire dwelling is the same as it would have been if all individual elements had complied.

The thermal bridging details of junctions in the envelope of the building (floor-wall; wall-window; wall-roof, etc) must also be designed and constructed in accordance with the guidance set out in Limiting Thermal Bridging and Air Infiltration – Acceptable Construction Details

2.4 AIR PERMEABILITY (AIR TIGHTNESS AGAINST INFILTRATION)

Every dwelling must also be subjected to an air pressure test to determine the air tightness. All dwellings must achieve an air tightness of less than 5m³/m²/hour when tested at 50 Pascals. In multiple dwelling developments with repeating apartment types, testing can be conducted on a representative sample of units in accordance with Table 1.5.4.3 of TGD Part L 2022 Dwellings.

This development is to be constructed with a high degree of air tightness to a possible value of **3 m³/m²/hr.** with a permeability test conducted post construction to demonstrate this level.

2.5 REGULATION 8 PARTS (D & E)

The regulation requires that:

Providing and commissioning energy efficient space and water heating systems with efficient heat sources and effective controls; Providing that all oil and gas fired boilers shall meet a minimum seasonal efficiency of 90%;

No Oil or gas boilers shall be used on this development. The heating controls on this development shall allow independent time control of the heating (2 zones for dwellings larger than 100m²) and hot water. Heating in each zone should also be controlled by room thermostats (in the case of heating) and cylinder stats (in the case of hot water).

2.6 REGULATION 8 PARTS (F)

The regulation requires that:

Providing to the dwelling owner sufficient information about the building, the fixed building services and their maintenance requirements so that the building can be operated in such a manner as to use no more fuel and energy than is reasonable.

This requires that information is provided to the dwelling owner which relates to the effective and efficient operation of the systems installed in that dwelling. Instructions on how to control the heating & hot water systems based on time and temperature requirements. Full demonstration shall be provided to each tenant on this social housing development and full maintenance and facilities management shall be provided to the tenants as part of development construction contract.

2.7 REQUIREMENTS FOR COMMON AREAS

Section 0.1.2.3 requires that:

Where a new dwelling forms part of a larger building, the guidance in this document applies to the individual dwelling, and the relevant guidance in Technical Guidance Document L - Conservation of Fuel and Energy – Buildings other than dwellings applies to the non-dwelling parts of the building

2.8 L2A & S.I NO 393 OF 2021 REGULATION 5 PART (F) – ELECTRIC VEHICLE CHARGING

The regulation requires that:

(a) A multi-unit building containing one, or more than one, dwelling that is new shall have installed ducting infrastructure (consisting of conduits for electrical cables) for each car parking space, to enable the subsequent installation of recharging points for electric vehicles where the parking space is:

(i) located inside the building concerned, or

(ii) is within the curtilage of the building concerned.

(c) A new building that is a dwelling, other than where the dwelling forms part of a multi-unit building, where a parking space is located within the curtilage of the dwelling, shall have installed appropriate electric vehicle recharging infrastructure to enable the subsequent installation of recharging points for electric vehicles.

This requires that ducting provision for the future installation of car charging point be made in all carparks with more than 10 parking spaces associated with multi-unit residential buildings. It also requires that individual / own-door dwellings which have on curtilage parking are provided with ducting infrastructure to allow the future installation of e-car charging.

In terms of this development this would mean ducting to ALL CARPARK SPACES for future EV charging connections in line with the development plan.

3 DCC DEVELOPMENT PLAN OBJECTIVES & POLICIES

Chapter 3 of The Dublin City Development Plan 2022-2028 sets out a number of policies in relation to energy in use in proposed developments and the potential use of district heating / waste heat networks. The policies relevant to this proposed development are set out below and are addressed in following chapters of this report.

3.1 CA10 CLIMATE ACTION ENERGY STATEMENTS

All new developments involving 30 residential units and/or more than 1,000 sq. m. of commercial floor space, or as otherwise required by the Planning Authority, will be required to submit a **Climate Action Energy Statement** as part of the overall Design Statement to demonstrate how low carbon energy and heating solutions, have been considered as part of the overall design and planning of the proposed development.

3.2 CA15 WASTE HEAT, DISTRICT HEATING AND DECENTRALISED ENERGY

To actively encourage the development of low carbon and highly efficient district heating and decentralized energy systems across the city utilising low carbon heat sources such as renewable energy and waste heat recovery and to promote the connection of new developments to district heating networks where such systems exist/can be developed in a given area.

3.3 CA17 SUPPORTING THE POTENTIAL OF DISTRICT HEATING IN DUBLIN CITY

To support the potential of district heating in Dublin City, all Climate Action Energy Statements submitted to the Council (see Policy CA10) shall include an assessment of the technical, environmental and economic feasibility of district or block heating or cooling, particularly where it is based entirely, or partially on energy from renewable and waste heat sources.

In addition:

- Climate Action Energy Statements for significant new residential and commercial developments in Strategic Development and Regeneration Areas (SDRAs), will assess the feasibility of making the development 'district heating enabled' in order to facilitate a connection to an available or developing district heating network in the area.
- Climate Action Energy Statements for significant new residential and commercial developments in the Docklands SDRA will assess the feasibility of making the development 'district heating enabled' in order to facilitate a connection to the Dublin District Heating System.

3.4 DEVELOPMENT PLAN - CHAPTER 15

In addition to the specific policies set out above from Chapter 3 of the development plan, Chapter 15 provide further guidance regarding the use of district heating networks.

Development Plan 15.7.3 - Climate Action and Energy Statement

In order to comply with the policies set out in Section 3.5.2 'The Built Environment' and Section 3.5.3 'Energy' of Chapter 3, proposals for all new developments in excess of 30 or more residential units or 1,000 sq. m. or more of commercial floor space, or as or as otherwise required by the Planning Authority, will be required to include a Climate Action Energy Statement.

The purpose of this statement is to demonstrate how low carbon and low energy heating solutions have been considered as part of the overall design and planning of the proposed development. Having regard to the above, the statement, which shall be prepared by a certified engineer, shall address:

- the technical, environmental and economic feasibility of on-site renewable energy generation including solar PV and small scale wind power
- the technical, environmental and economic feasibility of at a minimum, the following high-efficiency alternative energy supply and heating systems
- decentralised energy supply systems based on energy from renewable and waste heat sources
- co-generation (combined heat and power)
- district or block heating or cooling, particularly where it is based entirely or partially on energy from renewable and waste heat sources
- heat pumps
- include an assessment of embodied energy impacts

3.5 DEVELOPMENT PLAN 15.7.3.1 - DISTRICT HEATING ENABLED' DEVELOPMENT

In addition to the requirements set out above, Climate Action Energy Statements for significant new residential and commercial developments in SDRAs, will be required to investigate local heat sources and networks, and, where feasible, to demonstrate that the proposed development will be 'District Heating Enabled' in order to facilitate a connection to an available or developing district heating network.

This proposed development is within this zone and, as such, the requirement to conduct the feasibility assessment outlined above shall apply to this site. Any such investigation should have regard to the heat demand density of the area in which the proposed development is located.

Where it is not feasible for a development to be district heat enabled, the statement must provide a clear explanation as to why this is would not be the case, and must also demonstrate that the proposed development offers a similarly efficient and low carbon energy and heating solution.

For the avoidance of doubt, for a development to be 'District Heating Enabled', it should incorporate an efficient, low carbon building heat network, and/or a block communal heating network, in order to facilitate a future connection to a district heating network, without the need for significant additional retrofitting.

To this end, 'DH Enabled' development should provide for:

- an efficient, centralised, wet-based heat network within the building or within the area of the development as a whole (as appropriate);

- the allocation of sufficient space in plant rooms to accommodate suitable district heating equipment, such as heat exchangers etc.;
- the provision and safeguarding of suitable pipe routes throughout the building and complex;
- the provision and safeguarding of suitable district heating network connection routes at and beyond the site boundary

4 Building Fabric

Before considering efficient building services or renewable energy systems, the form and fabric of a building must be assessed and optimised so as to reduce the energy demand for heating, lighting and ventilation. Target performance levels have been identified by the design team and are presented below in Table 4.1.

4.1 ELEMENTAL U-VALUES

The U-Value of a building element is a measure of the amount of heat energy that will pass through the constituent element of the building envelope. Increasing the insulation levels in each element will reduce the heat lost during the heating season and this in turn will reduce the consumption of fuel and the associated carbon emissions and operating costs.

It is the intention of the design team to exceed the requirements of the building regulations. Target U-Values are identified below.

- Walls - 0.17 W/m².K
- Window - 1.1 W/m².K (solar fraction (g factor) of 0.65 or greater, Frame factor of 0.7 or better)
- Roof - 0.15 W/m².K
- Doors - 1.2 W/m².K (This is to include frame)
- Ground Floor slab - 0.13 W/m².K
- Thermal Bridging - Factor of 0.08, with junctions details to conform with “Limiting Thermal Bridging and Air Infiltration – Acceptable Construction Details”

4.2 AIR PERMEABILITY

A major consideration in reducing the heat losses in a building is the air infiltration. This essentially relates to the ingress of cold outdoor air into the building and the corresponding displacement of the heated internal air. This incoming cold air must be heated if comfort conditions are to be maintained. In a traditionally constructed building, infiltration can account for 30 to 40 percent of the total heat loss, however construction standards continue to improve in this area.

With good design and strict on-site control of building techniques, infiltration losses can be significantly reduced, resulting in equivalent savings in energy consumption, emissions and running costs.

In order to ensure that a sufficient level of air tightness is achieved, air permeability testing will be specified in tender documents, with the responsibility being placed on the main contractor to carry out testing and achieve the targets identified in the tender documents.

A design air permeability target of 3 m³/m²/hr has been identified for the dwellings on the site. This performance level is a 40% improvement on the target of 5 m³/m²/hr identified in TGD Part L 2022.

The air permeability testing will be carried out in accordance with IS EN 9972:2015 ‘Thermal Performance of Buildings’ and CIBSE TM23: 2000 ‘Testing buildings for air leakage.

4.3 THERMAL BRIDGING

Thermal bridges occur at junctions between planar elements of the building fabric and are typically defined as areas where heat can escape from the building fabric due to a lack of continuity of the insulation in the adjoining elements.

Careful design and detailing of the manner in which insulation is installed at these junctions can reduce the rate at which the heat escapes. Standard good practice details are available and are known as Acceptable Construction Details (ACDs). Adherence to these details is known to reduce the rate at which heat is lost.

The rate at which heat is lost is quantified by the Thermal Bridging Factor of the dwelling and measured in W/m²K. The Thermal Bridging Factor is used in the overall dwelling Part L calculation, this value can be entered in three different ways:

0.15W/m²K Used where the ACDs are not adhered to

0.08W/m²K Used where the ACDs are fully adhered to

< 0.08 W/m²K Used where the thermal details are thermally modelled and considered to perform better than the ACDs

It is intended that the ACDs will be adhered where suitable benchmarks exist and/or that thermal modelling will be carried out for any non-standard junction details within proposed development

5 HEAT SOURCES & RENEWABLE ENERGY OPTIONS

As set out in Section 2 of this report, Part L of the building regulations requires that all new residential buildings must meet overall energy performance levels (as defined by the Energy Performance Coefficient - EPC) and must have a portion of their annual energy demand provided by renewable energy sources.

The renewable energy source can be thermal energy such as solar thermal collection, biomass boilers or heat pumps or it can be electrical energy as generated by photovoltaic solar panels or wind turbines. The minimum renewable energy contributions defined in Part L 2022 Part (b) is 20% of the total energy consumption for the dwelling.

In order to comply with the requirements of the Development Plan, a detailed feasibility assessment has been carried by Semple McKillop to investigate the options available to meet the heating and hot water demands of the site and to assess the feasibility of (a) implementing a district heating solution or (b) delivering a site which is “district heating enabled”.

A combination of the systems below can be used to deliver, heating, hot water, ventilation and electrical energy to this development.

A description of the systems considered within the study are summarized below:

5.1 OPTION 1 - CONNECTION TO A THIRD-PARTY OFF-SITE DISTRICT HEATING NETWORK

This approach would involve the installation district heating pipework throughout the scheme to distribute the heat generated by a third-party off-site district heating network. Each apartment would be served via a heat interface unit (HIU). The HIU will both control and meter the consumption of heat and hot water within each individual dwelling allowing occupants to set the times they need space heating and ensuring they are charged accordingly.

The source of heat for the third-party district heating network could be waste heat from nearby commercial or industrial systems such as data centres, or from municipal geothermal heat sources.

5.2 OPTION 2 - ON-SITE DISTRICT HEATING

This approach would involve the generation of heat in a central location on the site and the distribution of this heat to each unit via a network district heating pipework. The central plant used to generate the heat could include either Air Source Heat Pumps or Ground Sourced Heat pumps

The large Air Source Heat Pumps (ASHPs) operate in the same manner as the smaller units incorporated in houses or apartments but at a larger scale. They utilise grid supplied electricity to extract thermal energy from a heat source, in this case, the ambient air. While the electricity consumed is not renewable energy, the efficiency at which a heat pump operates allows a significant portion of the heat delivered be considered as renewable. Typically, approximately 40% to 50% of the heat supplied is considered to be renewable energy.



Typical District heating Air Source HP arrangement

Heating pipework will be installed throughout the scheme to distribute the heat generated in the plant room throughout the apartment development, serving each apartment via a heat interface unit (HIU). The HIU will both control and meter the consumption of heat and hot water within each individual dwelling allowing occupants to set the times they need space heating and ensuring they are charged accordingly.

5.3 OPTION 3 –EXHAUST AIR HEAT PUMPS

Exhaust Air heat pumps (EAHPs) operate in a very similar manner to the more conventional air source heat pumps and utilise grid supplied electricity to extract thermal energy from a heat source, in this case, the internal air within the apartment. The internal air is extracted from kitchens and wet rooms and is drawn into the heat pump via ductwork in the ceiling void. The heat pump extracts heat from this air before expelling it from the apartment.

As noted in Section 4.2 above, the electricity consumed is not renewable energy but the efficiency at which a heat pump operates allows a significant portion of the heat delivered to the dwelling be considered as renewable.

There are a number of manufacturers offering products of this type and the certified seasonal efficiencies of some models can exceed 450% in heating mode and 170% to 190% in hot water mode. These efficiencies can deliver Part L 2022 compliance in most circumstances but in some instances may need supplementary PV panels in order to meet the required energy targets.

There is no requirement for a separate Mechanical Extract Ventilation (MEV) systems when an exhaust air heat pump is used as the heat pump draws the air from all wet rooms in the same manner as an MEV system would. The fan will run continuously to ensure that the minimum ventilation rates are maintained and the supply air to the dwelling is provided through trickle vents in each habitable room.

5.4 OPTION 4— SMART ELECTRIC SYSTEM

Smart electric radiators would be provided in all spaces to provide the space heating to each apartment which provides an individual apartment heating solution, with heat losses being very small in new apartments this can be an effective solution although slightly higher running costs than heat pumps.

Hot water is provided by an internal domestic hot water heat pump with a 160mm diameter ducted supply air intake to a packaged unit. The end User can have a fully connected system with WIFI control via Control App.

A separate MVHR Heat Recovery Ventilation unit would be required for this solution to provide the mechanical ventilation - stale air is extracted from the wet rooms and kitchen areas of each apartment and supply clean air to occupied rooms.



Typical smart electric system.

5.5 OPTION 5 – ADDITIONAL SOLAR PV



In addition to one of the systems above, Solar PV panels may be employed to contribute to the electrical energy source for each unit.

Typical *Photovoltaic* Arrangement

Use of energy efficient technologies Heat pumps, solar thermal panels, photovoltaics (PV) and Mechanical heat recovery ventilation or Demand control ventilation have been considered. In addition, temperature and zone controls will be used to reduce fuel and electricity demand.

Once the energy consumption has been reduced, a portion of the remaining electrical and thermal (hot water + heating) demand will be met by renewable sources. Not all renewables may be suitable to employ but it is intended to evaluate effectiveness of technologies such as heat pumps, solar panels and onsite generation from or photovoltaic panels.

Solar and Photovoltaic panels are apt due to the unobstructed southerly and south easterly elevations. PV is particularly suitable due to a simultaneous requirement for heating, hot water and electrical demand. The on-site generation of electricity will supplement the electrical requirement for lighting, motors, etc & reduce the electrical demand and from the grid.

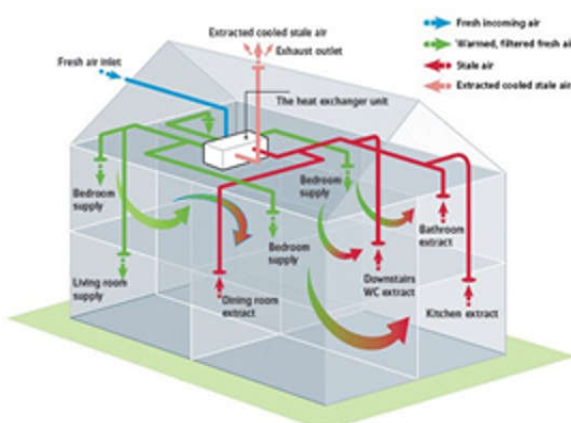
Applying this to each unit would considerably reduce the demand from the grid and consequently reduce losses and emissions from power stations. Such is the benefit of on site or distributed generation, the DEAP model determines that each kWh offset from PV equates to 2.5 times the thermal equivalent.

The Housing units do not require solar PV to comply with Part L when ASHP is employed. Solar PV may also be used for Landlord Part L compliance.

5.6 OPTION 6- MECHANICAL VENTILATION HEAT RECOVERY (MVHR) SYSTEM OR DEMAND CONTROL VENTILATION

In our design strategy we shall consider mechanical ventilation from wet areas e.g. toilets, utility rooms in accordance with Part F, with supply air provided to habitable spaces (bedrooms, circulation and living spaces).

See Figure 6 for a typical type arrangement of Heat recovery ventilation which provides a continuous supply of fresh air to the dwelling through special air valves or grilles located in each habitable room thereby eliminating the number of opening required in the structure.



Typical Mechanical Ventilation Heat Recovery (MVHR) Arrangement

Continuous extract is also provided with the outgoing stale air and from wet areas with the exhausted air preheating the incoming fresh air via a heat exchanger in the unit 90% of the heat can be recovered through this process that would otherwise be wasted.

While MVHR would have the effect of reducing the energy demand (or increasing the energy efficiency) of each unit, renewable technologies such as heat pumps, solar thermal and solar PV offset would offset this demand.



The alternative of demand control ventilation provides a lower cost solution with much less maintenance cost associated on a yearly basis. The MHRV system requires the filters in the system to be cleaned or changed on an annual basis not only to keep the system operating but also to maintain efficiency in the system. If the air tightness of the development is less than 4 m3/m2/hr then heat recovery ventilation or demand control system will be required to be employed. We would propose to review both options through Stage i design looking at the overall energy performance of the units in terms of fabric U-Values, air tightness, heat recovery/Demand control ventilation and renewable options to provide the most economical solution with the best life cycle costs.

Demand controlled MEV system consumes only slightly more energy – 1070 kWh – per heating period than an 80% heat recovery system. The corresponding extra cost, €47, is much smaller than the cost of the annual filter changes necessary to maintain the level of performance of HR units (see graph 1 below).

Heat recovery or Demand Control ventilation maybe used for this development.

5.7 OPTION 7 - LIGHTING

All lighting to be energy efficient with provision made for low energy lamps such as LED which use 80% less electricity and last up to 10 times longer than ordinary light-bulbs in the dwellings.

	Traditional Incandescent	Eco-Halogen	CFL	LED
				
Power Consumption	60W	42W	13W	6W
Brightness	700 lumens= 60W	625 lumens= 54W	741 lumens= 60W	500 lumens= 60W
Energy Efficiency*	E	D	A	A+
Lifespan	1,000hrs = 1 year	2,000hrs = 2 year	10,000hrs = 10 year	30,000hrs = 30 year
Cost per Bulb	1	3	3.5	9.45
Yearly Running Cost	10.8	7.56	2.34	1.08
15 year Lifetime Cost	Yearly Running Cost + 15 Bulbs = €177	Yearly Running Cost + 7.5 Bulbs = €135.90	Yearly Running Cost + 1.5 Bulbs = €40.35	Yearly Running Cost + 1 Bulb = €25.65

* All calculations are based on 1,000 hours per year at €0.18 per kWh

* A+ = Most Efficient, G = Least Efficient

Table 1: Home Bulb Options

As detailed in Table 1 LED lighting consumes the least amount of power to achieve the required lighting levels. Combined with a long lifespan this minimises whole life costs and reduces the carbon footprint of each home.

6 EV (ELECTRIC VEHICLE) CHARGING COMPLIANCE

6.1 REGULATIONS

In accordance with Building Regulations Technical Guidance Document L 2021 Conservation of Fuel and Energy – Dwellings, the current policy on EV charging states in regulation 5 Part (f)

“(f) A new building (containing one, or more than one, dwelling), which has more than 10 car parking spaces, shall have installed ducting infrastructure (consisting of conduits for electric cables) for each car parking space to enable the subsequent installation of recharging points for electric vehicles.”

In terms of this development this would mean ducting to ALL CARPARK SPACES for future EV charging connections in line with the development plan.

6.2 PUBLIC STREET PARKING PROPOSAL

In this development curtilage parking is not available, the approach is a public network that is installed and managed through a specialist EV charging company such as “Easygo” www.easygo.ie Or ecar www.esb.ie/what-we-do/ecars

The management company can manage the infrastructure and operate it as a public network rather than a resident network.

The resident will sign up with the EV charging company and have an account with them and pay for charging their car.

The proposal for this development is that 50% all public spaces will have EV chargers installed in line with DCC development plan and the rest will ducted for future EV charging points.

7 EMBODIED CARBON ASSESSMENT

The Climate Action Energy Plan should also include an assessment of the embodied carbon impacts of a proposed low energy heating solutions proposed.

The calculation and assessment of the embodied carbon of various aspects of the a building's fabric and structure have become more common in recent years, there are less well established methods for assessing the embodied carbon of mechanical and electrical systems within buildings. This is primarily due to the difficulty in determining the embodied carbon in items of plant or equipment, which themselves are often constructed from numerous other sub-components.

CIBSE TM65 has been published by the Chartered Institute of Building Services Engineers in an attempt to address this, however even within this document it is noted that the assessment of embodied carbon for mechanical and electrical building services is very difficult.

The approach proposed within CIBSE TM65 is based on 3 possible metrics, in order of preference (and accuracy) these are:

1. Environmental Product Declarations (EPDs)
2. Manufacturer Form Section A & B (allowing "mid-level" calculation)
3. Manufacturer Form Section A only (allowing "basic" calculation)

However, as this approach is relatively new (TM65 was first published in 2021) few manufacturers of equipment have yet implemented the use of EPDs and use of Manufacturer Forms is also in it's infancy, meaning that there is little information available.

At planning stage of a project, no decisions have yet been made on the specific equipment suppliers or manufacturers so there is no means of having "Manufacturer Forms" completed. Therefore, as illustrated in Figure 4.2 in TM65 (reproduced below) it is not possible to carry out any calculations on embodied carbon for the systems being considered.

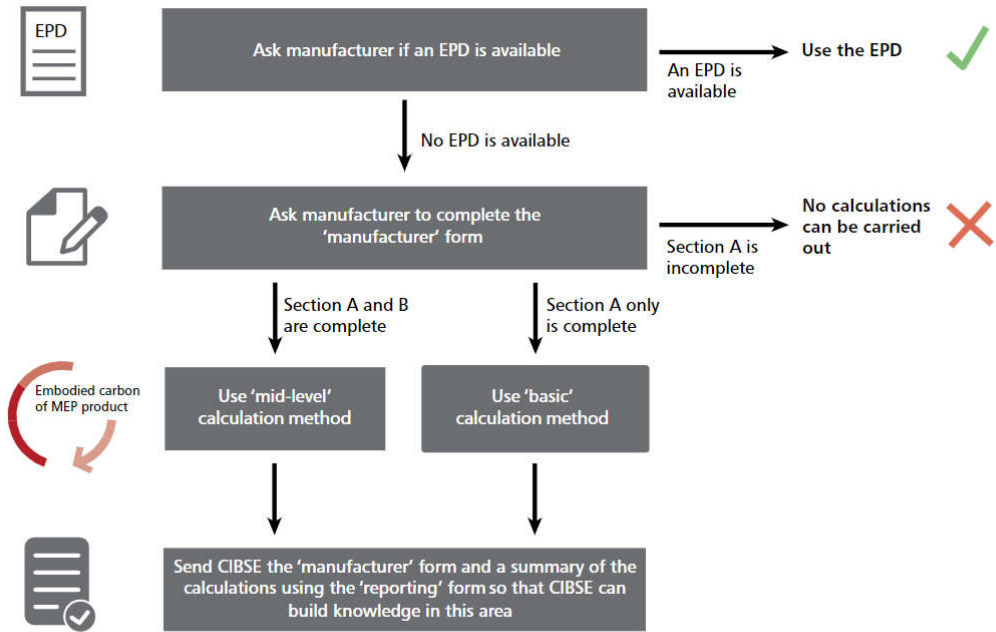


Figure 4.2 Steps taken to understand the embodied carbon impact of a MEP product

8 STUDY FINDINGS

The preceding sections of this report set out the regulatory requirements with which the scheme will have to comply while identifying a number of technologies and design approaches that may be utilised to achieve compliance.

Option 1 offer the best performance in terms of carbon emissions and running costs and is expected to have capital costs that are in line with the most cost effective alternative solutions. However as there are no known third-party off-site district heating networks available for connection to the site at this stage this option must be discounted.

Option 2 is the only proposed solution that enables future connection to a third party off-site district heating network involves the use of an on-site district heating system utilising only air source heat pumps. The analysis shows that Option 2 will have a higher running costs than the individual system and will have higher carbon emissions than the individual system unless the third-party network is available within 21 years of occupancy. The capital costs for Option 2 are also 17% higher than those for alternative systems. This is a viable option for sites that anticipate a future third party district heating system in the medium term.

Option 3 involves the use of individual heat pumps within each residential unit. This option is seen to have the lower carbon emissions than Option 2 if the third-party off-site network does not become available within 21 years respectively. It is also shown to have lower running costs from the outset. It is for this reason that Option 3 has been identified as a good option for the site, both in terms of carbon performance and economic feasibility.

Option 4 involves the use of individual smart electric radiators for heating and a hot water heat pump for hot water within each residential unit. This option is suited to units that have a small heat loss, those with limited external fabric losses and a small floor area. Option 4 has been identified as a good option for the units on site that meet this criteria. It has good results both in terms of carbon performance and is seen as the most economic solution.

Option 5 – Solar PV is not a solution on its own for any unit but may be used as a supplement to provide on site electrical energy generation. Considering the base energy for heating and hot water is imported electrical energy, this is a good option to be added to any of the options above to reduce imported energy and provide a low carbon energy source.

Option 6 – MHRV and demand control ventilation both provide a fresh environment in the units. The continuous running fan of the MVHR considered against the heat recovery of energy saved and the additional maintenance costs associated with MVHR balances out the two systems so that either system provides a good option for meeting Part F of the building regulations.

Option 7 – LED lighting is now accepted as the only solution for lighting within a domestic situation and shall be part of this delivered scheme.

9 RECOMMENDATIONS

We are proposing for this development the following means of heating, hot water, lighting and renewable energy.

1. U-Values as stated in section 4.1 and Air tightness as per section 4.2
2. Apartment units to have District heating system from commercial Air sourced heat pump or exhaust air heat pump or Smart Electric heating.
3. Apartments to have Hot water from Heat interface units from the district heating system or through exhaust air heat pump or hot water heat pumps.
4. Demand control ventilation system or MHRV to be utilised.
5. LED lighting throughout.
6. All public spaces to have ducting for future EV charging point in accordance with Part L.
7. Potential Solar PV panels for on site generation for some units and or Landlord systems

Whilst the Energy Strategy for the site has yet to be finalised, as ultimately the PPP Company will develop their own proposals for the site, the report does provide output specification to set parameters to be achieved and details some systems that will not be allowed. In line with reducing fossil fuels there will be no fossil fuels (Gas or Oil) on the site in line with the Governments 'Climate Action Plan 2024'.

10 CLIMATE CHANGE SUSTAINABLE STRATEGY

The sustainable strategy will try to include economic and environmental measures that are appropriate. In this regard, the following factors will be taken into account:

- Using the principles of Energy Efficient Design (EED) to reduce the amount of energy used by buildings during their operational phase.
- Making the most of passive design features like the building facade to take advantage of the constraints and orientation of the site. Using fabric u-values that are higher than Part L 2019 and provide a high air permeability rate.
- Energy efficiency will be incorporated into each part of the design including;
 - Construction: Applying considerate construction principles to control energy, water, and other resource use during the on-site phase.
 - Utilizing the extensive metering and controls equipment designed to meet the principles of CIBSE TM 39 – Building Energy Metering, the commissioning phase establishes the appropriate targets for the operational phase based on the energy and water consumption. Utilization of a Commissioning Manager to coordinate and guarantee the installation and operation of all energy-related systems are in accordance with the design.
 - Operation – Confirmation that EED's guiding principles have been adhered to.
- Façade studies with the architect using computer modelling techniques to get the most out of daylight, natural ventilation, and solar benefits that are unique to the site. This will make sure that the buildings have the best air quality and daylight.
- Implementing reuse and recycling throughout the design, construction, and operation phases of the project to ensure the reduction of waste sent to a landfill.
- An integrated Water Management and Conservation Plan that includes efficient sanitary appliances (such as low-water WC cisterns & taps) and equipment with low water consumption to ensure minimal use of potable water.
- Utilizing Dynamic Thermal and Energy Simulation methods to validate a low-energy and low-carbon building design. Natural ventilation principles, and compliance with Part L of the Building Regulations regarding the effects of overheating will be implemented and checked. Using the 2020 CIBSE-accredited weather file, the spaces will also be examined for the effects of climate change, and compliance with the requirements will be confirmed.
- Plants and M&E systems that use less energy, like energy-efficient LED lighting fixtures, heating plants, Triple E-registered products that reduces energy use to a minimum.
- Focusing on natural daylighting factors that meet BRE and CIBSE recommendations. The presence of sufficient natural light contributes to the well-being of the occupants and creates a positive living environment. The use of natural light will be maximized by acceptable levels of glazing on the elevations, which will improve the comfort of the building occupants. High-performance glazing will allow building occupants to take advantage of the benefits of the glazed views while preserving the buildings' thermal performance.
- Using renewable technologies in accordance with Sustainable Design and Climate Action based on optimal technical and financial considerations that will offset primary energy consumption and reduce carbon footprint. Incorporating the aforementioned design measures to achieve a target of an "A" rating for the buildings and maximize

the building energy ratings (BER). This will demonstrate that the buildings were built to be energy efficient and give users a sense of certainty about how much energy they use and how much carbon they produce.

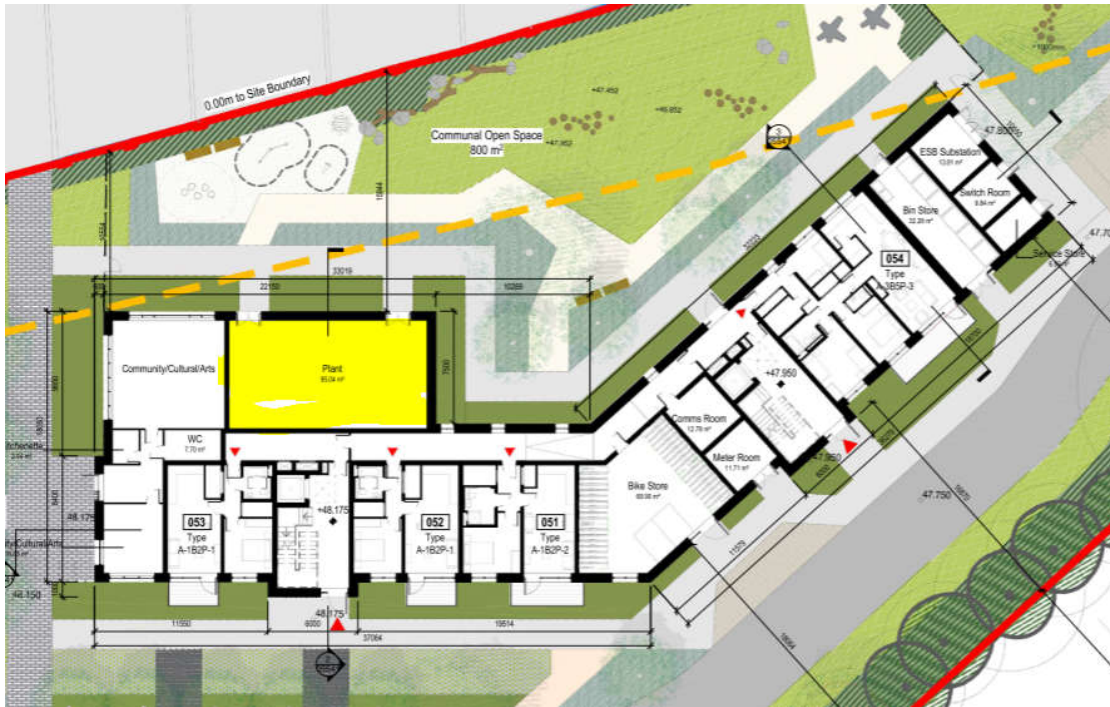
- A sustainable approach will be extended from the building to the site throughout the construction and handover process.
- Reviewing the building's materials throughout their entire life cycle, paying particular attention to how they affect carbon emissions.
- Utilizing the principles of environmental assessment methodologies during the design and construction phases to guarantee that the buildings are developed holistically.

11 APPENDIX A - INFORMATION REQUIREMENTS FOR DISTRICT HEATING ENABLED DEVELOPMENTS

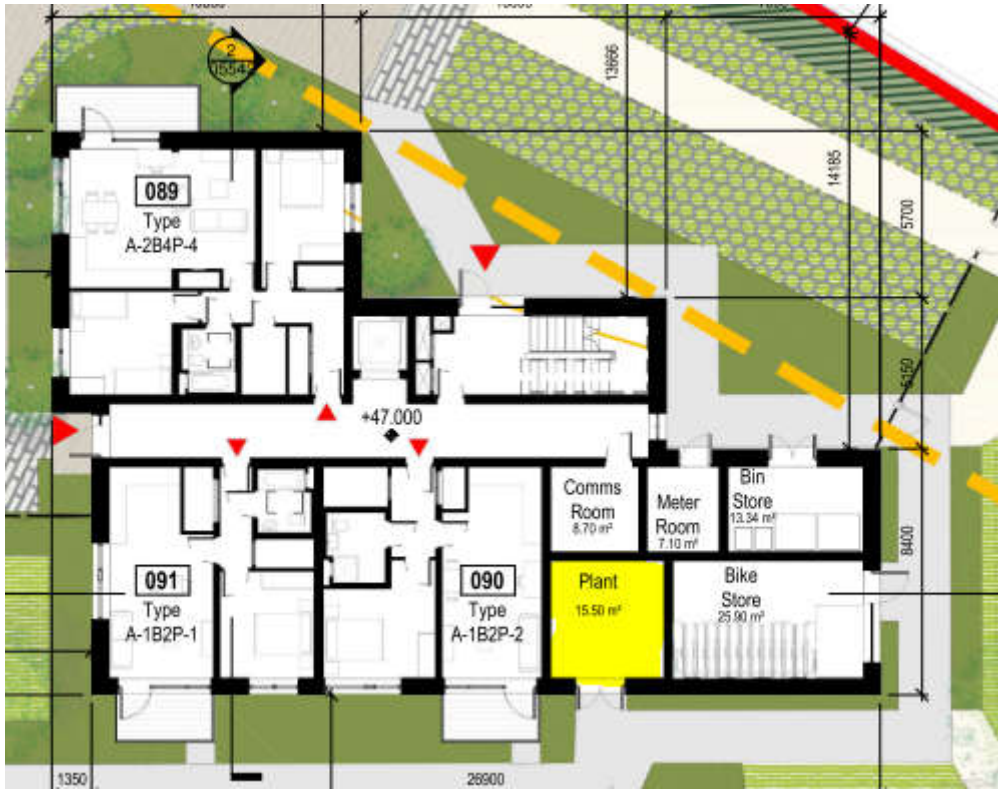
Heat Demand Information	
Required Peak Heat Demand (kW)- Heating and Hot Water	985.8
Estimated Annual Heat Consumption (MWh pa) - Heating and hot water	339.2
Estimated Seasonal Base Load (kW) Hot water	739.35
Gross Floor Area m ²	11299
Heat Demand per m2 GFA (w/M ²) - Heating only	22
Heat Consumption per m2 GFA (kWh/m ²) - Heating only	9.3
Number of Residential Dwellings	106
Number of Boilers and their heat outputs	None
Secondary Side Design Conditions	
Flow Temperature (max at peak) °C	55
Flow Temperature (min in Summer) °C	55
Return Temperature 0C 45	45
Maximum Design Working Pressure, bar G	3
Pressure Drop Through Heat Exchange, Kpa -	Unknown - Detailed design
Plant Room Details	
Number of Heat Exchangers Proposed – Unknown - Detailed design	Unknown - Detailed design
Size of Skids (L x W x H), m - Unknown - Detailed design	Unknown - Detailed design
Size of Plant Room (L x W x H), m	12 X 9.5 x 2.8 – Block A Ground Floor -112 sq m 12.5 x 7.5 x 2.8 – Block B 95 sq m 4 x 3.8 x 2.8 – Block C – 15.5 sq m
Location of Plant Room (attach sketch)	See below
Access Details (attach sketch) –	Stairs, lift, walkway (See below)
Other Comments	
<i>Table 1 – From DCC CDP Ch. 15 - Table 15-3: Information Requirements for District Heating Enabled Developments</i>	



Block A Ground Floor



Block B Ground Floor



Block C – Ground floor

12 APPENDIX B - CLIMATE ACTION AND ENERGY STATEMENT

Heating System Information

Item[1]	Option 1	Option 2	Option 3
Centralised	ASHP	GSHP	
Decentralised			Exhaust air heat pump
Community DH Network	Yes	Yes	No
Local DH Network			
Total Life Cycle Costs	€ 3,265,606	€ 3,945,744	€ 1,718,967
Cap-Ex.[2]	€ 2,703,000	€ 3,275,400	€ 1,325,000
Maintenance	€ 19,080	€ 26,500	€ 17,490
Operational[3]	€ 56,986	€ 54,272	€ 45,227
Replacement Costs[4] - 15 years	€ 486,540	€ 589,572	€ 331,250
Energy Costs			
Annual Space Heating (kWh/m ²)	4.9	4.7	3.9
Annual Space Heating (kWh)	55,205	52,576	43,813
Annual Water Heating (kWh/m ²)	16	15	13
Annual Water Heating (kWh)	178,080	169,600	141,333
Peak heat demand (kW)	1242.108	1182.96	985.8
CO ₂ Emissions	24767	22644	18870
BER / DEC	A2	A2	A2
Air Quality	Good	Good	Good
Additional			
Fuel/heat production mix assumed	100% Heat pump	100% Heat pump	100% Heat pump
Carbon factors used	254.8	254.8	254.8
Assumed efficiencies - heat production units	2.4	2.5	2.5
Assumed efficiencies - heat losses of network	20% losses	20% losses	0%

[1] For options that examine district or communal heating networks, pipe network route and trench lengths should be provided

[2] Incl. network costs, heat production costs, and electricity grid connection costs

[3] Incl. heat production costs (efficiencies, electricity prices -impact of day and night etc.)

[4] Assumptions about lifespan of different technology options e.g. 12-15 year for heat pumps vs 50 years for district heat networks - i.e. how often the replacement costs occur

Development Use Type Information

Use Type (e.g. residential, office, retail)	Floor Area (m ²) or No. of Units (e.g. flats, hotel rooms)
Social Housing	106 units
Community	2 units
Total	

Electricity System Information

Building Footprint (m2)	11,299 sq m
Electricity Demand (kWh/year)	245213
Peak Electricity Demand (kW)	783
On-site Electricity Production (e.g. PV)	Solar PV
Electricity Production Capacity (kW)	84.8
Electricity Production (kWh/year)	72080

Cooling System Information (if applicable)

Cooling Demand (kWh/year)	0
Cooling Capacity (kW)	0
Cooling Production Plant (e.g. Electric Chiller)	0
Cooling System (e.g. Chilled Beams, Fan Coil)	0
Cooling Plant Efficiency (%)	0

Electric Vehicle Charging (if applicable)

Charger Type	No. of Charging Points	Total Rated Capacity (kW)
11 KW Dual Chargers	29	319