
ASBESTOS DEMOLITION SURVEY REPORT



Of

Collins Avenue Depot

Collins Avenue

Dublin 9

On behalf of

Malone O Regan Consulting Engineers



5c Fingal Bay Business Park,
Harry Reynolds Road,
Balbriggan, Co. Dublin
Tel: (01) 6905907
Fax: (01) 8020439
Email: info@ohss.ie
Website: www.ohss.ie



Project Number
39361

DOCUMENT CONTROL

Client	Malone O Regan Consulting Engineers	
Project Title	39361 NDFA Project Collins Avenue Depot	
Document Title	Asbestos Demolition Report	
Report No.	39361	

Rev	Status	Author(s)	Revision History	Approved By	Issue Date
D01	Final	 Anthony Scullion	Initial Release to Client	 Paul Foran	16/01/24

Contents

1. Executive summary
2. Scope of the project
3. General site and survey information
4. Conclusions and actions
5. Survey results

1 EXECUTIVE SUMMARY

OHSS carried out an asbestos survey to HSG264 requirements for the purposes of identifying asbestos containing materials in the premises(s) prior to planned demolition. It should be noted that this survey only includes areas within the scope of the survey and should not be read as an extensive assessment of all possible asbestos containing materials (ACMs) in the premises.

The findings of this survey are contained within the summary tables and risk assessment in the results section of this report.

Bitumen adhesive

- First floor in the office building above the kitchen and changing areas. All floor areas on the 1st floor. Any vinyl floor tiles/carpet stuck to the bitumen adhesive is also deemed to be contaminated and to be treated as asbestos waste.

Areas presumed to contain ACMs

- Toilet Cistern in Ladies toilet
- Fume cabinet in Garage (not accessed)
- Electrical panel in welding workshop and store

The survey undertaken complies with the company's legal duty to identify the presence of asbestos containing materials and carryout a risk assessment in respect of these materials at the premises. The risk assessment will form part of the overall safety management system for the contractor carrying out any asbestos removal works. The results of the risk assessment must be communicated to the employees and made available to them. This report may be used by the Project Supervisor for Design Process and the designers to highlight the presence of asbestos containing materials found in the buildings.

While every effort has been taken to ensure the accuracy of this report OHSS do not accept responsibility for any omissions or areas of the building not addressed in the report. This report is intended to assist in reducing the possibility of accidents and ill health by bringing to the client's attention identified asbestos containing materials. Within the constraints of time and resources every effort has been made to identify ACM's. It is not implied that all other hazards are under control at the time of inspections.



Project Number: 39361

THIS REPORT SHOULD BE READ IN ITS ENTIRETY AND SHALL NOT BE REPRODUCED EXCEPT IN FULL WITHOUT THE APPROVAL OF OHSS AND THE CLIENT.

Questions arising from the survey report should be directed, in the first instance, to the author of this report, who will clarify any technical issues raised.

Further information on previous surveys should be sought from the client.

1.1.1 ABBREVIATIONS

Throughout the report the following terms and abbreviations may be used:

ACM	Asbestos containing material.
AND	Asbestos not detected.
MMMF	This describes any machine made mineral fibre, fibreglass, Rockwool, ceramic fibres and other such material.
MA	Material Assessment Score as defined in HSG264 relates to the friability of the product. It is used to indicate the level of risk posed by the product
AIB	Asbestos Insulating Board.
AC	Asbestos Cement
Chrysotile	Commonly known as white asbestos.
Amosite	Commonly known as brown asbestos.
Crocidolite	Commonly known as blue asbestos.
Amphibole	Generic name for all asbestos types, excluding Chrysotile.
BOHS	British Occupational Hygiene Society
UKAS	United Kingdom Accreditation Service

2 SCOPE OF WORK

2.1 GENERAL

The scope of the survey included;

OHSS requested to carry out a fully intrusive survey to identify any ACMs in accessible areas

The purpose of the survey is to identify and risk assess asbestos containing materials (ACM's) in the premises or area where planned demolition works are to take place. The survey aims to provide sufficient information for designers and the project supervisor for design process to take account of identified asbestos risks. The design team must take account of known locations where ACM's are identified and plan to eliminate the risk or prevent exposure to asbestos during the construction phase. Asbestos is a particular risk within the definitions of "particular risk" in the Safety Health and Welfare at Work (Constructions) Regulations 2013 and should be highlighted in the design risk assessments accompanying the Preliminary Safety and Health Plan.

The surveyor undertook as far as reasonably practicable to, record the location, extent and product type of any presumed or known ACMs. All areas identified in the survey were inspected and the information recorded on the accessibility, condition and surface treatment of any presumed or known ACMs. The asbestos type was identified either by collecting representative samples of suspect materials for laboratory identification, or by making a presumption based on the product type and its appearance.

3 GENERAL SITE AND SURVEY INFORMATION

Client Details:

Client Address: Malone O Regan Consulting Engineers
Malone O'Regan Consulting Engineers
2B Richview Office Park
Clonskeagh
Dublin 14

Site Address: Collins Avenue Depot
Collins Avenue
Dublin 9

Commissioned By: Malone O Reagan Consulting Engineers

Surveyor: Anthony Scullion

Staff Consulted during the survey Paul McClelland DCC

Date of Survey: 08/01/2024

Date of Report: 16/01/2024

Description of the Areas Surveyed: All areas

Excluded Areas: As per the clients requirements the following areas were not accessed;

Fully intrusive survey as far as reasonably practicable throughout all the buildings. No 'live' or working equipment was accessed

Survey Methodology: On-site inspection bulk sampling and risk assessment were conducted in accordance with OHSS documented in-house work instructions.

Analysis of asbestos fibres in bulk materials is carried out at the OHSS laboratory.

The surveyor conducted a systematic inspection of the nominated areas. Where access for sampling purposes was not possible, a visual assessment has been made if possible. For similar/repetitive elements, a representative bulk sampling protocol has been adopted following visual examination and assessment.

Bulk Samples are obtained using fibre suppression techniques in order to minimise respirable fibre release. Each sample was double bagged, uniquely labelled on site and then returned to the laboratory for analysis using plane and polarised light microscopy and dispersion staining techniques as defined in UK HSE Guidelines HSG248 and the OHSS documented in-house work instructions.

The results of the survey together with the laboratory bulk sample analysis records are given in further sections to this report.

The Safety Health and Welfare at Work (Exposure to Asbestos) Regulations 2006-2010 allows materials to be 'presumed' to contain asbestos. Therefore in the asbestos survey, materials can be presumed to contain asbestos.

There are two levels of 'presumption':

- **Strongly presumed:** in this case the material looks as if it is an ACM, or that it might contain asbestos. This conclusion can be reached through visual inspection alone by an experienced, well-trained surveyor, familiar with the range of asbestos products. Examples of 'strong presumption' are:
 - where laboratory analysis has confirmed the presence of

asbestos in a similar construction material;

- materials in which asbestos is known to have been commonly used in the manufactured product at the time of installation (eg corrugated cement roof and wall sheeting, cement gutters and drainpipes, cement water tanks, ceiling tiles, insulating boards);
- materials which have the appearance of asbestos but no sample has been taken, eg thermal insulation on a pipe where fibres are clearly visible
- where the laboratory has sampled the same material in a different location and subsequent laboratory analysis has found that it does not contain asbestos.
- **Presumed:** is the 'default' situation where a material is **presumed** to contain asbestos because there is insufficient evidence (eg no analysis) to confirm that it is asbestos free, or where a surveyor decides that it is easier under the planned management arrangements to presume certain materials contain asbestos. Many non-asbestos materials will also be presumed to contain asbestos using this system.

There is a further default situation where materials must be **presumed** to contain asbestos. **The default applies to areas which cannot be accessed or inspected. In this situation any area not accessed or inspected must be presumed to contain asbestos, unless there is strong evidence that it does not.**

The risk assessment process (also known as risk algorithms) designed by HSE, allow asbestos containing materials to be ranked according to a Material Assessment algorithm and a HSE have related the scores obtained in the materials assessment algorithms in HSG 264 to a number of risk categories that may be

used to guide the employers as to the best course of action to take to mitigate the risk. These are further explained in our risk assessment sheets contained within this report.

These scores can then be ranked and so decisions can be taken as to what actions are required to control the risks from asbestos containing materials during demolition.

4 CONCLUSIONS AND ACTIONS

Where asbestos containing materials were identified in the survey recommendations are provided in the asbestos register and risk assessments. A further explanation of the terms used in the management of asbestos containing materials risks are given below.

Asbestos is a known human carcinogen (cancer causing agent) that was used extensively in Ireland up to 2000 when it was finally banned from use. Asbestos fibres may cause fatal lung disease when inhaled. These diseases are not sudden and may take many years to develop from the first exposures. **Asbestos containing materials constitute a particular risk within the meaning of the Safety Health and Welfare at Work (Construction) Regulations 2006-2013 and should be addressed in the Preliminary Health and Safety Plan by the designers and the Project Supervisor Design Process.**

Asbestos is a fibrous material and has excellent insulating and fire resistant properties. Asbestos was seldom used as pure asbestos fibres but rather combined with other products to add strength and stability or fire resistance to them. Asbestos may be found in products from a few percent up to 90% depending on the type of material.

Asbestos is a hazard to humans but the risks posed by asbestos containing materials (ACM) will depend on the type of ACM found. In simple terms where asbestos products are flaky and would crumble under hand pressure quite easily they are termed friable. The more friable the ACM the more risk there is to the individual handling the material. This is reflected in the material assessment scores in the risk assessments

No person is permitted to work with asbestos containing materials unless they have received training and have taken all reasonable steps to prevent exposure to asbestos. The requirement for training is detailed in Regulation 17 of the Safety Health and Welfare at Work (Exposure to Asbestos) Regulations, 2006-2010

4.1 DEMOLITION OPTIONS

ACM are found in many industrial buildings, hospitals, schools and homes. These materials were installed before 2000 with the peak period for installation occurring from the 1970's to the late 1980's. ACM's installed some 20-30 years ago will vary in condition depending on the type of product and the use of that product. The Safety health and Welfare at Work (Exposure to Asbestos) Regulations 2006-2010 requires a managed approach to asbestos containing materials in workplaces. These regulations require employers to identify the presence of asbestos containing materials and to assess the risk posed to workers by these

ACM's based on the likely work activities and the potential for these work activities to disturb ACM's.

The outcome of these risk assessments are as follows;

1. Environmental clean

Where there is debris from the installed ACM's in the surrounding area it may be recommended that this material is removed by environmentally cleaning the area around the materials. Following removal of the asbestos containing materials a site clearance for re-occupation certificate must be obtained from a competent independent analyst prior to demolition of the structure in accordance with **Regulation 15 (10) of the Safety Health and Welfare at Work (Exposure to Asbestos) Regulations 2006-2010.**

2. Remove

Prior to demolition of the building or structure asbestos containing materials must be removed and disposed of by a competent contractor. ACM removal will form part of a construction project and will require careful coordination to be carried out safely. Following removal of the asbestos containing materials a site clearance for re-occupation certificate must be obtained from a competent independent analyst prior to demolition of the structure in accordance with **Regulation 15 (10) of the Safety Health and Welfare at Work (Exposure to Asbestos) Regulations 2006-2010.**

4.2 MATERIALS ASSESSMENT SCORING

4.2.1 ASBESTOS RISK ASSESSMENT

Employers are required under the Safety Health and Welfare at Work (Exposure to Asbestos) Regulations 2006-2010 to perform a risk assessment whenever they identify asbestos containing materials within the working environment. The risk posed by asbestos is determined by the current and potential level of employee exposure to asbestos fibres. The following parameters are used in developing a risk assessment for asbestos containing materials;

4.2.2 ASBESTOS TYPE

There are six regulated types of asbestos. The common names associated with some of the asbestos types are shown in brackets below;

- Crocidolite (Blue Asbestos)
- Amosite (Brown Asbestos)
- Actinolite
- Anthophyllite
- Tremolite
- Chrysotile (White Asbestos)

International studies have identified that they have different potential to cause harm. Crocidolite is the most dangerous and Chrysotile the least.

4.2.3 SURFACE TREATMENT

Surface treatment is a term used to describe how the fibres in the material are protected from release. The safest materials are composites such as cement and plastic where the fibres are contained within a material within a strong matrix. At the other end of the scale are materials that damage easily and have no protective coating such as sprayed asbestos and boiler lagging.

4.2.4 FRIABILITY

Products that damage easily such as sprayed asbestos are clearly more likely to release fibres than strong materials such as cement. This 'likelihood of fibre release' or crumbliness is commonly referred to as friability. Materials with high friability (such as insulation) are higher risk than those with low friability (such as vinyl floor tiles).

4.2.5 CONDITION

Products which are damaged are more likely to release fibres than those in good condition and are ranked according to the extent of damage observed.

4.3 CALCULATING RISK ASSESSMENTS

The Health and Safety Executive developed a risk assessment process within HSG264 which takes these four factors into account and attributes values to each of the factors allowing you to calculate a material risk assessment.

4.3.1 MATERIAL ASSESSMENT ALGORITHM

The material assessment algorithm is commonly used by most surveying organisations to give an indication of how dangerous a material is. Each of the four risk factors (friability, condition, surface treatment and asbestos type) are attributed a score of between 0 and 3 (see below). These scores are accumulated to give a risk score of between 0 and 12 (where 12 is the highest risk).

Project Number: 39361

When using this algorithm it is commonly accepted that materials can be divided into the following risk groups;

Material Risk Rating	Description
10-12	High risk
7-9	Medium risk
5-6	Low risk
2-4	Very low risk

These are colour coded within our risk assessment as outlined above.

4.3.2 HSG264 MATERIAL ASSESSMENT TABLE

Sample Variable	Score	Example of Score
Product type (or debris from product)	1	Asbestos reinforced composites (Plastics, resins, mastics, roofing felts, vinyl floor tiles, semi-rigid paints or decorative finishes, asbestos cement etc)
	2	Asbestos insulation board, mill boards, other low density boards, asbestos textiles, gaskets, ropes and woven textiles, asbestos paper and felt
	3	Thermal insulation (pipe and boiler lagging), Sprayed Asbestos, loose asbestos, asbestos mattresses and packing
Extent of damage / deterioration	0	Good condition: no visible damage
	1	Low Damage: a few scratches or surface marks; broken edges on boards, tiles etc
	2	Medium damage; significant breakage of materials or several small areas where material has been damaged revealing loose asbestos fibres
	3	High damage or delamination of materials, sprays or insulation. Visible asbestos debris
Surface Treatment	0	Composite materials containing asbestos: reinforced plastics, resins, vinyl tiles
	1	Enclosed sprays and lagging, AIB (with exposed face painted or encapsulated), asbestos cement sheets
	2	Unsealed AIB, or encapsulated lagging and sprays
	3	Unsealed lagging and sprays
Asbestos Type	1	Chrysotile
	2	Amphibole asbestos excluding crocidolite
	3	Crocidolite

4.4 REFERENCES

Safety Health and Welfare at Work Act 2005

Safety Health and Welfare at Work (Exposure to Asbestos) Regulations 2006-2010

Safety Health and Welfare at Work (Construction) Regulations 2013

HSG264 The Survey Guide, HSE Books

HSG248 The Analysts Guide, HSE Books

HSG247 The Contractors Guide, HSE Books

5 SURVEY RESULTS



Survey Results






ACM Risk Register

The following areas were found to contain ACM's

RA Number	81092	Location		Welding workshop, Fume extraction unit					
Product	Quantity	Condition	Treatment	Asbestos	Sample No.	Confirmation	MA	Recommendations	
				Presumed ACM Present		Presumed	6	Priority 1 : Investigate prior to disturbing	
RA Number	81095	Location		Ladies toilets, Toilet cisterns					
Product	Quantity	Condition	Treatment	Asbestos	Sample No.	Confirmation	MA	Recommendations	
Toilet Cisterns		Good Condition	Composite Materials Containing Asbestos	Amosite		Strongly Presumed	3	Priority 1 : Remove ACM's Prior to Refurbishment or Demolition.	
RA Number	81100	Location		Maintenance office, Floor					
Product	Quantity	Condition	Treatment	Asbestos	Sample No.	Confirmation	MA	Recommendations	
Vinyl Floor Tiles & Bitumen		Good Condition	Composite Materials Containing Asbestos	Chrysotile	ASB20231211002	Strongly Presumed	2	Priority 1 : Remove ACM's Prior to Refurbishment or Demolition.	
RA Number	81106	Location		Meeting room, Floor					
Product	Quantity	Condition	Treatment	Asbestos	Sample No.	Confirmation	MA	Recommendations	
Vinyl Floor Tiles & Bitumen		Good Condition	Composite Materials Containing Asbestos	Chrysotile	ASB20231211002	Strongly Presumed	2	Priority 1 : Remove ACM's Prior to Refurbishment or Demolition.	
RA Number	81107	Location		Front office and server room, Floor					
Product	Quantity	Condition	Treatment	Asbestos	Sample No.	Confirmation	MA	Recommendations	
Vinyl Floor Tiles & Bitumen		Good Condition	Composite Materials Containing Asbestos	Chrysotile	ASB20231211002	Strongly Presumed	2	Priority 1 : Remove ACM's Prior to Refurbishment or Demolition.	

ACM Risk Register

The following areas were found to contain ACM's

RA Number	Quantity	Condition	Treatment	Asbestos	Sample No.	Confirmation	MA	Recommendations	
81110		Location			Front office, Floor				
Vinyl Floor Tiles & Bitumen		Good Condition	Composite Materials Containing Asbestos	Chrysotile	ASB20231211004	Sample Taken	2	Priority 1 : Remove ACM's Prior to Refurbishment or Demolition.	
81098		Location			Back office, Floor				
Asbestos Bitumen Products		Good condition	Composite Materials Containing Asbestos	Chrysotile	ASB20231211002	Sample Taken	2	Priority 1 : Remove ACM's Prior to Refurbishment or Demolition.	
81103		Location			Middle office, Floor				
Vinyl Floor Tiles & Bitumen		Good Condition	Composite Materials Containing Asbestos	Chrysotile	ASB20231211002	Strongly Presumed	2	Priority 1 : Remove ACM's Prior to Refurbishment or Demolition.	
81091		Location			Welding workshop, Electrical panel				
				Chrysotile		Presumed	1	Priority 1 : Investigate prior to disturbing	
81125		Location			Store, Electrical panel				
				Chrysotile		Presumed	1	Priority 1 : Investigate prior to disturbing	

Asbestos Containing Materials Risk Assessment

Demolition

in accordance with HSG264

5C Fingal Bay Business Park, Harry Reynolds Road, Balbriggan, Co. Dublin Tel: (01) 6905907 Fax: (01) 8020439 Email: info@ohss.ie Website: www.ohss.ie

Client and Survey Details : 8432

Client : Malone O Regan Consulting Engineers	Date of Survey : 08-01-2024
Site : Collins Avenue Depot	Review Date : 08-01-2025
Address : Collins Avenue	Surveyor : Anthony Scullion
Dublin 9	Method : WI-02 & WI-03

Location Details : 81092

Building/Area :	Sample No. :
Room/Section : Welding workshop	Confirmation : Presumed
Location : Fume extraction unit	Access : No Access (See Notes)
Description : internals	Normal Use :

Material Risk Assessment : 81092

Asbestos Type : Presumed ACM Present	Score	
Type Of Product :	6	High Risk
Condition :	0	Midium Risk
Surface Treatment :	0	Low Risk
Quantity :	0	Very Low Risk
Material Assessment Score :	6	Low Risk

Removal/Encapsulation Estimate

To be completed by the estimating contractor

	Costs	Notes
Labour		
Equipment		
Disposal		
Analytical		
Total		

Photograph



Recommendations and Notes

Priority 1 : Investigate prior to disturbing

Live at time of survey

While every effort was taken to insure the accuracy of this report we do not accept responsibility for any omissions or areas of the building not addressed in the report. This report is intended to assist in reducing the possibility of accidents and ill health by bringing to the client's attention identified asbestos containing materials. It is not implied that all other hazards are under control at the time of inspections.

Asbestos Containing Materials Risk Assessment

Demolition

in accordance with HSG264

5C Fingal Bay Business Park, Harry Reynolds Road, Balbriggan, Co. Dublin Tel: (01) 6905907 Fax: (01) 8020439 Email: info@ohss.ie Website: www.ohss.ie

Client and Survey Details : 8432

Client : Malone O Regan Consulting Engineers	Date of Survey : 08-01-2024
Site : Collins Avenue Depot	Review Date : 08-01-2025
Address : Collins Avenue	Surveyor : Anthony Scullion
Dublin 9	Method : WI-02 & WI-03

Location Details : 81095

Building/Area :	Sample No. :
Room/Section : Ladies toilets	Confirmation : Strongly Presumed
Location : Toilet cisterns	Access : Full Access
Description : Shires Lynx	Normal Use :

Material Risk Assessment : 81095

Asbestos Type : Amosite	Score	Risk Rating
Type Of Product : Toilet Cisterns	2	High Risk
Condition : Good Condition	1	Midium Risk
Surface Treatment : Composite Materials Containing Asbestos	0	Low Risk
Quantity :	0	Very Low Risk
Material Assessment Score :	3	Very Low Risk

Removal/Encapsulation Estimate

To be completed by the estimating contractor

	Costs	Notes
Labour		
Equipment		
Disposal		
Analytical		
Total		

Photograph



Recommendations and Notes

Priority 1 : Remove ACM's Prior to Refurbishment or Demolition.

--N/A--

While every effort was taken to insure the accuracy of this report we do not accept responsibility for any omissions or areas of the building not addressed in the report. This report is intended to assist in reducing the possibility of accidents and ill health by bringing to the client's attention identified asbestos containing materials. It is not implied that all other hazards are under control at the time of inspections.

Asbestos Containing Materials Risk Assessment

Demolition

in accordance with HSG264

5C Fingal Bay Business Park, Harry Reynolds Road, Balbriggan, Co. Dublin Tel: (01) 6905907 Fax: (01) 8020439 Email: info@ohss.ie Website: www.ohss.ie

Client and Survey Details : 8432

Client : Malone O Regan Consulting Engineers	Date of Survey : 08-01-2024
Site : Collins Avenue Depot	Review Date : 08-01-2025
Address : Collins Avenue	Surveyor : Anthony Scullion
Dublin 9	Method : WI-02 & WI-03

Location Details : 81100

Building/Area :	Sample No. : ASB20231211002
Room/Section : Maintenance office	Confirmation : Strongly Presumed
Location : Floor	Access : Full Access
Description : VFT and bitumen	Normal Use :

Material Risk Assessment : 81100

Asbestos Type : Chrysotile	Score	Risk Rating
Type Of Product : Vinyl Floor Tiles & Bitumen	1	High Risk
Condition : Good Condition	1	Midium Risk
Surface Treatment : Composite Materials Containing Asbestos	0	Low Risk
Quantity :	0	Very Low Risk
Material Assessment Score :	2	Very Low Risk

Removal/Encapsulation Estimate

To be completed by the estimating contractor

	Costs	Notes
Labour		
Equipment		
Disposal		
Analytical		
Total		

Photograph



Recommendations and Notes

Priority 1 : Remove ACM's Prior to Refurbishment or Demolition.

--N/A--

While every effort was taken to insure the accuracy of this report we do not accept responsibility for any omissions or areas of the building not addressed in the report. This report is intended to assist in reducing the possibility of accidents and ill health by bringing to the client's attention identified asbestos containing materials. It is not implied that all other hazards are under control at the time of inspections.

5C Fingal Bay Business Park, Harry Reynolds Road, Balbriggan, Co. Dublin Tel: (01) 6905907 Fax: (01) 8020439 Email: info@ohss.ie Website: www.ohss.ie

Client and Survey Details : 8432

Client : Malone O Regan Consulting Engineers	Date of Survey : 08-01-2024
Site : Collins Avenue Depot	Review Date : 08-01-2025
Address : Collins Avenue	Surveyor : Anthony Scullion
Dublin 9	Method : WI-02 & WI-03

Location Details : 81106

Building/Area : Meeting room	Sample No. : ASB20231211002
Room/Section : Floor	Confirmation : Strongly Presumed
Location : vft and bitumen	Access : Full Access
Description :	Normal Use :

Material Risk Assessment : 81106

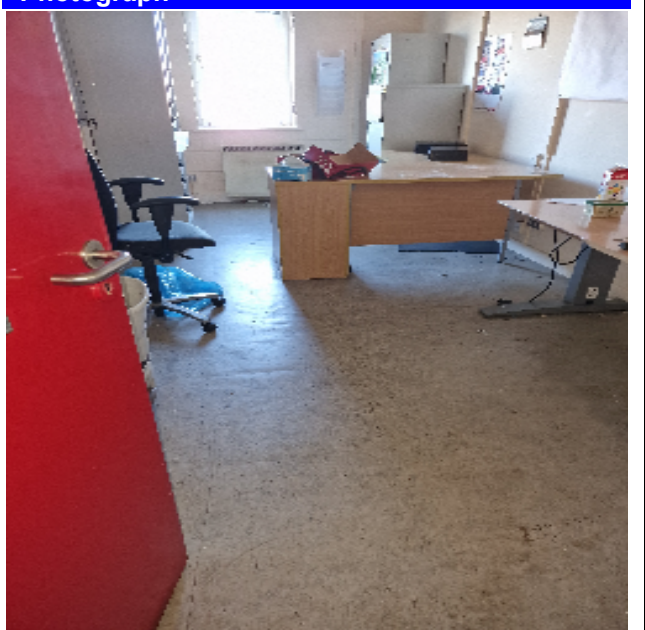
	Score	Risk Rating
Asbestos Type : Chrysotile	1	High Risk
Type Of Product : Vinyl Floor Tiles & Bitumen	1	Midium Risk
Condition : Good Condition	0	Low Risk
Surface Treatment : Composite Materials Containing Asbestos	0	Very Low Risk
Quantity :		Very Low Risk
Material Assessment Score :	2	Very Low Risk

Removal/Encapsulation Estimate

To be completed by the estimating contractor

	Costs	Notes
Labour		
Equipment		
Disposal		
Analytical		
Total		

Photograph



Recommendations and Notes

Priority 1 : Remove ACM's Prior to Refurbishment or Demolition.

--N/A--

While every effort was taken to insure the accuracy of this report we do not accept responsibility for any omissions or areas of the building not addressed in the report. This report is intended to assist in reducing the possibility of accidents and ill health by bringing to the client's attention identified asbestos containing materials. It is not implied that all other hazards are under control at the time of inspections.

Asbestos Containing Materials Risk Assessment

Demolition

in accordance with HSG264

5C Fingal Bay Business Park, Harry Reynolds Road, Balbriggan, Co. Dublin Tel: (01) 6905907 Fax: (01) 8020439 Email: info@ohss.ie Website: www.ohss.ie

Client and Survey Details : 8432

Client : Malone O Regan Consulting Engineers	Date of Survey : 08-01-2024
Site : Collins Avenue Depot	Review Date : 08-01-2025
Address : Collins Avenue	Surveyor : Anthony Scullion
Dublin 9	Method : WI-02 & WI-03

Location Details : 81107

Building/Area :	Sample No. : ASB20231211002
Room/Section : Front office and server room	Confirmation : Strongly Presumed
Location : Floor	Access : Full Access
Description : vft and bitumen	Normal Use :

Material Risk Assessment : 81107

	Score	
Asbestos Type : Chrysotile	1	High Risk
Type Of Product : Vinyl Floor Tiles & Bitumen	1	Midium Risk
Condition : Good Condition	0	Low Risk
Surface Treatment : Composite Materials Containing Asbestos	0	Very Low Risk
Quantity :		Very Low Risk
Material Assessment Score :	2	Very Low Risk

Removal/Encapsulation Estimate

To be completed by the estimating contractor

	Costs	Notes
Labour		
Equipment		
Disposal		
Analytical		
Total		

Photograph



Recommendations and Notes

Priority 1 : Remove ACM's Prior to Refurbishment or Demolition.

--N/A--

While every effort was taken to insure the accuracy of this report we do not accept responsibility for any omissions or areas of the building not addressed in the report. This report is intended to assist in reducing the possibility of accidents and ill health by bringing to the client's attention identified asbestos containing materials. It is not implied that all other hazards are under control at the time of inspections.

Asbestos Containing Materials Risk Assessment

Demolition

in accordance with HSG264

5C Fingal Bay Business Park, Harry Reynolds Road, Balbriggan, Co. Dublin Tel: (01) 6905907 Fax: (01) 8020439 Email: info@ohss.ie Website: www.ohss.ie

Client and Survey Details : 8432

Client : Malone O Regan Consulting Engineers	Date of Survey : 08-01-2024
Site : Collins Avenue Depot	Review Date : 08-01-2025
Address : Collins Avenue	Surveyor : Anthony Scullion
Dublin 9	Method : WI-02 & WI-03

Location Details : 81110

Building/Area :	Sample No. : ASB20231211004
Room/Section : Front office	Confirmation : Sample Taken
Location : Floor	Access : Full Access
Description : vft and bitumen	Normal Use :

Material Risk Assessment : 81110

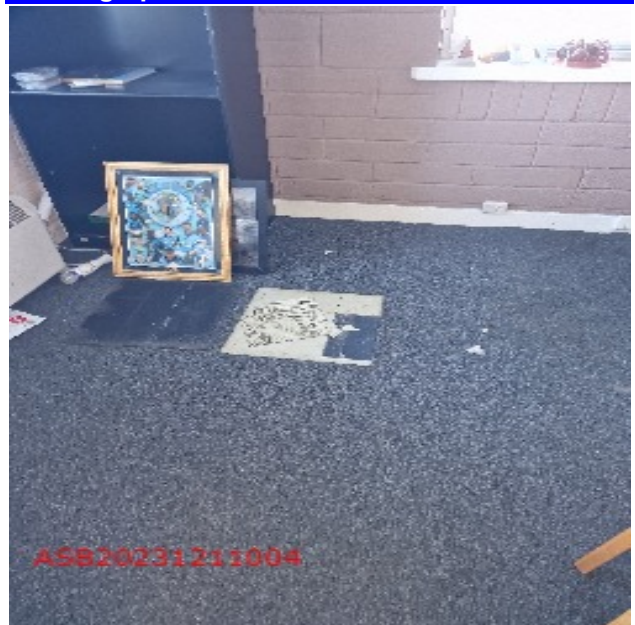
Asbestos Type : Chrysotile	Score	Risk Rating
Type Of Product : Vinyl Floor Tiles & Bitumen	1	High Risk
Condition : Good Condition	1	Midium Risk
Surface Treatment : Composite Materials Containing Asbestos	0	Low Risk
Quantity :	0	Very Low Risk
Material Assessment Score :	2	Very Low Risk

Removal/Encapsulation Estimate

To be completed by the estimating contractor

	Costs	Notes
Labour		
Equipment		
Disposal		
Analytical		
Total		

Photograph



Recommendations and Notes

Priority 1 : Remove ACM's Prior to Refurbishment or Demolition.

--N/A--

While every effort was taken to insure the accuracy of this report we do not accept responsibility for any omissions or areas of the building not addressed in the report. This report is intended to assist in reducing the possibility of accidents and ill health by bringing to the client's attention identified asbestos containing materials. It is not implied that all other hazards are under control at the time of inspections.

Asbestos Containing Materials Risk Assessment Demolition in accordance with HSG264

5C Fingal Bay Business Park, Harry Reynolds Road, Balbriggan, Co. Dublin Tel: (01) 6905907 Fax: (01) 8020439 Email: info@ohss.ie Website: www.ohss.ie

Client and Survey Details : 8432

Client : Malone O Regan Consulting Engineers	Date of Survey : 08-01-2024
Site : Collins Avenue Depot	Review Date : 08-01-2025
Address : Collins Avenue Dublin 9	Surveyor : Anthony Scullion Method : WI-02 & WI-03

Location Details : 81098

Building/Area :	Sample No. : ASB20231211002
Room/Section : Back office	Confirmation : Sample Taken
Location : Floor	Access : Full Access
Description : VFT and Bitumen	Normal Use :

Material Risk Assessment : 81098

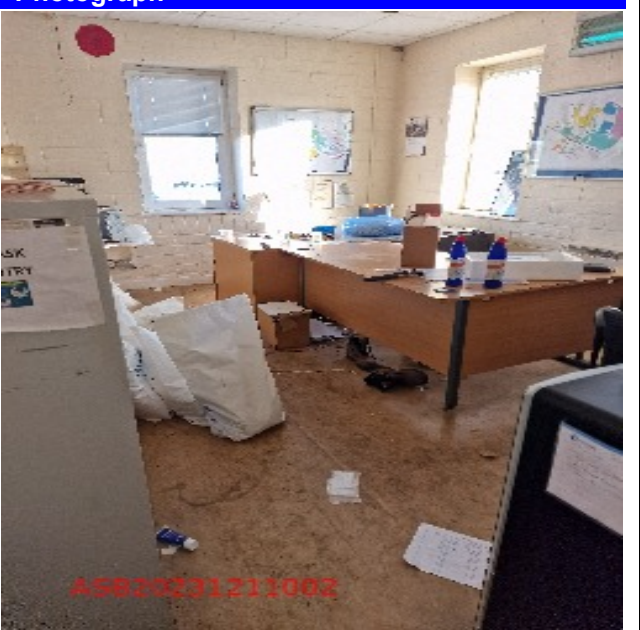
	Score	Risk Rating
Asbestos Type : Chrysotile	1	High Risk
Type Of Product : Asbestos Bitumen Products	1	Midium Risk
Condition : Good condition	0	Low Risk
Surface Treatment : Composite Materials Containing Asbestos	0	Very Low Risk
Quantity :		Very Low Risk
Material Assessment Score :	2	

Removal/Encapsulation Estimate

To be completed by the estimating contractor

	Costs	Notes
Labour		
Equipment		
Disposal		
Analytical		
Total		

Photograph



Recommendations and Notes

Priority 1 : Remove ACM's Prior to Refurbishment or Demolition.

--N/A--

While every effort was taken to insure the accuracy of this report we do not accept responsibility for any omissions or areas of the building not addressed in the report. This report is intended to assist in reducing the possibility of accidents and ill health by bringing to the client's attention identified asbestos containing materials. It is not implied that all other hazards are under control at the time of inspections.

Asbestos Containing Materials Risk Assessment

Demolition

in accordance with HSG264

5C Fingal Bay Business Park, Harry Reynolds Road, Balbriggan, Co. Dublin Tel: (01) 6905907 Fax: (01) 8020439 Email: info@ohss.ie Website: www.ohss.ie

Client and Survey Details : 8432

Client : Malone O Regan Consulting Engineers	Date of Survey : 08-01-2024
Site : Collins Avenue Depot	Review Date : 08-01-2025
Address : Collins Avenue	Surveyor : Anthony Scullion
Dublin 9	Method : WI-02 & WI-03

Location Details : 81103

Building/Area :	Sample No. : ASB20231211002
Room/Section : Middle office	Confirmation : Strongly Presumed
Location : Floor	Access : Full Access
Description : vft and bitumen	Normal Use :

Material Risk Assessment : 81103

	Score	Risk Rating
Asbestos Type : Chrysotile	1	High Risk
Type Of Product : Vinyl Floor Tiles & Bitumen	1	Midium Risk
Condition : Good Condition	0	Low Risk
Surface Treatment : Composite Materials Containing Asbestos	0	Very Low Risk
Quantity :		Very Low Risk
Material Assessment Score :	2	Very Low Risk

Removal/Encapsulation Estimate

To be completed by the estimating contractor

	Costs	Notes
Labour		
Equipment		
Disposal		
Analytical		
Total		

Photograph



Recommendations and Notes

Priority 1 : Remove ACM's Prior to Refurbishment or Demolition.

--N/A--

While every effort was taken to insure the accuracy of this report we do not accept responsibility for any omissions or areas of the building not addressed in the report. This report is intended to assist in reducing the possibility of accidents and ill health by bringing to the client's attention identified asbestos containing materials. It is not implied that all other hazards are under control at the time of inspections.

Asbestos Containing Materials Risk Assessment Demolition in accordance with HSG264

5C Fingal Bay Business Park, Harry Reynolds Road, Balbriggan, Co. Dublin Tel: (01) 6905907 Fax: (01) 8020439 Email: info@ohss.ie Website: www.ohss.ie

Client and Survey Details : 8432

Client : Malone O Regan Consulting Engineers	Date of Survey : 08-01-2024
Site : Collins Avenue Depot	Review Date : 08-01-2025
Address : Collins Avenue Dublin 9	Surveyor : Anthony Scullion Method : WI-02 & WI-03

Location Details : 81091

Building/Area :	Sample No. :
Room/Section : Welding workshop	Confirmation : Presumed
Location : Electrical panel	Access : No Access (See Notes)
Description : Switchgear	Normal Use :

Material Risk Assessment : 81091

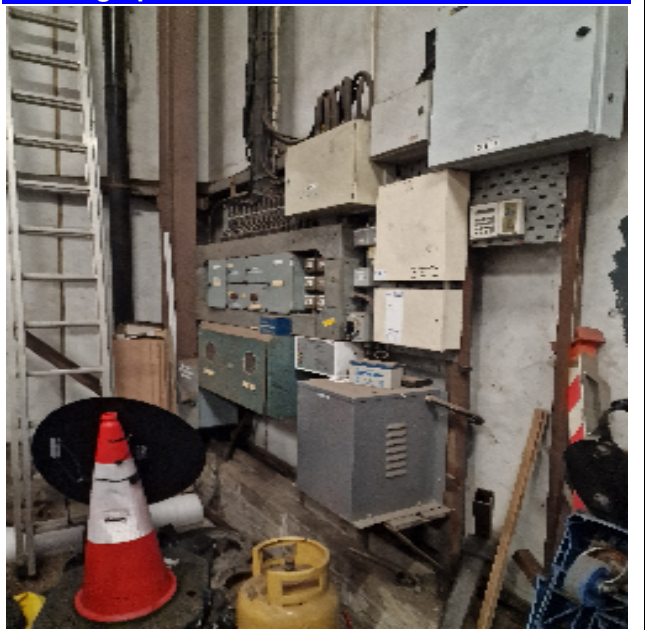
Asbestos Type : Chrysotile	Score	Risk Rating
Type Of Product :	1	High Risk
Condition :	0	Midium Risk
Surface Treatment :	0	Low Risk
Quantity :	0	Very Low Risk
Material Assessment Score :	1	Very Low Risk

Removal/Encapsulation Estimate

To be completed by the estimating contractor

	Costs	Notes
Labour		
Equipment		
Disposal		
Analytical		
Total		

Photograph



Recommendations and Notes

Priority 1 : Investigate prior to disturbing

Switchgear live at time of Survey

While every effort was taken to insure the accuracy of this report we do not accept responsibility for any omissions or areas of the building not addressed in the report. This report is intended to assist in reducing the possibility of accidents and ill health by bringing to the client's attention identified asbestos containing materials. It is not implied that all other hazards are under control at the time of inspections.

Client and Survey Details : 8432

Client : Malone O Regan Consulting Engineers	Date of Survey : 08-01-2024
Site : Collins Avenue Depot	Review Date : 08-01-2025
Address : Collins Avenue	Surveyor : Anthony Scullion
Dublin 9	Method : WI-02 & WI-03

Location Details : 81125

Building/Area :	Sample No. :
Room/Section : Store	Confirmation : Presumed
Location : Electrical panel	Access : No Access (See Notes)
Description : Switchgear	Normal Use :

Material Risk Assessment : 81125

Asbestos Type : Chrysotile	Score	Risk Rating
Type Of Product :	1	High Risk
Condition :	0	Midium Risk
Surface Treatment :	0	Low Risk
Quantity :	0	Very Low Risk
Material Assessment Score :	1	Very Low Risk

Removal/Encapsulation Estimate

To be completed by the estimating contractor

	Costs	Notes
Labour		
Equipment		
Disposal		
Analytical		
Total		

Photograph



Recommendations and Notes

Priority 1 : Investigate prior to disturbing

Switchgear live at time of Survey

While every effort was taken to insure the accuracy of this report we do not accept responsibility for any omissions or areas of the building not addressed in the report. This report is intended to assist in reducing the possibility of accidents and ill health by bringing to the client's attention identified asbestos containing materials. It is not implied that all other hazards are under control at the time of inspections.



Customer
Site
Survey Date
Valid Until
Commissioned By

Malone O Regan Consulting Engineers
Collins Avenue Depot
08/01/2024
08/01/2025
DCC

Type
Report Number
Surveyor
Review Date
Method

Demolition
39361
Anthony Scullion
08/01/2025
WI-02 & WI-03



Risk Register

The following areas could not be accessed and therefore in accordance with HSG264 should be presumed to contain ACM's.

RA Number	81092	Location	Welding workshop, Fume extraction unit
RA Number	81091	Location	Welding workshop, Electrical panel
RA Number	81125	Location	Store, Electrical panel

Client and Survey Details : 8432

Client : Malone O Regan Consulting Engineers	Date of Survey : 08-01-2024
Site : Collins Avenue Depot	Review Date : 08-01-2025
Address : Collins Avenue	Surveyor : Anthony Scullion
Dublin 9	Method : WI-02 & WI-03

Location Details : 81092

Building/Area :	Sample No. :
Room/Section : Welding workshop	Confirmation : Presumed
Location : Fume extraction unit	Access : No Access (See Notes)
Description : internals	Normal Use :

Material Risk Assessment : 81092

Asbestos Type : Presumed ACM Present	Score
Type Of Product :	6
Condition :	0
Surface Treatment :	0
Quantity :	0
Material Assessment Score :	6

Photograph



Priority Assessment

Normal Occupant Activity :	0
Likelihood of Disturbance	
Location :	0
Accessibility :	0
Extent/Amount :	0
Human Exposure Potential	
Number of Occupants :	0
Frequency of Use :	0
Average Time of Use :	0
Maintenance Activity	
Type of Maintenance :	0
Frequency of Maintenance :	0
Material and Priority Assessment Score :	6

Risk Assessment

Priority Scores of 18 or More = High Risk
Priority Scores of 12 to 17 = Medium Risk
Priority Scores of 11 or less = Lower Risk
Lower Risk

Recommendations and Notes

Priority 1 : Investigate prior to disturbing

Live at time of survey

While every effort was taken to insure the accuracy of this report we do not accept responsibility for any omissions or areas of the building not addressed in the report. This report is intended to assist in reducing the possibility of accidents and ill health by bringing to the client's attention identified asbestos containing materials. It is not implied that all other hazards are under control at the time of inspections.

Client and Survey Details : 8432

Client : Malone O Regan Consulting Engineers	Date of Survey : 08-01-2024
Site : Collins Avenue Depot	Review Date : 08-01-2025
Address : Collins Avenue	Surveyor : Anthony Scullion
Dublin 9	Method : WI-02 & WI-03

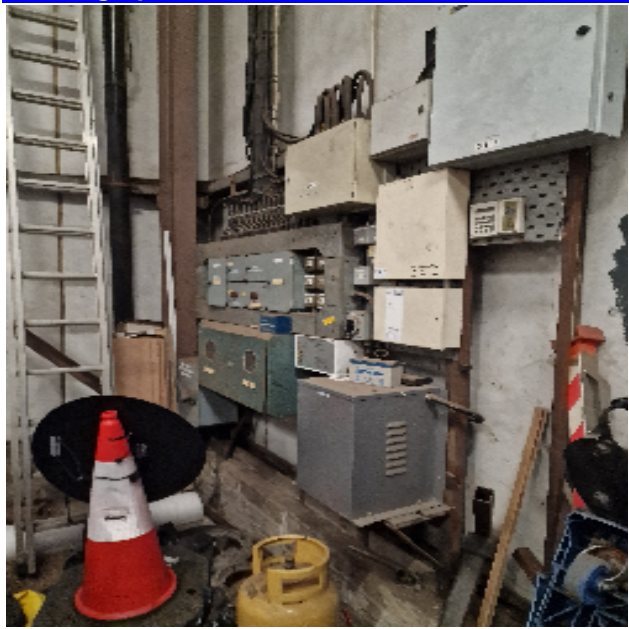
Location Details : 81091

Building/Area :	Sample No. :
Room/Section : Welding workshop	Confirmation : Presumed
Location : Electrical panel	Access : No Access (See Notes)
Description : Switchgear	Normal Use :

Material Risk Assessment : 81091

Asbestos Type : Chrysotile	Score 1
Type Of Product :	0
Condition :	0
Surface Treatment :	0
Quantity :	0
Material Assessment Score :	1

Photograph



Priority Assessment

Normal Occupant Activity :	0
Likelihood of Disturbance	
Location :	0
Accessibility :	0
Extent/Amount :	0
Human Exposure Potential	
Number of Occupants :	0
Frequency of Use :	0
Average Time of Use :	0
Maintenance Activity	
Type of Maintenance :	0
Frequency of Maintenance :	0
Material and Priority Assessment Score :	1

Risk Assessment

Priority Scores of 18 or More = High Risk
Priority Scores of 12 to 17 = Medium Risk
Priority Scores of 11 or less = Lower Risk
Lower Risk

Recommendations and Notes

<p>Priority 1 : Investigate prior to disturbing</p> <p>Switchgear live at time of Survey</p>
--

While every effort was taken to insure the accuracy of this report we do not accept responsibility for any omissions or areas of the building not addressed in the report. This report is intended to assist in reducing the possibility of accidents and ill health by bringing to the client's attention identified asbestos containing materials. It is not implied that all other hazards are under control at the time of inspections.

Client and Survey Details : 8432

Client : Malone O Regan Consulting Engineers	Date of Survey : 08-01-2024
Site : Collins Avenue Depot	Review Date : 08-01-2025
Address : Collins Avenue	Surveyor : Anthony Scullion
Dublin 9	Method : WI-02 & WI-03

Location Details : 81125

Building/Area :	Sample No. :
Room/Section : Store	Confirmation : Presumed
Location : Electrical panel	Access : No Access (See Notes)
Description : Switchgear	Normal Use :

Material Risk Assessment : 81125

Asbestos Type : Chrysotile	Score 1
Type Of Product :	0
Condition :	0
Surface Treatment :	0
Quantity :	0
Material Assessment Score :	1

Photograph



Priority Assessment

Normal Occupant Activity :	0
Likelihood of Disturbance	
Location :	0
Accessibility :	0
Extent/Amount :	0
Human Exposure Potential	
Number of Occupants :	0
Frequency of Use :	0
Average Time of Use :	0
Maintenance Activity	
Type of Maintenance :	0
Frequency of Maintenance :	0
Material and Priority Assessment Score :	1

Risk Assessment

Priority Scores of 18 or More = High Risk
Priority Scores of 12 to 17 = Medium Risk
Priority Scores of 11 or less = Lower Risk
Lower Risk

Recommendations and Notes

<p>Priority 1 : Investigate prior to disturbing</p> <p>Switchgear live at time of Survey</p>
--

While every effort was taken to insure the accuracy of this report we do not accept responsibility for any omissions or areas of the building not addressed in the report. This report is intended to assist in reducing the possibility of accidents and ill health by bringing to the client's attention identified asbestos containing materials. It is not implied that all other hazards are under control at the time of inspections.

Risk Register

Area(s) inspected during the survey where no ACM's were identified.

RA Number	81090	Location	Welding workshop, Walls, floor Roof
RA Number	81093	Location	Welding Workshop, External
RA Number	81094	Location	Main office building, attic
RA Number	81096	Location	Ladies toilets, Walls floor ceiling
RA Number	81097	Location	1st floor back hall, Sink pad
RA Number	81099	Location	Back office, Walls and ceiling
RA Number	81101	Location	Maintenance office, Walls ceiling
RA Number	81102	Location	Heaters Throughout building, Internal panel
RA Number	81104	Location	Middle office, Walls and ceiling
RA Number	81105	Location	Meeting room, Walls and ceiling
RA Number	81108	Location	Front office and server room, Walls and ceiling
RA Number	81109	Location	Front office, Walls and ceiling
RA Number	81111	Location	Stairs, stairs nosing
RA Number	81112	Location	Kitchen/diningroom, Walls floor and ceiling
RA Number	81113	Location	Kitchen, Kitchen area
RA Number	81114	Location	Men's locker room, Walls floor and ceiling
RA Number	81115	Location	Men's toilets, Walls floor and ceiling
RA Number	81116	Location	office building, external
RA Number	81117	Location	Portacabin, all areas
RA Number	81118	Location	Canteen, Walls floor and ceiling
RA Number	81119	Location	Little office, Walls floor and ceiling
RA Number	81120	Location	Store Office, Floor
RA Number	81121	Location	Store office, walls and ceiling
RA Number	81122	Location	Store, Walls floor and ceiling



Customer
Site
Survey Date
Valid Until
Commissioned By

Malone O Regan Consulting Engineers
Collins Avenue Depot
08/01/2024
08/01/2025
DCC

Type
Report Number
Surveyor
Review Date
Method

Demolition
39361
Anthony Scullion
08/01/2025
WI-02 & WI-03



Risk Register

Area(s) inspected during the survey where no ACM's where identified.

RA Number	81123	Location	Store, Walls floor and ceiling
RA Number	81124	Location	Store, Walls floor and ceiling
RA Number	81126	Location	Store/canteen, Walls floor and ceiling
RA Number	81127	Location	Garage, Walls floor and ceiling
RA Number	81128	Location	Garage, Pipework
RA Number	81129	Location	Externals, Adjacent neighboring properties
RA Number	81130	Location	Welding workshop, Walls, floor Roof
RA Number	81131	Location	ESB room, Esb room, walls floor ceiling
RA Number	81132	Location	ESB room, Esb room, Switchgear
RA Number	81133	Location	Store, Store room, Walls floor ceiling

Client and Survey Details : 8432

<p>Client : Malone O Regan Consulting Engineers</p> <p>Site : Collins Avenue Depot</p> <p>Address : Collins Avenue Dublin 9</p>	<p>Date of Survey : 08-01-2024</p> <p>Review Date : 08-01-2025</p> <p>Surveyor : Anthony Scullion</p> <p>Method : WI-02 & WI-03</p>
--	---

Location Details : 81090 No Asbestos Found

Building/Area :

Room/Section : Welding workshop

Location : Walls, floor Roof

Description : Concrete Metal

Sample No. :

Confirmation : No Asbestos Detected

Access : Full Access

Normal Use :

Recommendations :

Notes :



Location Details : 81093 No Asbestos Found

Building/Area :

Room/Section : Welding Workshop

Location : External

Description : Metal cladding and blockwork

Sample No. :

Confirmation : No Asbestos Detected

Access : Full Access

Normal Use :

Recommendations :

Notes :



Location Details : 81094 No Asbestos Found

Building/Area :

Room/Section : Main office building

Location : attic

Description : concrete timber felt

Sample No. :

Confirmation : No Asbestos Detected

Access : Full Access

Normal Use :

Recommendations :

Notes :



While every effort was taken to insure the accuracy of this report we do not accept responsibility for any omissions or areas of the building not addressed in the report. This report is intended to assist in reducing the possibility of accidents and ill health by bringing to the client's attention identified asbestos containing materials. It is not implied that all other hazards are under control at the time of inspections.

Client and Survey Details : 8432

<p>Client : Malone O Regan Consulting Engineers</p> <p>Site : Collins Avenue Depot</p> <p>Address : Collins Avenue Dublin 9</p>	<p>Date of Survey : 08-01-2024</p> <p>Review Date : 08-01-2025</p> <p>Surveyor : Anthony Scullion</p> <p>Method : WI-02 & WI-03</p>
--	---

Location Details : 81096 No Asbestos Found

Building/Area :

Room/Section : Ladies toilets

Location : Walls floor ceiling

Description : Ceramics timber

Sample No. :

Confirmation : No Asbestos Detected

Access : Full Access

Normal Use :

Recommendations :

Notes :



Location Details : 81097 No Asbestos Found

Building/Area :

Room/Section : 1st floor back hall

Location : Sink pad

Description : Bitumen pad

Sample No. : ASB20231211001

Confirmation : No Asbestos Detected

Access : Full Access

Normal Use :

Recommendations :

Notes :



Location Details : 81099 No Asbestos Found

Building/Area :

Room/Section : Back office

Location : Walls and ceiling

Description : concrete and blocks

Sample No. :

Confirmation : No Asbestos Detected

Access : Full Access

Normal Use :

Recommendations :

Notes :



While every effort was taken to insure the accuracy of this report we do not accept responsibility for any omissions or areas of the building not addressed in the report. This report is intended to assist in reducing the possibility of accidents and ill health by bringing to the client's attention identified asbestos containing materials. It is not implied that all other hazards are under control at the time of inspections.

Client and Survey Details : 8432

<p>Client : Malone O Regan Consulting Engineers</p> <p>Site : Collins Avenue Depot</p> <p>Address : Collins Avenue Dublin 9</p>	<p>Date of Survey : 08-01-2024</p> <p>Review Date : 08-01-2025</p> <p>Surveyor : Anthony Scullion</p> <p>Method : WI-02 & WI-03</p>
--	---

Location Details : 81101 No Asbestos Found

Building/Area :

Room/Section : Maintenance office

Location : Walls ceiling

Description : Blocks and plaster and concrete

Sample No. :

Confirmation : No Asbestos Detected

Access : Full Access

Normal Use :

Recommendations :

Notes :



Location Details : 81102 No Asbestos Found

Building/Area :

Room/Section : Heaters Throughout building

Location : Internal panel

Description : Fibrous panel

Sample No. : ASB20231211003

Confirmation : No Asbestos Detected

Access : Full Access

Normal Use :

Recommendations :

Notes :



Location Details : 81104 No Asbestos Found

Building/Area :

Room/Section : Middle office

Location : Walls and ceiling

Description : Plasterboard and concrete

Sample No. :

Confirmation : No Asbestos Detected

Access : Full Access

Normal Use :

Recommendations :

Notes :



While every effort was taken to insure the accuracy of this report we do not accept responsibility for any omissions or areas of the building not addressed in the report. This report is intended to assist in reducing the possibility of accidents and ill health by bringing to the client's attention identified asbestos containing materials. It is not implied that all other hazards are under control at the time of inspections.

Client and Survey Details : 8432

<p>Client : Malone O Regan Consulting Engineers</p> <p>Site : Collins Avenue Depot</p> <p>Address : Collins Avenue Dublin 9</p>	<p>Date of Survey : 08-01-2024</p> <p>Review Date : 08-01-2025</p> <p>Surveyor : Anthony Scullion</p> <p>Method : WI-02 & WI-03</p>
--	---

Location Details : 81105 No Asbestos Found

Building/Area :

Room/Section : Meeting room

Location : Walls and ceiling

Description : Concrete and plasterboard

Sample No. :

Confirmation : No Asbestos Detected

Access : Full Access

Normal Use :

Recommendations :

Notes :



Location Details : 81108 No Asbestos Found

Building/Area :

Room/Section : Front office and server room

Location : Walls and ceiling

Description : Concrete and plasterboard

Sample No. :

Confirmation : No Asbestos Detected

Access : Full Access

Normal Use :

Recommendations :

Notes :



Location Details : 81109 No Asbestos Found

Building/Area :

Room/Section : Front office

Location : Walls and ceiling

Description : Concrete and plasterboard

Sample No. :

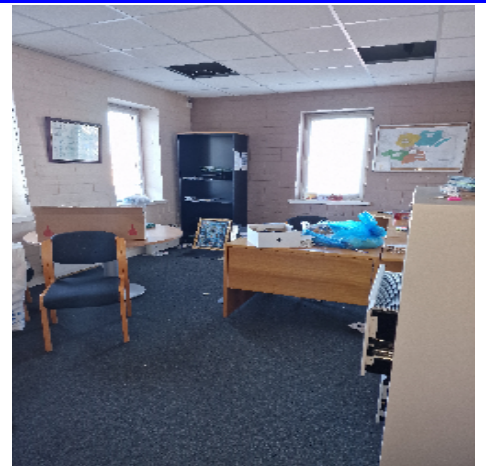
Confirmation : No Asbestos Detected

Access : Full Access

Normal Use :

Recommendations :

Notes :

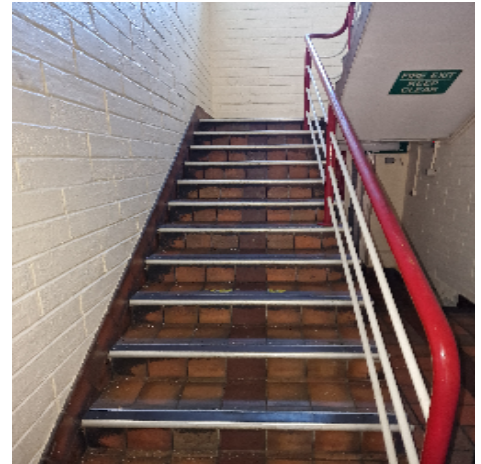


Client and Survey Details : 8432

Client : Malone O Regan Consulting Engineers	Date of Survey : 08-01-2024
Site : Collins Avenue Depot	Review Date : 08-01-2025
Address : Collins Avenue	Surveyor : Anthony Scullion
Dublin 9	Method : WI-02 & WI-03

Location Details : 81111 No Asbestos Found

Building/Area :
 Room/Section : Stairs
 Location : stairs nosing
 Description : plastic resin
 Sample No. : ASB20231211005
 Confirmation : Sample Taken
 Access : Full Access
 Normal Use :
 Recommendations :
 Notes :



Location Details : 81112 No Asbestos Found

Building/Area :
 Room/Section : Kitchen/diningroom
 Location : Walls floor and ceiling
 Description : ceramics and concrete
 Sample No. :
 Confirmation : No Asbestos Detected
 Access : Full Access
 Normal Use :
 Recommendations :
 Notes :



Location Details : 81113 No Asbestos Found

Building/Area :
 Room/Section : Kitchen
 Location : Kitchen area
 Description : stainless steel
 Sample No. :
 Confirmation : No Asbestos Detected
 Access : Full Access
 Normal Use :
 Recommendations :
 Notes :



While every effort was taken to insure the accuracy of this report we do not accept responsibility for any omissions or areas of the building not addressed in the report. This report is intended to assist in reducing the possibility of accidents and ill health by bringing to the client's attention identified asbestos containing materials. It is not implied that all other hazards are under control at the time of inspections.

Client and Survey Details : 8432

<p>Client : Malone O Regan Consulting Engineers</p> <p>Site : Collins Avenue Depot</p> <p>Address : Collins Avenue Dublin 9</p>	<p>Date of Survey : 08-01-2024</p> <p>Review Date : 08-01-2025</p> <p>Surveyor : Anthony Scullion</p> <p>Method : WI-02 & WI-03</p>
--	---

Location Details : 81114 No Asbestos Found

Building/Area :

Room/Section : Men's locker room

Location : Walls floor and ceiling

Description : ceramics and concrete

Sample No. :

Confirmation : No Asbestos Detected

Access : Full Access

Normal Use :

Recommendations :

Notes :



Location Details : 81115 No Asbestos Found

Building/Area :

Room/Section : Men's toilets

Location : Walls floor and ceiling

Description : ceramics and concrete

Sample No. :

Confirmation : No Asbestos Detected

Access : Full Access

Normal Use :

Recommendations :

Notes :



Location Details : 81116 No Asbestos Found

Building/Area :

Room/Section : office building

Location : external

Description : block and roof tiles

Sample No. :

Confirmation : No Asbestos Detected

Access : Full Access

Normal Use :

Recommendations :

Notes :



While every effort was taken to insure the accuracy of this report we do not accept responsibility for any omissions or areas of the building not addressed in the report. This report is intended to assist in reducing the possibility of accidents and ill health by bringing to the client's attention identified asbestos containing materials. It is not implied that all other hazards are under control at the time of inspections.

Client and Survey Details : 8432

<p>Client : Malone O Regan Consulting Engineers</p> <p>Site : Collins Avenue Depot</p> <p>Address : Collins Avenue Dublin 9</p>	<p>Date of Survey : 08-01-2024</p> <p>Review Date : 08-01-2025</p> <p>Surveyor : Anthony Scullion</p> <p>Method : WI-02 & WI-03</p>
--	---

Location Details : 81117 No Asbestos Found

Building/Area :

Room/Section : Portacabin

Location : all areas

Description : wood

Sample No. :

Confirmation : No Asbestos Detected

Access : Full Access

Normal Use :

Recommendations :

Notes :



Location Details : 81118 No Asbestos Found

Building/Area :

Room/Section : Canteen

Location : Walls floor and ceiling

Description : ceramics and concrete

Sample No. :

Confirmation : No Asbestos Detected

Access : Full Access

Normal Use :

Recommendations :

Notes :



Location Details : 81119 No Asbestos Found

Building/Area :

Room/Section : Little office

Location : Walls floor and ceiling

Description : ceramics and concrete

Sample No. :

Confirmation : No Asbestos Detected

Access : Full Access

Normal Use :

Recommendations :

Notes :



While every effort was taken to insure the accuracy of this report we do not accept responsibility for any omissions or areas of the building not addressed in the report. This report is intended to assist in reducing the possibility of accidents and ill health by bringing to the client's attention identified asbestos containing materials. It is not implied that all other hazards are under control at the time of inspections.

Client and Survey Details : 8432

Client : Malone O Regan Consulting Engineers	Date of Survey : 08-01-2024
Site : Collins Avenue Depot	Review Date : 08-01-2025
Address : Collins Avenue	Surveyor : Anthony Scullion
Dublin 9	Method : WI-02 & WI-03

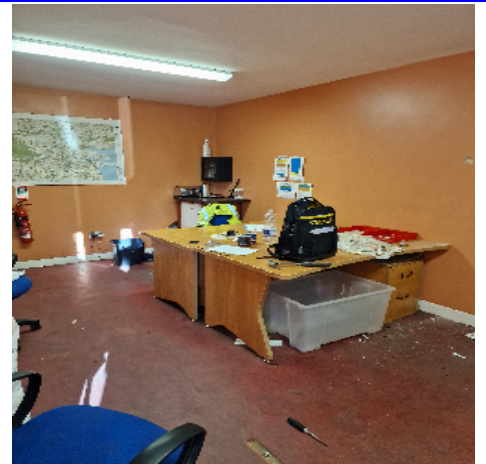
Location Details : 81120 No Asbestos Found

Building/Area :
 Room/Section : Store Office
 Location : Floor
 Description : vft and bitumen
 Sample No. : ASB20231211006
 Confirmation : Sample Taken
 Access : Full Access
 Normal Use :
 Recommendations :
 Notes :



Location Details : 81121 No Asbestos Found

Building/Area :
 Room/Section : Store office
 Location : walls and ceiling
 Description : plasterboard
 Sample No. :
 Confirmation : No Asbestos Detected
 Access : Full Access
 Normal Use :
 Recommendations :
 Notes :



Location Details : 81122 No Asbestos Found

Building/Area :
 Room/Section : Store
 Location : Walls floor and ceiling
 Description : ceramics and concrete
 Sample No. :
 Confirmation : No Asbestos Detected
 Access : Full Access
 Normal Use :
 Recommendations :
 Notes :



While every effort was taken to insure the accuracy of this report we do not accept responsibility for any omissions or areas of the building not addressed in the report. This report is intended to assist in reducing the possibility of accidents and ill health by bringing to the client's attention identified asbestos containing materials. It is not implied that all other hazards are under control at the time of inspections.

Client and Survey Details : 8432

Client : Malone O Regan Consulting Engineers	Date of Survey : 08-01-2024
Site : Collins Avenue Depot	Review Date : 08-01-2025
Address : Collins Avenue	Surveyor : Anthony Scullion
Dublin 9	Method : WI-02 & WI-03

Location Details : 81123 No Asbestos Found

Building/Area :
 Room/Section : Store
 Location : Walls floor and ceiling
 Description : concrete
 Sample No. :
 Confirmation : No Asbestos Detected
 Access : Full Access
 Normal Use :
 Recommendations :
 Notes :



Location Details : 81124 No Asbestos Found

Building/Area :
 Room/Section : Store
 Location : Walls floor and ceiling
 Description : concrete
 Sample No. :
 Confirmation : No Asbestos Detected
 Access : Full Access
 Normal Use :
 Recommendations :
 Notes :



Location Details : 81126 No Asbestos Found

Building/Area :
 Room/Section : Store/canteen
 Location : Walls floor and ceiling
 Description : concrete
 Sample No. :
 Confirmation : No Asbestos Detected
 Access : Full Access
 Normal Use :
 Recommendations :
 Notes :



While every effort was taken to insure the accuracy of this report we do not accept responsibility for any omissions or areas of the building not addressed in the report. This report is intended to assist in reducing the possibility of accidents and ill health by bringing to the client's attention identified asbestos containing materials. It is not implied that all other hazards are under control at the time of inspections.

Client and Survey Details : 8432

<p>Client : Malone O Regan Consulting Engineers</p> <p>Site : Collins Avenue Depot</p> <p>Address : Collins Avenue Dublin 9</p>	<p>Date of Survey : 08-01-2024</p> <p>Review Date : 08-01-2025</p> <p>Surveyor : Anthony Scullion</p> <p>Method : WI-02 & WI-03</p>
--	---

Location Details : 81127 No Asbestos Found

Building/Area :

Room/Section : Garage

Location : Walls floor and ceiling

Description : concrete

Sample No. :

Confirmation : No Asbestos Detected

Access : Full Access

Normal Use :

Recommendations :

Notes :



Location Details : 81128 No Asbestos Found

Building/Area :

Room/Section : Garage

Location : Pipework

Description : MMMF foil

Sample No. :

Confirmation : No Asbestos Detected

Access : Full Access

Normal Use :

Recommendations :

Notes :



Location Details : 81129 No Asbestos Found

Building/Area :

Room/Section : Externals

Location : Adjacent neighboring properties

Description : Debris

Sample No. :

Confirmation : No Asbestos Detected

Access : Full Access

Normal Use :

Recommendations :

Notes :



While every effort was taken to insure the accuracy of this report we do not accept responsibility for any omissions or areas of the building not addressed in the report. This report is intended to assist in reducing the possibility of accidents and ill health by bringing to the client's attention identified asbestos containing materials. It is not implied that all other hazards are under control at the time of inspections.

Client and Survey Details : 8432

Client : Malone O Regan Consulting Engineers	Date of Survey : 08-01-2024
Site : Collins Avenue Depot	Review Date : 08-01-2025
Address : Collins Avenue	Surveyor : Anthony Scullion
Dublin 9	Method : WI-02 & WI-03

Location Details : 81130 No Asbestos Found

Building/Area :
 Room/Section : Welding workshop
 Location : Walls, floor Roof
 Description : Concrete Metal
 Sample No. :
 Confirmation : No Asbestos Detected
 Access : Full Access
 Normal Use :
 Recommendations :
 Notes :

Location Details : 81131 No Asbestos Found

Building/Area : ESB room
 Room/Section : Esb room
 Location : walls floor ceiling
 Description : Concrete blocks
 Sample No. :
 Confirmation : No Asbestos Detected
 Access : Full Access
 Normal Use :
 Recommendations :
 Notes :



Location Details : 81132 No Asbestos Found

Building/Area : ESB room
 Room/Section : Esb room
 Location : Switchgear
 Description : modern switchgear
 Sample No. :
 Confirmation : No Asbestos Detected
 Access : Full Access
 Normal Use :
 Recommendations :
 Notes :



While every effort was taken to insure the accuracy of this report we do not accept responsibility for any omissions or areas of the building not addressed in the report. This report is intended to assist in reducing the possibility of accidents and ill health by bringing to the client's attention identified asbestos containing materials. It is not implied that all other hazards are under control at the time of inspections.

Materials Risk Assessment Demolition in accordance with HSG264

5C Fingal Bay Business Park, Harry Reynolds Road, Balbriggan, Co. Dublin Tel: (01) 6905907 Fax: (01) 8020439 Email: info@ohss.ie Website: www.ohss.ie

Client and Survey Details : 8432

<p>Client : Malone O Regan Consulting Engineers</p> <p>Site : Collins Avenue Depot</p> <p>Address : Collins Avenue Dublin 9</p>	<p>Date of Survey : 08-01-2024</p> <p>Review Date : 08-01-2025</p> <p>Surveyor : Anthony Scullion</p> <p>Method : WI-02 & WI-03</p>
--	---

Location Details : 81133 No Asbestos Found

Building/Area : Store

Room/Section : Store room

Location : Walls floor ceiling

Description : Blocks and concrete

Sample No. :

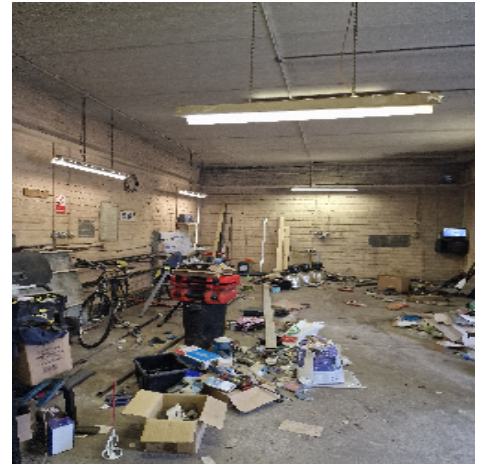
Confirmation : No Asbestos Detected

Access : Full Access

Normal Use :

Recommendations :

Notes :



While every effort was taken to insure the accuracy of this report we do not accept responsibility for any omissions or areas of the building not addressed in the report. This report is intended to assist in reducing the possibility of accidents and ill health by bringing to the client's attention identified asbestos containing materials. It is not implied that all other hazards are under control at the time of inspections.

Test Certificate

Certificate Number: 001071

Printed: 16-Jan-24

Client Details

Malone O Regan Consulting Engineers

Site Details

Collins Avenue Depot
Collins Avenue
Dublin 9

Job No:

39361

Date Received:

09-Jan-24

Date Tested:

09-Jan-24

Date Reported:

16-Jan-24

No. of Samples:

8

Specification:

WI 05

Samples taken by: OHSS

Bulk Identification of Asbestos in Materials

Sample	Description	Asbestos Detected	Asbestos Type
ASB20231211001	Bitumen pad from 1st floor back hall Sink pad	Not detected	
ASB20231211002	VFT from Back office Floor	Not detected	
ASB20231211002/1	Bitumen on VFT from Back office Floor	Present	Chrysotile
ASB20231211003	Fibrous panel from Heaters Throughout building Internal panel	Not detected	
ASB20231211004	VFT from Front office Floor	Not detected	
ASB20231211004/1	Bitumen on VFT from Front office Floor	Present	Chrysotile
ASB20231211005	Plastic resin nosing from from Stairs	Not detected	
ASB20231211006	VFT and bitumen from Store Office Floor	Not detected	

Comments / Deviations from Standard Methods

Requested via portal survey

- The Bulk sample(s) referred to above were analysed for asbestos content using dispersion staining and polarised light microscopy in accordance with the requirements of HSG 248 and using OHSS Documented Work Instruction –WI 05 Bulk Sampling Analysis.
- Any work (removal, repair etc.) involving asbestos containing materials must be carried out in accordance with the Safety Health and Welfare at Work (Exposure to Asbestos) Regulations 2006-2010 and all other relevant national legislation.
- In the case of samples supplied by the client, Occupational Hygiene and Safety Services Ltd. (OHSS) cannot accept responsibility for the sampling strategies employed and the sampling information supplied to OHSS. OHSS cannot accept responsibility for the interpretation of the sampling information contained in this report by any parties. Deviations to our standard methods, where agreed with the client are noted in the Comments section above.
- Comments, observations and opinions are outside the scope of certification.

Analyst : Frances Shaw

Signed :

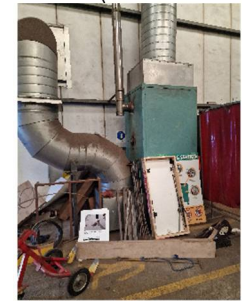
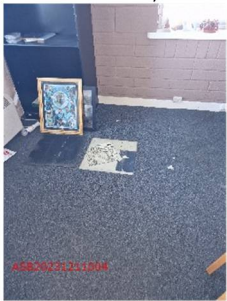
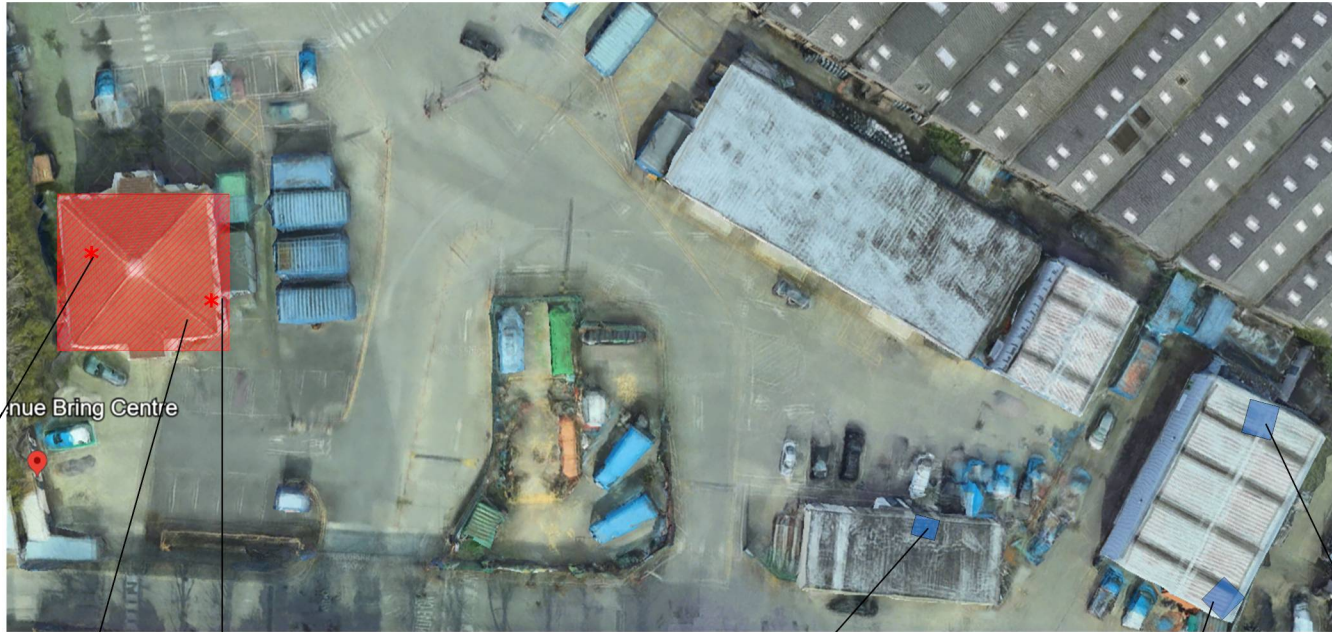



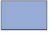

Frances Shaw

For and on authority of OHSS



Drawings



Drawing Legend		Drawing Revisions		Date	Scale	Project Number
Contains Asbestos		Not Accessed Presumed To Contain Asbestos		08/01/24	This drawing is for illustration purposes only	39361
Sample Point Location	*	No Access Under Fixed Floor Coverings Investigate Prior To Disturbance				Drawn By
				1 of 1		Anthony Scullion

**Collins Avenue Depot
Bring Centre
Collins Avenue
Dublin**

