

IRISH WATER APPLICABLE DETAILS (NON-EXHAUSTIVE LIST) WASTE WATER DETAILS - TABLE

Table with 2 columns: Detail ID (e.g., STD-WW-01) and Description (e.g., WASTEWATER SERVICES CONNECTION MAINTENANCE RESPONSIBILITY).

LEGEND: Symbols and line styles for various drainage components like foul lines, manholes, and gullies.

DRAINAGE NOTES

- 1. ALL FOUL WORKS TO BE IN ACCORDANCE WITH IRISH WATER CODE OF PRACTICE DOCUMENT IW-CDS-5030-03... 2. ALL FOUL WATER DRAINAGE RUNS ARE TO A GRADE OF 1:150 AND PIPE SIZE OF 225mm UNLESS OTHERWISE STATED...

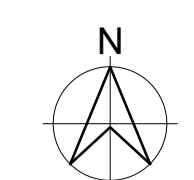
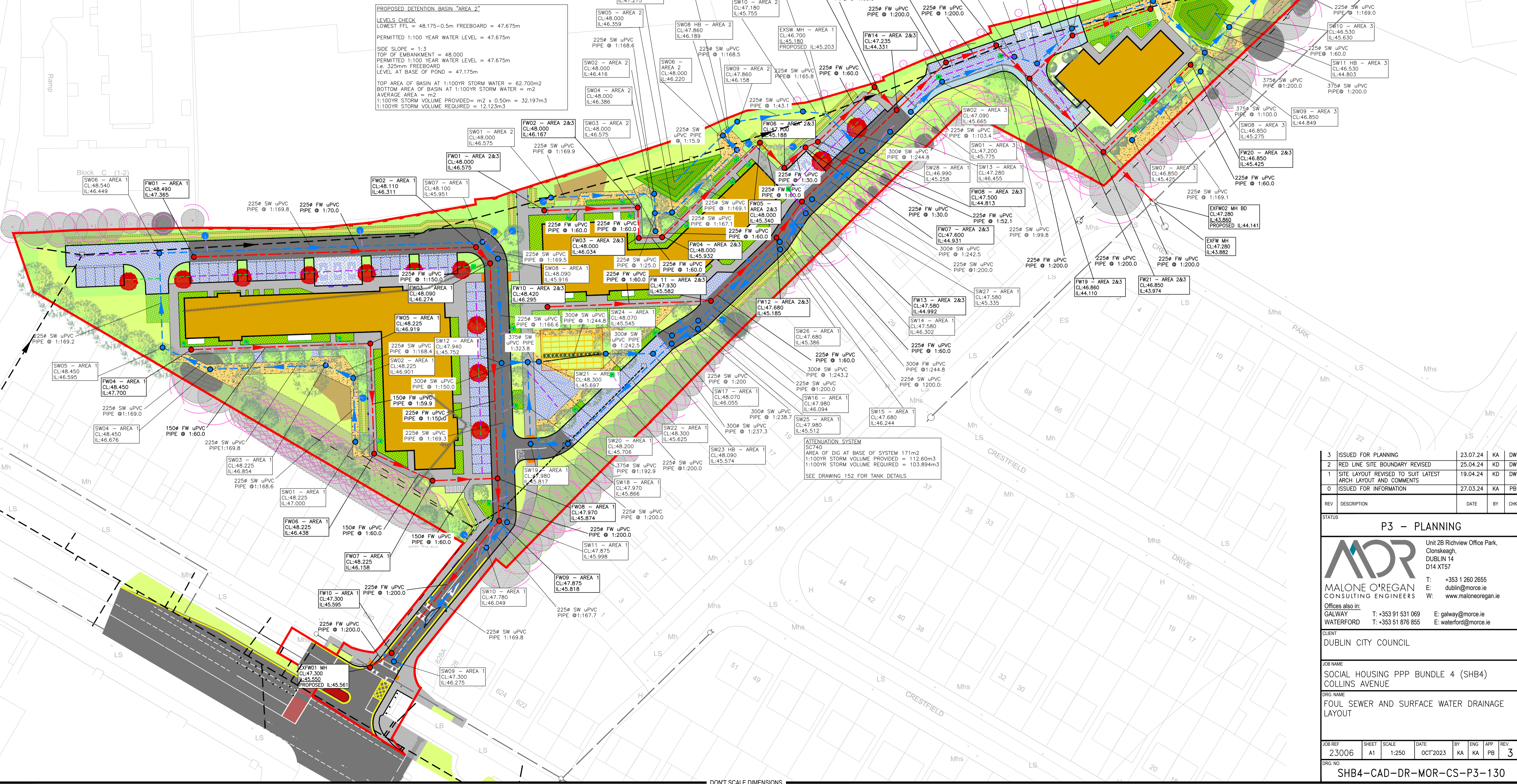


Table with 3 columns: BY (e.g., SURVEY), DRAWING No. & REFERENCE, and DATE.

NO PART OF THIS DRAWING IS TO BE REPRODUCED OR TRANSMITTED IN ANY FORM OR STORED IN ANY RETRIEVAL SYSTEM OF ANY NATURE WITHOUT THE WRITTEN PERMISSION OF MALONE O'REGAN CONSULTING ENGINEERS AS COPYRIGHT HOLDER...



PROPOSED DETENTION BASIN 'AREA 2' LEVELS CHECK: LOWEST FFL = 48.175-0.5m FREEBOARD = 47.675m. PERMITTED 1:100 YEAR WATER LEVEL = 47.675m.

ATTENUATION SYSTEM: AREA OF DIG AT BASE OF SYSTEM 171m2. 1:100YR STORM VOLUME PROVIDED = 112.60m3.

LOWEST FFL = 47.000m-0.5m FREEBOARD = 46.500m. PERMITTED 1:100 YEAR WATER LEVEL = 46.220m.

TOP OF EMBANKMENT = 46.530m. 1:100 YEAR WATER LEVEL = 46.220m. LEVEL AT BASE OF POND = 45.620m.

Revision table with columns: REV, DESCRIPTION, DATE, BY, CHK.

Project information including P3 - PLANNING, MDR MALONE O'REGAN CONSULTING ENGINEERS, and Dublin City Council details.