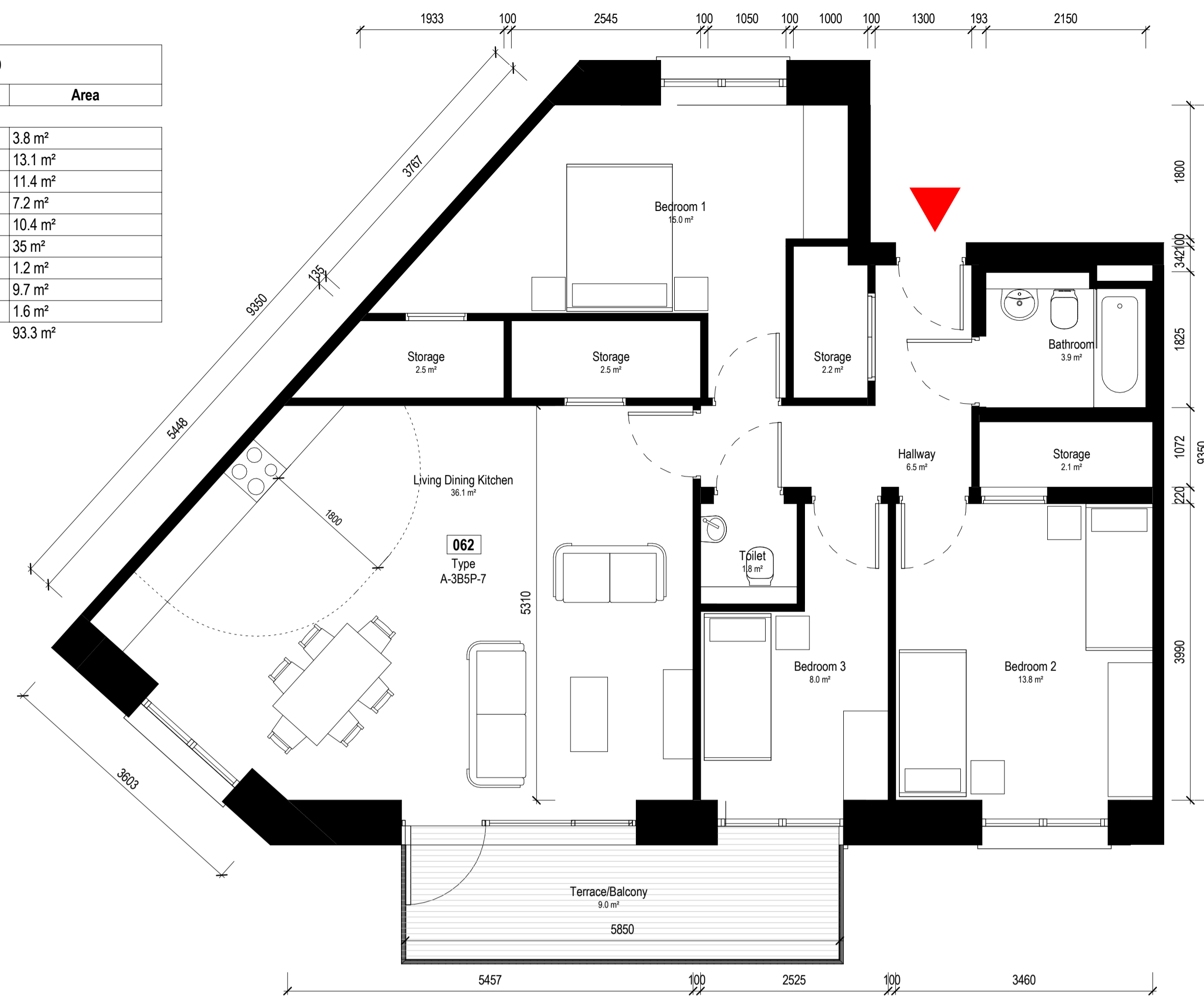
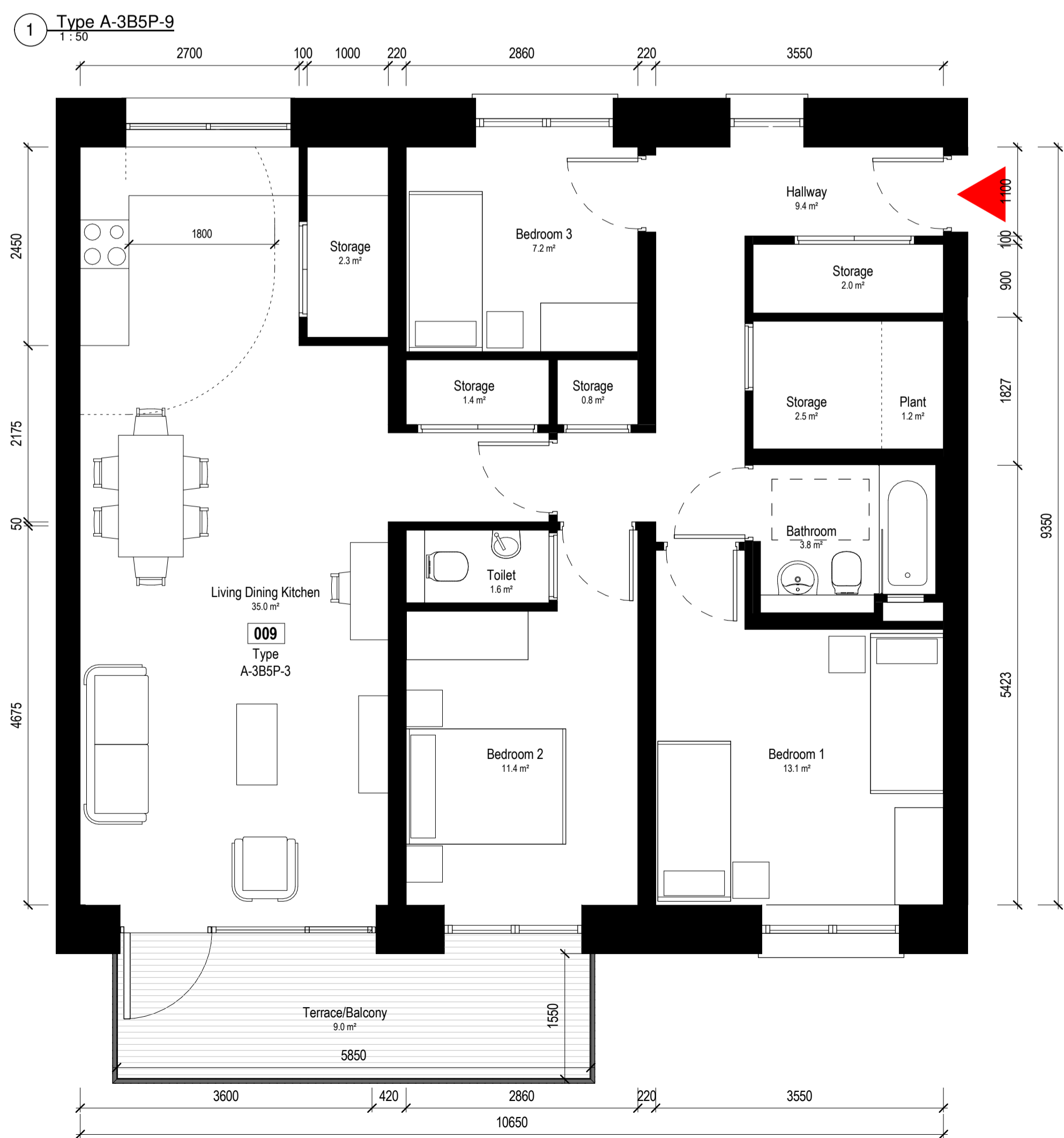




Type A-3B5P-9		
Name	Min Area	Area
Bathroom		3.8 m <sup>2</sup>
Bedroom 1	13 m <sup>2</sup>	13.1 m <sup>2</sup>
Bedroom 2	11.4 m <sup>2</sup>	11.4 m <sup>2</sup>
Bedroom 3	7.1 m <sup>2</sup>	7.2 m <sup>2</sup>
Hallway		10.4 m <sup>2</sup>
Living Dining Kitchen	34 m <sup>2</sup>	35 m <sup>2</sup>
Plant		1.2 m <sup>2</sup>
Storage	9 m <sup>2</sup>	9.7 m <sup>2</sup>
Toilet		1.6 m <sup>2</sup>
Grand total		93.3 m <sup>2</sup>



Type A-3B5P-7		
Name	Min Area	Area
Bathroom		3.9 m <sup>2</sup>
Bedroom 1	13 m <sup>2</sup>	15 m <sup>2</sup>
Bedroom 2	11.4 m <sup>2</sup>	13.8 m <sup>2</sup>
Bedroom 3	7.1 m <sup>2</sup>	8 m <sup>2</sup>
Hallway		6.5 m <sup>2</sup>
Living Dining Kitchen	34 m <sup>2</sup>	36.1 m <sup>2</sup>
Storage	9 m <sup>2</sup>	9.3 m <sup>2</sup>
Terrace/Balcony	9 m <sup>2</sup>	9 m <sup>2</sup>
Toilet	9 m <sup>2</sup>	1.8 m <sup>2</sup>
Grand total		103.3 m <sup>2</sup>



Type A-3B5P-3		
Name	Min Area	Area
Bathroom		3.8 m <sup>2</sup>
Bedroom 1	13 m <sup>2</sup>	13.1 m <sup>2</sup>
Bedroom 2	11.4 m <sup>2</sup>	11.4 m <sup>2</sup>
Bedroom 3	7.1 m <sup>2</sup>	7.2 m <sup>2</sup>
Hallway		9.4 m <sup>2</sup>
Living Dining Kitchen	34 m <sup>2</sup>	35 m <sup>2</sup>
Plant		1.2 m <sup>2</sup>
Storage	9 m <sup>2</sup>	9.1 m <sup>2</sup>
Terrace/Balcony	11.4 m <sup>2</sup>	9 m <sup>2</sup>
Toilet		1.6 m <sup>2</sup>
Grand total		100.7 m <sup>2</sup>

010  
Type  
A-1B2P-2



2 Type A-3B5P-7  
1:50

Notes:  
Do not scale from this drawing.  
Use figured dimensions only.  
All errors and omissions to be reported to the Architect.  
This drawing to be read in conjunction with relevant consultant's drawings.  
All dimensions are in millimetres and all levels are in meters to match Datum unless otherwise noted.  
Contractor Design Responsibility  
It is noted that there are many elements within the works that require contractor design, and will be subject to certification as part of BCAR - see Preliminary Inspection Plan for clarity on certification required.  
© This drawing or design may not be reproduced without permission.

Revisions:

1	Pre-Part 8 Submission	19-04-2024	MM
2	Part 8 Planning Submission	19-07-2024	MM
Rev	Description	Date	By

Project:  
**PPP SHB 4 - Collins Avenue**

Client:  
**National Development Finance Agency and Dublin City Council**

Title:  
**Apartment Layouts 03**

Drawing / Document Name:  
Project Number Project Site Type Originator Role Status Sheet Number  
**2771 SHB4-CAD-DR-COA-AR-P3- 5555**

Suitability Status : Purpose Code - Definition Revision:  
**P3 - For Planning 2**

Scale @ A1 Drawn: Checked: Date:  
1 : 50 Mark McCormack Paul Lennon 19/04/2024

**COADY**  
ARCHITECTS

Mt Pleasant Business Ctr, Ranelagh, Dublin 6, D06 XTP8  
Unit 8A Cran Point, Main St, Crammore, Co. Galway  
01 497 6786 | 091 786 925 | admin@coady.ie | www.coady.ie