

Type A-1B2P-1		
Name	Min Area	Area
Balcony	5.0 m <sup>2</sup>	5.0 m <sup>2</sup>
Bathroom	3.8 m <sup>2</sup>	3.8 m <sup>2</sup>
Bedroom	11.4 m <sup>2</sup>	11.8 m <sup>2</sup>
Hall	3.8 m <sup>2</sup>	3.8 m <sup>2</sup>
Kitchen/Living/Dining	23.0 m <sup>2</sup>	23.0 m <sup>2</sup>
Plant	1.2 m <sup>2</sup>	1.2 m <sup>2</sup>
Store	3.0 m <sup>2</sup>	3.1 m <sup>2</sup>
<b>Grand total</b>		<b>51.6 m<sup>2</sup></b>

1 A-1B2P-1  
1:50



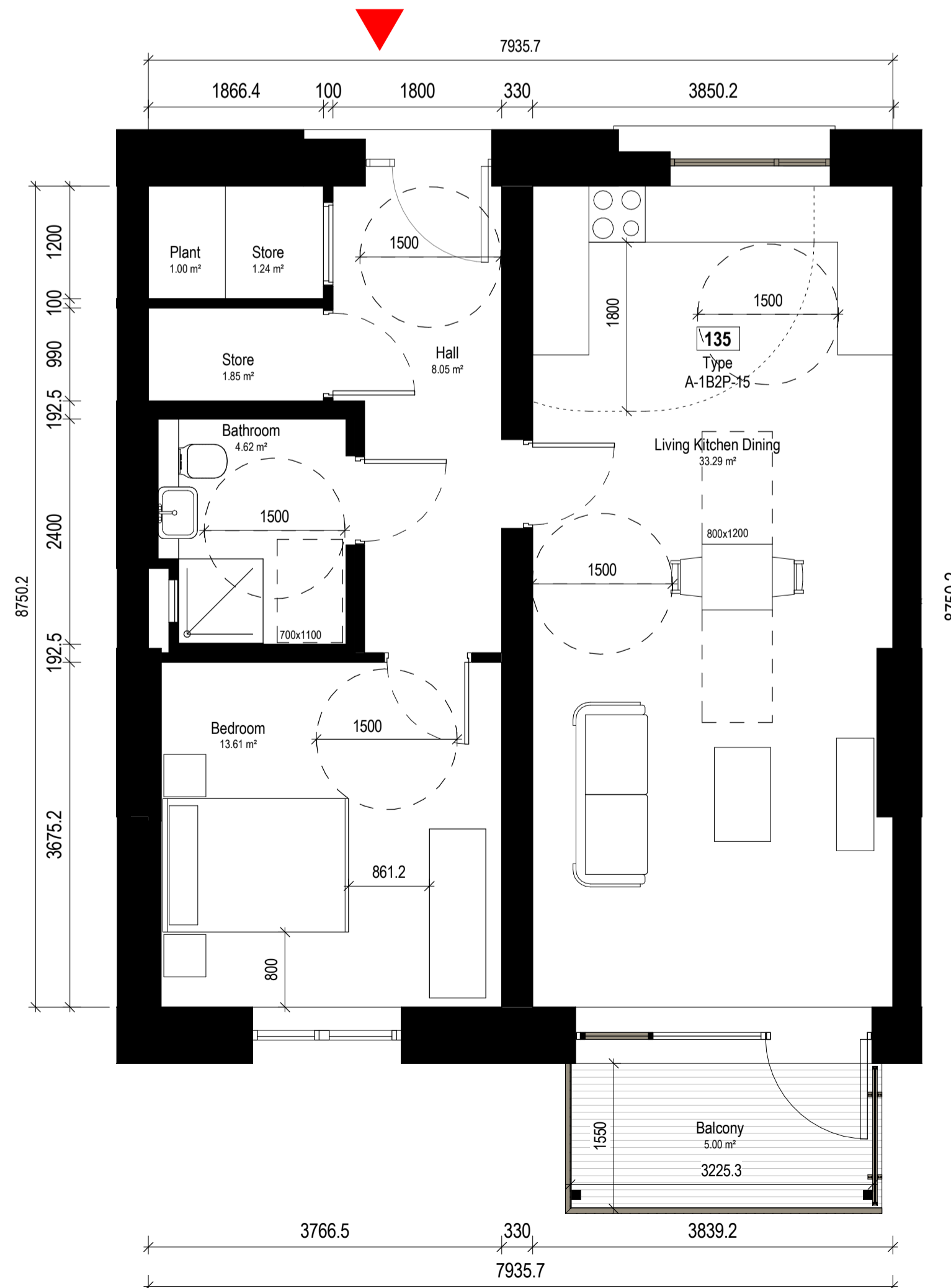
Type A-1B2P-2		
Name	Min Area	Area
Balcony	5.0 m <sup>2</sup>	11.9 m <sup>2</sup>
Bathroom	4.6 m <sup>2</sup>	4.6 m <sup>2</sup>
Bedroom	11.4 m <sup>2</sup>	13.2 m <sup>2</sup>
Hall	4.7 m <sup>2</sup>	4.7 m <sup>2</sup>
Kitchen/Living/Dining	23.0 m <sup>2</sup>	23.1 m <sup>2</sup>
Plant	1.2 m <sup>2</sup>	1.2 m <sup>2</sup>
Store	3.0 m <sup>2</sup>	3.0 m <sup>2</sup>
<b>Grand total</b>		<b>61.7 m<sup>2</sup></b>

2 A-1B2P-2 - UD Unit  
1:50



Type A-2B4P-2		
Name	Min Area	Area
Balcony	7.0 m <sup>2</sup>	7.4 m <sup>2</sup>
Bathroom	4.6 m <sup>2</sup>	4.6 m <sup>2</sup>
Bedroom 1	13.0 m <sup>2</sup>	13.0 m <sup>2</sup>
Bedroom 2	11.4 m <sup>2</sup>	13.0 m <sup>2</sup>
Hall	7.8 m <sup>2</sup>	7.8 m <sup>2</sup>
Kitchen/Living/Dining	30.0 m <sup>2</sup>	30.0 m <sup>2</sup>
Plant	1.2 m <sup>2</sup>	1.2 m <sup>2</sup>
Store	6.0 m <sup>2</sup>	6.0 m <sup>2</sup>
<b>Grand total</b>		<b>83.1 m<sup>2</sup></b>

3 A-2B4P-2 - UD Unit  
1:50



Type A-1B2P-15		
Name	Min Area	Area
Balcony	5.0 m <sup>2</sup>	5.0 m <sup>2</sup>
Bathroom	4.6 m <sup>2</sup>	4.6 m <sup>2</sup>
Bedroom	11.4 m <sup>2</sup>	13.6 m <sup>2</sup>
Hall	8.0 m <sup>2</sup>	8.0 m <sup>2</sup>
Living Kitchen Dining	23.0 m <sup>2</sup>	33.3 m <sup>2</sup>
Plant	1.0 m <sup>2</sup>	1.0 m <sup>2</sup>
Store	3.0 m <sup>2</sup>	3.1 m <sup>2</sup>
<b>Grand total</b>		<b>68.7 m<sup>2</sup></b>

4 A-1B2P-15 - UD Unit  
1:50

Notes:  
Do not scale from this drawing.  
Use figured dimensions only.  
All errors and omissions to be reported to the Architect.  
This drawing to be read in conjunction with relevant consultant's drawings.  
All dimensions are in millimetres and all levels are in meters to match Datum unless otherwise noted.  
Contractor Design Responsibility  
It is noted that there are many elements within the works that require contractor design, and will be subject to certification as part of BCAR - see Preliminary Inspection Plan for clarity on certification required.  
© This drawing or design may not be reproduced without permission.

Revisions:

1	Pre-Part 8 Submission	14-06-2024	GK
2	Part 8 Submission	02-10-2024	NB
Rev	Description	Date	By

Project:  
**PPP SHB 5 - Basin View Flats**

Client:  
**National Development Finance Agency & Dublin City Council**

Title:  
**Apartment Layouts 01**

Drawing / Document Name:  
Project Site Type Originator Role Status Sheet Number  
**2771 SHB5-BVF-DR-COA-AR-P3- 5673**

Suitability Status : Purpose Code - Definition Revision:  
**P3 - For Planning 2**

Scale @ A1 Drawn: Checked: Date:  
1 : 50 Gizem Kabasakal Natalia Braikowska 02-10-2024

**COADY**  
ARCHITECTS  
Mt Pleasant Business Ctr, Ranelagh, Dublin 6, D06 X7P8  
Unit 8A Oran Point, Main St, Cranmore, Co. Galway  
01 497 6786 | 091 788 925 | admin@coady.ie | www.coady.ie