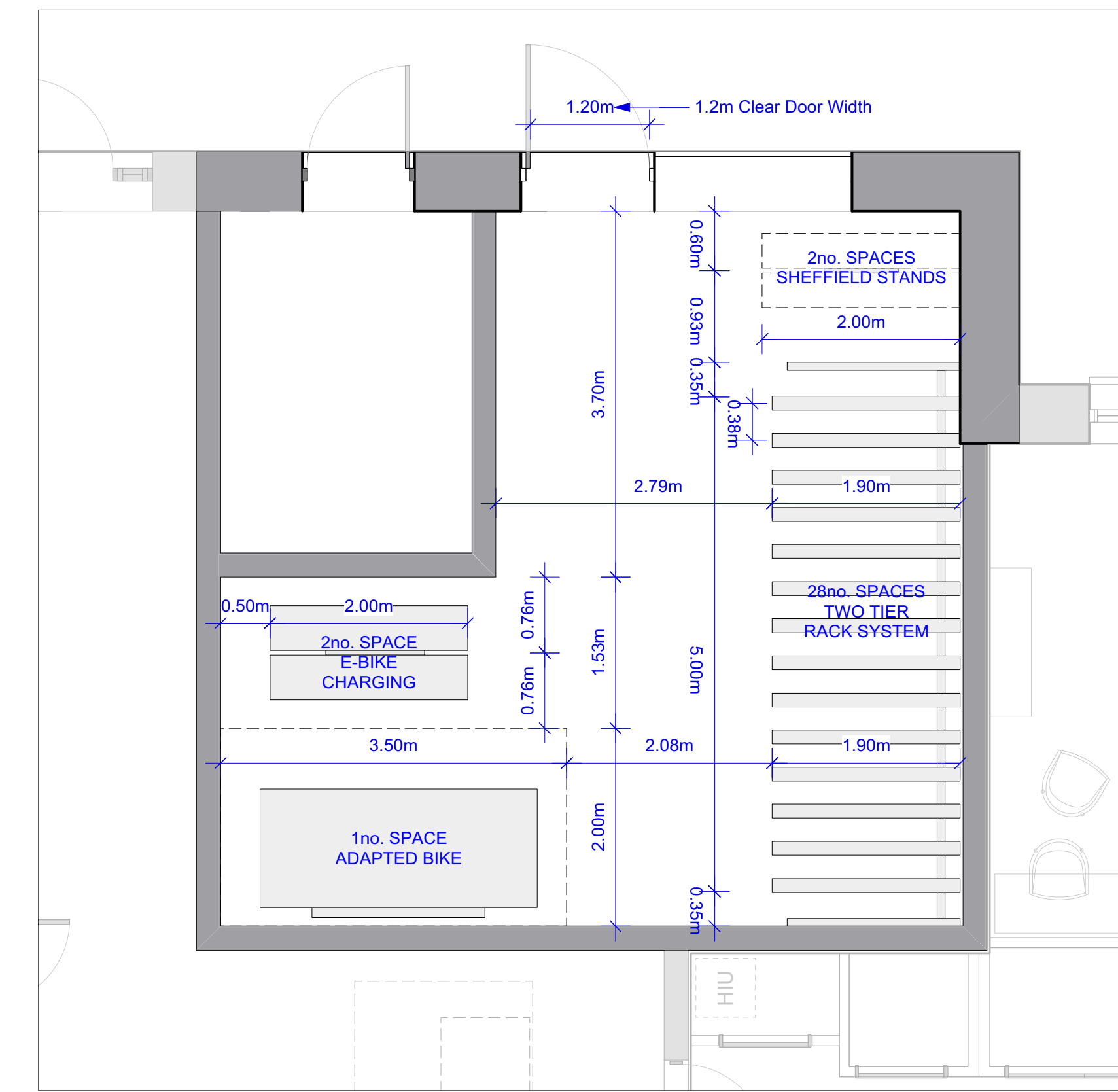
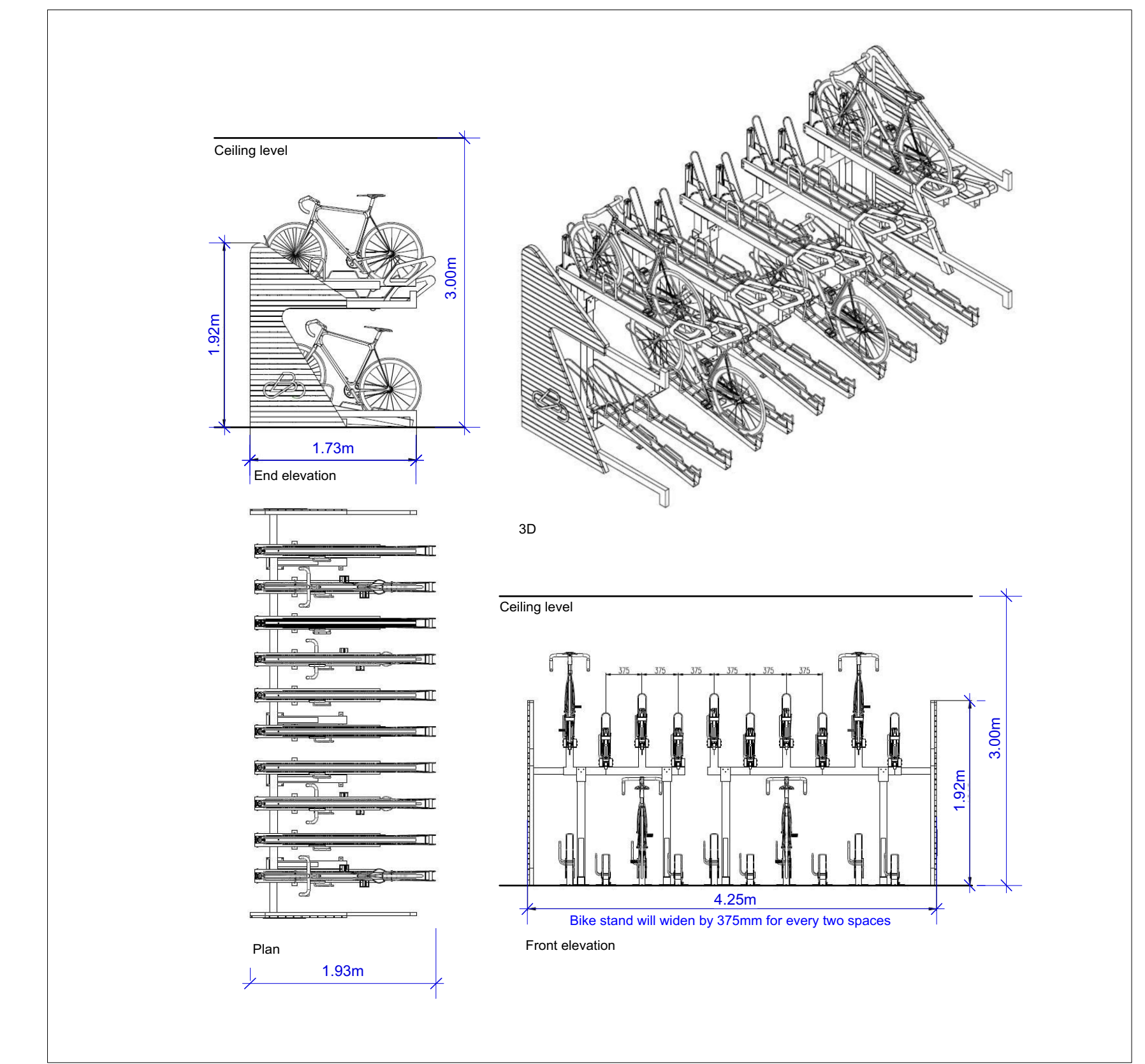


1 Cycle Store Layout (typical) - External
Scale: 1:50



2 Cycle Store Layout (typical) - Internal
Scale: 1:50



3 Sample Bike Storage Layout - Two Tier Rack System for 10 bikes
Scale: 1:50



Proposed Site Plan - Cycle Infrastructure
Scale: NTS

Legend - Planning

- Planning Application Extents
- North Point
- Long term - Residential Secure Parking
- Two Tier Stands - Long term - Residential Parking
- Adapted Bike - Long term - Residential Parking
- Sheffield Stands - Long term - Residential Parking
- E-Bike - Long term - Residential Parking
- Sheffield Stands - Short term - Visitor Parking
- Adapted bike - Short term - Visitor Parking
- Motorcycle - Short term - Visitor Parking

Cycle Parking	Total Apts	Load Required	Long term Required	Short term Required	of which cargo req.	Long term Delivered	Short term Delivered	of which cargo del.
<i>For below, load based on number of bedrooms</i>								
1B2P Apartments (General)	38	38	38	19	2	38	19	2
2B3P Apartments (General)	25	50	50	13	3	50	13	3
3B5P Apartments (General)	14	42	42	7	2	44	7	2
<i>For below, load based on total area in m2</i>								
Community, Arts & Culture	130	1	1	0	0	2	2	0
Retail	0	0	0	0	0	0	0	0
<i>For below, load based on total number of staff/children</i>								
Creche	0	0	0	0	0	134	41	7
Total numbers		131	40	7		134	41	7