

NO PART OF THIS DRAWING MAY BE REPRODUCED OR TRANSMITTED IN ANY FORM OR STORED IN ANY RETRIEVAL SYSTEM OF ANY NATURE WITHOUT THE WRITTEN PERMISSION OF MALONE O'REGAN CONSULTING ENGINEERS AS COPYRIGHT HOLDER EXCEPT AS AGREED FOR USE ON THE PROJECT FOR WHICH THE DRAWING WAS ORIGINALLY CREATED.

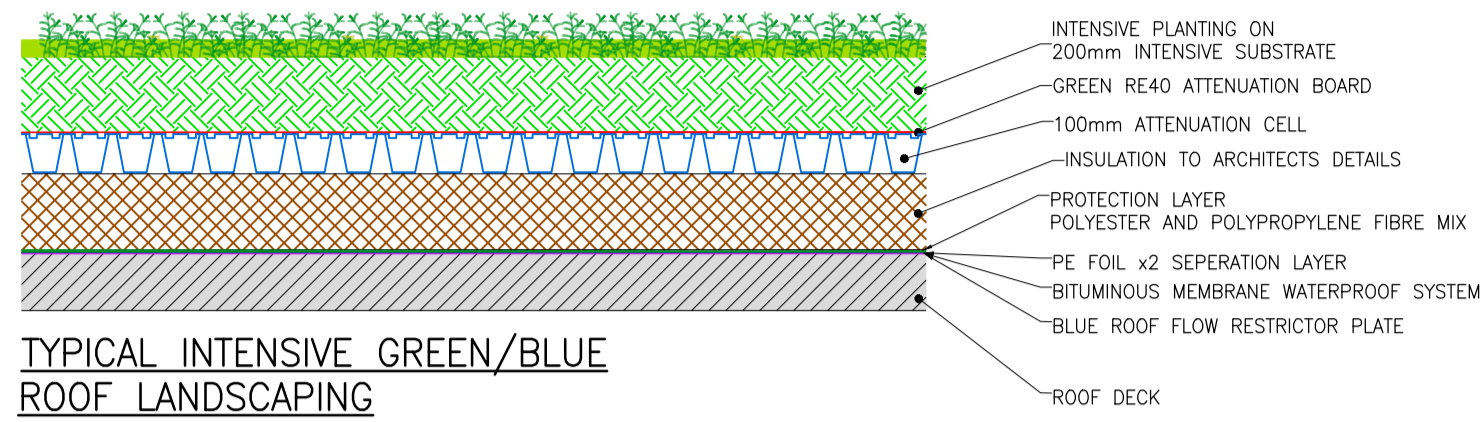
THIS DRAWING TO BE READ IN CONJUNCTION WITH ALL OTHER RELEVANT DRAWINGS, SPECIFICATIONS AND THE PRELIMINARY HEALTH & SAFETY PLAN.

ALL DIMENSIONS ARE IN mm UNLESS NOTED OTHERWISE. DO NOT SCALE DIMENSIONS.

THE CONTRACTOR SHALL CHECK ALL DIMENSIONS PRIOR TO THE COMMENCEMENT OF CONSTRUCTION. ALL DISCREPANCIES SHALL BE REPORTED TO THIS OFFICE IN WRITING.

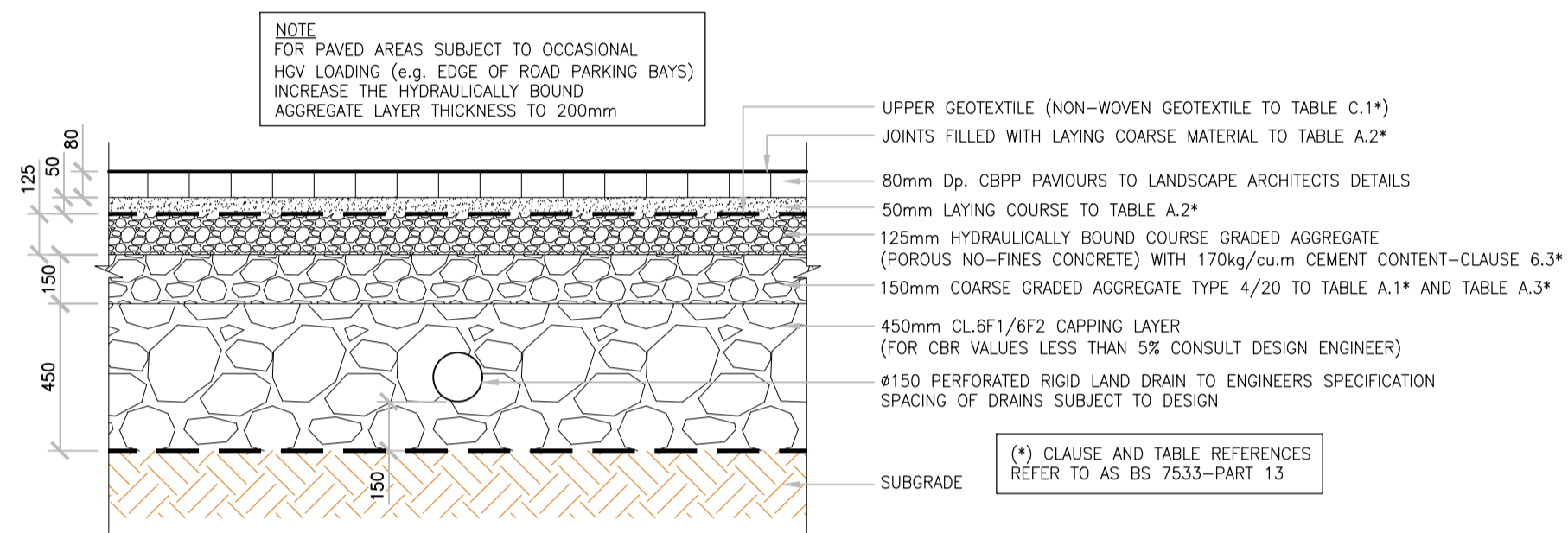
NOTES

BY	DRAWING No. & REFERENCE	DATE
SURVEY ARCH		



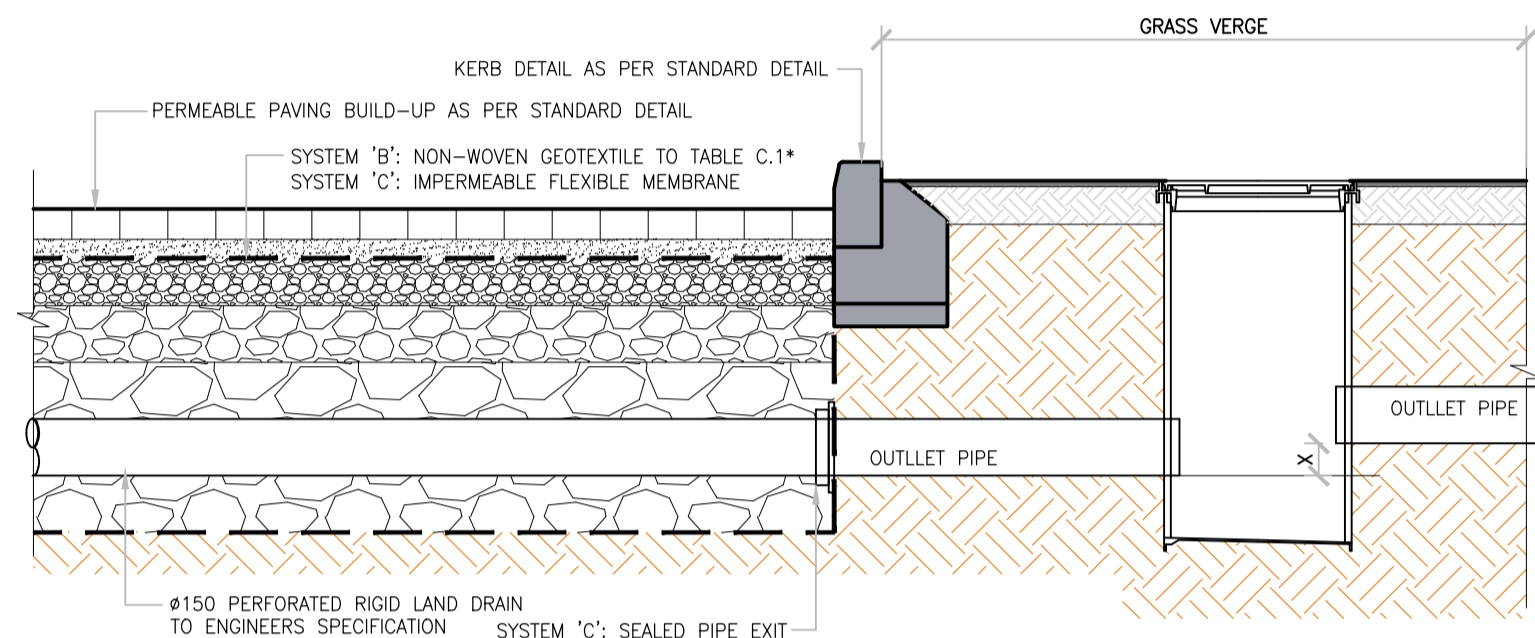
TYPICAL INTENSIVE GREEN/BLUE ROOF LANDSCAPING

SCALE 1:20



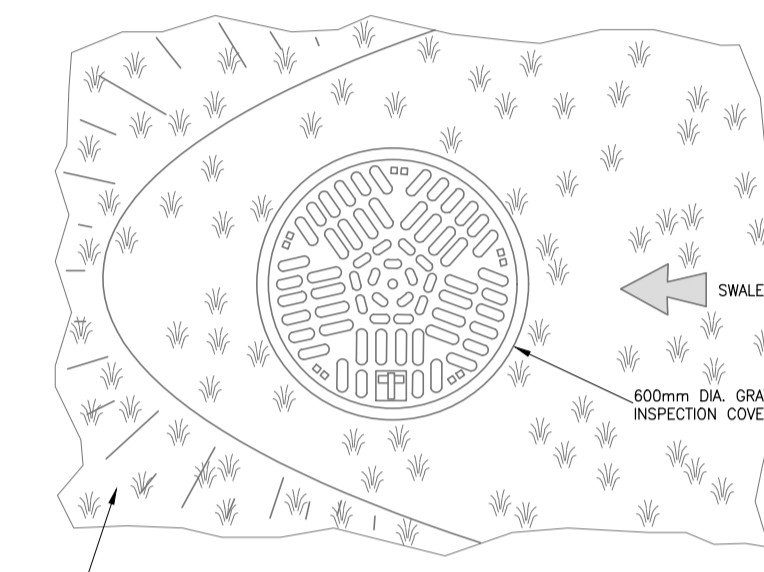
PERMEABLE PAVING

SCALE 1:20



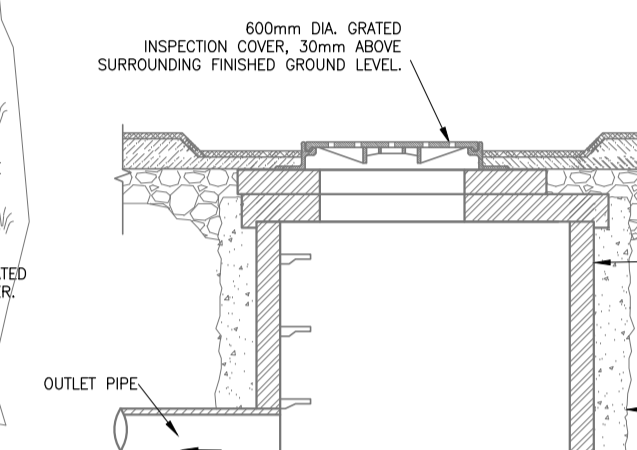
TYPICAL PERMEABLE PAVING OUTLET DETAIL

SCALE 1:20



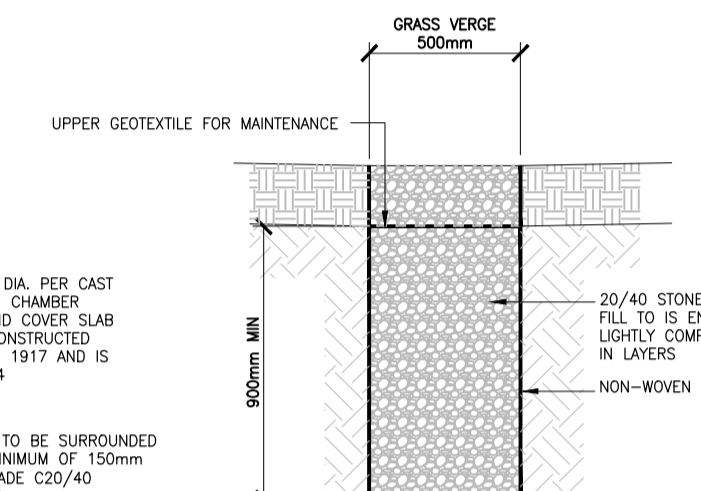
GRATED MANHOLE PLAN DETAIL D.

SCALE: N.T.S.



GRATED MANHOLE INLET CHAMBER — CROSS-SECTION

SCALE: N.T.S.



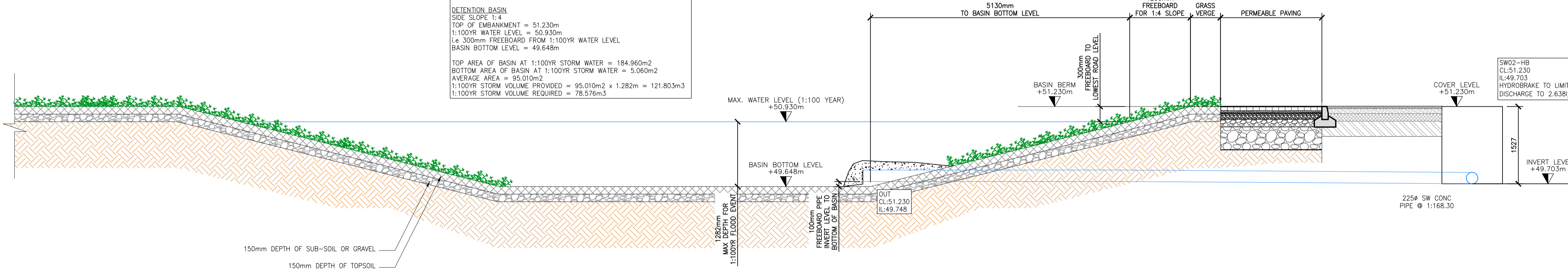
TYPICAL SECTION THROUGH RAINGARDEN/BIORETENTION AREA

SCALE 1:20

DETENTION BASIN LEVELS CHECK
 LOWEST ROAD LEVEL = 51.230m
 1:100YR WATER LEVEL i.e. 300mm FREEBOARD = 50.930m
 LOWEST FFL = 52.000m
 1:100YR WATER LEVEL i.e. 500mm FREEBOARD = 51.500m
 LET THE 1:100YR WATER LEVEL = 50.930m

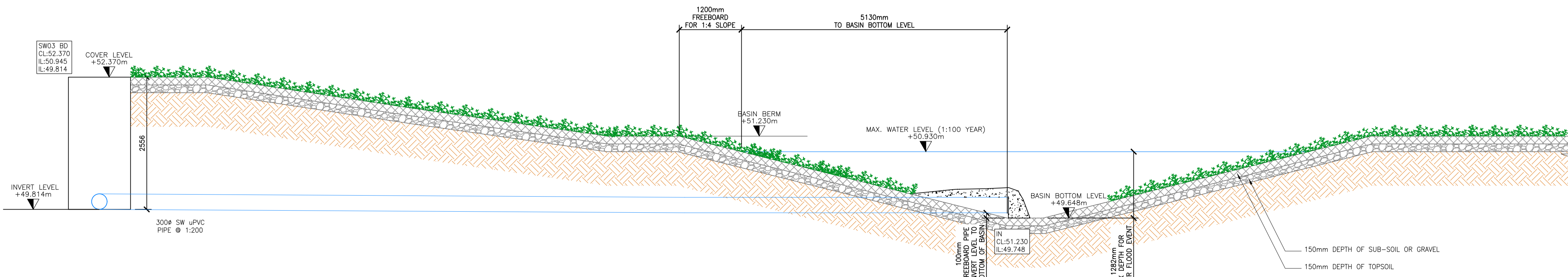
DETENTION BASIN
 SIDE SLOPE 1:4
 TOP OF EMBANKMENT = 51.230m
 1:100YR WATER LEVEL = 50.930m
 i.e. 300mm FREEBOARD FROM 1:100YR WATER LEVEL
 BASIN BOTTOM LEVEL = 49.648m

TOP AREA OF BASIN AT 1:100YR STORM WATER = 184.960m²
 BOTTOM AREA OF BASIN AT 1:100YR STORM WATER = 5.060m²
 AVERAGE AREA = 95.010m²
 1:100YR STORM VOLUME PROVIDED = 95.010m² x 1.282m = 121.803m³
 1:100YR STORM VOLUME REQUIRED = 78.576m³



DETENTION BASIN OUTLET

SCALE 1:50



DETENTION BASIN INLET

SCALE 1:50

REV	DESCRIPTION	DATE	BY	CHK
4	ISSUED FOR PLANNING	02.07.24	KA	ND
3	DETENTION BASIN SECTION AMENDED TREE PIT DETAIL REMOVED - REFER TO LANDSCAPE ARCHITECT FOR DETAIL	14.04.24	KA	ND
2	ISSUED FOR INFORMATION	20.03.24	KA	PB
1	DETENTION BASIN SECTION AMENDED	19.02.24	KA	PB
0	ISSUED FOR INFORMATION	25.01.24	KA	PB

STATUS: P3 - PLANNING

ADR
 MALONE O'REGAN
 CONSULTING ENGINEERS

Unit 2B Richview Office Park,
 Clonskeagh,
 DUBLIN 14
 D14 XT57

T: +353 1 260 2655
 E: dublin@morco.ie
 W: www.maloneoregan.ie

Offices also in:
 GALWAY T: +353 91 531 069 E: galway@morco.ie
 WATERFORD T: +353 51 876 855 E: waterford@morco.ie

CLIENT: DUBLIN CITY COUNCIL

JOB NAME: SOCIAL HOUSING BUNDLE 4, DEVELOPMENT AT WELLMOUNT ROAD, FINGLAS

DRG NAME: SUDS DRAINAGE DETAILS

JOB REF	SHEET	SCALE	DATE	BY	ENG	APP	REV.
23006	A1	SHOWN	JAN' 24	KA	KA	PB	4

DRG NO: SHB4-WRF-DR-MOR-CS-P3-151