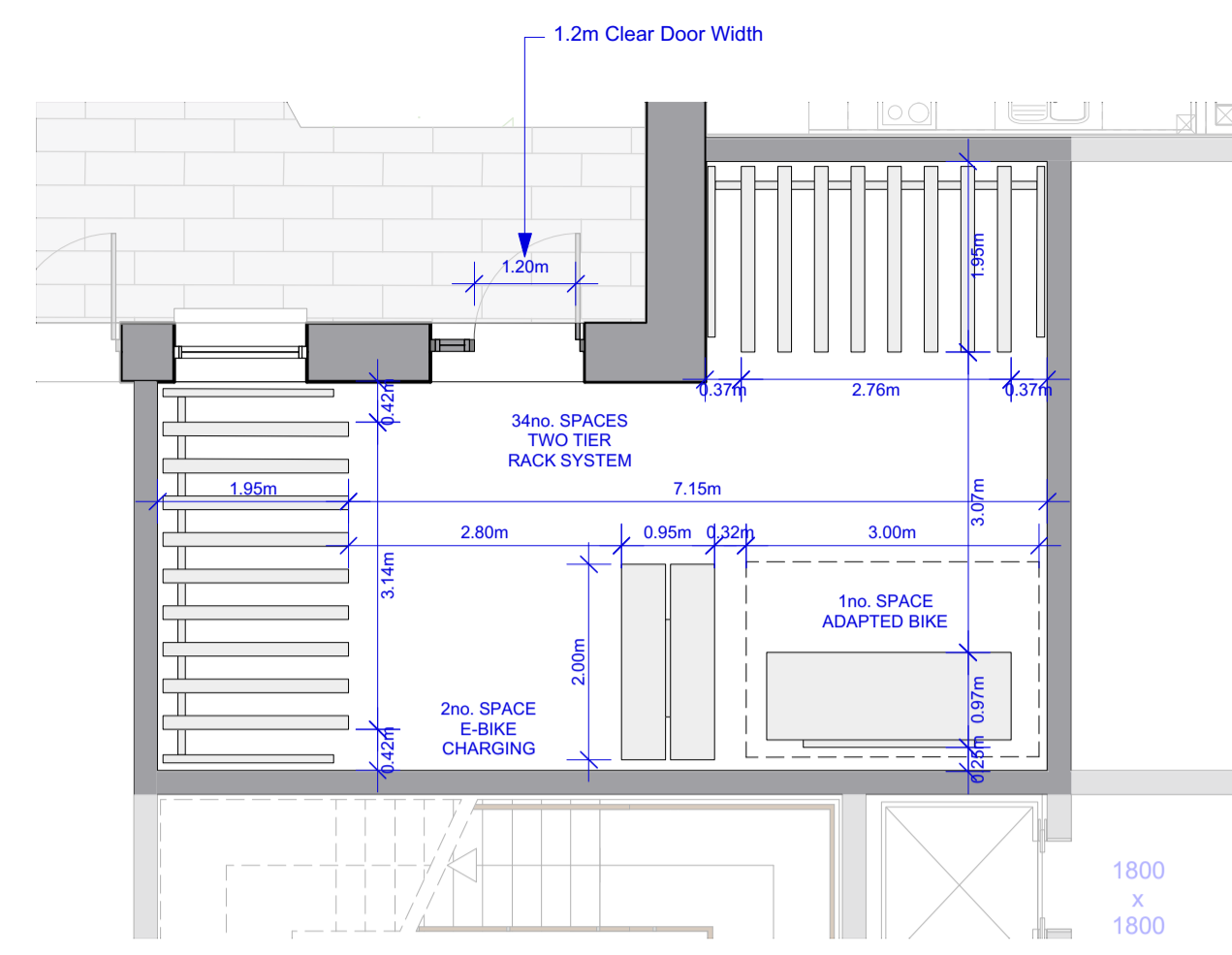
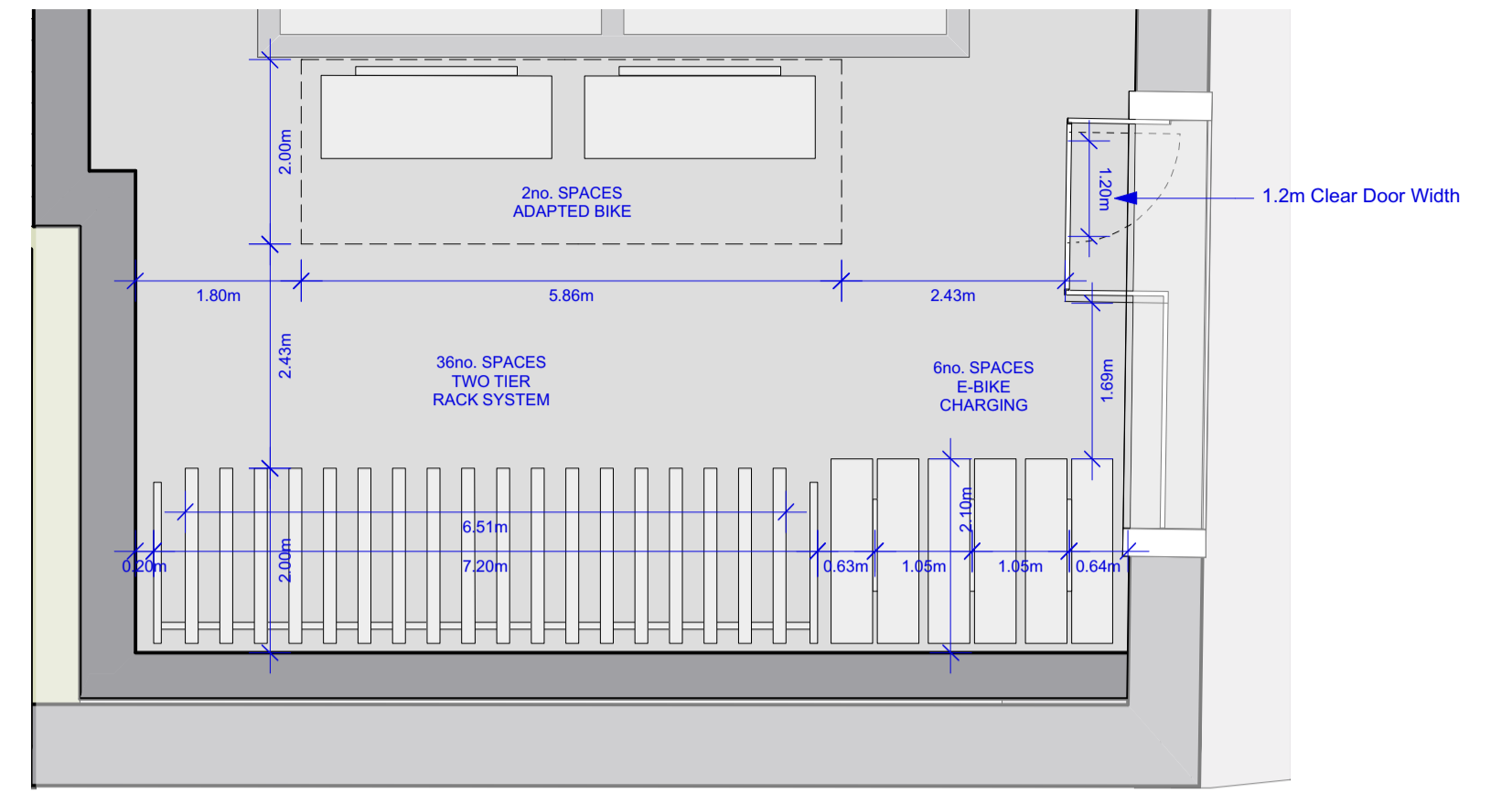
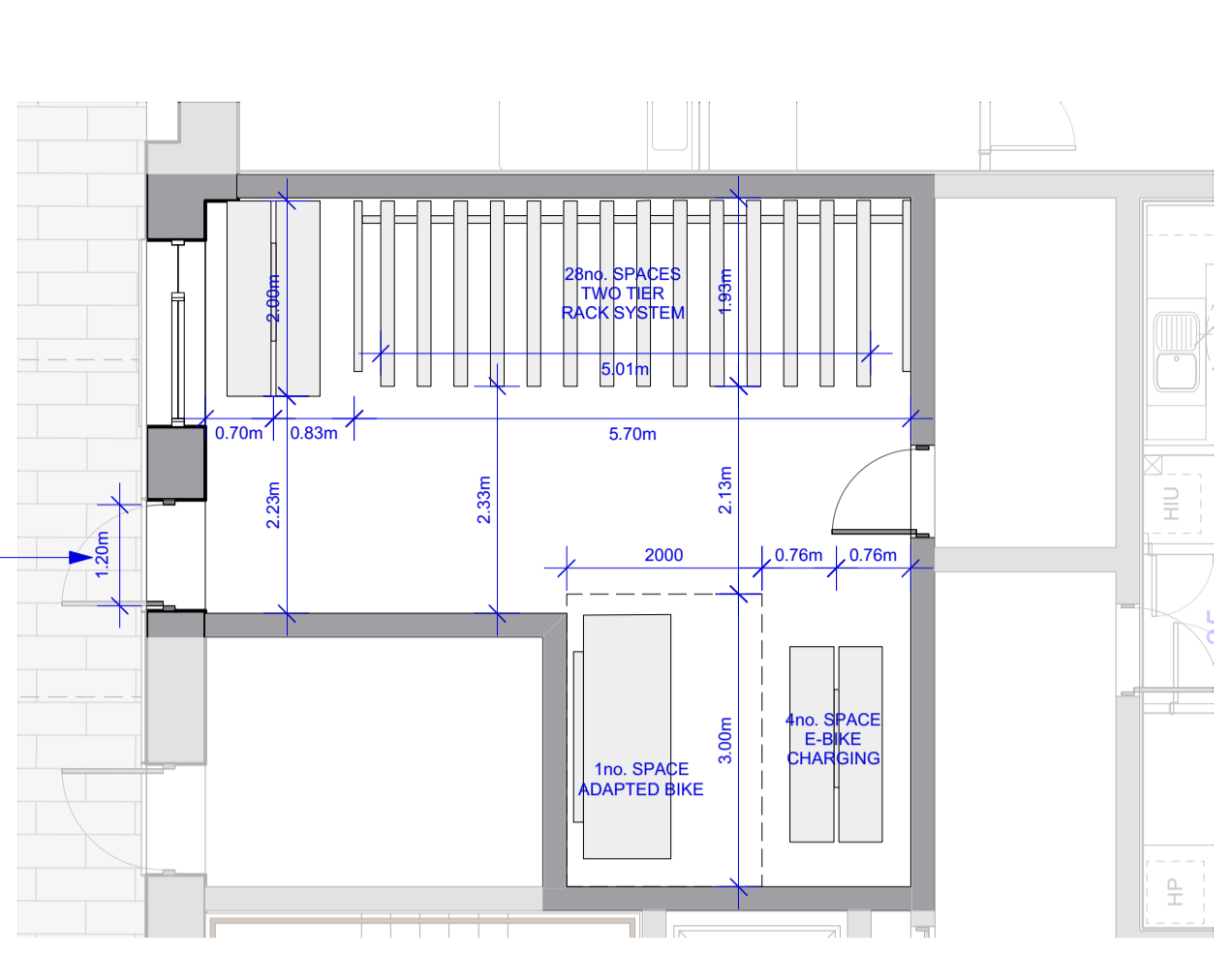


2 Cycle Store Layout - Total Number of Spaces 37
Scale: 1:75



3 Cycle Store Layout - Total Number of Spaces: 33
Scale: 1:75



4 Cycle Store Layout - Total Number of Spaces: 44
Scale: 1:75

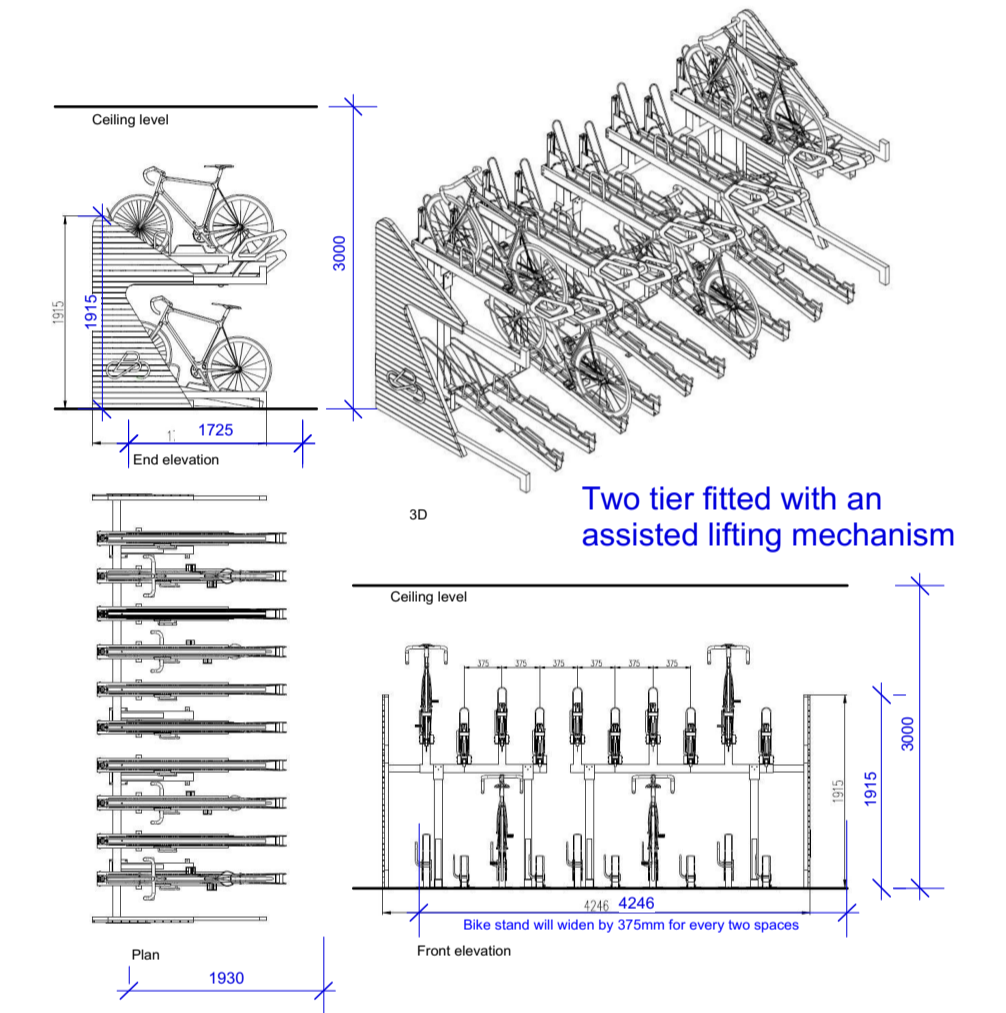
1 Cycle Store Layout - Total Number of Spaces: 62
Scale: 1:75



Proposed Site Plan - Cycle Infrastructure - Ground Floor
Scale: 1:350

Legend - Planning

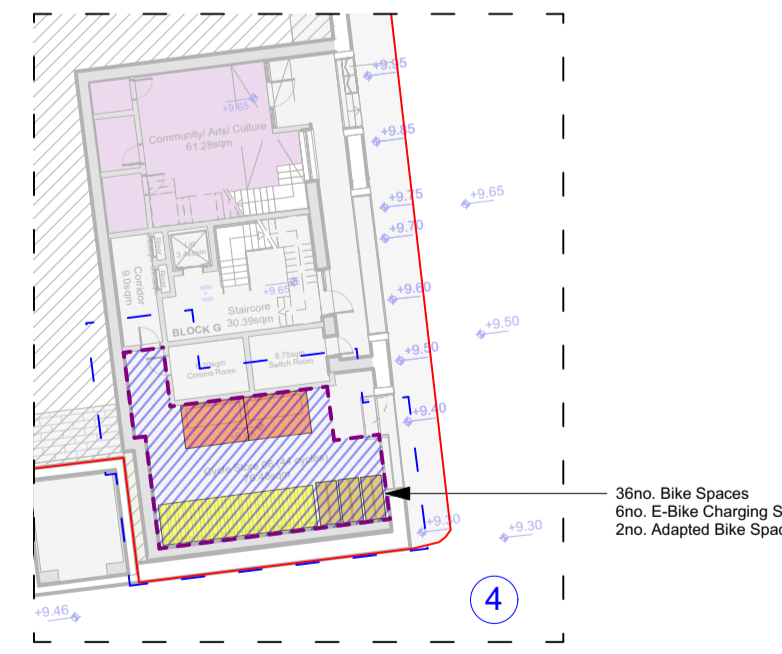
- Planning Application Extents
- North Point
- Long term - Residential Secure Parking
- Adapted Bike - Long term - Residential Parking
- Sheffield Stands/Double Stacked - Long term - Residential Parking
- Sheffield Stands - Long term - Creche and Community Parking
- E-Bike - Long term - Residential Parking
- Sheffield Stands - Short term - Visitor Parking
- Adapted bike - Short term - Visitor Parking
- Motorcycle - Short term - Visitor Parking



5 Sample Bike Storage Layout - Two Tier Rack System for 10 bikes
Scale: 1:75

Cycle Parking	Total Apts	Load	Long term Required	Short term Required	of which adapted req.	Long term Delivered	Short term Delivered	of which adapted del.
<i>For below, load based on number of bedrooms</i>								
1B2P Apartments (General)	92	92	92	46	5	94	47	4
2B Apartments (General)	57	114	114	29	6	116	29	4
3B5P Apartments (General)	18	54	54	9	3	56	10	6
<i>For below, load based on total area in m2</i>								
Community, Arts & Culture		552	2	6	0	2	8	2
Retail		0	0	0	0			
<i>For below, load based on total number of staff/children</i>								
Creche		278	2	5	1	2	7	1
Total numbers			264	94	14	270	101	17

Cycle Infrastructure - Block G -1 Floor
Scale: 1:350



Use Opened dimensions only. Do not scale drawings. Read in conjunction with specification and consultants drawings. Report any discrepancies in drawings to Architect before putting work in hand. Check all dimensions on site. This drawing is the copyright of Sean Harrington Architects, and may not be reproduced, in whole or part, without prior agreement.

SEÁN HARRINGTON ARCHITECTS

3rd Floor
121/22 Capel Street
Dublin 7, Ireland
t: 01 872 422
e: info@sha.ie

PROJECT: Social Housing Bundle 4, Development at the Stanley Street Depot, Dublin 7
CLIENT: Dublin City Council
DRAWING NO: SHB4-SSD-DR-SHA-AR-P3-0007

PROPOSED BIKE STORAGE / CYCLE INFRASTRUCTURE

REVISION: PLANNING	SCALE: 1:350	DATE: SEP 24	CHECKED BY: RG	REV: 001
--------------------	--------------	--------------	----------------	----------