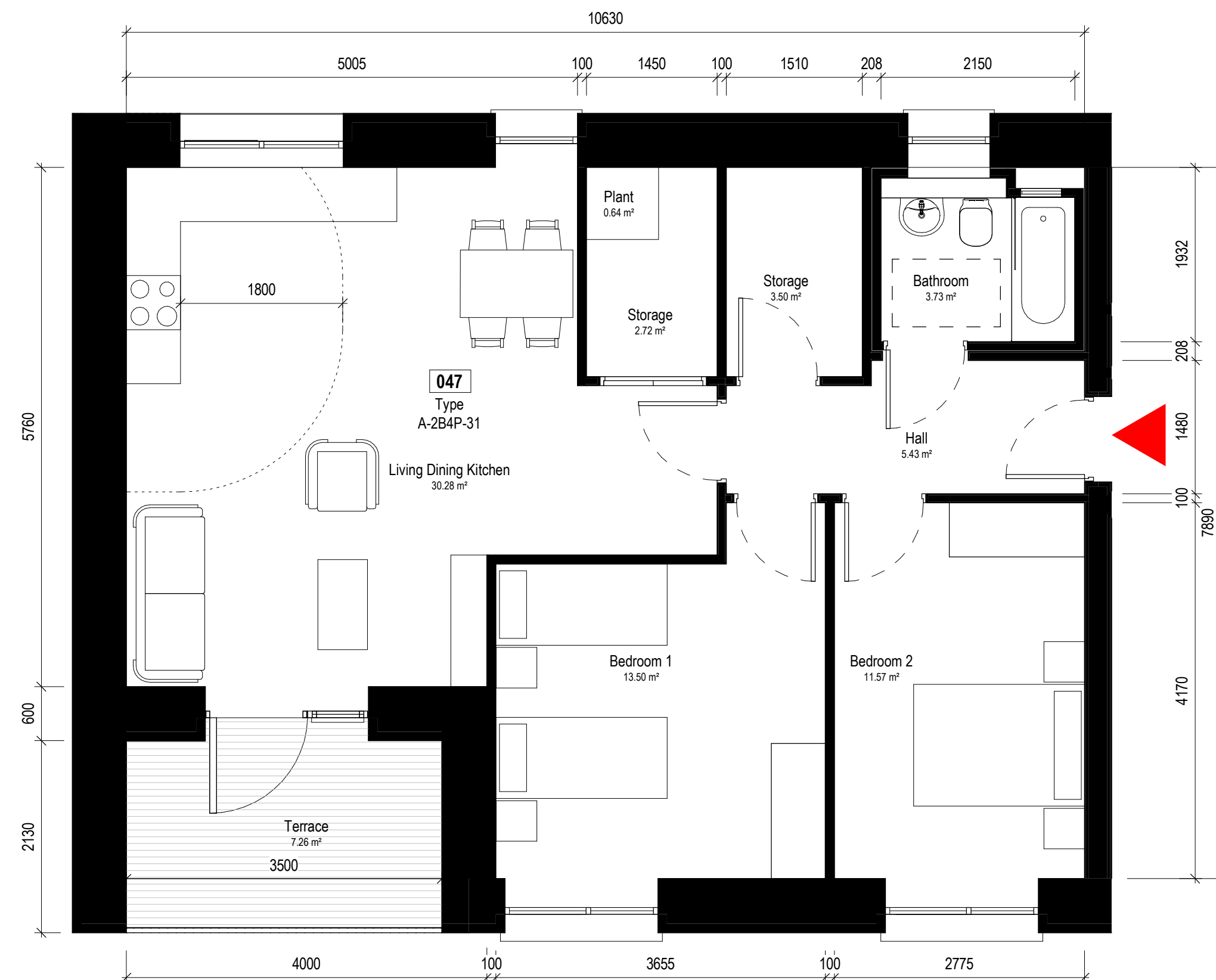


Room Schedule-Type A-2B4P-26		
Name	Min Area	Area
Bathroom		3.73 m ²
Bedroom 1	11.40 m ²	11.40 m ²
Bedroom 2	13.00 m ²	13.01 m ²
Hall		5.40 m ²
Living Dining Kitchen	30.00 m ²	30.02 m ²
Plant		0.77 m ²
Storage	6.00 m ²	6.00 m ²
Terrace	7.00 m ²	7.00 m ²
		77.31 m ²

1 Type A-2B4P-26
1:50



Room Schedule-Type A-2B4P-31		
Name	Target Area	Area
Bathroom		3.73 m ²
Bedroom 1	13.00 m ²	13.50 m ²
Bedroom 2	11.40 m ²	11.57 m ²
Hall		5.43 m ²
Living Dining Kitchen	30.00 m ²	30.28 m ²
Plant	0.00 m ²	0.64 m ²
Storage	6.00 m ²	6.23 m ²
Terrace	7.00 m ²	7.26 m ²
		78.64 m ²

2 Type A-2B4P-31
1:50

Notes:
Do not scale from this drawing.
Use figured dimensions only.
All errors and omissions to be reported to the Architect.
This drawing to be read in conjunction with relevant consultant's drawings.
All dimensions are in millimetres and all levels are in meters to match Datums unless otherwise noted.
Contractor Design Responsibility
It is noted that there are many elements within the works that require contractor design, and will be subject to certification as part of BCAR - see Preliminary Inspection Plan for clarity on certification required.
© This drawing or design may not be reproduced without permission.

Revisions:

1	Pre-Part 8 Submission	12-04-2024	GK
2	Part 8 Planning Submission	24-07-2024	GK
Rev	Description	Date	By

Project:
PPP SHB 4 - Croke Villas

Client:
National Development Finance Agency and Dublin City Council

Title:
Apartment Layouts 06

Drawing / Document Name:
Project Number Project Site Type Originator Role Status Sheet Number
2771 SHB4-CVD-DR-COA-AR-P3- 5767

Suitability Status : Purpose Code - Definition Revision:
P3 - For Planning 2

Scale @ A1 Drawn: Checked: Date:
1 : 50 Gizem Kabasakal Paul Lennon 24-07-2024

COADY
ARCHITECTS
Mt Pleasant Business Ctr, Ranelagh, Dublin 6, D06 X7P8
Unit 8A Cran Point, Main St, Crummore, Co. Galway
01 437 6766 | 091 788 925 | admin@coady.ie | www.coady.ie