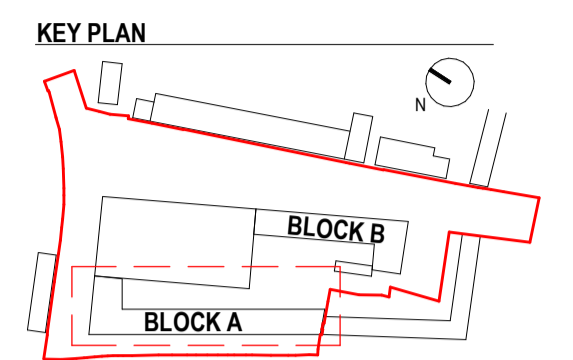


Notes:
 Do not scale from this drawing.
 Use figured dimensions only.
 All errors and omissions to be reported to the Architect.
 This drawing is to be read in conjunction with relevant consultant's drawings.
 All dimensions are in millimetres and all levels are in meters to match Datum unless otherwise noted.

Contractor Design Responsibility
 It is noted that there are many elements within the works that require contractor design, and will be subject to certification as part of BCAR - see Preliminary Inspection Plan for clarity on certification required.

© This drawing or design may not be reproduced without permission.



- A-2B4P-18 79.55 m²
 - A-2B4P-27 81.18 m²
 - A-2B4P-27 81.18 m²
 - A-2B4P-27 81.18 m²
 - A-2B4P-27 81.18 m²
 - A-2B4P-29 81.16 m²
- A-2B4P-18
 - A-2B4P-27
 - A-2B4P-29

1 Block A - Ground Floor Area Plan
 1:250



- A-2B4P-30 92.50 m²
 - A-2B4P-24 74.42 m²
 - A-2B4P-19 76.68 m²
 - A-2B4P-28 81.63 m²
 - A-2B4P-19 76.68 m²
 - A-2B4P-28 81.63 m²
 - A-2B4P-22 76.27 m²
- A-2B4P-19
 - A-2B4P-22
 - A-2B4P-24
 - A-2B4P-28
 - A-2B4P-30

4 Block A - Third Floor Area Plan
 1:250



- A-2B4P-30 92.50 m²
 - A-2B4P-32 73.83 m²
 - A-2B4P-19 76.68 m²
 - A-2B4P-28 81.63 m²
 - A-2B4P-19 76.68 m²
 - A-2B4P-28 81.63 m²
 - A-2B4P-22 76.27 m²
- A-2B4P-19
 - A-2B4P-22
 - A-2B4P-28
 - A-2B4P-30
 - A-2B4P-32

2 Block A - First Floor Area Plan
 1:250



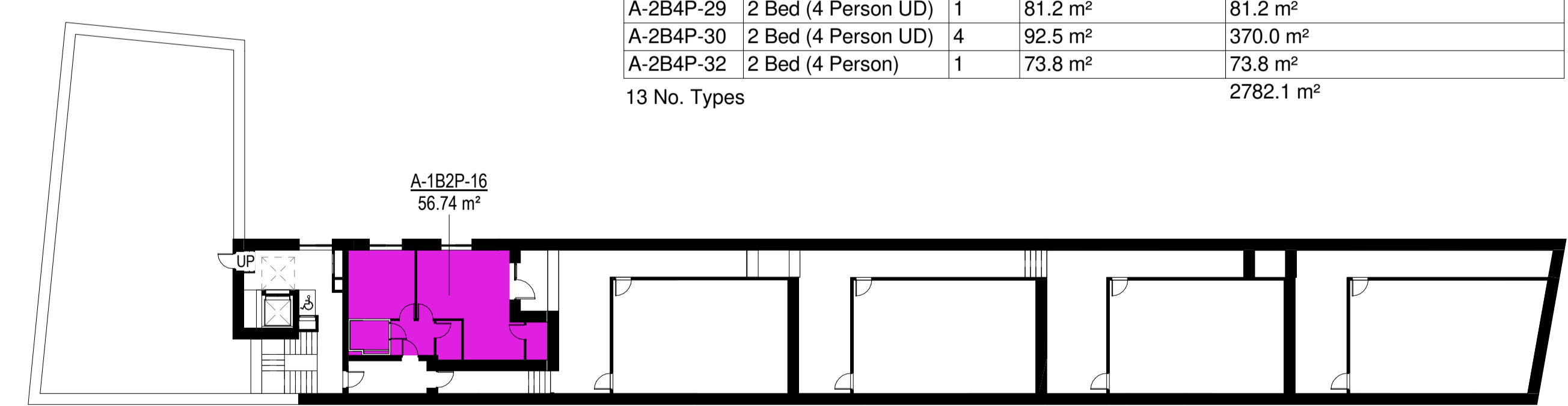
- A-2B4P-30 92.50 m²
 - A-2B4P-24 74.42 m²
 - A-2B4P-20 77.39 m²
 - A-2B4P-21 80.68 m²
 - A-2B4P-20 77.39 m²
 - A-2B4P-21 80.68 m²
 - A-2B4P-23 77.40 m²
- A-2B4P-20
 - A-2B4P-21
 - A-2B4P-23
 - A-2B4P-24
 - A-2B4P-30

5 Block A - Fourth Floor Area Plan
 1:250



- A-2B4P-30 92.50 m²
 - A-2B4P-24 74.42 m²
 - A-2B4P-20 77.39 m²
 - A-2B4P-21 80.68 m²
 - A-2B4P-20 77.39 m²
 - A-2B4P-21 80.68 m²
 - A-2B4P-23 77.40 m²
- A-2B4P-20
 - A-2B4P-21
 - A-2B4P-23
 - A-2B4P-24
 - A-2B4P-30

3 Block A - Second Floor Area Plan
 1:250



- A-1B2P-16 56.74 m²

6 Block A - Fifth Floor Area Plan
 1:250

Name	Description	Count	Gross Net Apt. Area	Total Development Net Apt. Area
A-1B2P-16	1 Bed (2 Person)	1	56.7 m ²	56.7 m ²
A-2B4P-18	2 Bed (4 Person)	1	79.6 m ²	79.6 m ²
A-2B4P-19	2 Bed (4 Person)	4	76.7 m ²	306.7 m ²
A-2B4P-20	2 Bed (4 Person)	4	77.4 m ²	309.6 m ²
A-2B4P-21	2 Bed (4 Person)	4	80.7 m ²	322.7 m ²
A-2B4P-22	2 Bed (4 Person)	2	76.3 m ²	152.5 m ²
A-2B4P-23	2 Bed (4 Person)	2	77.4 m ²	154.8 m ²
A-2B4P-24	2 Bed (4 Person)	3	74.4 m ²	223.3 m ²
A-2B4P-27	2 Bed (4 Person UD)	4	81.2 m ²	324.7 m ²
A-2B4P-28	2 Bed (4 Person UD)	4	81.6 m ²	326.5 m ²
A-2B4P-29	2 Bed (4 Person UD)	1	81.2 m ²	81.2 m ²
A-2B4P-30	2 Bed (4 Person UD)	4	92.5 m ²	370.0 m ²
A-2B4P-32	2 Bed (4 Person)	1	73.8 m ²	73.8 m ²
13 No. Types				2782.1 m ²

Level	Area
00_Ground Floor A	712.69 m ²
01_First Floor A	683.56 m ²
02_Second Floor A	686.10 m ²
03_Third Floor A	682.21 m ²
04_Fourth Floor A	685.67 m ²
05_Fifth Floor A	290.02 m ²
	3740.24 m ²

Revisions:

Rev	Description	Date	By
1	Pre-Part 8 Submission	12-04-2024	GK
2	Part 8 Planning Submission	24-07-2024	GK

Project:
 PPP SHB 4 - Croke Villas

Client:
 National Development Finance Agency and Dublin City Council

Title:
 Block A - Apartment Type Key Plans

Drawing / Document Name:
 Project Number: 2771 SHB4-CVD-DR-COA-AR-P3- 5760

Suitability Status: Purpose Code - Definition
 P3 - For Planning

Scale @ A1 Drawn: 1:250
 Checked: Gizem Kabasakal
 Date: 24-07-2024