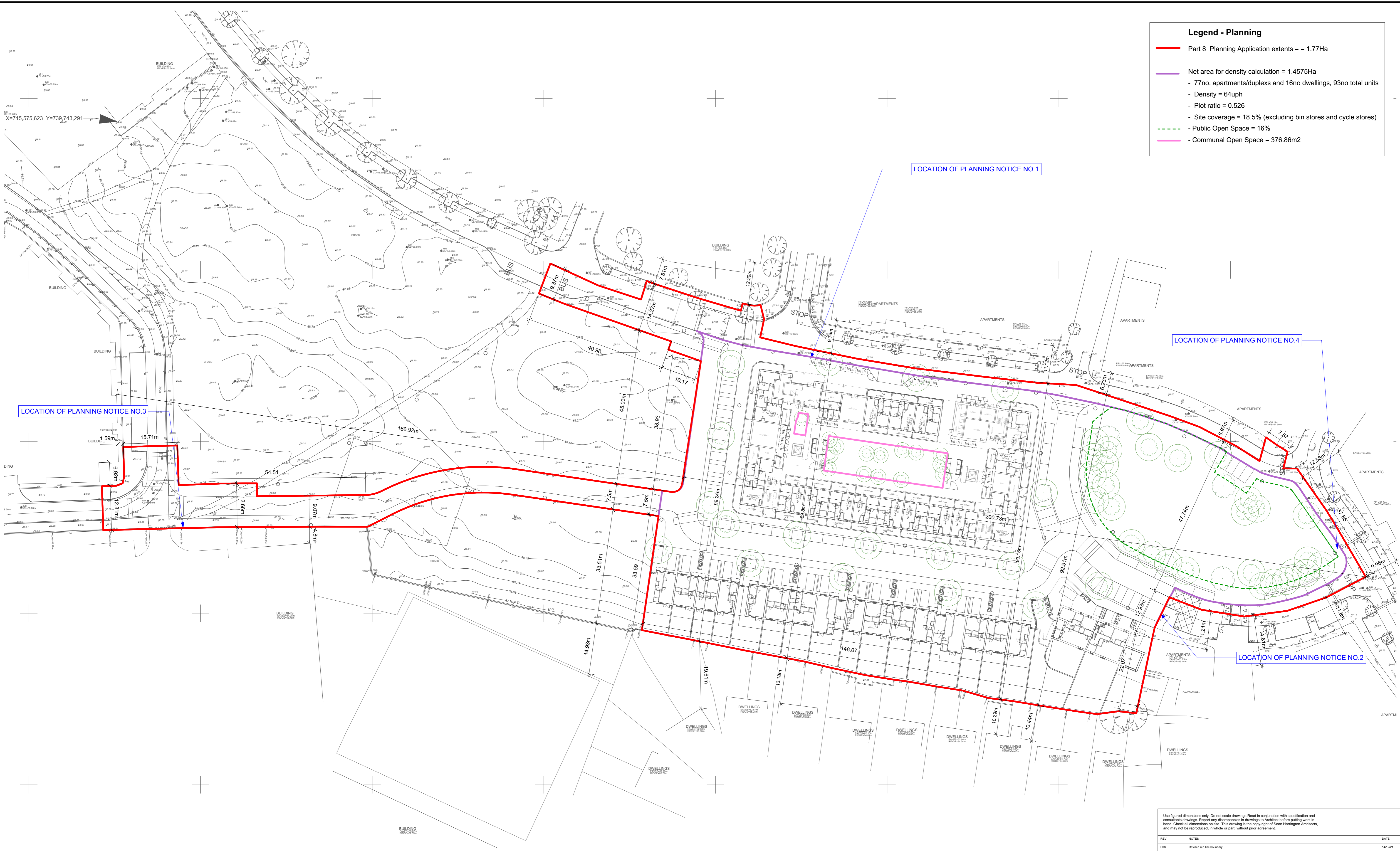


- Legend - Planning**
- Part 8 Planning Application extents = = 1.77Ha
 - Net area for density calculation = 1.4575Ha
 - 77no. apartments/duplexes and 16no dwellings, 93no total units
 - Density = 64uph
 - Plot ratio = 0.526
 - Site coverage = 18.5% (excluding bin stores and cycle stores)
 - - - Public Open Space = 16%
 - Communal Open Space = 376.86m²



1 Site Density Calculation
Scale: 1:500

Use figured dimensions only. Do not scale drawings. Read in conjunction with specification and consultants drawings. Report any discrepancies in drawings to Architect before putting work in hand. Check all dimensions on site. This drawing is the copyright of Sean Harrington Architects, and may not be reproduced, in whole or part, without prior agreement.

REV	NOTES	DATE
POB	Revised red line boundary	14/12/21
POB	Red line area added	04/01/22
PO	Planning Issue	03/03/22

SEÁN HARRINGTON ARCHITECTS
3rd Floor, 12/122 Capel Street, Dublin 1, Ireland. Tel: 01 8733 422, Email: info@sho.ie

PROJECT: Social Housing Bundle 3 - Residential Development Shangan Road, Ballymun
CLIENT: Dublin City Council
DRAWING TITLE: Site Density Calculation

PROJECT STAGE	SCALE	DATE	Project - Dwg - Var - Level - Type - Room - No.	REV NO.
Planning	As Shown	Aug '21	SHB3-BAL-AR-COA-DR-003	PO:
SITABILITY CODE: S2	DRAWN BY: AR	CHECKED BY: RG		

