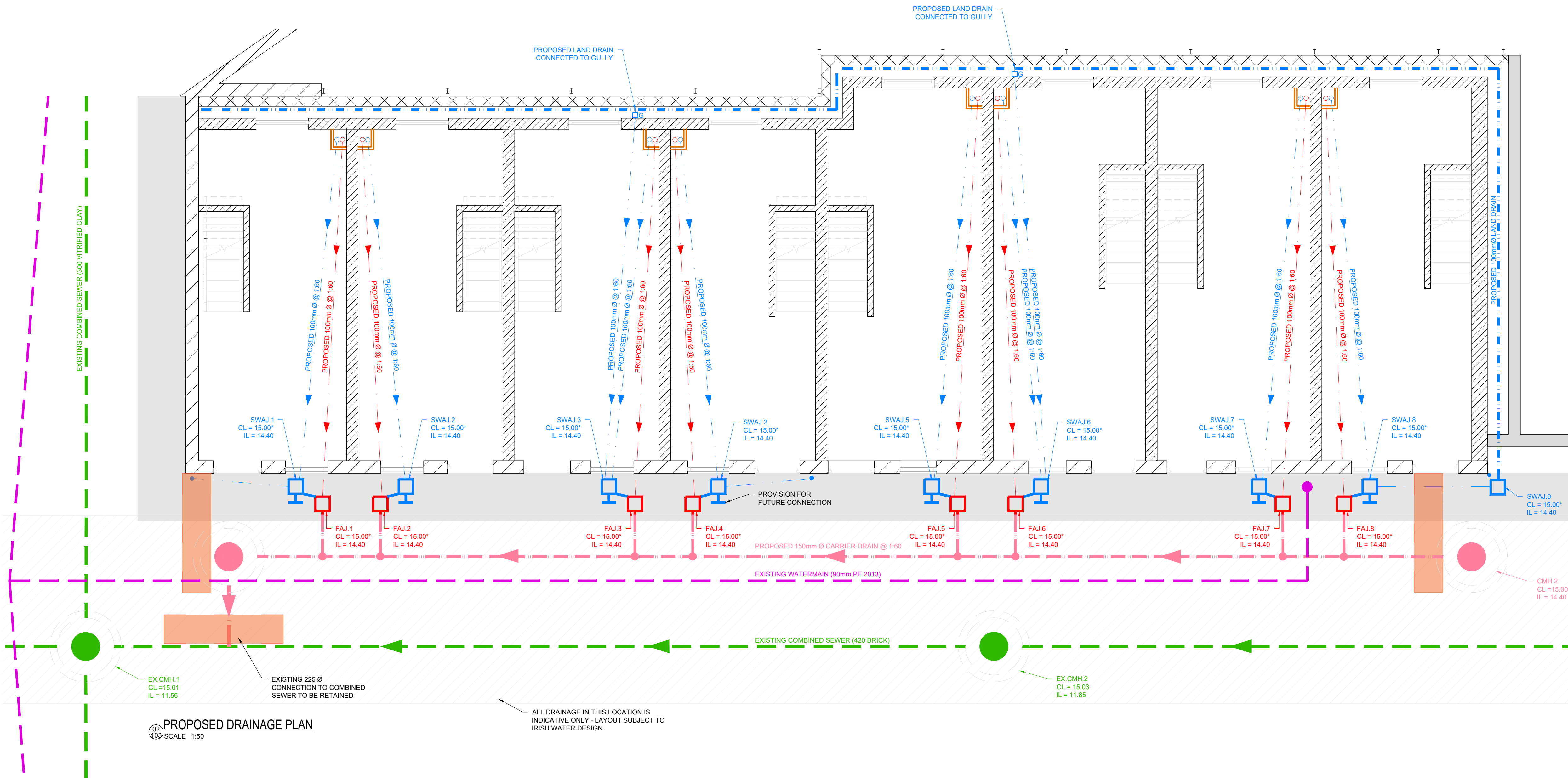


ORDNANCE SURVEY MAPS REPRODUCED UNDER LICENCE No. CYAL50173115.  
© ORDNANCE SURVEY IRELAND / GOVERNMENT OF IRELAND.

COPYRIGHT AND OWNERSHIP OF THIS DRAWING IS VESTED IN DRA CONSULTING ENGINEERS. NO PART OF THIS DOCUMENT MAY BE REPRODUCED OR TRANSMITTED IN ANY FORM OR STORED IN ANY RETRIEVAL SYSTEM OF ANY NATURE WITHOUT THE WRITTEN PERMISSION OF DRA CONSULTING ENGINEERS AS COPYRIGHT HOLDER EXCEPT AS AGREED FOR USE ON THE PROJECT FOR WHICH THE DOCUMENT WAS ORIGINALLY ISSUED. ©

ALL RIGHT RESERVED BY THE LAW OF COPYRIGHT AND BY INTERNATIONAL COPYRIGHT CONVENTIONS ARE RESERVED TO DRA CONSULTING ENGINEERS. ©

- NOTES:**
- ALL DIMENSIONS ARE IN MILLIMETRES AND LEVELS IN METRES UNLESS NOTED OTHERWISE.
  - USE FIGURED DIMENSIONS ONLY. DO NOT SCALE.
  - DRAWINGS TO BE READ IN CONJUNCTION WITH ALL RELEVANT ENGINEERS', ARCHITECTS' AND SERVICE ENGINEER'S DRAWINGS AND SPECIFICATIONS.
  - ALL WORKS TO BE CARRIED OUT IN ACCORDANCE WITH CURRENT BUILDING REGULATIONS.
  - ALL OF THE SITE DRAINAGE WORKS SHOULD BE CARRIED OUT IN ACCORDANCE WITH IRISH WATER'S (IW) "WASTEWATER INFRASTRUCTURE STANDARD DETAILS" AND "CODE OF PRACTICE FOR WASTEWATER INFRASTRUCTURE". REFER TO IRISH WATER DOCUMENT No. 1.W-CDS-5030-01 AND 1.W-CDS-5030-03.
  - FOR REINFORCED IN SITU ITEMS SUCH AS MANHOLES ETC. ALLOW H12 REBAR@200c/c BOTH FACES. NOTE THAT PRECAST OPTIONS ARE ALSO SPECIFIED.
  - ALL MANHOLE COVER LEVELS TO BE CHECKED IN SITU TO ENSURE THAT THEY ARE LEVEL WITH THE SURROUNDING FINISHED SURFACES.
  - PIPES UNDER ROADS WITH COVER LESS THAN 900mm ARE TO BE CONCRETE ENCASED.
  - PIPE MATERIALS:
  - SERVICE CONNECTIONS FROM DWELLINGS TO BE 100mm Ø UNPLASTICISED PVC IN ACCORDANCE WITH SECTION 3.13 OF IW CODE PRACTICE.
  - SITE SEWER TO BE THERMOPLASTIC STRUCTURED WALL PIPES IN ACCORDANCE WITH SECTION 3.13 OF THE IW CODE OF PRACTICE.
  - SITE SEWER AND MANHOLES TO BE TESTED IN ACCORDANCE WITH SECTION 4.10 OF IW CODE OF PRACTICE.
  - CCTV AND MANHOLE CONDITION SURVEYS TO BE CARRIED OUT IN ACCORDANCE WITH SECTION 1.9 OF IW CODE OF PRACTICE IN ADVANCE OF THE DEFECTS LIABILITY PERIOD.
  - IRISH WATER INSPECTIONS & AS-BUILTS:
  - CONTRACTOR TO ENSURE THAT IW FIELD ENGINEERS INSPECTS WORKS IN ACCORDANCE WITH QUALITY ASSURANCE (QA) FIELD INSPECTION REQUIREMENTS MANUAL.
  - CONTRACTOR TO ENSURE THAT AS CONSTRUCTED ELEMENTS ARE ADEQUATELY SURVEYED PRIOR TO COVERING UP TO ENSURE AS-BUILT DRAWINGS IN ACCORDANCE WITH QUALITY ASSURANCE (QA) FIELD INSPECTION REQUIREMENTS MANUAL CAN BE PRODUCED ON COMPLETION OF WORK.



A	ISSUED FOR TENDER	ER	BMG	AD	09/03/22
REV.	DESCRIPTION	PROD.	VERIF.	APPR.	DATE

**TENDER**

**DRA**  
CONSULTING ENGINEERS

NSAI

DUBLIN T: 01-216-2956 | LIMERICK 061-310-701 | WEXFORD 053-915-2814 | E: info@draconsulting.ie | W: www.draconsulting.ie

ARCHITECT: KENNETH HENNESSY ARCHITECTS

PROJECT: REFURBISHMENT OF NO. 1 TO 8 TYRELL PLACE, DUBLIN 1

TITLE: PROPOSED DRAINAGE PLAN

DATE:	29/10/2021	SCALE:	AS SHOWN @ A1
DESIGNER:	ER	DRG. No.	
PRODUCER:	ER		
VERIFIER:	BMG		
APPROVER:	AD		

21248-100

A