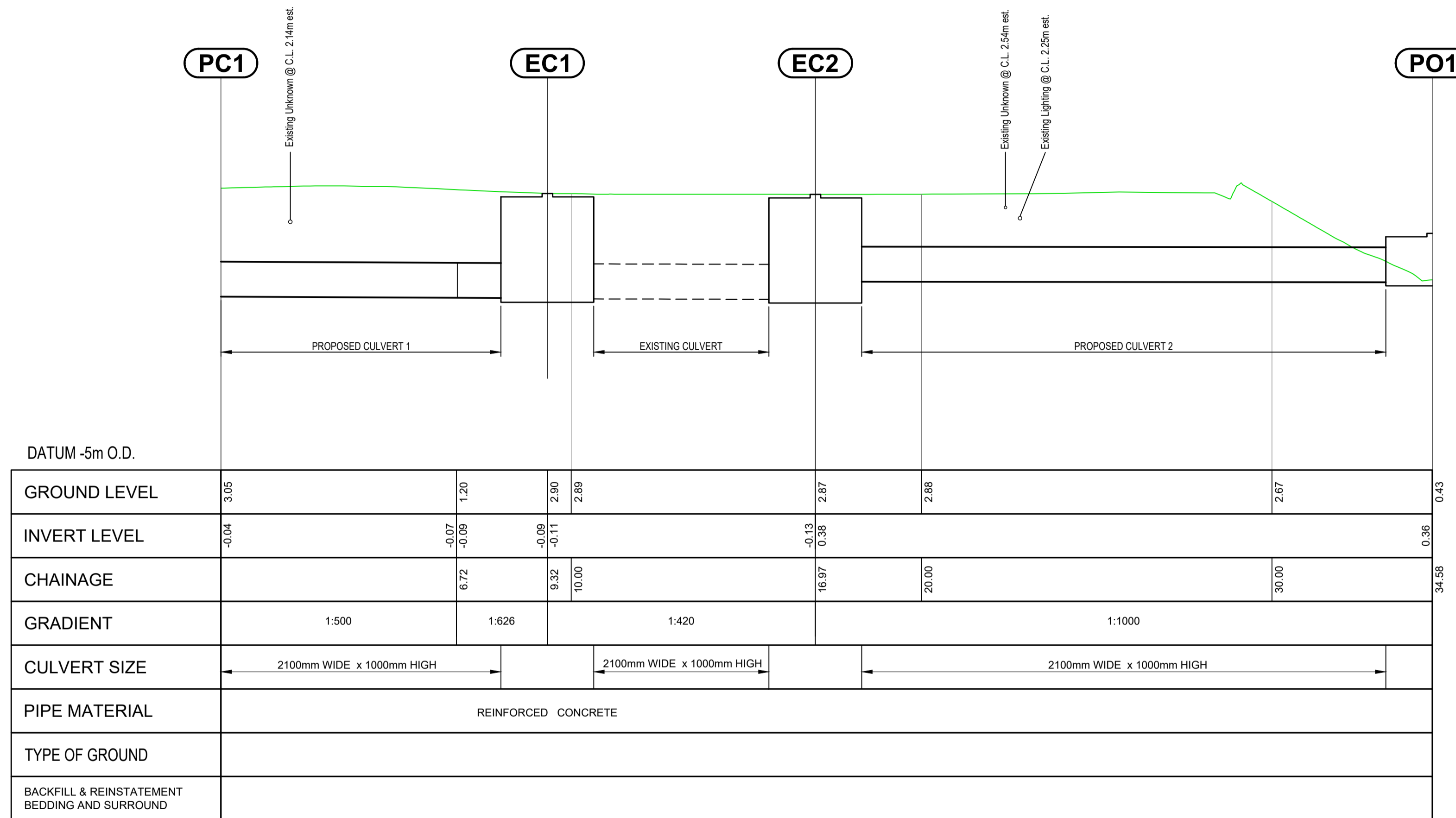
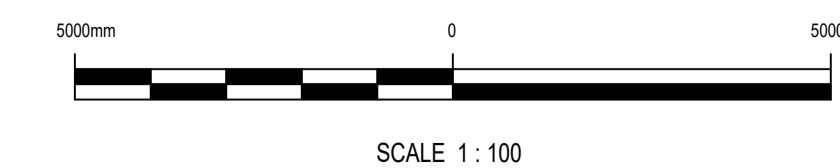


NOTE:
LEVELS SHOWN ARE INDICATIVE ONLY.



1 PROPOSED CULVERTS 1 & 2 - LONGITUDINAL SECTION
08007 Scale: 1:100



NOTES

REV	DATE	DESCRIPTION	D	C	A
P02	21.02.2022	PROJECT TITLE REVISED	K. Lim	J.H	B. D
P01	02.02.2022	FIRST ISSUE	K. Lim	J.H	B. D

PROJECT No.	STAGE
20834	PLANNING

COPYRIGHT RESERVED - THIS DRAWING IS NOT TO BE USED FOR A PURPOSE OTHER THAN THAT FOR WHICH IT HAS BEEN ISSUED BY NICHOLAS O'DWYER LTD. NOR IS IT TO BE COPIED OR REPRODUCED IN ANY MANNER WITHOUT WRITTEN CONSENT.

NICHOLAS O'DWYER
Unit E4, Nutgrove Office Park,
Nutgrove Avenue, Dublin 14
T +353 1 296 9000
F +353 1 296 9001
E dublin@nodwyer.com
W www.nodwyer.com

Dublin City Council
CIVIC OFFICES, WOOD QUAY
DUBLIN 8, D08 RF3F
T +353 1 222 2222
E customerservices@dublincity.ie
W www.dublincity.ie

PROJECT
MIDDLE WAD
FLOOD ALLEVIATION SCHEME
CONTRACT E

TITLE
PROPOSED CLONTARF OUTFALL
PROPOSED CULVERTS 1 & 2
LONGITUDINAL SECTION

SCALES @ A1	DRAWN	CHECKED	APPROVED
1:100	K. Lim	J. Hughes	B. Dunphy
	DATE	DATE	DATE
	02.02.2022	02.02.2022	02.02.2022

SUITABILITY CODE	SUITABILITY DESCRIPTION
S2	FOR INFORMATION

DRAWING No.	REVISION
20834-NOD-XX-XX-DR-C-08008	P02