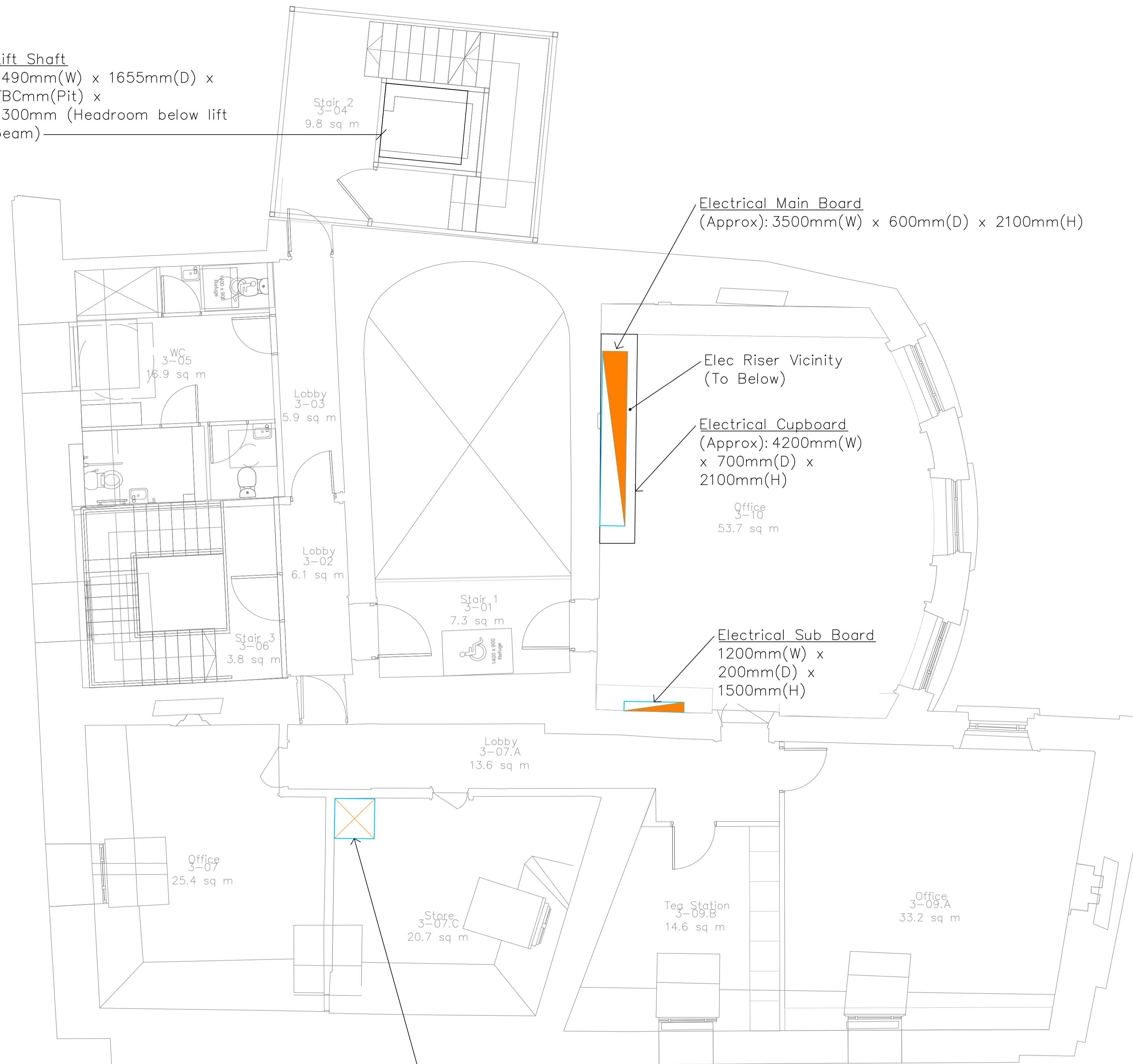


Lift Shaft  
 1490mm(W) x 1655mm(D) x  
 TBCmm(Pit) x  
 1300mm (Headroom below lift  
 beam)



Electrical Main Board  
 (Approx): 3500mm(W) x 600mm(D) x 2100mm(H)

Elec Riser Vicinity  
 (To Below)

Electrical Cupboard  
 (Approx): 4200mm(W) x  
 700mm(D) x  
 2100mm(H)

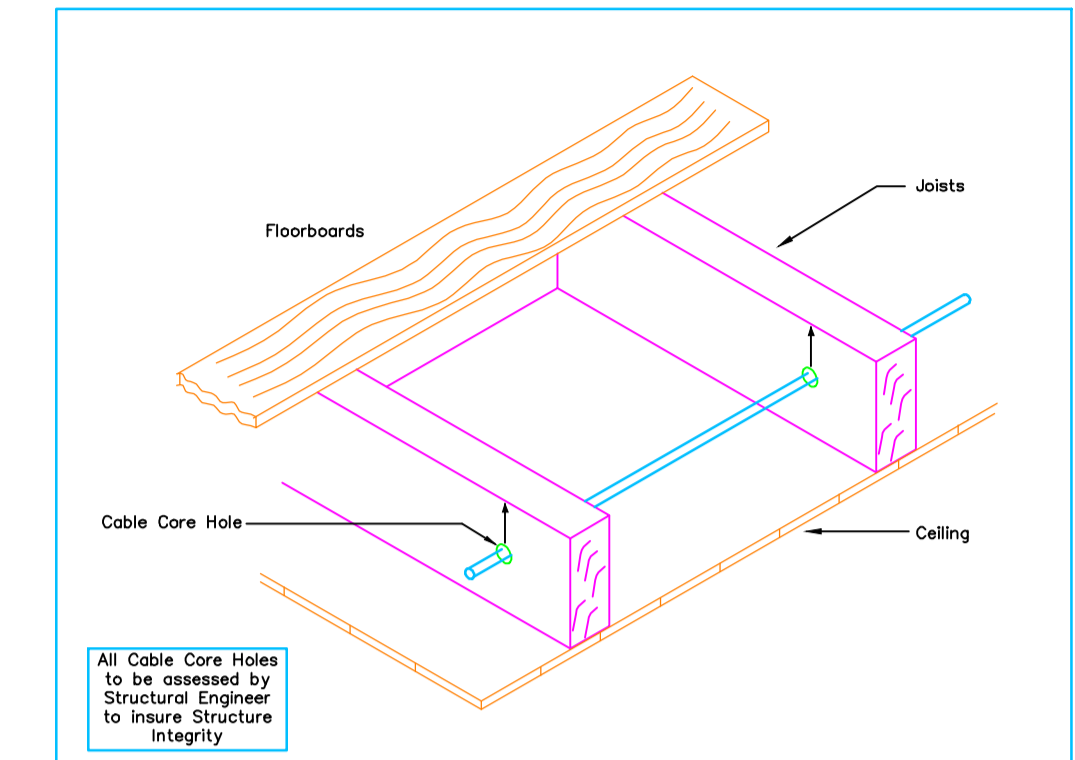
Office  
 3-10  
 53.7 sq m

Electrical Sub Board  
 1200mm(W) x  
 200mm(D) x  
 1500mm(H)

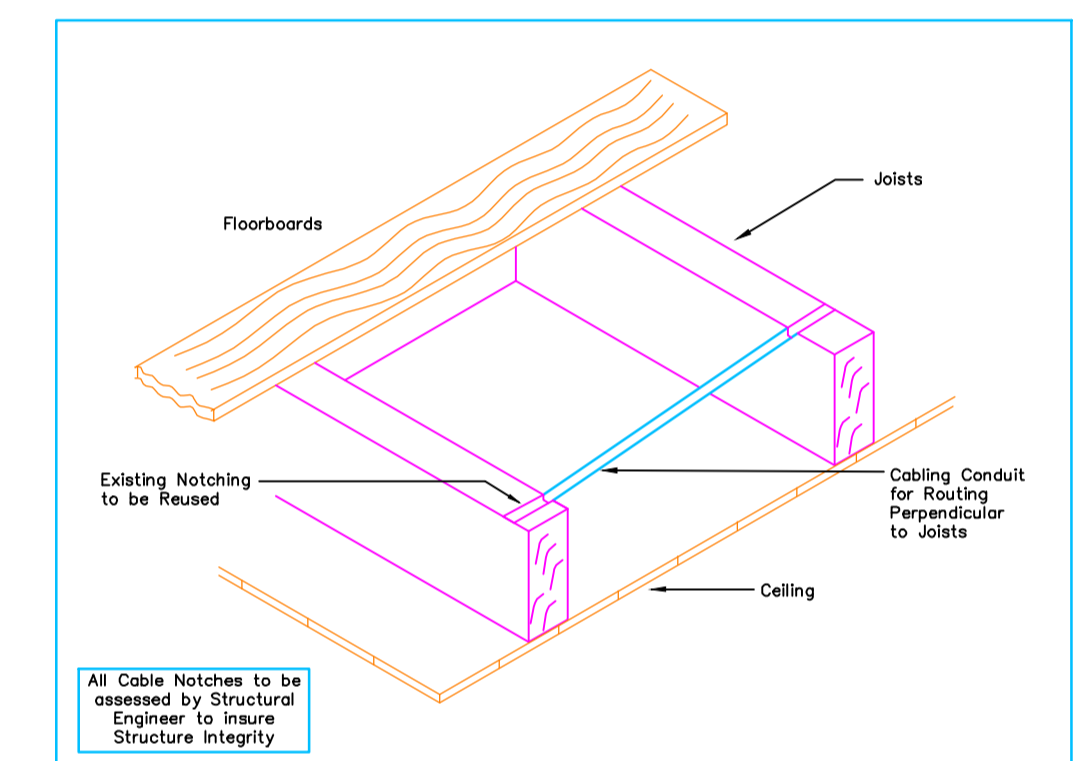
Comms Cabinet  
 (Floor Standing)  
 800mm (W) x  
 800mm (D) x  
 2000mm (H)

**Notes:**

- 1. Positions as shown, are indicative and subject to further review during detailed design stage.

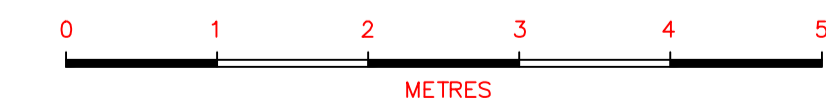


Detail A – Typical Cable Installation through Floor Joists by Coring



Detail B – Typical Cable Installation through Floor Joists by Notching

ISSUED FOR PLANNING



Revision	Issue: P–Preliminary T–Tender CN–Construction A–Approval I–Information	Date	Checked	Revision	Issue: P–Preliminary T–Tender CN–Construction A–Approval I–Information	Date	Checked

Issued for Planning. 15-02-2024 PL1 C.H.

HOMAN O'BRIEN

Engineering Excellence.

Consulting Engineers  
 89 Booterstown Avenue, Blackrock, Co. Dublin.  
 Telephone: 2056300, Fax: 2056301  
 E-mail: info@homanobrien.ie  
 Web: www.homanobrien.ie

Newcomen Bank.			
Electrical Services Installation Third Floor Level Schedule of Plant		Howley Hayes Architects. 19 Rock Hill, Blackrock, Co. Dublin.	
Drawing Number 2036-SK-E06	Date 25-02-2021	Scale Refer to Scalebar	Drawn J.S. Checked B.H. Issue PL1