

No part of this document may be re-produced or transmitted in any form or stored in any retrieval system of any nature without the written permission from Homan O'Brien Associates as copyright holder except as agreed for use on the project for which the document was originally issued. © Homan O'Brien Associates Copyright.

Notes:

1. Positions as shown, are indicative and subject to further review during detailed design stage.

Lift Shaft
1490mm(W) x 1655mm(D) x TBCmm(Pit)
x
1300mm (Headroom below lift beam)

Stair 2
1-03
8.2 sq m

Electrical Sub Board
1200mm(W) x
200mm(D) x
1500mm(H)

Service Riser
1-10
3.6 sq m

Elec Riser Vicinity
(To Above)

Multi-use room
1-02
45.2 sq m

Multi-use Room
1-08
42.2 sq m

Comms Cabinet
(Wall Mounted)
600mm (W) x
600mm (D) x
1270mm (H)

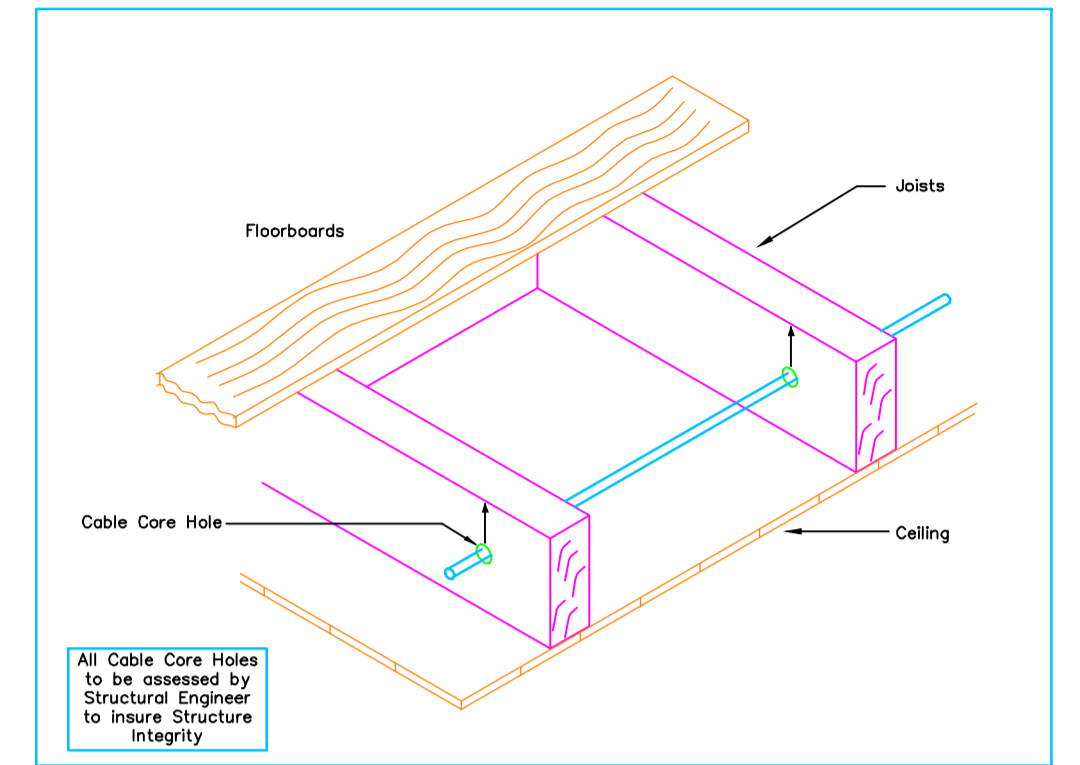
Stair 1
1-01
9.8 sq m

Lobby
1-09
4.6 sq m

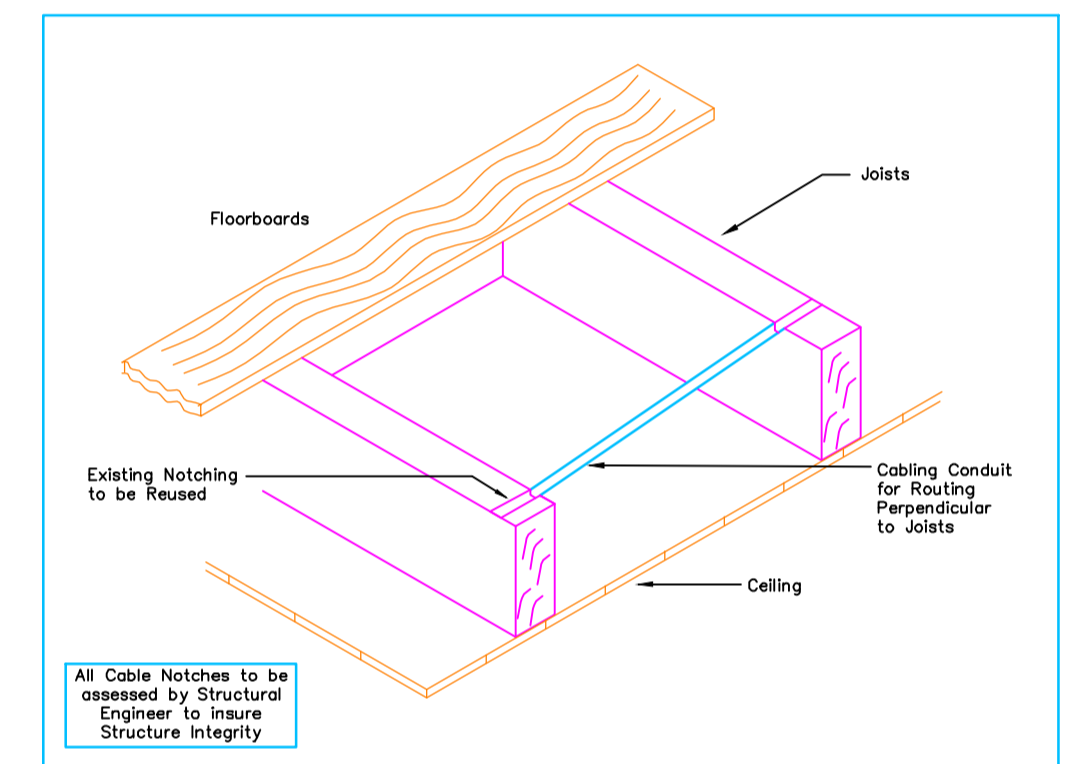
Multi-use room
1-06
53.4 sq m

Laser Fire Alarm
Detection Proposed
(To be Mounted
Below The Ceiling)

Multi-use Room
1-07
53.8 sq m



Detail A - Typical Cable Installation through Floor Joists by Coring



Detail B - Typical Cable Installation through Floor Joists by Notching



Revision	Issue: P-Preliminary T-Tender CN-Construction A-Approval I-Information	Date	Checked	Revision	Issue: P-Preliminary T-Tender CN-Construction A-Approval I-Information	Date	Checked

Issued for Planning. 15-02-2024 PL1 C.H.

HOMAN O'BRIEN Consulting Engineers
89 Booterstown Avenue, Blackrock, Co. Dublin.
Telephone: 2056300, Fax: 2056301
E-mail: info@homanobrien.ie
Web: www.homanobrien.ie

Newcomen Bank.

Electrical Services Installation
First Floor Level
Schedule of Plant

Howley Hayes Architects.
19 Rock Hill,
Blackrock,
Co. Dublin.

Drawing Number	Date	Scale	Drawn	Checked	Issue
2036-SK-E04	25-02-2021	Refer to Scalebar	J.S.	B.H.	PL1