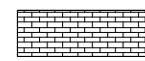
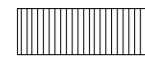
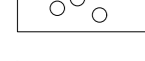





LEGEND AND SCHEDULE OF MATERIALS

-  PROPOSED BRICK PAVING TO ARCHITECT'S DETAIL
-  PROPOSED DECK
-  PROPOSED SEATING
-  PROPOSED INFORMAL BOULDERS
-  PROPOSED GROUNDCOVER AND HERBACEOUS PLANTING TYPE 1
-  PROPOSED TREE

SCHEDULE OF PROPOSED TREE PLANTING

TREE REF.	QUANTITY	SPECIES:
Al	2	<i>Amelanchier lamarckii</i> 3 xtr., wrb. 3m h., 2.5m spread, multistem, min. 3 stems
Ca	1	<i>Corylus avellana</i> 3 xtr., wrb., 3m h., 2m spread, multistem, min. 3 stems
Ps	2	<i>Pinus sylvestris</i> 5 xtr., wrb., 30-35cm g., 4-5m h., featured

GROUNDCOVER AND HERBACEOUS TYPE 1 MIX, TYPICALLY:

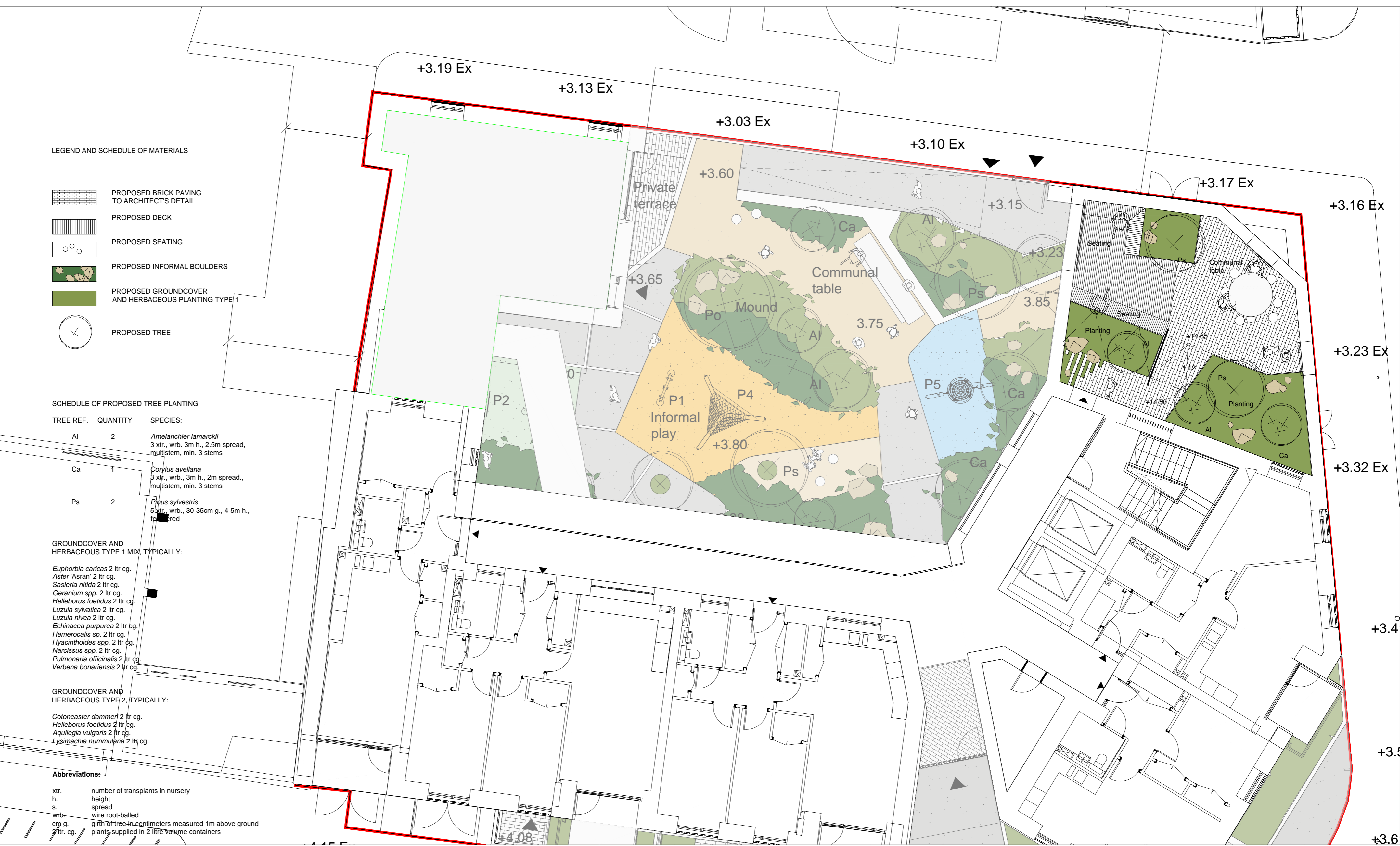
- Euphorbia caracas* 2 ltr cg.
- Aster 'Asran'* 2 ltr cg.
- Sasleria nitida* 2 ltr cg.
- Geranium spp.* 2 ltr cg.
- Helleborus foetidus* 2 ltr cg.
- Luzula sylvatica* 2 ltr cg.
- Luzula nivea* 2 ltr cg.
- Echinacea purpurea* 2 ltr cg.
- Hemerocallis sp.* 2 ltr cg.
- Hyacinthoides spp.* 2 ltr cg.
- Narcissus spp.* 2 ltr cg.
- Pulmonaria officinalis* 2 ltr cg.
- Verbena bonariensis* 2 ltr cg.

GROUNDCOVER AND HERBACEOUS TYPE 2, TYPICALLY:

- Cotoneaster dammeri* 2 ltr cg.
- Helleborus foetidus* 2 ltr cg.
- Aquilegia vulgaris* 2 ltr cg.
- Lysimachia nummularia* 2 ltr cg.

Abbreviations:

- xtr. number of transplants in nursery
- h. height
- s. spread
- wrb. wire root-balled
- cg. g. girth of tree in centimeters measured 1m above ground
- 2 ltr. cg. plants supplied in 2 litre volume containers



This drawing is the copyright of the Landscape Architect. Unless otherwise stated all dimensions are in millimetres. Where dimensions are not given, drawings must not be scaled and the matter must be referred to the Landscape Architect. If the drawing includes conflicting details/dimensions the matter must be referred to the Landscape Architect. All dimensions must be checked on site. The Landscape Architect must be informed, by the Contractor, of any discrepancies before work proceeds.

NOTES:

DATE	REV.	DESCRIPTION	DRAWN BY:	CHECKED BY:
30.05.2022	A	Drawing generally revised following architect's comment.	ks	sc
08.10.2022	B	Drawing generally revised following architect's comment.	ks	sc
07.09.2022	C	Drawing generally revised following architect's comment.	ks	sc
02.07.2024	D	Drawing generally revised following architect's comment.	ks	sc
05.07.2024	E	Roof terrace revised as per architect's comment.	ks	sc
12.09.2024	F	Drawing generally revised to match latest architectural layout.	ww	sc
13.09.2024	G	Drawing generally revised to match latest architectural layout.	ww	sc

**DERMOT FOLEY LANDSCAPE ARCHITECTS**  
MALPAS STREET BLACKPITTS D08 DD56 IRELAND T:+353 1 4541548 WWW.DERMOTFOLEY.COM

**CLIENT:** DUBLIN CITY COUNCIL  
**PROJECT:** VOLUMETRIC BUNDLE  
**DRAWING:** ROOF TERRACE PLAN - ST. ANDREWS COURT

**ISSUE STATUS:** PLANNING  
**DRAWING NO.:** SAC-DFL-SW-00-DR-L-200101  
**REVISION:** G

**PROJECT NO:** Dc41  
**SCALE:** 1:100  
**SHEET SIZE:** A2  
**DRAWN BY:** ks  
**CHECKED BY:** sc  
**1st ISSUE:** 24.05.2022

**NORTH**